

## 114CA-15

114CA-15

### Pillar tap

Square type with hot & cold indices. 1/2" BSP male inlet

[SANS 226 TYPE 1](#)



### Includes

- \* Pillar tap
- \* Flanged back nut

### Specific features and benefits

- \* With streamline outlet for flow aesthetics
- \* 1/2" heavy pattern low resistance for low pressure or high water demand installations

### Spare parts

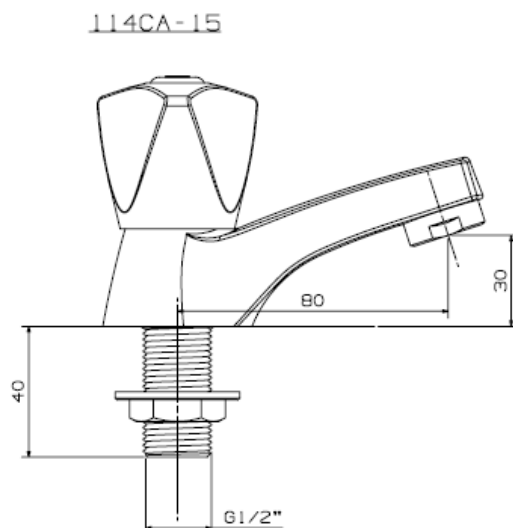
- \* Head part complete **P-81-2CA**
- \* Aerator **C-M24X1**
- \* Connection back nut **088-15**
- \* 1/2" heavy pattern tap washer **C-097-15**



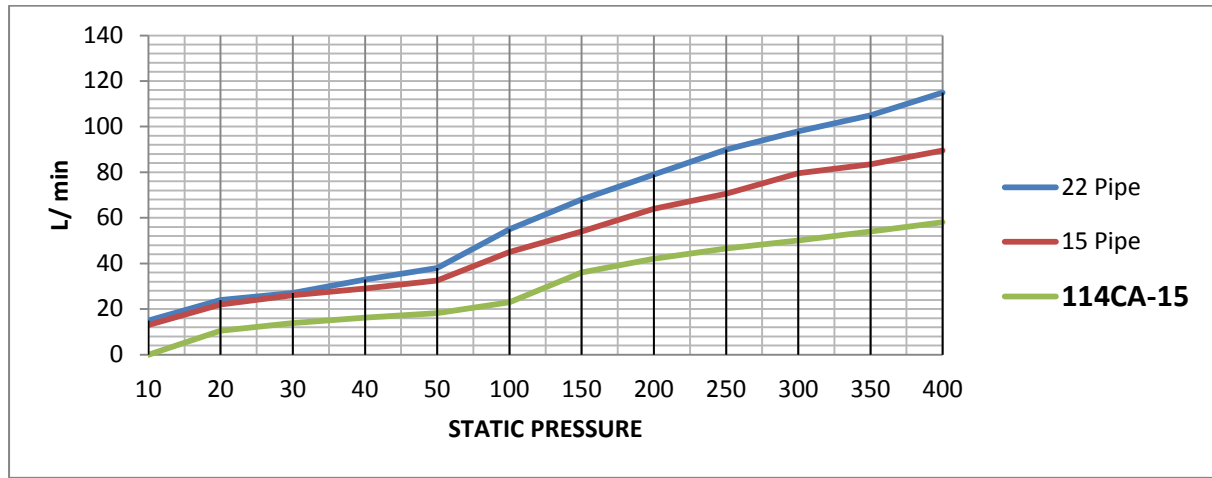
## Weight

700gr

## Line drawing



## Flow rates



### Note:

The Cobra R&D test facility (internal testing parameters) was tested with various static pressures. The following flow readings were taken.

- 1) With a Ø22mm x 1 meter long class "0" pipe with open end
- 2) With a Ø15mm x 1 meter long class "0" pipe with open end

## **SANS regulations**

SANS226: 2009 (Type1) (\*\* specific extracts from the applicable SANS specifications and regulations to which such products will have to adhere to, to bear the SABS approved mark)

### **Design:**

The "Class 1 tap" shall be designed to operate on a static water supply pressure of up to 2,000kPa.

### **Flow rates:**

**Table 1 — Flow rates for taps**

1	2	3	4	5
Class of tap	Dynamic supply pressure  kPa	Nominal size mm		
		15	20	25
		Flow rate L/m		
1	10 <sup>+1</sup> <sub>0</sub>	9	15	23
2	50 <sup>+5</sup> <sub>0</sub>	9	18	25
3	50 <sup>+5</sup> <sub>0</sub>	7-11	20-30	N/A
4	< 900	7-9	N/A	N/A

**Amdt 1**