



COBRA
A SOUTH AFRICAN ICON

JUNIOR FLUSHMASTER VALVE

Product code - FJ2.100

Junior flushvalve, exposed type, back entry

CERTIFIED



TECHNICAL FEATURES INCLUDE

7.5L - 8.5L per flushing cycle

65L per min total flow demand required

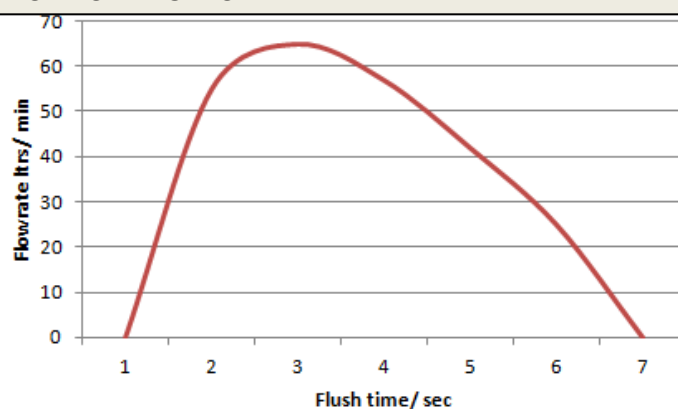
150KPa - 600KPa (min - max)

Chrome plated finish

DZR Brass

Integral vacuum breaker & Non hold open feature

TECHNICAL FLOW CHART

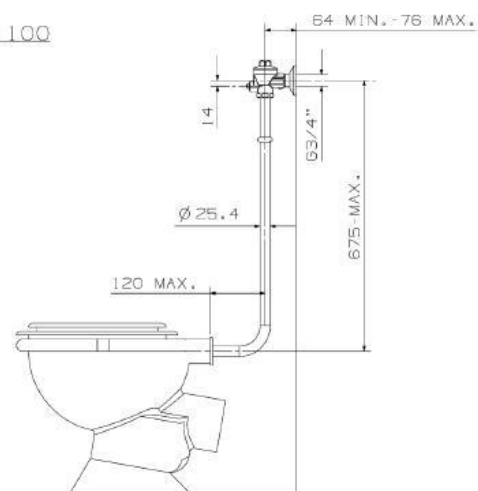


PRODUCT IMAGE



TECHNICAL DRAWING

FJ2.100



Download related documents dzt brass certificate- Sans 226 water taps. pdf certificate

www.cobra.co.za