



**COBRA**  
A SOUTH AFRICAN ICON

## METERING WALL MOUNTED TAP

Product code - KM066WT-114

Metering wall mounted tap with non hold open feature

## CERTIFIED



## TECHNICAL FEATURES INCLUDE

Flush cycle to be set to 10sec at 300KPa = 1L per flush

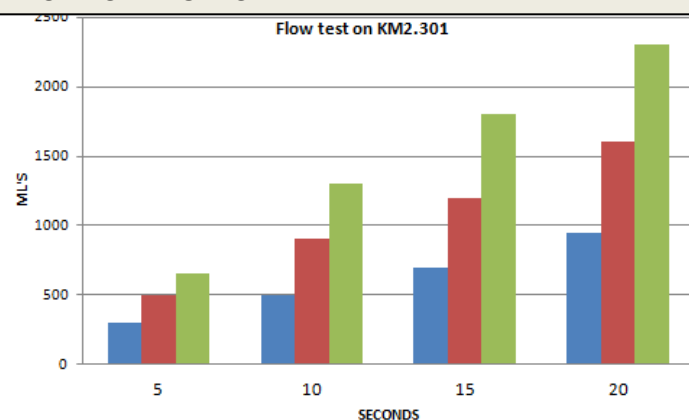
Min flow pressure 50KPa

Brushed Chrome plated finish

DZR Brass

Flow cycle setting 1-20sec

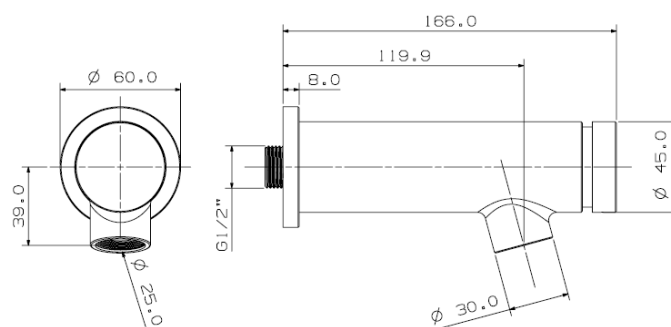
## TECHNICAL FLOW CHART



## PRODUCT IMAGE



## TECHNICAL DRAWING



Download related documents dzt brass certificate- Sans 226 water taps. pdf certificate

[www.cobra.co.za](http://www.cobra.co.za)