

Eva-tech ™

Designed for life.



EVA-LAST™
Composite Decking Solutions

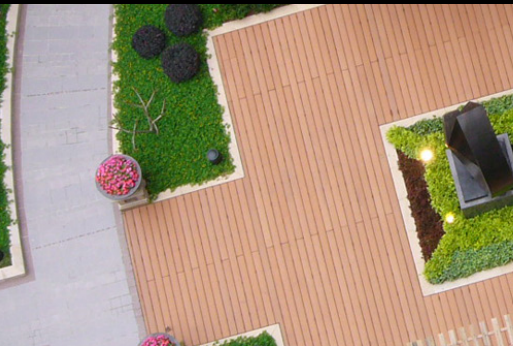
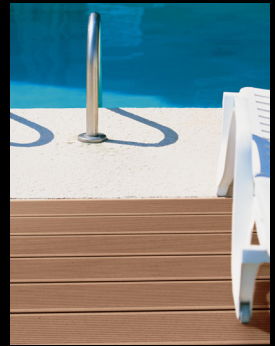


Eva-tech TM
Designed for life.

BEAUTIFUL, PRACTICAL & AFFORDABLE!

The Eva-Tech Range of Wood Plastic Composite Decking holds a unique combination of strikingly attractive looks and lifelong durability making it the perfect complement for any style of architecture in any environment. The resilient composition of the material will ensure very low maintenance. It will not require costly treating, sealing, sanding or eventual replacement, saving vast amounts of time and money throughout the life of the deck.

The material is composed of 60% reclaimed wood fibre and 40% recycled commercial polymers and industrial grade additives. Eva-Tech is proud to carry the approved 'green' product emblem of the Green Building Council of South Africa.



*South Africa's leading supplier of
WPC decking, balustrades and
structural accessories*

The decking system utilizes a unique hidden fastening system engineered into the boards, eradicating unwanted screws from the surface of the deck and creating a flawless barefoot friendly surface.

Offered in an array of colours, dimensions, styles and finishes, the Eva-Tech range makes it simple for homeowners, architects and contractors, no matter what their requirements, to find the perfect finish.



WHY CHOOSE COMPOSITE?

- ≡ Maintenance Free
- ≡ Environmentally Friendly
- ≡ Highly Moisture Resistant
- ≡ Barefoot Friendly
- ≡ Slip Resistant
- ≡ Will not Rot, Warp, Crack or Splinter
- ≡ UV Resistant
- ≡ Simple Installation (DIY)



Eva-tech  TM
Designed for life.



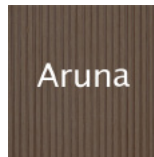
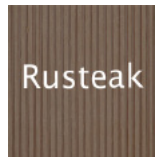
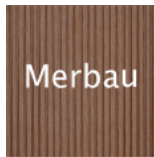
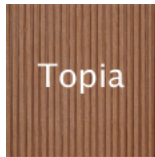
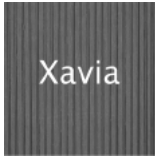
There is no better way to finish off your deck or patio than with a neat and tidy balustrade or pergola system.

The Eva-Tech range of WPC balustrades and pergolas are available in the same colour options as the decking boards and a number of classical styles and finishes.

Eva-Last proudly boast the widest selection of composite profiles and accessories available in Africa, all under one roof. With unrivalled knowledge of the industry, Eva-Last confidently offer clients the highest quality materials along with expert advice.

Increase your living space and add endless value to your home by stepping up to the most attractive and resilient outdoor designer products on offer today. Choose Eva-Tech, designed for LIFE.

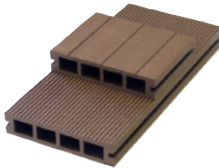
Colour Options



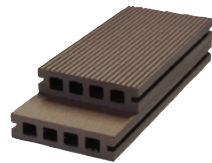
Profile Options



Dimensions: 25 x 150mm
Std Length: 5.8m or 2.9m
Weight: 2.85 kg/Lm



Dimensions: 31 x 146mm
Std Length: 5.8m or 2.9m
Weight: 3.45 kg/Lm



Dimensions: 25 x 100mm
Std Length: 5.8m or 2.9m
Weight: 2.26 kg/Lm



It's that Simple.

