

SECURITY PRODUCTS

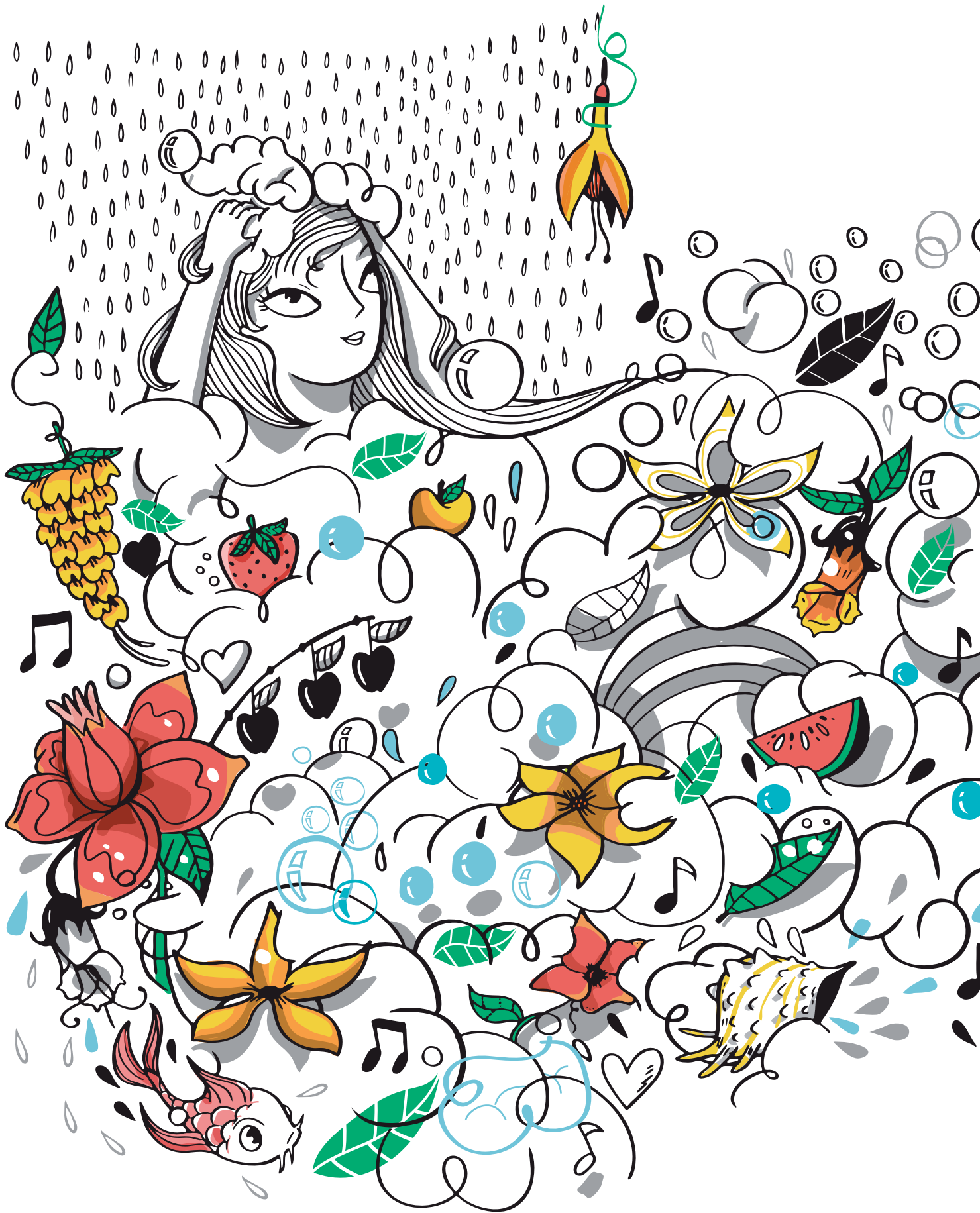
Product Guide



*Make
it
Wonderful*

FRANKE

Water Conservation and Quality Assurance





FRANKE WC PANS ARE DESIGNED TO REDUCE WATER CONSUMPTION BY UP TO 60%

WC Pans consume up to 90 percent of water usage in commercial buildings. Franke's range of WC Pans incorporates technology to reduce water consumption by up to 60%, offering high performance while saving water. Designed for ultimate hygiene solutions and ease of installation in public ablutions, the range caters for a wide variety of applications, from recreational facilities, shopping centres, petrol stations, airports and stadiums.

Product features:

- Hygienic
- Excellent low water consumption
- Aesthetically pleasing design, with satin finish
- Pressed bowl and P-trap, with minimal welding through robotic welding technology
- Full flush of 6 litres
- Sturdy design and safety compliant with low maintenance compared with ceramic and composite materials

Index



WC Pans & Urinals

04-10

Water Conservation & Quality Assurance	01-02
HDTX592 - Heavy Duty Wall Hung Pan	04
HDTX594 - Heavy Duty Wall Hung Pan for Disabled	05
HDTX597 Wall & Floor Mounted Shrouded Pan	06
HDTX850 Combi Unit (Bolt Fixing Type)	07
Security Frame for HDTX850 Combi Unit	08
HDTX860 Heavy Duty Combi Unit (Push-Fit/ Bracket Fixing Type)	09
HDTX538 Wall Hung Urinal	10
SBE Barron Bowl Urinal (Security Type)	10

SAPS Approved Products

11

SAPSDF Combination Wash Hand Basin & Drinking Fountain	11
SAPX597 Maximum Security WC Pan	11

Prison Approved Products

12

Recessed Type Toilet Roll Holder	12
SIRX001HD Single Wash Trough	12

Heavy Duty Wash Hand Basins

13

HDS Heavy Duty Surround Wash Hand Basin - Security Type	13
HDSSB Heavy Duty Surround Wash Hand Basin - Security Type	13
HDWHB Heavy Duty Wash Hand Basin- Security Type	14
HDSWHB Heavy Duty Surround Wash Hand Basin	14



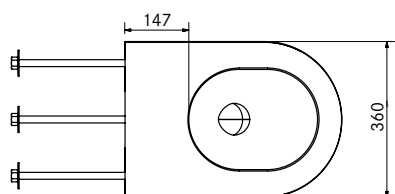
IMAGE	TYPE / MODEL	DIMENSIONS (L X D X H)	INLET	PRODUCT CODE
-------	--------------	------------------------	-------	--------------



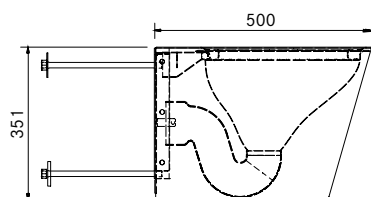
HDTX592 Heavy Duty Wall Hung Pan

Franke Model HDTX592 Stainless Steel wall hung WC pan. Manufactured from Grade 304 (18/10) Stainless Steel, 360x500x351mm. Pan to be manufactured with a shroud with corner mounting gussets and 10mm nuts and to be supplied with galvanised mild steel threaded rods for securing the pan through the wall. WC pan to flush with 4 and 6 litres of water. Pan to withstand point load of 400kg as per international standards.

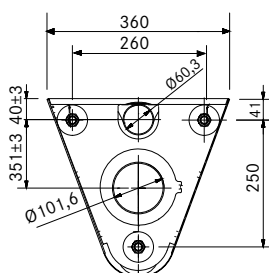
- Grade 304 (18/10) polished Stainless Steel
- Hygienic and vandal resistant
- Pressed components to ensure consistent quality and performance
- 4 or 6 litres flushing
- Heavy duty outer casing conceals the plumbing
- The WC pan is fixed to the wall bracket with galvanised mild steel threaded rods
- Wall hung pans are designed to accommodate:
 - Back entry inlet to suit 38mm flush valve connection or 41mm cistern flush pipe
 - Also designed to suit concealed flushing system



TOP VIEW



SIDE VIEW



BACK VIEW

HDTX592 360x500x351mm Back Entry **2540084-004**

WC Pans

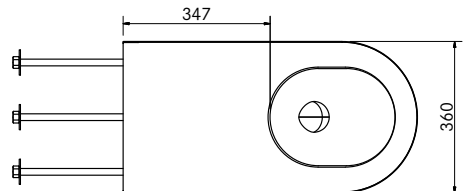
IMAGE	TYPE / MODEL	DIMENSIONS (L X D X H)	INLET	PRODUCT CODE
-------	--------------	------------------------	-------	--------------



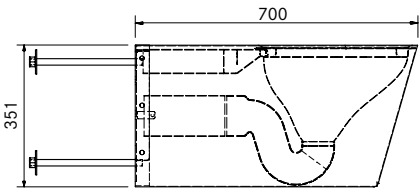
HDTX594 Heavy Duty Wall Hung Pan for DISABLED

Franke Model HDTX594 Stainless Steel wall hung WC pan. Manufactured from Grade 304 (18/10) Stainless Steel, 360x700x351mm. Pan to be manufactured with a shroud with corner mounting gussets, and 10mm nuts and to be supplied with galvanised mild steel threaded rods for securing the pan through the wall. WC pan to flush with 4 and 6 litres of water. Pan to withstand point load of 400kg as per international standards.

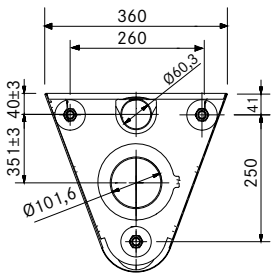
- Grade 304 (18/10) polished Stainless Steel
- Hygienic and vandal resistant
- Pressed components to ensure consistent quality and performance
- 4 or 6 litres flushing
- Heavy duty outer casing conceals the plumbing
- The WC pan is fixed to the wall bracket with galvanised mild steel threaded rods
- Wall hung pans are designed to accommodate:
- Back entry inlet to suit 38mm flush valve connection or 41mm cistern flush pipe
- Also designed to suit concealed flushing system



TOP VIEW



SIDE VIEW



BACK VIEW

HDTX594	360x700x351mm	Back Entry	2540086
----------------	---------------	------------	----------------

IMAGE

TYPE / MODEL

DESCRIPTION

PRODUCT CODE

HDTX597 Wall and Floor Mounted Shrouded WC Pan

Franke Model HDTX597 Heavy Duty Wall and Floor Mounted WC Pan 360x500x400mm high. Unit to be manufactured from Grade 304 (18/10) Stainless Steel 1,2mm gauge. Unit to be manufactured with a pressed flushing rim and integral “P” Trap with a 102mm outlet pipe and a 60mm back entry inlet pipe to suit a rubber flush inlet sealing bung. Pan to be manufactured with a shroud, with internal or external flanges...(please specify) for securing the pan through the wall and into floor with anchor bolts. (Bolts elsewhere measured). WC pan to flush with 4 and 6 litres of water. Pan to withstand point load of 400kg as per international standards.

Optional Extra:
Inlet and outlet pipes extended to 250mm.

- Grade 304 (18/10) Stainless Steel 1.2mm gauge
- Hygienic and vandal resistant
- Pressed components to ensure consistent quality and performance
- 4 or 6 litres flushing
- Heavy duty outer casing conceals the plumbing
- Pressed flushing rim
- Provision for secured fixing through wall and into floor
- Optional provision for seat or wooden slats
- Optional outlet and flush inlet pipes are available, which can be shortened/lengthened to suit plumbing

HDTX 597	with external flanges (wall and floor)	2540161
HDTX 597	with external flanges with 250 mm long extended pipes	2540162
HDTX 597	with internal flanges (wall and floor)	2540166
HDTX 597	with internal flanges with 250 mm long extended pipes	2540167


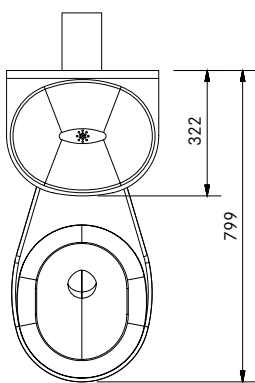
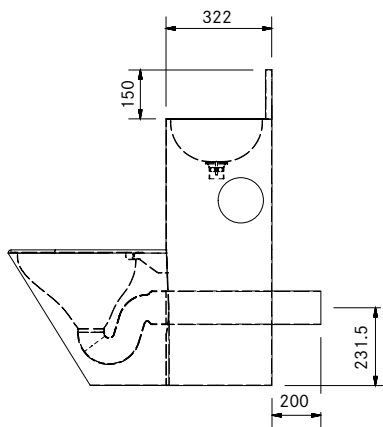
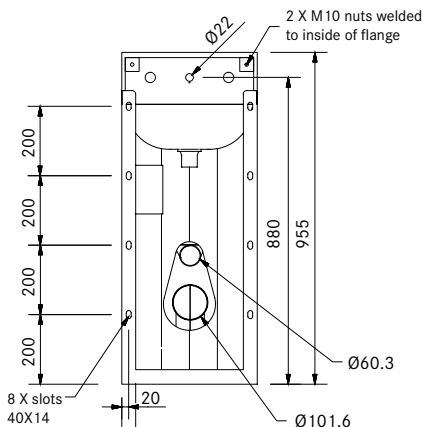
IMAGE	TYPE / MODEL	DESCRIPTION	PRODUCT CODE
 <p>RIGHT HAND PAN</p>		HDTX850 Heavy Duty Combi Unit (Bolt Fixing Type)	
		Franke Model HDTX850 Bolt Fix Combination WC Pan and Wash Hand Basin. Unit to be manufactured from Grade 304 (18/10) Stainless Steel, 1,2mm gauge pan and basin, with 1,6mm gauge pedestal. Unit to be supplied complete with an integrated wash hand basin with a pressed perforated outlet to suit a 40mm waste fitting, and 150mm high splash back with a provision for the basin spout and push buttons for the flush valves which must be installed in the duct behind the unit. Pan to be positioned to the left, right or centre...(please specify). The pedestal of the unit to be manufactured with a built-in toilet roll holder (optional...please specify) and flanges with fixing slots for 8mm threaded rods to secure the unit through the wall (Threaded rods elsewhere measured). WC pan to flush with 4 and 6 litres of water. Pan to withstand point load of 400kg as per international standards.	
		<ul style="list-style-type: none">- Grade 304 (18/10) polished Stainless Steel- Hygienic pan cannot chip or crack- Designed for the highest level of anti-vandal resistance- Heavy duty construction pedestal 1,6mm and pan 1.2mm gauge- Integral wash hand basin- Space saving- Pan position can be left, right or centre- One pieced pressed bowl- Supplied with PVC waste fitting	
		Combi Units without Toilet Roll holders:	
 <p>COMBI UNIT WITH CENTRE PAN TOP VIEW</p>	HDTX 850	Combi Unit with Centre Pan	2550004
	HDTX 850	Combi Unit with Left Hand Pan	2550004 -001
	HDTX 850	Combi Unit with Right Hand Pan	2550004 -002
		Combi Units with Toilet Roll holders:	
 <p>COMBI UNIT WITH CENTRE PAN (R/SIDE TOILET ROLL) SIDE VIEW</p>	HDTX 850	Combi Unit with Right Hand Pan	2550005 -001
	HDTX 850	Combi Unit with Left Hand Pan	2550005 -002
	HDTX 850	Combi Unit with Centre Pan	2550005
		Accessories	
		Optional Installation Accessories:	
		Galvanised Mild steel Security Frame with anti-escape bars. (frame built into the brick work behind the unit).	2550001
		Optional Plumbing Fittings:	
		1 x Basin Valve (Cobra - KM1-00F)	2570020
		1 x Toilet Valve (Cobra FJ 4-203F)	2570019
		1 x Flexible Hose (Walcro 15mm x 600mm)	2120119
		and 1 x Spout (Walcro - CIRS Spout Basin 15mm)	2150012
 <p>COMBI UNIT WITH CENTRE PAN BACK VIEW</p>			

IMAGE	TYPE / MODEL	DIMENSIONS (L X D X H)	PRODUCT CODE
-------	--------------	------------------------	--------------



Security Frame For HDTX850 Combi Unit

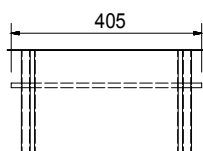
Franke Security Frame for HDTX850 Combi Unit. Unit to be manufactured from galvanised mild steel, 425x222x965mm wall sleeve with 6x13mm Ø anti-escape bars, positioned to allow access to the inlet and outlet. Unit to be built into brick-work and combi unit to then be mounted to the unit.

- Galvanised mild steel, 1.6mm gauge
- Designed for HDTX850 Combi Unit
- Designed for the highest level of anti-vandal resistance
- Frame built into brick-work behind the combi unit

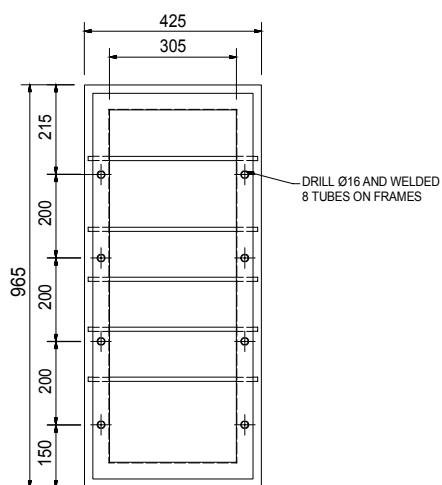
SECURITY FRAME

425x222x965mm

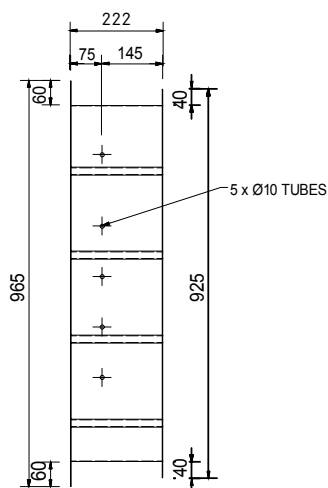
2550001



TOP VIEW



FRONT VIEW



SIDE VIEW

WC Pans


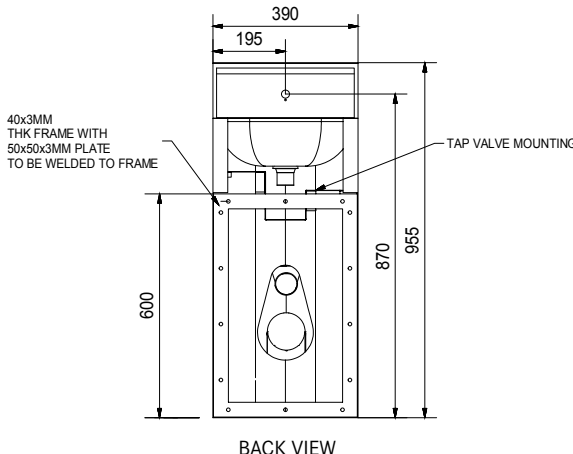
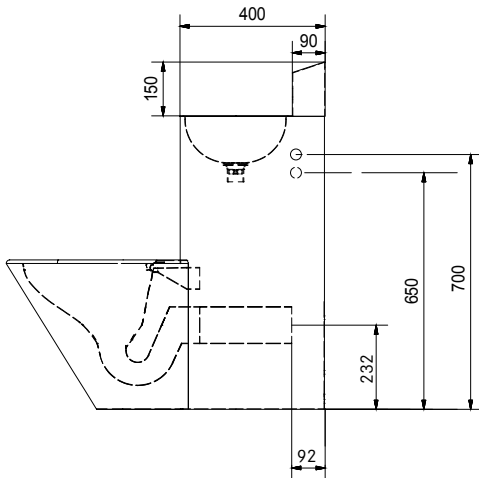
IMAGE	TYPE / MODEL	DESCRIPTION	PRODUCT CODE																	
		<h2>HDTX860 Heavy Duty Combi Unit (Push-Fit/Bracket Fixing Type)</h2> <p>Franke Model HDTX860 Push Fit Combination WC Pan and Wash Hand Basin. Unit to be manufactured from Grade 304 (18/10) Stainless Steel, 1,2mm gauge pan and basin, with 1,6mm gauge pedestal. Unit to be supplied complete with an integrated wash hand basin, with a pressed perforated outlet to suit a 40mm waste fitting and 150mm high splash back with a provision for the basin spout. Pan to be positioned to the left, right or centre...(please specify). The pedestal of the unit to be manufactured with a built-in toilet roll holder (optional...please specify) and eight 6mm slots and security screws to secure the unit to the wall mounting frame. Pedestal with provision for push buttons for the flush valves which is installed in the unit. The Stainless Steel wall mounting frame to be 3mm thick with eight nutserts and to be fixed to the wall with anchor bolts (bolts elsewhere measured). WC pan to flush with 4 and 6 litres of water. Pan to withstand point load of 400kg as per international standards.</p> <ul style="list-style-type: none">- Grade 304 (18/10) polished Stainless Steel- Hygienic pan cannot chip or crack- Designed for the highest level of anti-vandal resistance- Heavy duty construction pedestal 1,6mm and pan 1.2mm gauge- Integral wash hand basin- Space saving- Pan position can be left, right or centre- One pieced pressed bowl- Supplied with PVC waste fitting																		
 <p>BACK VIEW</p>		<p>Combi Units without Toilet Roll holders:</p> <table><tr><td>HDTX 860</td><td>Combi Unit with Centre Pan</td><td>2550003</td></tr><tr><td>HDTX 860</td><td>Combi Unit with Left Hand Pan</td><td>2550003-001</td></tr><tr><td>HDTX 860</td><td>Combi Unit with Right Hand Pan</td><td>2550003-002</td></tr></table>	HDTX 860	Combi Unit with Centre Pan	2550003	HDTX 860	Combi Unit with Left Hand Pan	2550003-001	HDTX 860	Combi Unit with Right Hand Pan	2550003-002									
HDTX 860	Combi Unit with Centre Pan	2550003																		
HDTX 860	Combi Unit with Left Hand Pan	2550003-001																		
HDTX 860	Combi Unit with Right Hand Pan	2550003-002																		
 <p>SIDE VIEW</p>		<p>Combi Units with Toilet Roll holders:</p> <table><tr><td>HDTX 860</td><td>Combi Unit with Right Hand Pan</td><td>2550006</td></tr><tr><td>HDTX 860</td><td>Combi Unit with Left Hand Pan</td><td>2550006-001</td></tr><tr><td>HDTX 860</td><td>Combi Unit with Centre Pan</td><td>2550006-002</td></tr></table> <p>Optional Plumbing Fittings:</p> <table><tr><td>1 x Basin Valve (Cobra - KM1-00F)</td><td>2570020</td></tr><tr><td>1 x Toilet Valve (Cobra FJ 4-203F)</td><td>2570019</td></tr><tr><td>1 x Flexible Hose (Walcro 15mm x 600mm)</td><td>2120119</td></tr><tr><td>and 1 x Spout (Walcro - CIRS Spout Basin 15mm)</td><td>2150012</td></tr></table>	HDTX 860	Combi Unit with Right Hand Pan	2550006	HDTX 860	Combi Unit with Left Hand Pan	2550006-001	HDTX 860	Combi Unit with Centre Pan	2550006-002	1 x Basin Valve (Cobra - KM1-00F)	2570020	1 x Toilet Valve (Cobra FJ 4-203F)	2570019	1 x Flexible Hose (Walcro 15mm x 600mm)	2120119	and 1 x Spout (Walcro - CIRS Spout Basin 15mm)	2150012	
HDTX 860	Combi Unit with Right Hand Pan	2550006																		
HDTX 860	Combi Unit with Left Hand Pan	2550006-001																		
HDTX 860	Combi Unit with Centre Pan	2550006-002																		
1 x Basin Valve (Cobra - KM1-00F)	2570020																			
1 x Toilet Valve (Cobra FJ 4-203F)	2570019																			
1 x Flexible Hose (Walcro 15mm x 600mm)	2120119																			
and 1 x Spout (Walcro - CIRS Spout Basin 15mm)	2150012																			

IMAGE	TYPE / MODEL	DIMENSIONS (L X D X H)	PRODUCT CODE
-------	--------------	------------------------	--------------

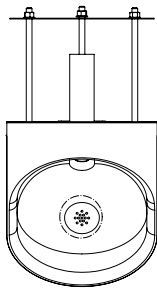


HDTX 538 Wall Hung Urinal

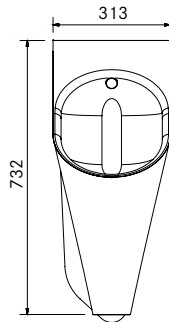
NEW

Franke Model HDTX 538 Wall Hung Urinal, 313x732x340mm with a pressed oval bowl. Unit to be manufactured from Grade 304 Stainless Steel, 1,2mm gauge. Bowl with a security type integrated perforated waste outlet and fitted with three x 8mm diameter x 250mm long galvanised mild steel threaded rods for fixing the urinal to the wall.

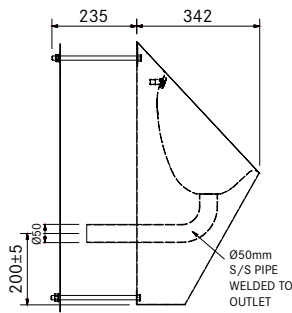
- Grade 304 (18/10) Stainless Steel
- Heavy duty construction external surfaces of 1.2mm gauge Stainless Steel
- Provision for secured fixing to wall
- Back entry perforated outlet to suit standard 50mm waste pipe connection



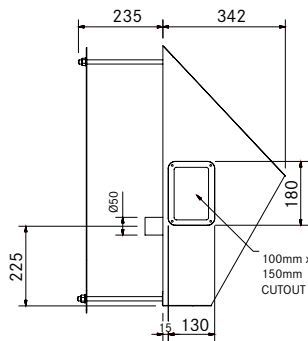
TOP VIEW



FRONT VIEW



HDTX538 WITH EXTENSION PIPE
SIDE VIEW



HDTX538 WITH INSPECTION PANEL
SIDE VIEW

HDTX 538 WALL HUNG URINAL WITH PERFORATED WASTE & INSPECTION PANEL

313x732x340mm

2540144-005

HDTX 538 WALL HUNG URINAL WITH PERFORATED WASTE & 50MM DIAMETER EXTENSION PIPE

313x732x340mm

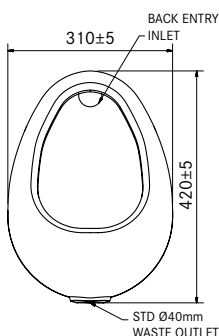
2540144-006



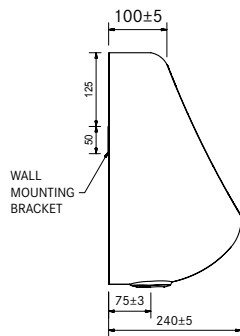
SBE Barron Bowl Urinal (Security Type)

Franke Model SBE (Back Entry Inlet) Security Barron Bowl Urinal, 316x425x241mm. Unit to be manufactured from Grade 304 (18/10) Stainless Steel, 1,2mm gauge. Unit to be supplied complete with a perforated waste outlet, with a 50mm diameter Stainless Steel outlet pipe which extends 250mm through the back wall. Bowl to be fitted with two security type mounting brackets for fixing with 4xM8 wall bolts for mounting to the wall. (bolts elsewhere measured).

- Grade 304 (18/10) Stainless Steel
- Heavy duty construction external surfaces of 1.2mm gauge Stainless Steel
- Provision for secured fixing to wall
- Back entry perforated outlet to suit standard 50mm waste pipe connection



FRONT VIEW



SIDE VIEW

SBE BARRON BOWL URINAL

316x425x241mm

2540060

IMAGE	TYPE / MODEL	DIMENSIONS (L X D X H)	PRODUCT CODE
  <p>SIDE VIEW</p> <p>FRONT VIEW</p>	SAPSDF Combination Wash Hand Basin & Drinking Fountain	370x490x125mm	2520011

Franke Model SAPSDF Combination Wash Hand Basin & Drinking Fountain, size 370x490x125mm manufactured from Grade 304 (18/10) Stainless Steel, 1,2mm gauge. Unit to be manufactured as a welded construction with a 40mm waste outlet and is to be recessed 125mm into a single brick cavity. Basin is fitted with a self - closing metering bib tap at the top of the unit and is fitted with fixing lugs to secure the basin into the wall.

- Grade 304 (18/10) Stainless Steel
- Vandal proof
- Unit suitable for plastered and face brick walls
- Basin recessed into the wall
- Application: installed in cells of Prisons & Police Stations
- No crevices, fully welded construction
- All plumbing built into the wall and therefore unexposed
- Fitted with a self-closing metering tap

WHB & DRINKING FOUNTAIN

SAPX597 Wall & Floor Mounted Shrouded WC Pan - Maximum Security - with 450mm extended inlet & outlet, flanges outwards.

Franke Model SAPX597 Heavy Duty Wall and Floor Mounted WC Pan 395x550x445mm high. Unit to be manufactured from Grade 304 (18/10) Stainless Steel, 1,2mm and 1, 6mm gauge. Unit to be manufactured with a pressed concealed flushing rim and integral "P" Trap with a 100mm outlet pipe and a 38mm back entry inlet pipe extended to 450mm. The pan to be manufactured with a shroud, with external flanges for securing the pan through the wall and into floor with anchor bolts. (Bolts elsewhere measured).

- Grade 304 (18/10) Stainless Steel 1.2mm / 16mm gauge
- Hygienic and vandal resistant
- Pressed components to ensure consistent quality and performance
- 6 litres flushing
- Heavy duty outer casing conceals the plumbing
- Pressed concealed flushing rim
- Provision for secured fixing through wall and into floor
- Optional outlet and flush inlet pipes are available, which can shortened /lengthened to suit plumbing.
- Sub-assembly of pan is pickled and passivated to prevent corrosion of the welding inside the inlet and outlet pipes.

SAPX597 395x550x445mm Back Entry **2540164**

Model Description

SAPX 597 with external flanges with 450 mm long extended pipes

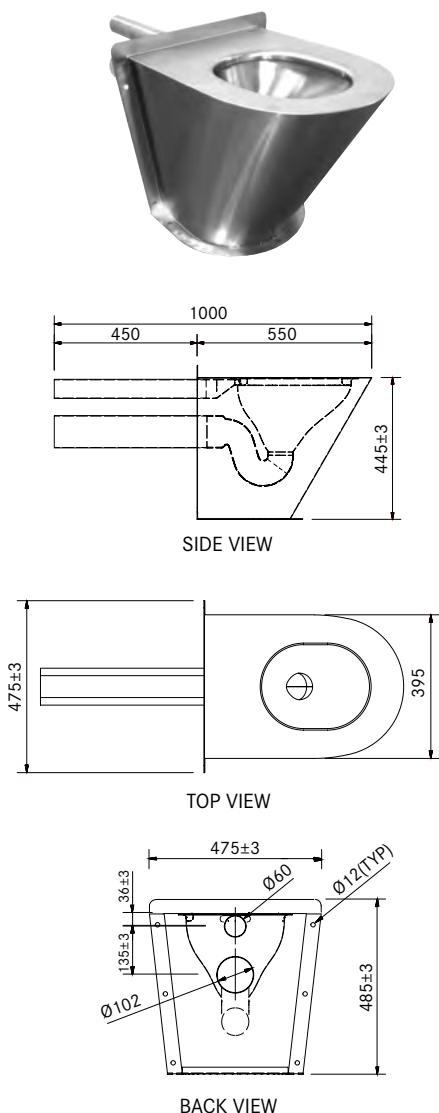

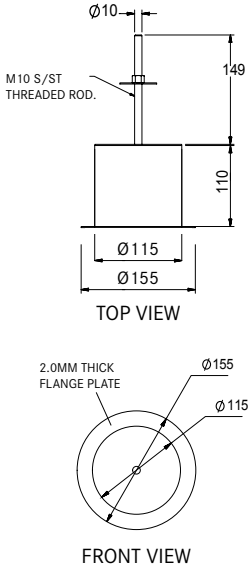

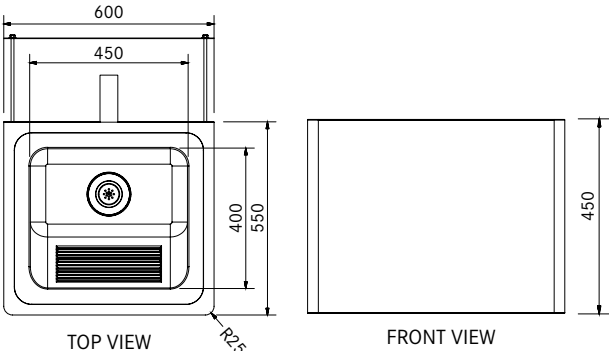
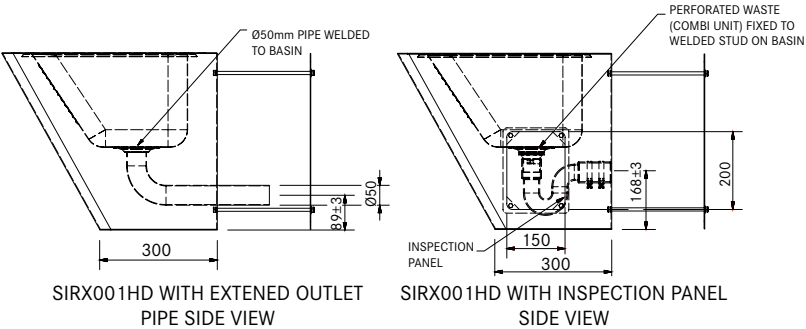

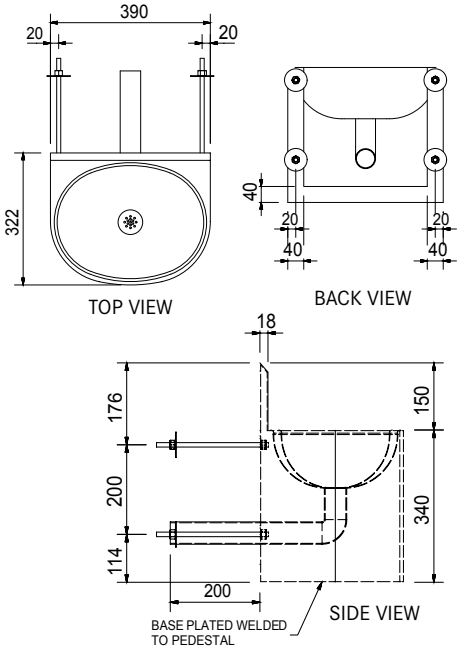

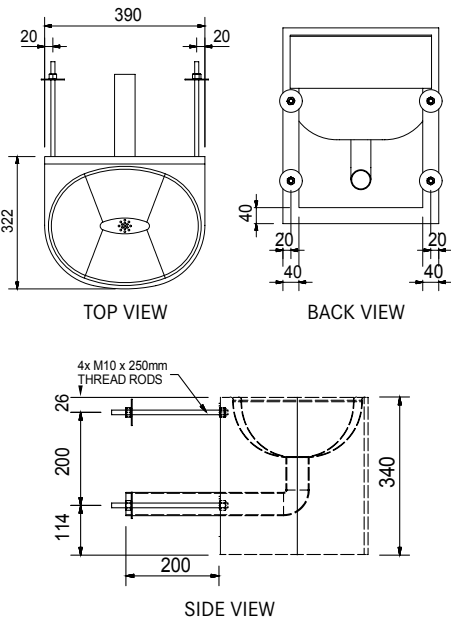


IMAGE	TYPE / MODEL	DIMENSIONS (D X H)	PRODUCT CODE
  <p>TOP VIEW</p> <p>FRONT VIEW</p>	<p>Recessed Type Toilet Roll Holder</p> <p>Franke recessed type toilet roll holder 118Øx110mm manufactured from Grade 304 (18/10) Stainless Steel, 2mm gauge. Unit with 20mm flange and 2 off x M10 threaded rods for bolting the unit through the wall.</p> <ul style="list-style-type: none"> - Grade 304 (18/10) Stainless Steel - Provision for secured fixing through wall - Heavy duty construction external surfaces of 1.6mm gauge Stainless Steel <p>RECESSED TOILET ROLL HOLDER</p>	<p>155Øx260mm</p>	<p>2120037</p>

	<p>SIRX001HD Single Wash Trough</p> <p>Franke model SIRX001HD Wall Mounted Wash Trough 600x550x240mm deep manufactured from Grade 304 (18/10) stainless steel 1,2mm thick. Unit is manufactured with a pressed wash trough 500x450x240mm deep with a perforated waste and a 50mm diameter stainless steel outlet pipe which extends 250mm. The wash trough is manufactured with an outer casing which is supplied with galvanised mild steel threaded rods for securing the wash trough through the wall.</p> <ul style="list-style-type: none"> - Grade 304 (18/10) Stainless Steel - Provision for secured fixing to wall - Heavy duty construction external surfaces of 1.2mm gauge Stainless Steel - Back entry outlet to suit 50mm waste pipe connection 	<p>NEW</p>
 <p>TOP VIEW</p> <p>FRONT VIEW</p>	<p>SIRX001HD WASH TROUGH WITH PERFORATED OUTLET & 50 MM EXTENDED OUTLET PIPE</p> <p>SIRX001HD WASH TROUGH WITH PERFORATED OUTLET & INSPECTION PANEL</p>	<p>2560055</p> <p>2560056</p>
 <p>SIRX001HD WITH EXTENDED OUTLET PIPE SIDE VIEW</p> <p>SIRX001HD WITH INSPECTION PANEL SIDE VIEW</p>		

Heavy Duty Wash Hand Basins

IMAGE	TYPE / MODEL	DIMENSIONS (L X D X H)	PRODUCT CODE
 	HDS Heavy Duty Surround Wash Hand Basin - Security Type		
	<p>Franke Model HDS Surround Wall Mount Basin, 390x322x340mm. Unit to be manufactured from Grade 304 (18/10) Stainless Steel, 1.2mm gauge. Unit to be manufactured with a pressed bowl 360x280x140mm deep and an outer casing with a welded base plate. Basin to be supplied complete with a pressed perforated waste outlet, with a 50mm diameter Stainless Steel outlet pipe which extends 250mm. Unit to be supplied with four x 8mmØx250mm long galvanised mild steel treaded rods for fixing the basin to the wall.</p> <ul style="list-style-type: none"> - Grade 304 (18/10) polished Stainless Steel - Heavy duty construction external surfaces of 1.2mm gauge - Basin with pressed bowl - Hygienic and vandal resistant - 150mm splashback with tap holes (HDSSB Model) - Provision for secured fixing to wall - Fully enclosed with concealed plumbing and extended Stainless Steel outlet through wall - Heavy duty construction external surfaces of 1.2mm gauge Stainless Steel - Back entry perforated outlet to suit standard 50mm waste pipe connection 		
	HDS BASIN ONLY	390x322x340mm	2520008

 	HDSSB Heavy Duty Surround Wash Hand Basin - Security Type - with Splash Back		
	<p>Franke Model HDSSB Surround Wall Mount Basin, 390x322x340mm, with a 150mm splash back. Unit to be manufactured from Grade 304 (18/10) Stainless Steel, 1.2mm gauge. The unit to be manufactured with a pressed bowl 360x280x140mm deep and an outer casing with a welded base plate. Basin to be supplied complete with a pressed perforated waste outlet, with a 50mm diameter Stainless Steel outlet pipe which extends 250mm. Unit to be supplied with four x 8mmØx250mm long galvanised mild steel treaded rods for fixing the basin to the wall.</p> <ul style="list-style-type: none"> - Grade 304 (18/10) polished Stainless Steel - Heavy duty construction external surfaces of 1.2mm gauge - Basin with pressed bowl - Hygienic and vandal resistant - 150mm splashback with tap holes (HDSSB Model) - Provision for secured fixing to wall - Fully enclosed with concealed plumbing and extended Stainless Steel outlet through wall - Heavy duty construction external surfaces of 1.2mm gauge Stainless Steel - Back entry perforated outlet to suit standard 50mm waste pipe connection 		
	HDSSB BASIN WITH SPLASHBACK	390x322x340mm	2520009

Heavy Duty Wash Hand Basins

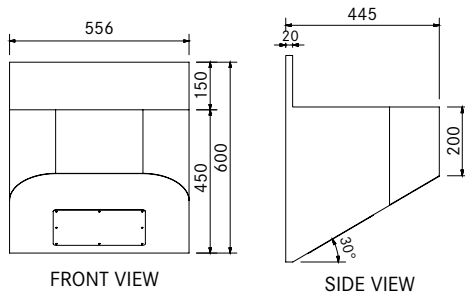
IMAGE	TYPE / MODEL	DIMENSIONS (L X D X H)	PRODUCT CODE
-------	--------------	------------------------	--------------



HDWHB Heavy Duty Wash Hand Basin Security Type

Franke Wash Hand Basin Wall Mount Basin 556x445x600mm with a 150mm splash back manufactured from Grade 304 (18/10) Stainless Steel 1.2mm gauge in a satin finish. The unit has a pressed bowl 410x300x140mm deep and a polished outer casing with a 34 degree angled base with an inspection panel with security screws. Unit complete with a 40mm perforated waste outlet. Basin supplied with four 8x250mm long galvanised mild steel treaded rods for fixed through the wall.

- Grade 304 (18/10) polished Stainless Steel
- Fully enclosed with concealed plumbing and extended outlet through wall
- Heavy duty construction external surfaces of 1.2mm gauge Stainless Steel
- Back entry perforated outlet to suit standard 50mm waste pipe connection
- 35 Degree angle base with an inspection panel with security screws



HDWHB WASH HAND BASIN

556x445x600mm

2520017



HDSWMB Heavy Duty Surround Wash Hand Basin

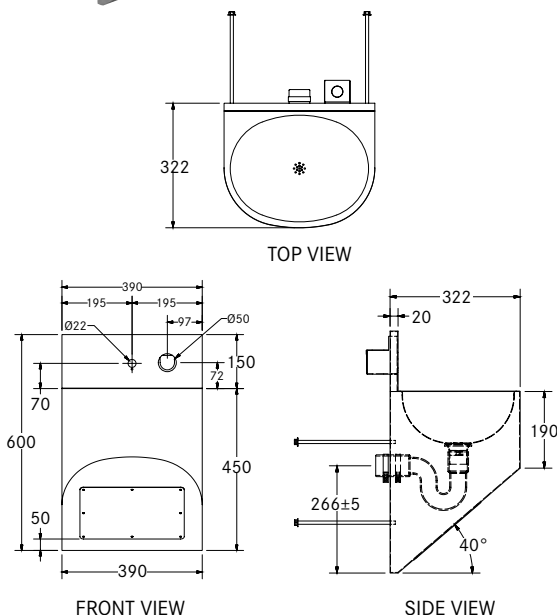
NEW

Franke Surround Wall Mount Basin 390x322x600mm with a 150mm splash back manufactured from Grade 304 (18/10) Stainless Steel 1.2mm gauge in a satin finish. The unit has a pressed bowl 360x280x140mm deep and a polished outer casing with a 40 degree angled base with an inspection panel with security screws. Unit complete with a 40mm perforated waste outlet. Basin supplied with four 8mmx250mm long galvanised mild steel treaded rods for fixed through the wall.

- Provision for secured fixing through wall
- Fully enclosed with concealed plumbing and extended outlet through wall
- Heavy duty construction external surfaces of 1.2mm gauge Stainless Steel
- Back entry perforated outlet to suit standard 50mm waste pipe connection
- 40 Degree angle base with an inspection panel with security screws

Included Fittings

Walcro 155UWS Metering Basin Valve
Walcro BBD/15 Basin Spout



HDSWMB HEAVY DUTY WASH HAND BASIN

390x322x600mm

2520023

FRANKE SOUTH AFRICA

CALL CENTRE

Tel 0861 372 653

Fax 0866 592 073

enquiry.fsa@franke.com

www.franke.co.za

DURBAN

1194 South Coast Road,
Mobeni, Durban, 4092.

South Africa

Tel +27 31 450 6300

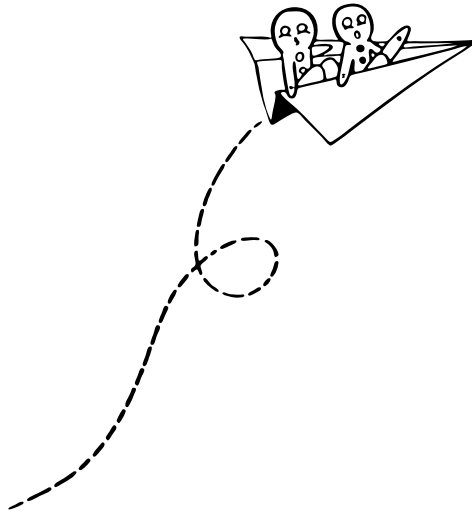
Fax +27 31 450 6304

GAUTENG

77 Roan Crescent,
Sage Corporate Park North,
Old Johannesburg Road,
Midrand, 1682
South Africa

CAPE TOWN

Unit 1, 10 Gold Street,
Northgate Business Park, Northgate Estate,
Cape Town, 7405
South Africa



DISCLAIMER

The information and dates supplied in this brochure are based on the information believed to be reliable, however are not binding and inaccuracies may occur. Franke reserves the right to change Specification and design at any time without notice.

© 2017 by Franke South Africa. All rights reserved under the Copyright Act of 1987 with the amendments. Reproduction of any of the content, full or partial, is allowed only with prior written approval of Franke South Africa. No reasonable requests will be refused provided the conditions as laid out are met.



makeitwonderful.co.za



Make
it
Wonderful

FSA1707