

# DEKO



## DEKO RANGE

Washer-disinfectors

Product Guide



# Index

|                       |         |
|-----------------------|---------|
| DEKO 190 .....        | 2 - 5   |
| DEKO 25.....          | 6 - 8   |
| DEKO 260.....         | 9 - 12  |
| DEKO 2000.....        | 13 - 16 |
| DEKO 2200 .....       | 17 - 18 |
| DEKO Accessories..... | 19 - 22 |



## DEKO 190

|                            |   |
|----------------------------|---|
| Dental Practices           |   |
| Veterinarians              |   |
| Mortuaries                 |   |
| Prisons                    | ✓ |
| Doctors<br>(Small Surgery) |   |
| Old Age Homes              | ✓ |
| Mental Clinics             | ✓ |
| Small Clinics              |   |
| Laboratories               |   |
| Clinics                    |   |
| Hospitals                  | ✓ |



DEKO 190

Washer-disinfector for human waste containers

| IMAGE                                                                             | TYPE / MODEL                                                                                                                                                                                                                                                                                                                                                                                                                                                                                                                                                                                                                                                                                                                                                                                                    | PRODUCT CODE |
|-----------------------------------------------------------------------------------|-----------------------------------------------------------------------------------------------------------------------------------------------------------------------------------------------------------------------------------------------------------------------------------------------------------------------------------------------------------------------------------------------------------------------------------------------------------------------------------------------------------------------------------------------------------------------------------------------------------------------------------------------------------------------------------------------------------------------------------------------------------------------------------------------------------------|--------------|
|  | DEKO 190                                                                                                                                                                                                                                                                                                                                                                                                                                                                                                                                                                                                                                                                                                                                                                                                        |              |
|                                                                                   | DEKO 190 Base Model                                                                                                                                                                                                                                                                                                                                                                                                                                                                                                                                                                                                                                                                                                                                                                                             | 355011       |
|                                                                                   | <b>Specifications</b>                                                                                                                                                                                                                                                                                                                                                                                                                                                                                                                                                                                                                                                                                                                                                                                           |              |
|                                                                                   | <p>DEKO Model 190 Bedpan washer, 630 x 600 x 1290mm, manufactured from Grade 304 stainless steel with an internal washing chamber no less than 480 x 360 x 340 mm. The Bedpan washer has the ability, but is not limited to, washing a maximum of 2 bedpans with lids and 4 urine bottles in a single cycle. The unit to be fitted with adjustable feet and to be freestanding with a front loading door that prevents spillage. The outlet diameter must be 110mm and the unit is to comply with the ISO 15883 specification. The Bedpan washer must have a built in tank for the recirculation of water with a pump of no less than 600l per minute to compensate for any drop in incoming water pressure. Unit to be manufactured with no less than 3 rotating and 8 fixed wash jets. Contact 0861372653</p> |              |

DEKO 190 LC Model

Safe and secure

The door is locked securely throughout the cycle. The green indicators will advise when the door is unlocked for opening. An audible indicator may be added to draw attention to the ending of the cycle.

In order to guarantee that the values of the critical process variables were truly obtained and as programmed, the DEKO 190 is equipped with the verification level A – independent temperature verification sensor.

Quiet, efficient and reliable

The DEKO 190 occupies its space efficiently. One unit requires only W600 x D630 mm of floor space. Connections to water, electricity and drain are provided with all necessary safety features. Regular control & maintenance of the machine is made quick and easy by the service mode of the microprocessor and the easily accessible components. Water is taken into the chamber from the integrated water tank. User and Maintenance Manuals include all relevant details and instructions required. Any information, advice, personnel training and service calls are attended to with the utmost dedication and urgency. Availability of spares is guaranteed for a minimum of 10 years after date of personnel training and service calls are attended to with the utmost dedication and urgency.

Durability and reliability in continuous, heavy and busy institutional operating circumstances have been the key factors in the design of the DEKO 190.

LC Model

Cycles can be altered to meet almost any special requirement, though the standard requirements are met with the fixed, tested and approved cycles pre-programmed by the manufacturer. The 3-level access code system protects any unauthorised changes to the set parameters. 2x20 character backlit LCD information & control panel provides the means to view cycle information in real time i.e. cycle and phase name and temperature.



The DEKO 190 LC presents the latest technology in user interface applications in the washer-disinfectors. The high remaining cycle time. The intelligent software provides you with advice on service actions. The maintenance and service file system restores valuable information for technical performance follow-up and evaluation.

For more information on the DEKO 190 LC Models please contact our call centre on 0861 372 653.

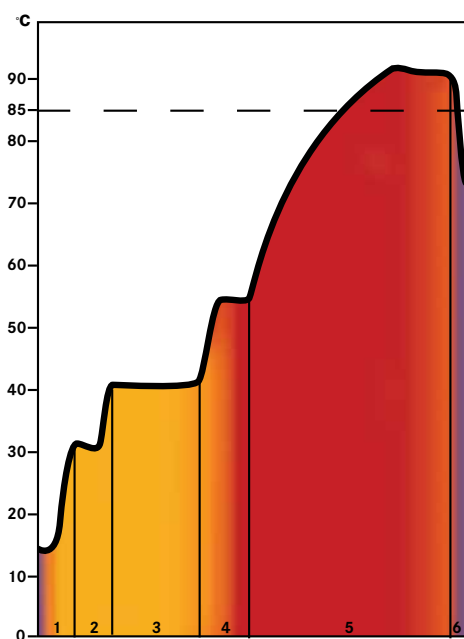
#### Guaranteed performance

The DEKO 190 is intended for emptying, flushing, cleaning and thermally disinfecting by steam, human waste containers intended for re-use such as;

- **Bedpans and lids**
- **Supports for disposable single-use bedpans**
- **Patient wash bowls**
- **Urine bottles**
- **Mop buckets**
- **Suction bottles**
- **Measuring jugs**
- **Kidney dishes**
- **And all other reusable products used for similar purposes within patient care**

The washing spray patterns are delivered through 3 rotating + 8 fixed spray jets guaranteeing contact with all surfaces and crevices of items with varying design.

The DEKO 190 is designed and constructed to meet the standard performance and design requirements stated in ISO 15883-1 Washer-disinfectors - General requirements and in ISO 15883-3 Requirements and tests for washer-disinfectors employing thermal disinfection for human waste containers, together with, the Safety requirements stated in IEC 61010-2-045: Particular requirements for washer-disinfectors used in medical, pharmaceutical, veterinary and laboratory fields.



Temperatures reached during each cycle



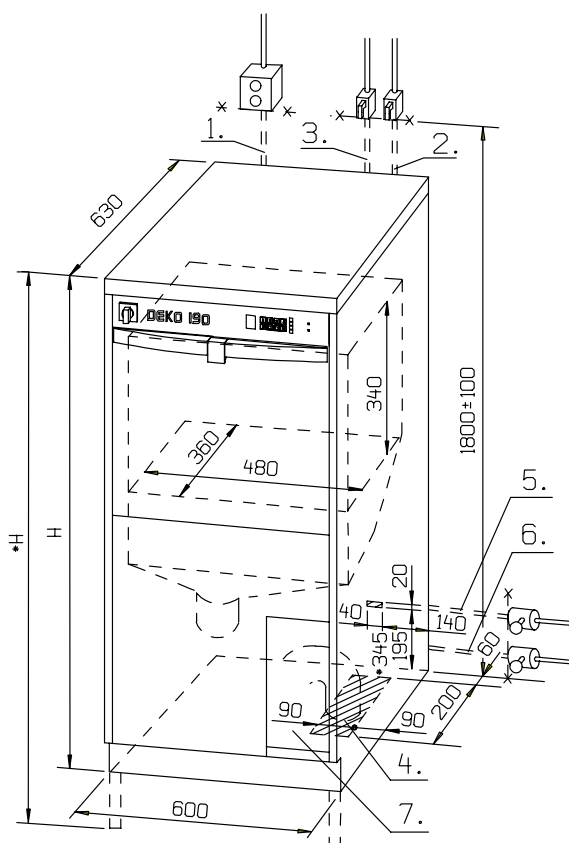
## Summary of features

- Overall dimensions; W600 x D630 x H1290 ±10 mm
- Wash chamber dim.; W480 x D360 x H640 mm
- Holder for 2 bedpans
- Water jet nozzles for 4 urine bottles
- Fold-down wire shelf for various re-usable items
- In-built steam generator
- Powerful re-circulation water pump, Output 600 L/min
- Framework, panels and wash chamber all made of Stainless steel
- Fully automatic microprocessor control
- Independent temperature verification sensor and Indicator
- Cycle selection & start keys
- In-process indication
- Cycle & phase info
- Cycle complete indication: a green led
- Fault indication: red flashing led
- Secure, tested cycle files with denied access
- Multi-level access code system with special codes.  
For: maintenance, authorised person (LC Model)
- Customised cycles
- Component test mode
- 3 Rotating + 8 fixed wash jets
- Integrated automatic detergent dosing system
- Low level of detergent indication
- Compartment for the process chemical container
- Entry port for test temperature sensor leads
- Load temperature protection and over temperature Cut-outs
- Automatic foam and washing water pressure control System
- Cold and hot water connection hoses ½" BSP
- Drain outlet diameter 90-100 mm
- Sound and heat insulated
- Vapour condenser
- Height adjustable feet

#### Options:

- Lockable door for chemical container compartment
- Descale dosage pump for steam generator
- Distinct cycle end alarm





## TECHNICAL DATA

Model **DEKO190**

### Outer dimensions mm:

|             |           |
|-------------|-----------|
| Width       | 600       |
| Depth       | 630       |
| Height      | 1290/1460 |
| Weight, kgs | 130       |
| Weight, lbs | 287       |

### Gross wash chamber volume L

72

### Inner dimensions mm:

|                |     |
|----------------|-----|
| Chamber height | 340 |
| Chamber width  | 480 |
| Chamber depth  | 360 |

### Water volume / one cycle phase, excl. disinf., L

9

### Electricity (1.)

240 / 400 V 3 N 50 Hz 7,5 kW 16 A or,  
240 / 400 V 3 N 50 Hz 6,6 kW 10 A or,

**Available as 1 N on request (Single Phase)**

**Further details on request.**

### Capacity & effects:

|                                          |            |
|------------------------------------------|------------|
| Heating power, kW                        | 6,6 or 7,5 |
| Circulation pump 600 L/min, kW           | 1,5        |
| Outlet size diameter in mm (4.)          | 90/110     |
| Cold water hose L=2 m (2.)               | R1/2"      |
| Hot water hose L=2 m (3.)                | R1/2"      |
| Min/max water pressure, bar              | 1/8        |
| Min/max water pressure, psi              | 15/115     |
| Min/Max steam supply (D-model only), bar | 1-3        |
| Min/Max steam supply (D-model only), psi | 15-45      |
| *Steam hose L=1,2 m (D-model only)       | (5.) R1/2" |
| *Condense L=1,2 m (D-model only)         | (6.) R1/2" |

### Detergent container housing

(7.)

\*Not Available in South African Model

Subject to changes without further notice.

Please ask the supplier for confirmation as required.

### Included as standard:

- Holder for 2 bedpans
- 4 urine bottle nozzles
- Wash shelf
- Detergent pump

### Certificates / Tests / Approvals:

ISO 14001:1996  
ISO 13485  
SIS TR-3:2002  
ISO EN 15883-1, 15883-3  
IEC 61010-1  
IEC 61010-2-045  
IEC 61326-1  
CE 0537



## DEKO 25

|                            |   |
|----------------------------|---|
| Dental Practices           | ✓ |
| Veterinarians              | ✓ |
| Mortuaries                 | ✓ |
| Prisons                    | ✓ |
| Doctors<br>(Small Surgery) | ✓ |
| Old Age Homes              |   |
| Mental Clinics             |   |
| Small Clinics              | ✓ |
| Laboratories               | ✓ |
| Clinics                    | ✓ |
| Hospitals                  | ✓ |



# DEKO 25

Washer-disinfector

DEKO  
25

IMAGE

TYPE / MODEL

PRODUCT CODE



DEKO 25C Model

## DEKO 25

The DEKO 25 can be situated on a dedicated DEKO stand accessory or a cabinet, as well as, be positioned undercounter.

The DEKO 25 meets the performance and design requirements stated in EN ISO 15883 parts 1 & 2, as well as the safety requirements stated in IEC 61010-2-040.

Utilising the power of the 260 litres per minute circulation pump, process and cleaning results are guaranteed throughout the wash chamber. The capacity also allows for the insertion of additional wash racks to facilitate the washing of cannulated instruments, dental handpieces, hoses, glassware and rigid scopes.

**DEKO 25 Base Model**

355001

## Specifications

DEKO Model 25 Instrument washer disinfector, 460 x 580 x 845mm, manufactured from Grade 304 stainless steel with an internal washing chamber of no less than W265 x D390 x H390 mm. The unit must be fitted with adjustable feet and be freestanding to fit under or on top of a counter. Instrument washer must comply with the ISO 15883-1, 15883-2 specification. The unit must have a built in circulation pump of no less than 260l per minute and an interlocking front-opening door with safety lock. The unit is to be manufactured with no less than 2 removable rotating wash arms for ease of cleaning. Contact 0861372653.

## Traceability and Verification

In order to guarantee that the values of the critical process variables were truly obtained and as programmed, the DEKO 25 is equipped with an integrated process verification printer. The critical process values i.e. temperatures, times, pressures, detergent dosage time and volume, faults, as well as descriptive cycle data can be independently recorded for your Quality Assurance System.

Archive information includes: institution name, date and time and machine identification, cycle number, selected cycle name, phase descriptions, detergent dose volume and stage, chamber and wash temperature throughout the process and faults.

## Quiet, efficient and reliable

The DEKO 25 is manufactured using quality polished stainless AISI 304 steel, it is easy to keep clean and is designed to withstand continuous use. Special attention has been given to sound and heat emissions by using the most efficient insulation and environmentally friendly materials.

Durability and reliability will allow continuous use in any busy and demanding environment, these types of heavy workload have been the key factors in the design of the DEKO 25.

## Logic Controlled

The DEKO 25 presents the latest technology in user interface applications in washer-disinfectors. Information & control panel provides the means to view cycle information real time and view the remaining cycle time. Also included is an automatic cycle counter and the intelligent software provides advice on service actions.

## Space Efficient

The DEKO 25 occupies its space efficiently - one unit requires only W600xD500 mm of floor space. Efficient diagnostic is achieved by interrogation of the PLC through the simplistic service mode.

The advanced electronic control system can provide practically an unlimited number of tailored cycles with the 3 most used cycles available at a touch of a button and additional ones by scrolling.

Process parameters are protected by security codes. The machine is facilitated by a 3 level access code to prevent unauthorised use of the machine.

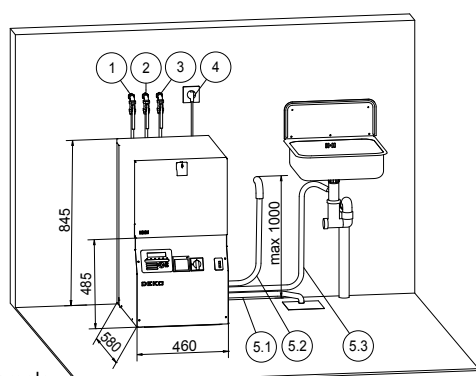


## SUMMARY OF FEATURES

- Overall dim. W460xD580xH845 mm
- Usable wash chamber dim.  
W265xD390xH390 mm
- Powerful circulation water pump, output 260 L/min
- Framework, panels and wash chamber all made of stainless steel
- Interlocking door
- Fully automatic PLC control including back-up batteries for full memory protection
- 3+1 cycle selection buttons (1 scrolling)
- Phase indication as text
- Remaining cycle time indication
- Cycle complete indication as text, a green led and an audible indicator
- Fault indication
- Multi-level access code system. Special codes for: user, maintenance, authorized person
- Practically unlimited number of pre-set cycle library
- Customized cycle files available
- Access to regulation of critical process parameter values with authorized person entry code only
- Cycle in progress: yellow led
- Cycle complete: green led
- Fault indication: red led
- Special service and maintenance control system
  - Malfunction identification
  - Adjustment of controls
  - Calibration of measuring instruments
  - Manual override step by step
  - Component test mode
  - Fault listing
  - Updates by a PC
- 1 sliding wash wire basket
- Automatically connecting / closing wash arm and rack connectors
- 2 rotating wash arms with removable caps facilitating easy cleaning of the inner surfaces of the wash arm. No tools required for removing the wash arms
- Detergent flow control
- Adjustable automatic detergent dosing
- Indication for insufficient volume of detergent to complete cycle
- Boss entry port for test temperature sensor leads
- Load temperature protection and overtemperature cut-outs
- Automatic foam and washing water pressure control system
- Opaque cold and hot water connection hoses ½" BSP
- Drain outlet hose diameter 20mm
- Sound and heat insulated
- Height adjustable feet
- Back syphon Type A air gap protection

## OPTIONS

- Upper basket incl. wash arm
- Max 1 extra detergent pump
- Max 1 extra adjustable rinse aid pump
- Solenoid valve for connection to purified water supply
- Cabinet or a stand for process chemical containers (accessory)



Installation example

## TECHNICAL DATA

| Model                                           | DEKO 25 |
|-------------------------------------------------|---------|
| <b>Outer dimensions mm:</b>                     |         |
| Width                                           | 460     |
| Depth                                           | 580     |
| Height                                          | 845     |
| Weight kg                                       | 60      |
| <b>Wash chamber volume L</b>                    |         |
|                                                 | 40      |
| <b>Usable inner dimensions mm:</b>              |         |
| Chamber height                                  | 390     |
| Chamber width                                   | 265     |
| Chamber depth                                   | 390     |
| Wash levels                                     | 1(+1)   |
| <b>Usable height on lower level, mm</b>         |         |
|                                                 | 250     |
| <b>Usable height on upper level, mm</b>         |         |
|                                                 | 118/138 |
| <b>Wash arms max. (2 as std.)</b>               |         |
|                                                 | 3       |
| <b>Auto-connection for injection tube racks</b> |         |
|                                                 | 1       |
| <b>Loading basket 370x370x80 mm</b>             |         |
|                                                 | 1(+1)   |
| <b>Water volume / one cycle phase, L</b>        |         |
|                                                 | 6.5     |
| <b>Electricity</b>                              |         |
| 240V 1N 50Hz 3.5kW                              | 16A     |

Please specify and contact for further details.

|                                             |       |
|---------------------------------------------|-------|
| <b>Capacity &amp; effects:</b>              |       |
| Heating power kW                            | 3     |
| Heating power kW*                           | 2.5   |
| Circulation pump 260L/min, W                | 540   |
| Outlet pump 28L/min, W                      | 85    |
| Outlet size diameter in mm                  | 20    |
| Outlet hose length 2 m                      |       |
| <b>Cold water hose L=1,5 m</b>              |       |
|                                             | R1/2" |
| <b>Hot water hose L=1,5 m</b>               |       |
|                                             | R1/2" |
| <b>Purified water connection (Optional)</b> |       |
|                                             | R3/4" |
| <b>Min/Max water pressure bar</b>           |       |
|                                             | 1/8   |

Subject to changes without further notice. Please ask the supplier for confirmation as required.

**Included as standard:**

- 1 wash basket
- 2 wash arms
- 1 detergent pump

**Tests / Approvals:**

ISO 9001  
ISO 14001  
ISO 13485  
SIS TR-3:2001  
EN ISO 15883-1, 15883-2  
IEC 61010-2-040  
**CE 0537**

# DEKO 260

|                            |   |
|----------------------------|---|
| Dental Practices           |   |
| Veterinarians              |   |
| Mortuaries                 | ✓ |
| Prisons                    | ✓ |
| Doctors<br>(Small Surgery) |   |
| Old Age Homes              |   |
| Mental Clinics             |   |
| Small Clinics              |   |
| Laboratories               | ✓ |
| Clinics                    | ✓ |
| Hospitals                  | ✓ |





## DEKO 260

The DEKO 260 washer-disinfector-dryer is designed and manufactured to be fully compliant with the requirements of ISO EN 15883 Parts 1 & 2. It builds on the already well proven reliability and simple operation synonymous with Franke and ensures thorough cleaning and efficient processing of reusable medical and laboratory equipment.

### DEKO 260 Base Model

355005

DEKO  
260

## Specifications

DEKO Model 260 instrument washer disinfector, 650 x 625 x 1850 mm, manufactured from Grade 304 stainless steel with an internal washing chamber no less than 507 x 507 x 485 mm. The unit must be fitted with adjustable feet and be freestanding. The Instrument washer must comply with the ISO 15883-1, 15883-2 specification. The unit must have a built in circulation pump of no less than 700l per minute to compensate for any drop in incoming water pressure. Interlocking front-opening door with safety lock. Contact 0861372653.

## Space-Saving Capacity

The design of DEKO 260 means that it can be tailored to meet the individual user's requirements. It is available in single door or double door 'pass through' versions and can be configured with up to 4 sliding, removable shelves. Despite its small footprint the DEKO 260 has a large capacity and can accommodate 16 DIN (240 x 255 x 50 mm) trays over the 4 levels or, alternatively, the full 485 mm chamber height can be utilized. Effective washing is ensured by the use of up to 5, easily checked, rotating wash arms coupled with a wide range of specific racks.

## State-Of-The-Art Control

Control of the DEKO 260 is by a Programmable Logic Controller (PLC) with the most advanced operating system available today. The high resolution, color TFT interface and information display panel means that the machine is simple to use. The display provides clear and informative user and service instructions. To operate the DEKO 260 simply select the appropriate pre-programmed cycle and press the button – the PLC takes care of the rest. The selected cycle, batch number, current cycle phase, chamber temperature, washing pressure and remaining cycle time are all verified and presented on the easy to read display. Security is provided by a three tier password system that allows user, edit and service level access. The precise, electronic control of the DEKO 260 saves time, energy and consumables. The PLC's process control and independent recording accuracy are compliant with the most stringent requirements of ISO EN 15883-1 & 2 for washer disinfectors.

## Sustainable Solutions

The DEKO 260 is designed and constructed with environmental considerations in mind. The all stainless steel frame, panels and chamber are fully recyclable. Unlike general purpose washer disinfectors the robust construction, high quality components and precise process control and verification means that the DEKO 260 will give many years of reliable service even under the most demanding institutional use.

## Smooth Operation

The DEKO 260 provides powerful performance quietly and efficiently. The outer panels and tempered windows are heat and sound insulated. Water connections with slow closing valves and flexible hoses prevent the transfer of sound and vibration. Both the air ventilation and water pipework provide a smooth and efficient flow of fluids.

## Trusted Value

Durability and reliability in continuous, heavy and busy institutional operation have been the key factors in the design of the DEKO 260. User and Maintenance Manuals include all relevant details and instructions as required. Any information, advice, personnel training and service calls are attended to with the utmost dedication and urgency. Availability of spares is guaranteed for the minimum of 15 years after date of shipment and the complete programme and software is lodged securely with an independent body.

# DEKO 260

Washer-disinfector

## SUMMARY OF FEATURES

- Overall dim. W650xD625xH1850 mm
- Usable wash chamber dim. W507xD507xH485 mm
- Powerful 700L/min circulation water pump
- Framework, panels and wash chamber all made of stainless steel
- Interlocking front-opening door(s) provided with insulated glass
- Balancing springs and safety locks
- Fully automatic PLC control including back-up batteries for full memory protection
- 3+1 cycle selection buttons (1 for scrolling),  
Note: optional Graphic Touch-Screen
- Text display and led cycle status indicators mutable cycle complete buzzer
- Multi-level protection code system
- Separate codes for user, maintenance and authorized person fault and warnings information
- Fast dryer with HEPA filter
- Filter quality monitoring and change indication
- Load temperature protection and overtemperature cut-outs automatic foam and washing water pressure control
- Typically between 10 – 60 minutes cycles depending on the load items and the cycle setup
- Dosing of process chemicals by means of peristaltic pumps
- Flow control and optional volume measuring vapour condenser
- Highest independent process verification recording level 'C'
- Integrated process verification printer (optional)
- Remaining cycle time indication
- Integrated space for process chemical containers (optional key lock door)
- Opaque cold and hot water connection hoses ½" BSP
- Drain outlet valve diameter 50 mm or an outlet pump 20 mm sound and heat insulated
- Back syphon Type A air gap protection mutable process complete buzzer

### INCLUDED AS STANDARD

- Digital display & key pad control dryer with HEPA - filter EU13
- Vapour condenser
- Door window(s)
- Detergent pump with flow sensor low level detergent indicator process printer
- 2 wash shelves, 3 wash arms outlet valve

## OPTIONS

- TFT Touch Screen 3,5", USB memory and Ethernet process printer
- Additional wash shelves incl. wash arm
- Verifying washing pressure transmitter
- Second detergent pump
- Rinse aid pump
- Pure water connection for final rinse(s)
- Outlet pump
- Emergency stop switch(-es)
- Equipped for the processing of laboratory utensils excluding dryer

## TECHNICAL DATA

| Type                                    | DEKO 260      |
|-----------------------------------------|---------------|
| <b>Outer dimensions mm:</b>             |               |
| Width                                   | 650           |
| Depth                                   | 625           |
| Height                                  | 1850          |
| Weight kg                               | 180           |
| <b>Gross / usable chamber volume L:</b> |               |
| <b>172 / 124</b>                        |               |
| <b>Usable inner dimensions mm:</b>      |               |
| Chamber height                          | 485           |
| Chamber width                           | 507           |
| Chamber depth                           | 507           |
| Wash levels                             | max 4         |
| <b>Wash arms max: (3 as standard)</b>   |               |
| <b>5</b>                                |               |
| <b>Basket capacity:</b>                 |               |
| SPRI I, 450x340x70 mm                   | 3+6x SPRI III |
| SPRI II 340x250x70 mm                   | 6+6xSPRI III  |
| SPRI III 250x170x70 mm                  | 18            |
| DIN 480x255x50 mm                       | 8             |
| DIN 240x255x50 mm                       | 16            |
| DIN 120x255x50 mm                       | 32            |
| <b>Electricity:</b>                     |               |
| U 400-415V 3N AC 50/60Hz                | 3x16A         |
| <b>Capacity &amp; effects:</b>          |               |
| Total power kW                          | 9,4           |
| Heating power kW                        | 7,5 / 6,6     |
| Dryer kW                                | 2,4           |
| Circulation pump kW                     | 1,9           |
| Water flow L/min                        | 700           |
| Pure water pump kW, optional            | 0,16          |
| <b>Tests &amp; approvals:</b>           |               |
| ISO 14001                               |               |
| ISO 13485                               |               |
| SIS TR-3:2001                           |               |
| EN ISO 15883-1, 15883-2                 |               |
| IEC 61010-2-40                          |               |
| CE 0537                                 |               |

Subject to changes without further notice. Please ask the supplier for confirmation as required.



## OVERALL DIMENSIONS AND MASS

### Outer dimensions:

|                                  |         |
|----------------------------------|---------|
| Width $M_w$                      | 650 mm  |
| Depth $M_d$                      | 625 mm  |
| Height $M_h$                     | 1850 mm |
| Loading height above floor $L_h$ | 820 mm  |

### Chamber dimensions:

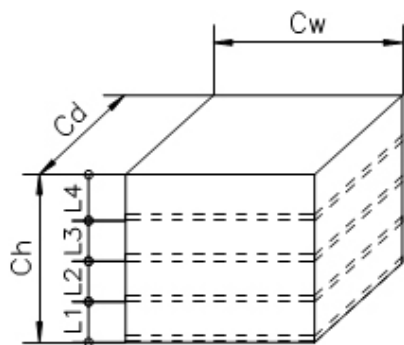
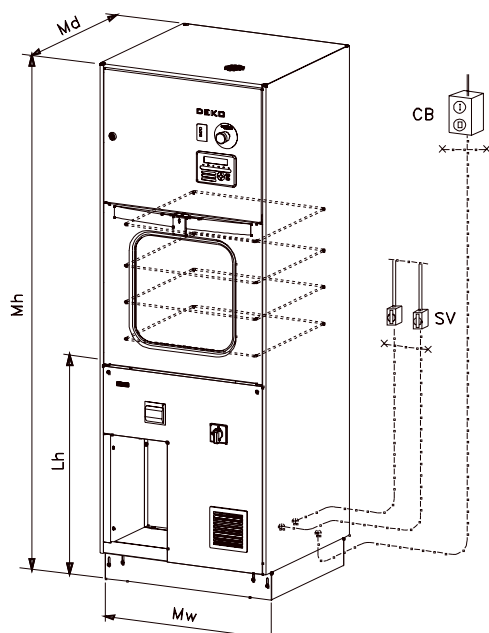
|              |                               |
|--------------|-------------------------------|
| Width $C_w$  | 507 mm                        |
| Depth $C_d$  | 507 mm                        |
| Height $C_h$ | 485 mm                        |
| Volume       | 124 L (0.124 m <sup>3</sup> ) |

### Levels:

|                    |                   |
|--------------------|-------------------|
| Lower level $L_1$  | min/max 58/90 mm  |
| Middle level $L_2$ | min/max 58/90 mm  |
| Middle level $L_3$ | min/max 75/107 mm |
| Upper level $L_4$  | 75 mm             |

### Mass:

|                            |                          |
|----------------------------|--------------------------|
| Weight with drying unit    | 180 kg                   |
| Weight without drying unit | 170 kg                   |
| Floor loading              | 0.04 kN./cm <sup>2</sup> |



### MODELLING:

L= laboratory

X= pass-through

K= Dryer

DEKO 260LX = lab pass-through model

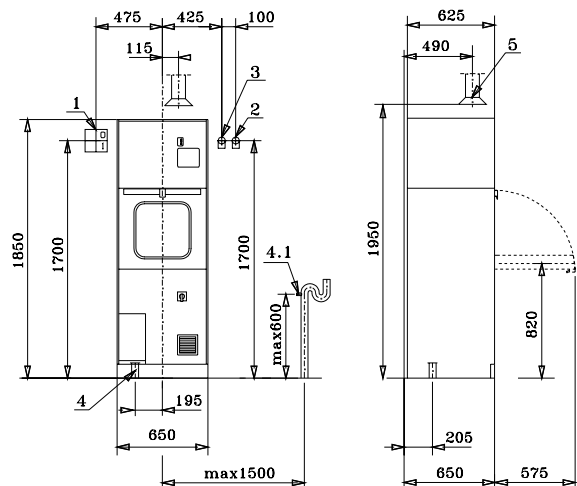
DEKO 260 = single-door

## INSTALLATION

1. Circuit breaker (supplied by the buyer)
2. Cold water R1/2" (female), shut off valve (supplied by the buyer)
3. Warm water R1/2" (female), shut off valve (supplied by the buyer)
4. Drain outlet NS dia 50 mm (or 20 mm with outlet pump, optional)
- 4.1 Alternative drain outlet dia 20 mm with outlet pump (optional)
5. Exhaust duct dia 60 mm

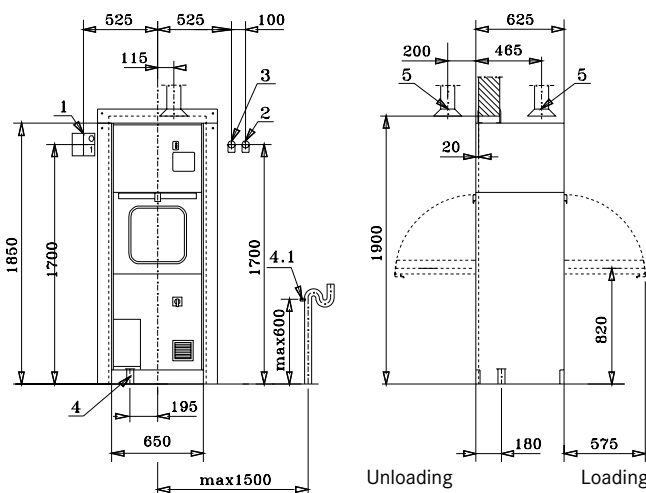
\* Not Available in South African Model

### Installation of single door machine



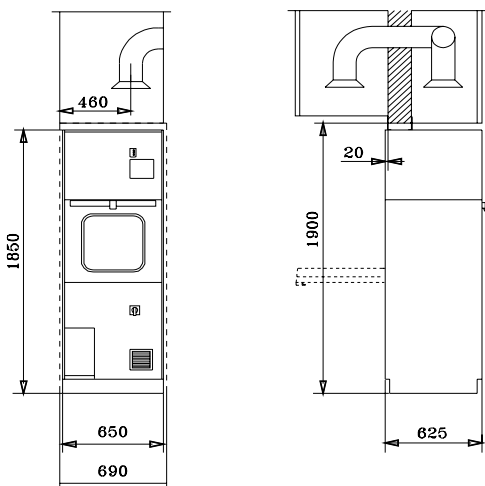
Pass through model, 1-unit

Exhaust air volume 30 litre/s



Unloading

Loading



Installation of pass-through machine, 1 unit Wall opening width: 650 mm + 40 mm, height: 1900 mm.

# DEKO 2000

|                            |   |
|----------------------------|---|
| Dental Practices           |   |
| Veterinarians              |   |
| Mortuaries                 | ✓ |
| Prisons                    | ✓ |
| Doctors<br>(Small Surgery) |   |
| Old Age Homes              |   |
| Mental Clinics             |   |
| Small Clinics              |   |
| Laboratories               | ✓ |
| Clinics                    | ✓ |
| Hospitals                  | ✓ |





IMAGE

TYPE / MODEL

PRODUCT CODE



## DEKO 2000

The DEKO 2000 is designed and constructed to meet the performance and design requirements stated in EN ISO 15883-1 Washer-disinfectors

Part 1: General requirements and in Part 2: Requirements and tests for surgical instruments, anaesthetic and respiratory equipment, hollow-ware, utensils, glassware etc., as well as, the safety requirements stated in IEC 61010-2-40: Particular requirements for washer-disinfectors used in medical, pharmaceutical, veterinary and laboratory fields.

**DEKO 2000 Base Model**

355007

## Specifications

DEKO Model 2000 instrument washer disinfector, 800 x 710 x 1970mm, manufactured from Grade 304 stainless steel with an internal washing chamber of no less than 600 x 610 x 610 mm. The unit must be fitted with adjustable feet and be freestanding. The unit must comply with ISO 15883-1 and 15883-2 specifications. The Instrument washer must have a built in circulation pump of no less than 800l per minute to compensate for any drop in incoming water pressure and an interlocking front opening door with safety lock. Contact 0861372653.

DEKO  
2000

## PLC Control

The DEKO 2000 is equipped with a Programmable Logic Control system. The user interface with a graphic display provides clear instructions and information on the operation and on-going cycle. Pass-through models have in addition also indicators at the unloading side for on-going cycle, process completed and fault.

## Reliability

The DEKO 2000 occupies its space efficiently. One unit requires only W800xD710 mm of floor space. Connections to water, electricity, drain and ventilation are provided with all necessary safety features. Regular control & maintenance of the machine is made quick and easy by the service mode of the PLC and easily accessible components. Water is taken into the chamber directly to avoid separate cleaning and disinfection of integrated water holding tanks. User and Maintenance Manuals include all relevant details and instructions as required. Any information, advice, personnel training and service calls are attended to with the utmost dedication and urgency. Availability of spares is guaranteed for the minimum of 15 years after date of shipment and the complete programme and software lodged securely with an independent body.

## Safety and comfort

The DEKO 2000's compact dimensions are based on thorough ergonomic research and practical studies. The opening height of the doors, all controls at eye level and flexible usage of the wash chamber with individually removable shelves make the DEKO 2000 simple and comfortable to work with.

## Verifying the process data

The **optional** model with a 5.7" TFT Touch Screen Operator and Display Panel can also download cycle information directly through Intranet or save data on a USB Memory Stick, i.e.: institution name, date and time, operator and machine identification, cycle number, selected cycle name, phase descriptions, washing pressure, detergent dose stage and volume (option), chamber temperature throughout the process and faults.



Standard LCD display & User Interface and the Integrated Process Verification Printer (optional).

# DEKO 2000

Washer-disinfector

## SUMMARY OF FEATURES

- Overall dim. W800xD710xH1970 mm
- Usable wash chamber dim.  
W600xD610xH610 mm
- Electricity U 400V 3N AC 50Hz (or 60Hz), max 13 kW,  
3 x 25A. Other voltages as required.
- Powerful circulation water pump, output 800L/min
- Framework, panels and wash chamber all made of stainless steel.
- Interlocking opening doors provided with springs and safety locks
- 3+1 cycle selection & start keys
- Phase indication as text
- Remaining program time indication
- Cycle complete indication as text and with a green led
- Fault indication
- Multi-level access code system. Special codes for: user,  
maintenance, authorized person
- Remaining cycle time
- Unloading end:
- In-process indication
- Cycle complete: green led
- Fault indication: red led
- Independent process verification recording system
- 4 independently removable, sliding wash shelves
- 5 rotating wash arms with removable caps facilitating easy cleaning
- Adjustable automatic detergent dosage pump
- Place for process chemical containers
- Boss entry port for test temperature sensor leads
- Ventilation connection provided with a spigot up-stand sleeve and  
condensate back-flow protection
- Filter quality monitoring and change indication system
- Load temperature protection and overtemperature cut-outs
- Sound and heat insulated
- Shockproof window(s)

## OPTIONS

- Optional Dryer
- Max. 2 extra detergent pumps
- Max. 1 adjustable rinse aid pump
- Solenoid valve, feed pump and hose for purified water
- Detergent dose volume verification (optional)
- Washing pressure registering (optional)

Models:

E = Electrically heated

X = Pass-through

L = Laboratory

K = Dryer

E.g. DEKO DEKO 2000EXLK = electr. heated pass-through laboratory  
model incl. dryer

Note. Optional integrated dryer.

Included as a standard:

- 4- level shelves
- 5 wash arms
- 1 detergent pump

## TECHNICAL DATA

| Type                                                                                                | DEKO 2000 |
|-----------------------------------------------------------------------------------------------------|-----------|
| <b>Outer dimensions mm:</b>                                                                         |           |
| Width                                                                                               | 800       |
| Depth                                                                                               | 710       |
| Height                                                                                              | 1970      |
| Weight kgs                                                                                          | 250       |
| <b>Usable chamber volume L</b>                                                                      | 220       |
| <b>Usable inner dimensions mm:</b>                                                                  |           |
| Chamber height                                                                                      | 600       |
| Chamber width                                                                                       | 600       |
| Chamber depth                                                                                       | 610       |
| Wash levels                                                                                         | 4         |
| <b>Usable height/level, mm</b>                                                                      | 95/135    |
| <b>Wash arms max.</b>                                                                               | 5         |
| <b>Basket capacity:</b>                                                                             |           |
| SPRI basket 1/2, 340x250x70 mm max.                                                                 | 16        |
| DIN 480x255x50 mm max.                                                                              | 8         |
| DIN 240x255x50 mm max.                                                                              | 16        |
| DIN 120x255x50 mm max.                                                                              | 32        |
| EURO 600x300x70 mm max.                                                                             | 8         |
| EURO 300x300x70 mm max.                                                                             | 16        |
| EURO 150x150x70 mm max.                                                                             | 32        |
| <b>Water filling volumes L/one phase:</b>                                                           |           |
| Rinse                                                                                               | 19        |
| Wash                                                                                                | 19        |
| Disinfection                                                                                        | 19        |
| <b>Electricity</b>                                                                                  |           |
| U 400V 3N AC 50/60Hz, E-models (South Africa)                                                       | 3x25A     |
| U 400V 3N AC 50/60Hz, D-models                                                                      | 3x16A     |
| U 200-240V 3PH AC 50/60Hz, E-models                                                                 | 3x35A     |
| U 200-240V 3PH AC 50/60Hz, D-models                                                                 | 3x16A     |
| <b>Capacity &amp; effects:</b>                                                                      |           |
| Total power kW, E-models                                                                            | 12,8      |
| Heating power kW, E-models                                                                          | 10 or 7,5 |
| Dryer kW                                                                                            | 6.0       |
| Circulation pump kW                                                                                 | 2.8       |
| Outlet size diameter in mm                                                                          | 50        |
| Purewater pump kW, optional                                                                         | 0.5       |
| <b>Water flow L/sec</b>                                                                             | 0,5       |
| Subject to changes without further notice. Please ask the supplier for<br>confirmation as required. |           |
| <b>Tests/Approvals:</b>                                                                             |           |
| ISO 9001                                                                                            |           |
| ISO 14001                                                                                           |           |
| ISO 13485                                                                                           |           |
| SIS TR-3:2001                                                                                       |           |
| EN ISO 15883-1, 15883-2                                                                             |           |
| IEC 61010-2-40                                                                                      |           |
| CE 0537                                                                                             |           |

### OVERALL DIMENSIONS AND MASS

Outer dimensions:

|                                  |         |
|----------------------------------|---------|
| Width $M_w$                      | 800 mm  |
| Depth $M_d$                      | 710 mm  |
| Height $M_h$                     | 1970 mm |
| Loading height above floor $L_h$ | 850 mm  |

Chamber dimensions:

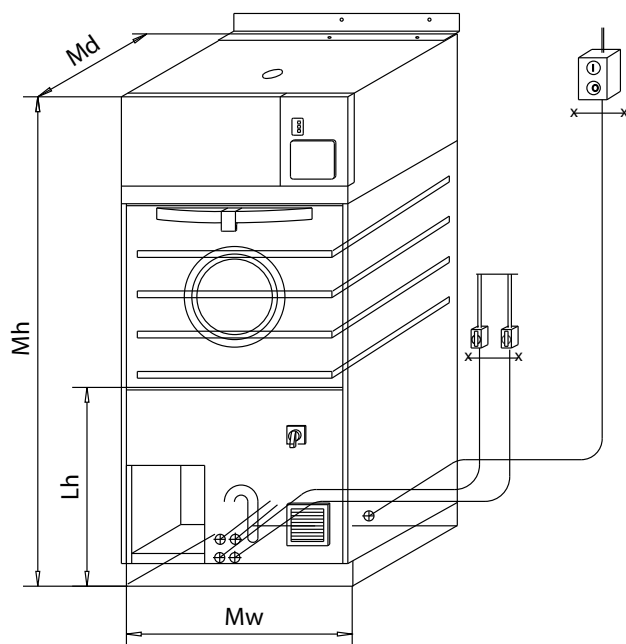
|              |                                    |
|--------------|------------------------------------|
| Width $C_w$  | 600 mm                             |
| Depth $C_d$  | 610 mm                             |
| Height $C_h$ | 610 mm                             |
| Volume       | 347 / 220 L (0.22 m <sup>3</sup> ) |

Levels:

|                    |                   |
|--------------------|-------------------|
| Lower level $L_1$  | min/max 95/135 mm |
| Middle level $L_2$ | min/max 95/135 mm |
| Middle level $L_3$ | min/max 95/135 mm |
| Upper level $L_4$  | 95 mm             |

Mass:

|                            |                          |
|----------------------------|--------------------------|
| Weight with drying unit    | 250 kg                   |
| Weight without drying unit | 230 kg                   |
| Floor loading              | 0.05 kN./cm <sup>2</sup> |

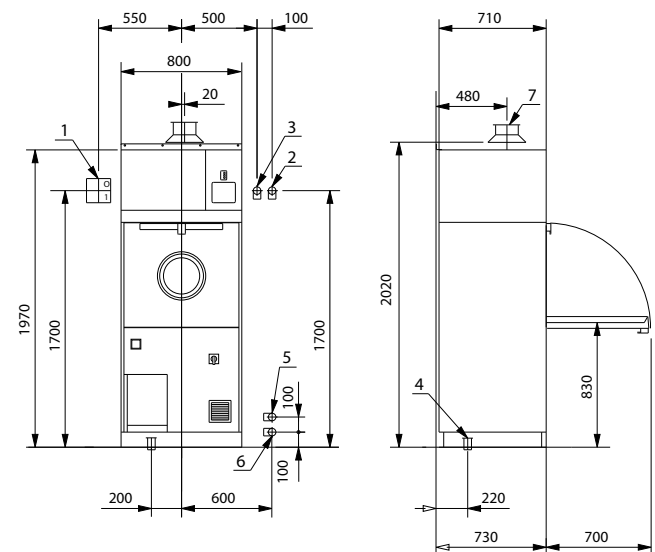


### INSTALLATION

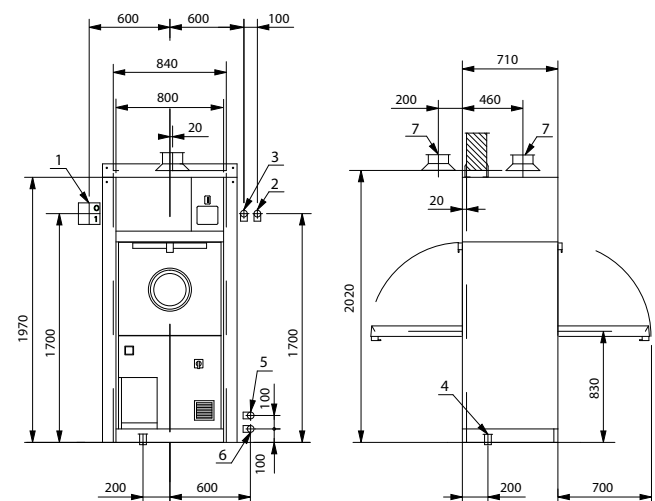
1. Circuit breaker (supplied by the buyer)
2. Cold water R1/2" (female), shut off valve (supplied by the buyer)
3. Warm water R1/2" (female), shut off valve (supplied by the buyer)
4. Drain outlet NS dia 50 mm
5. \*Steam connection R1/2" (male)
6. \*Condensate connection R1/2" (male)
7. Exhaust duct dia 90 mm

\* Not Available in South African Model

Installation of single door machine



Pass through model, 1-unit



Wall opening for pass-through model, side by side installation

Width of wall opening is  $n \times 800 \text{ mm} + 40 \text{ mm}$

e.g. three machines  $3 \times 800 \text{ mm} + 40 \text{ mm} = 2440 \text{ mm}$

Please check the opening requirements by the supplier.

# DEKO 2200

|                            |   |
|----------------------------|---|
| Dental Practices           |   |
| Veterinarians              |   |
| Mortuaries                 |   |
| Prisons                    |   |
| Doctors<br>(Small Surgery) |   |
| Old Age Homes              |   |
| Mental Clinics             |   |
| Small Clinics              |   |
| Laboratories               | ✓ |
| Clinics                    |   |
| Hospitals                  | ✓ |





## DEKO 2200

DEKO 2200 Drying cabinet is designed especially for drying surgical instruments, anaesthetic hoses & equipment, as well as other reusable items used in patient health care.

It is dimensioned particularly for use together with the DEKO-2000 -series washer- disinfectors. The chamber can accommodate two full loads (4+4 shelves) from the washers. The sound and heat insulated double walls of the cabinet are made of AISI304 stainless steel. DEKO 2200 is available as a single door or pass-through model, left or right-hinged.

### DEKO 2200 Dryer

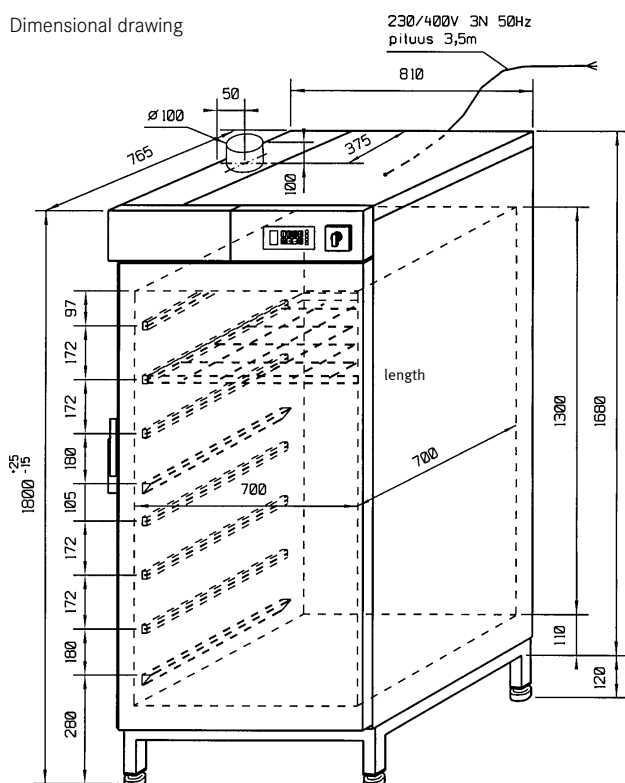
355003

## Specifications

DEKO Model 2200 Dryer cabinet, 765 x 810 x 1800mm, manufactured from Grade 304 stainless steel with an internal drying chamber not less than 700 x 700 x 1300 mm. Dryer must be manufactured with a minimum of 8 tiers to accommodate instrument trays and An-tubes. The Dryer is to be manufactured with an integrated air filter. The unit to be manufactured with adjustable cycle time of 1- 99 minutes and a continuous cycle. The unit must have a minimum of five programs and a variable temperature setting of up to 90 degrees Celsius with a cycle time indicator. Contact 0861372653

DEKO  
2200

Dimensional drawing



## TECHNICAL DATA

### Models

- 372200 DC-2200 single door - right or left-hinged
- 372220 DC-2200 pass-through - right or left-hinged

### Standard equipment

- 3 removable wire shelves
- holder shelf for 36 long AN-hoses
- 2 hose cassettes for 6+6 hoses
- rails for 8 shelves
- ventilation connection sleeve
- program start buttons
- digital thermometer
- phase indication
- air filter
- adjustable feet

### Microprocessor control

- three programs with varying duration
- five program stations
- temp.adjustment up to +90 0C
- time regulation 1-99 mins or continuous
- remaining time indication

### Connections

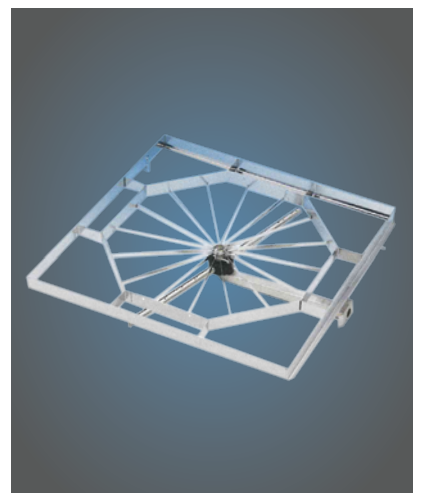
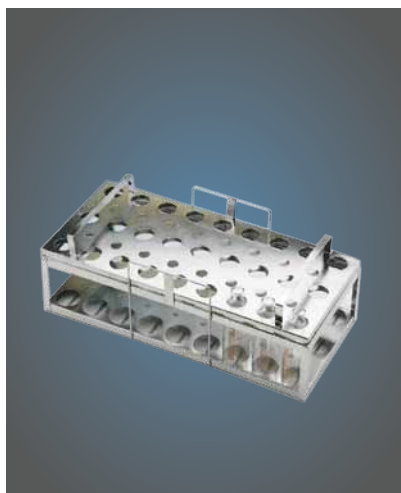
- electricity 400V, 3N, 16A
- power 5,6 kW
- heating effect 5,2 kW
- air discharge, dia 100 mm
- discharge volume 28L/sec
- weight 165 kgs

### Accessories

- additional wire shelf, code 374010



## DEKO ACCESSORIES





|                                           |                           | DEKO<br>25 | DEKO<br>260 | DEKO<br>2000 | DEKO<br>2200 | DEKO<br>190 |
|-------------------------------------------|---------------------------|------------|-------------|--------------|--------------|-------------|
| INSTRUMENTS                               |                           |            |             |              |              |             |
| Sterilization basket                      | 585 x 395 x 195mm         |            |             | ✓            |              |             |
| Divider                                   |                           |            |             | ✓            |              |             |
| Sterilization basket                      | 585 x 395 x 100mm         |            |             | ✓            |              |             |
| Sterilization Lid                         |                           |            |             | ✓            |              |             |
| Utensil Basket with lid                   | 340 X 250 X 200 mm        | ✓          |             | ✓            |              | ✓           |
| Instrument Wire Basket 1/1                | 450 X 340 X 70 mm         |            | ✓           | ✓            |              | ✓           |
| Instrument Basket Lid 1/1                 | 450 X 340 mm              |            | ✓           | ✓            |              | ✓           |
| Instrument Wire Basket 1/2                | 340 X 250 X 70 mm         | ✓          | ✓           | ✓            |              | ✓           |
| Instrument Basket Lid 1/2                 | 340 X 250 mm              | ✓          | ✓           | ✓            |              | ✓           |
| Instrument Wire Basket 1/4                | 250 X 170 X 70 mm         | ✓          | ✓           | ✓            |              | ✓           |
| Instrument Basket Lid 1/4                 | 250 X 170 mm              | ✓          | ✓           | ✓            |              | ✓           |
| Inner tray 1/1                            | 430 X 320 X 50 mm         |            | ✓           | ✓            |              |             |
| Inner tray Lid 1/1                        | 430 X 320 mm              |            | ✓           | ✓            |              |             |
| Inner tray 1/2                            | 320 X 230 X 50 mm         | ✓          | ✓           | ✓            |              |             |
| Inner tray Lid 1/2                        | 320 X 230 mm              | ✓          | ✓           | ✓            |              |             |
| Inner tray 1/4                            | 230 X 150 X 50 mm         | ✓          | ✓           | ✓            |              |             |
| Inner tray Lid 1/4                        | 230 X 150 mm              | ✓          | ✓           | ✓            |              |             |
| DEKO 1/2 basket                           |                           |            | ✓           | ✓            |              |             |
| Divider grid                              |                           |            | ✓           | ✓            |              |             |
| Utensil Basket with lid                   | 340 X 250 X 200 mm        |            | ✓           | ✓            |              |             |
| Tube Washing Insert                       | Suction Tubes             |            | ✓           | ✓            |              |             |
| Anaesthesia Equipment Rack                |                           |            | ✓           | ✓            |              |             |
| Sigmoid scopes Washing Rack               |                           |            | ✓           | ✓            |              |             |
| Bird Hose Washing Insert                  |                           |            | ✓           | ✓            |              |             |
| Rack for anaesthesia equipment            |                           |            | ✓           | ✓            |              |             |
| Rigid Scopes Washing Rack                 |                           |            | ✓           | ✓            |              |             |
| Shoe Rack                                 | (DEKO 190 4 pairs)7 Pairs |            | ✓           | ✓            |              | ✓           |
| Kidney Bowls Rack                         | 6 Bowls                   | ✓          | ✓           | ✓            |              | ✓           |
| Urine Bottle Washing Rack                 | 4 Extra bottles           |            |             |              |              | ✓           |
| Suction Bottle Shelf                      | 1 Bottles                 |            |             |              |              | ✓           |
| Suction Bottle Tipping Shelf              | 2 Bottles with lids       |            |             |              |              | ✓           |
| Hose Washing Rack                         | 4 mm Tubes                |            |             |              |              | ✓           |
| Insert for Oras Shower handles and hoses. | 4 handles and hoses.      |            |             |              |              | ✓           |
| Spray Tube Rack                           |                           | ✓          |             |              |              |             |
| Spray tube rack incl. 381212/213          |                           | ✓          |             |              |              |             |
| Tray support                              | 370x370 mm                | ✓          |             |              |              |             |
| Mesh Basket Lid - Wire                    | 230 X 150 mm              | ✓          |             |              |              |             |
| Wire basket                               | 250x100x70 mm             | ✓          |             |              |              |             |
| Basket support                            |                           | ✓          |             |              |              |             |
| Sector wire basket                        | 135mm high                |            | ✓           | ✓            |              |             |
| Lid                                       |                           |            | ✓           | ✓            |              |             |
| Sector wire basket H 210 mm               | 210mm High                |            | ✓           | ✓            |              |             |
| Divider grid H 50 mm                      |                           |            | ✓           | ✓            |              |             |
| Divider grid H 90 mm                      |                           |            | ✓           | ✓            |              |             |
| Divider grid H 125 mm                     |                           |            | ✓           | ✓            |              |             |
| Divider grid H 180 mm                     |                           |            | ✓           | ✓            |              |             |
| Pegged Rack                               |                           | ✓          | ✓           | ✓            |              |             |
| Pegged Rack H = 150                       | 150mm high                |            | ✓           | ✓            |              | ✓           |

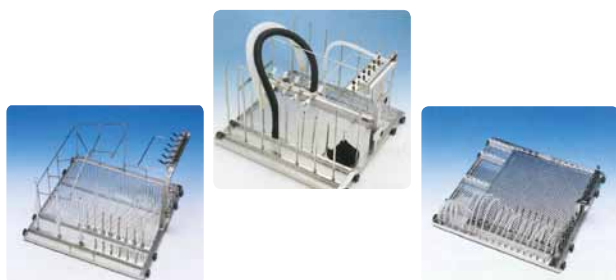
## DEKO Accessories

DEKO  
ACCESSORIES

|                                                         |                      | DEKO<br>25 | DEKO<br>260 | DEKO<br>2000 | DEKO<br>2200 | DEKO<br>190 |
|---------------------------------------------------------|----------------------|------------|-------------|--------------|--------------|-------------|
| <b>LABORATORY</b>                                       |                      |            |             |              |              |             |
| Pegged Rack H = 150                                     | 150mm high           |            | ✓           | ✓            |              | ✓           |
| Pegged Rack H = 250                                     | 250mm high           |            | ✓           | ✓            |              |             |
| Pressure lid                                            | 520mm dia            |            | ✓           | ✓            |              |             |
| Microscope slide rack                                   |                      |            | ✓           | ✓            |              |             |
| Petri Dish rack                                         |                      | ✓          | ✓           | ✓            |              |             |
| Washing Carriage for pipettes                           |                      |            | ✓           | ✓            |              |             |
| Washing rack for beakers                                |                      |            | ✓           | ✓            |              |             |
| Washing rack for graduated flasks                       |                      |            | ✓           | ✓            |              |             |
| Lid 1/1 for 381566                                      |                      |            | ✓           | ✓            |              |             |
| Lid 1/2 for 381566                                      |                      |            | ✓           | ✓            |              |             |
| Support star for bottles, dia. 8 mm tube                |                      |            | ✓           | ✓            |              |             |
| Support star for bottles, dia. 6 mm tube                |                      |            | ✓           | ✓            |              |             |
| Height adjustment spring, dia. 8 mm tube                |                      |            | ✓           | ✓            |              |             |
| Height adjustment spring, dia. 6 mm tube                |                      |            | ✓           | ✓            |              |             |
| Bottle holder, dia. 6 or 8 mm tube                      |                      |            | ✓           | ✓            |              |             |
| Tension key for spray tubes                             |                      |            | ✓           | ✓            |              |             |
| Fine mesh wire base basket                              | 370x370x50 mm        | ✓          |             |              |              |             |
| Lid                                                     | 380x380 mm           | ✓          |             |              |              |             |
| Half circle wire basket incl. a lid and separation grid | Dia 375 x 140mm high | ✓          |             |              |              |             |
| Laboratory base shelf                                   |                      | ✓          |             |              |              |             |
| <b>DENTAL EQUIPMENT</b>                                 |                      |            |             |              |              |             |
| Instr.basket incl.end plates                            | 340 X 250 X 70 mm    |            | ✓           | ✓            |              |             |
| Instrument Basket Lid 1/2                               | 340 X 250 mm         |            | ✓           | ✓            |              |             |
| Rack for instr.baskets                                  |                      |            | ✓           | ✓            |              |             |
| Mirror compartment                                      |                      | ✓          | ✓           | ✓            |              |             |
| Rack for saliva & suction tubes                         |                      |            | ✓           | ✓            |              |             |
| Dental Tray Rack                                        |                      | ✓          | ✓           | ✓            |              |             |
| Fine mesh box                                           | 90x90x40 mm          | ✓          | ✓           | ✓            |              |             |
| Tray rack for 9 trays                                   |                      | ✓          |             |              |              |             |
| Microscope Slide Rack                                   |                      | ✓          |             |              |              |             |
| Rack for hoses                                          |                      |            | ✓           | ✓            |              |             |
| <b>BOTTLES</b>                                          |                      |            |             |              |              |             |
| Bottle compartment                                      | 100g bottle          |            | ✓           | ✓            |              |             |
| Lid                                                     |                      |            | ✓           | ✓            |              |             |
| Bottle compartment                                      | 250g bottle          |            | ✓           | ✓            |              |             |
| Lid                                                     |                      |            | ✓           | ✓            |              |             |
| Bottle compartment                                      | 500g bottle          |            | ✓           | ✓            |              |             |
| Lid                                                     |                      |            | ✓           | ✓            |              |             |
| Bottle washing rack                                     | 100g bottle          |            | ✓           | ✓            |              |             |
| Bottle washing rack                                     | 250g bottle          |            | ✓           | ✓            |              |             |
| Bottle washing rack                                     | 500g bottle          |            | ✓           | ✓            |              |             |
| Bottle washing rack custom made                         |                      |            | ✓           | ✓            |              |             |
| <b>DRYER</b>                                            |                      |            |             |              |              |             |
| Wire Shelf                                              |                      |            |             |              | ✓            |             |
| Holder Shelf for Hoses                                  | 36 Anaesthetic hoses |            |             |              | ✓            |             |
| Anaesthetic Hose Cassette                               | 6 Hoses              |            |             |              | ✓            |             |
| <b>EXTRA'S</b>                                          |                      |            |             |              |              |             |
| Base Cabinet                                            |                      | ✓          |             |              |              |             |
| Base Support with shelf                                 |                      | ✓          |             |              |              |             |

| IMAGE | TYPE / MODEL | PRODUCT CODE |
|-------|--------------|--------------|
|-------|--------------|--------------|

### Accessories Rack



DEKO has a various special carts for the instrument washers. The rack for anaesthesia equipment is the ideal accessory to wash anaesthesia equipment and DEKO 2000 rack and be used in the stand alone dryer by simply sliding it out of the DEKO instrument washer and sliding it in to the dryer. All the racks can also be used in the DEKO instrument washers during the drying cycle should the DEKO machine be fitted with an integrated dryer

|                                                                        |        |
|------------------------------------------------------------------------|--------|
| <b>Rack for anaesthesia equipment for machines</b> (including a dryer) | 381314 |
| <b>Rack for anaesthesia equipment</b>                                  | 381310 |
| <b>Rack for anaesthesia equipment</b>                                  | 381340 |

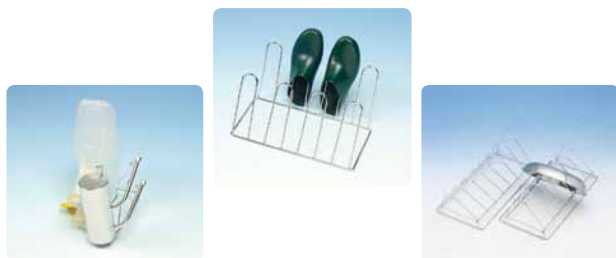
### Accessories Shelves



DEKO also have spare shelves available should there be a requirement for an additional shelf in the DEKO instrument washer. (Where applicable addition shelves can be fitted) DEKO also have special shelves for laboratory requirements. The laboratories shelves are ideally suited for for sector baskets with an integrated dryer.

|                                                                    |        |
|--------------------------------------------------------------------|--------|
| <b>Middle shelf for hospital instruments</b> (includes washer arm) | 374073 |
| <b>Middle shelf for laboratory use</b> (includes washer arm)       | 374078 |
| <b>Sector basket</b> (h=135)                                       | 381500 |
| <b>Lid</b>                                                         | 381501 |
| <b>Sector basket</b> (h=210)                                       | 381510 |
| <b>Divider</b> (h=50)                                              | 381502 |
| <b>Divider</b> (h=90)                                              | 381503 |
| <b>Divider</b> (h=125)                                             | 381504 |
| <b>Divider</b> (h=180)                                             | 381505 |

### Accessories DEKO 190



The DEKO 190 bedpan washer disinfecter has a fold down shelf that allows the washing of various other products like slop buckets, suction bottle, measuring jugs and even kidney dishes. There are various add on accessories and racks for the DEKO 190. Inserts are available to increase the washing capacity of urine bottles allowing the washing of 4 additional urine bottles. Also available are racks for shoes and kidney bowls.

|                                   |        |
|-----------------------------------|--------|
| <b>Insert for 4 urine bottles</b> | 381680 |
| <b>Shoe rack, 4 pairs</b>         | 381450 |
| <b>Kidney bowl rack</b>           | 381685 |

### Accessories Bottle Rack



DEKO instrument washers are also the Ideal partner in maternity wards and laboratories with a wide range of bottle washing racks. The bottle racks are purposely designed to suite feeding bottles of 100g, 250g and even 500g. Also available is washing racks for graduated flasks, measuring beakers and pipettes.

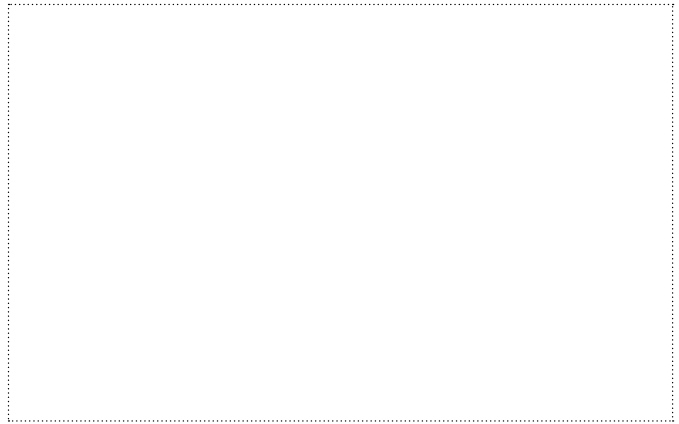
|                                          |        |
|------------------------------------------|--------|
| <b>Bottle compartment 150 g</b>          | 381701 |
| <b>Lid 150 g</b>                         | 381702 |
| <b>Bottle compartment 250 g</b>          | 381711 |
| <b>Lid 250 g</b>                         | 381712 |
| <b>Bottle compartment 500 g</b>          | 381721 |
| <b>Lid 500 g</b>                         | 381722 |
| <b>Washing rack for graduated flasks</b> | 381555 |
| <b>Bottle washing rack, custom made</b>  | 381603 |

FRANKE WASHROOM SYSTEMS (PTY) LTD  
CALL CENTRE  
TEL: 0861 372 653  
Fax (+27-31) 450 6303  
e-mail: callcentre.fsa@franke.com  
Website: www.DEKOrange.com  
www.franke.co.za

DURBAN  
1194 South Coast Road,  
Mobeni, Durban, 4092  
South Africa.  
TEL: (+27-31) 450 6300  
FAX: (+27-31) 450 6303  
e-mail: enquiry.fsa@franke.com

GAUTENG  
77 Roan Crescent,  
Sage Corporate Park North,  
Old Johannesburg Road,  
Midrand, 1682  
South Africa

CAPE TOWN  
Unit 29, Gold Street,  
Northgate Business Park, Northgate Estate,  
Cape Town, 7405  
South Africa



#### DISCLAIMER

The information and dates supplied in this brochure are based on the information believed to be reliable, however are not binding and inaccuracies may occur. Franke reserves the right to change Specification and design at any time without notice.

© 2012 by Franke Washroom Systems (Pty) Ltd. All rights reserved under the Copyright Act of 1987 with the amendments. Reproduction of any of the content, full or partial, is allowed only with prior written approval of Franke Washroom Systems (Pty) Ltd. No reasonable requests will be refused provided the conditions as laid out are met.



WASHROOM  
SYSTEMS