



HOSPITAL, MORTUARY & INDUSTRIAL PRODUCTS

Product Guide 2013

WASHROOM
SYSTEMS

FRANKE



Index

Hospital Products	1 - 20
EC Combination Bedpan & Wash-up Sink	3
EL Bedpan Sluice Sink	4
Fixing Options For EC & EL Units	5
BR Bedpan & Bottle Rack	6
CH Slop Hopper	7
CHBC Slop Hopper Basin Combination	8
DSBC Drip Sink Basin Combination	9
LDS Drip Sink / Cleaner Sink	10
DSG Drip Sink / Cleaner Sink	11
SSW Hospital Surgeon Scrub Up Unit	12
SSF Hospital Surgeon Scrub Up Unit	13
SMS Surgeon Mini Scrub Up Unit	14
PP Plaster Of Paris Preparation	15
Combi Ward Basin	16
CBDT Baby Bath (Inset Type)	17
CB Baby Bath	18
Fixing Options For Plaster Of Paris Sinks And Baby Baths	19
Stainless Steel Bath	20



Index

Mortuary Products	21 - 24
MTS Post Mortem Table	23
MT Post Mortem Table	23
Instrument Cabinet	24
Writing Desk	24
Industrial Products	25 - 38
S1 Stainless Steel Catering Sinks	27
S2 Stainless Steel Catering Sinks	28
P1 Stainless Steel Pot Sinks	29
P2 Stainless Steel Pot Sinks	30
S1P1 Double Bowl Preparation Sinks	31
Fixing Options For S & P Type Sinks	32
Stainless Steel Tables / Worktops	33
Stainless Steel Wall Benches	34
Fixing Options For Sinks, Tables and Wall Benches	35
Undershelves For Sinks and Tables	36
Fastrack Modular Shelving	37
Z-Series Shelving	38
Other Franke Products	39 - 44





HOSPITAL PRODUCTS

SLOP HOPPERS, DRIP SINKS, BOTTLE RACKS, BED PAN WASH-UP, SURGEON SCRUB UP UNITS, PLASTER OF PARIS SINKS, BATHS

Franke is the leading supplier of sanitaryware products to hospitals, clinics and mortuaries, environments where hygiene is of the highest priority.

Franke is certified to ISO9001: 2008 quality management standards.

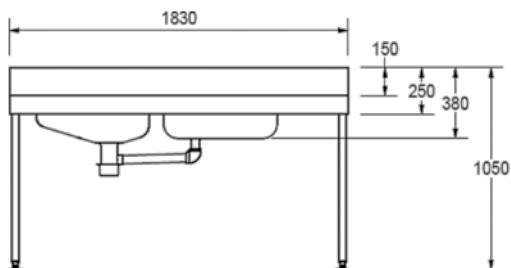
Our designs and construction ensure that our products meet the demands of safety, hygiene and quality.

Uncompromising when it comes to quality, innovation and design.

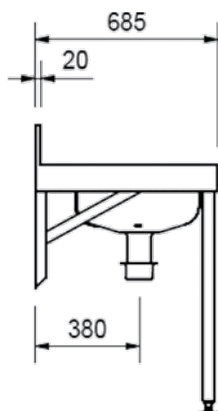
Hospital Products



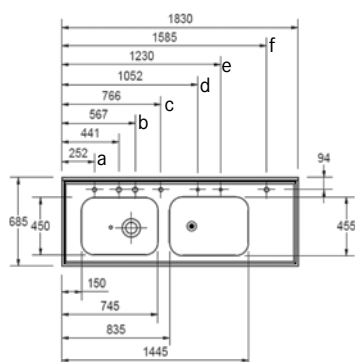
LEFT HAND BOWL
FITTINGS AND FIXING OPTIONAL



FRONT VIEW



SIDE VIEW



TOP VIEW

- a) 15mm Cold Water
- b) 35mm Cold Water
- c) 15mm Cold Water
- d) 15mm Hot/Cold Water
- e) 15mm Cold Water
- f) 15mm Hot/Cold Water

EC Combination Bedpan & Wash-Up Sink

Specifications

WITH FLUSH VALVE

Franke Model EC Combination Bedpan and Wash-Up Sink manufactured from grade 304 (18/10 stainless steel 1.6mm (draining board) and 1, 2mm thick (bowls). Unit with a 150mm high integral splash back to the rear and 15mm deep hospital bead 100mm apron to front and sides. The unit is fitted with two pressed seamless bowls with the sluice bowl having an integral flushing rim and a 38mm diameter inlet pipe for the flush valve. The waste outlet on sluice bowl is a 110mm and the rinse bowl size 610x460x230mm deep with a 40mm waste discharging into sluice bowl. The underside sprayed with vermin proof bitumastic sound deadening and has a galvanised mild steel backing sheet. Unit supplied complete with factory fitted Cobra FM 1.00 flush valve, 35mm water supply through 50mm sleeve on unit, CP171/041 pillar mixer with over-arm swivel spout, CP297 pillar mixer with retractable hand spray, 15mm bedpan spray nozzle, 15mm bottle spray nozzle (both nozzles activated by two 15mm quarter turn elbow action valves).

Please refer to fixing table for fixing options.

WITH HIGH LEVEL CISTERN

Franke Model EC Combination Bedpan and Wash-Up Sink manufactured from grade 304 (18/10 stainless steel 1.6mm (draining board) and 1,2mm thick (bowls). Unit with a 150mm high integral splash back to the rear and 15mm deep hospital bead 100mm apron to front and sides. The unit is fitted with two pressed seamless bowls with the sluice bowl having an integral flushing rim and a 38mm diameter inlet pipe for the flush valve. The waste outlet on sluice bowl is a 110mm and the rinse bowl size 610x460x230mm deep with a 40mm waste discharging into sluice bowl. The underside sprayed with vermin proof bitumastic sound deadening and has a galvanised mild steel backing sheet. Unit supplied complete with 11 litres stainless steel high level cistern fitted with Supa Flush Valve and pull chain, 41mm diameter stainless steel flush pipe and 41 chrome plated coupling which is reduced on one end to fit the 38mm connection on the unit.

Please refer to fixing table for fixing options.

Features

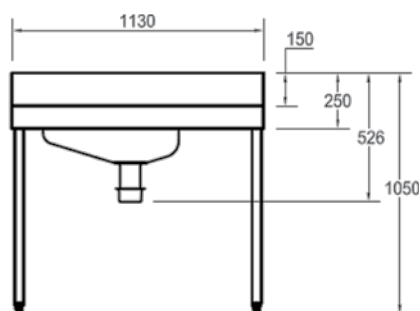
- Grade 304 (18/10) Stainless Steel 1.6mm gauge on drainer and 1,2mm gauge on bowls
- Hygienic and durable
- Pressed seamless bowls designed for the highest level of hygiene and durability
- Unit is pre-plumbed at factory and can be supplied complete with fittings
- 57 Litres pressed rinse bowl
- Sluice bowl with built in Flush rim mechanism with 110mm outlet
- Alternative fixing methods (Please refer to fixing table)

Product code

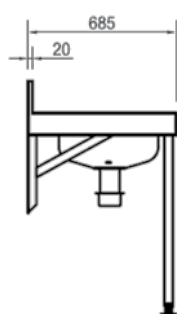
PRODUCT CODE	MODEL	DIMENSIONS LXDHXH	BOWL POSITION	FLUSH SYSTEM
350050	EC 6	1830x685 mm	Left Hand	Flush Valve
350052	EC 6	1830x685 mm	Right Hand	Flush Valve
350054	EC 6	1830x685 mm	Right Hand	High Level Cistern
350056	EC 6	1830x685 mm	Left Hand	High Level Cistern
350100	EC 7	2135x685 mm	Left Hand	Flush Valve
350102	EC 7	2135x685 mm	Right Hand	Flush Valve
350104	EC 7	2135x685 mm	Right Hand	High Level Cistern
350106	EC 7	2135x685 mm	Left Hand	High Level Cistern
350150	EC 8	2440x685 mm	Left Hand	Flush Valve
350152	EC 8	2440x685 mm	Right Hand	Flush Valve
350154	EC 8	2440x685 mm	Right Hand	High Level Cistern
350156	EC 8	2440x685 mm	Left Hand	High Level Cistern



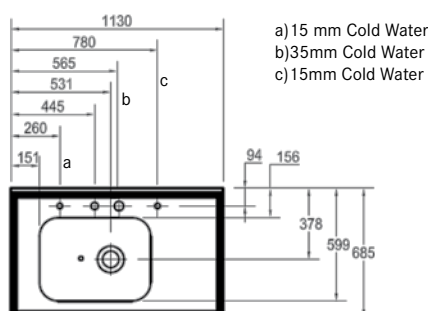
RIGHT HAND BOWL
FITTINGS & FIXTURES OPTIONAL



LEFT HAND BOWL FRONT VIEW



SIDE VIEW



TOP VIEW

EL Bedpan Sluice Sink

Specifications

WITH FLUSH VALVE

Franke Model EL Sluice Sink manufactured from grade 304 (18/10) stainless steel 1.6mm (draining board) and 1,2mm thick (bowls). Unit with a 150mm high integral splash back to the rear and 15mm deep hospital bead 100mm apron to front and sides. The unit is fitted with a pressed seamless bowls sluice bowl having an integral flushing rim and a 38mm diameter inlet pipe for the flush valve and the waste outlet is 110mm. The underside sprayed with vermin proof bitumastic sound deadening and has a galvanised mild steel backing sheet. Unit supplied complete with factory fitted Cobra FMI.00 flush valve, 35mm water supply through 50mm sleeve on unit, 15mm bedpan spray nozzle, 15mm bottle spray nozzle (both nozzles activated by two 15mm quarter turn elbow action valves).

Please refer to fixing table for fixing options.

WITH HIGH LEVEL CISTERN

Franke Model EL Sluice Sink manufactured from grade 304 (18/10) stainless steel 1.6mm (draining board) and 1,2mm thick (bowls). Unit with a 150mm high integral splash back to the rear and 15mm deep hospital bead 100mm apron to front and sides. The unit is fitted with a pressed seamless bowls sluice bowl having an integral flushing rim and a 38mm diameter inlet pipe for the flush valve and the waste outlet is 110mm. The underside sprayed with vermin proof bitumastic sound deadening and has a galvanised mild steel backing sheet. Unit supplied complete with 11 litres stainless steel high level cistern fitted with Supa Flush Valve and pull chain, 41mm diameter stainless steel flush pipe and 41mm chrome plated coupling which is reduced on one end to fit the 38mm connection on the unit.

Please refer to fixing table for fixing options.

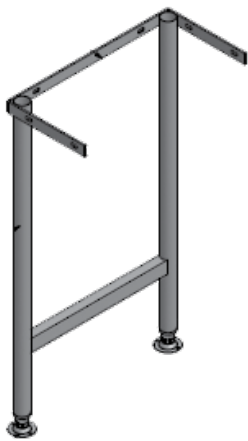
Features

- Grade 304 (18/10) Stainless Steel 1.6mm gauge on drainer and 1,2mm gauge on bowl
- Hygienic and durable
- Pressed seamless bowl designed for the highest level of hygiene and durability
- Unit is pre-plumbed at factory and can be supplied complete with fittings
- Sluice bowl with built in Flush rim mechanism with 110mm outlet
- Alternative fixing methods (Please refer to fixing table)

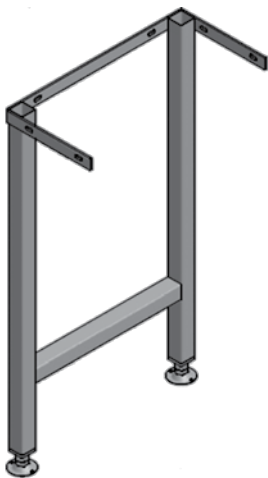
Product code

PRODUCT CODE	MODEL	DIMENSIONS LXDHXH	BOWL POSITION	FLUSH SYSTEM
350300	EL	1130x685 mm	left hand	flush valve
350302	EL	1130x685 mm	right hand	flush valve
350304	EL	1130x685 mm	right hand	high level cistern
350306	EL	1130x685 mm	left hand	high level cistern

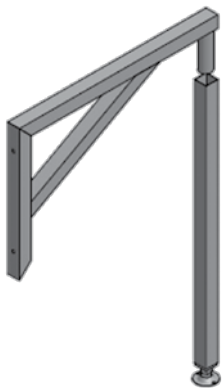
Hospital Products



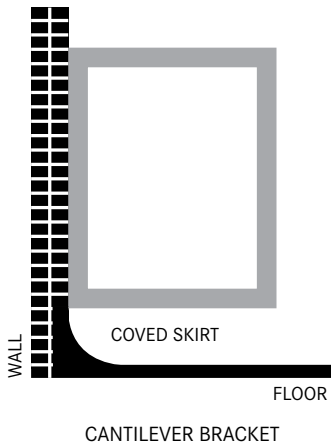
40mm DIAMETER ROUND LEG (PAIR)



40 x 40mm SQUARE LEG (PAIR)



GALLOWES BRACKET WITH REMOVABLE FRONT LEG



CANTILEVER BRACKET

Fixing Options For EC & EL Units

Specifications

STAINLESS STEEL ROUND LEGS

Round Legs manufactured from grade 304(18/10) stainless steel 41mm diameter x 1,2mm thick round tubing. Legs to be detachable and fitted with chrome plated adjustable flanged foot pieces.

STAINLESS STEEL SQUARE LEGS

Square Legs manufactured from grade 304(18/10) stainless steel 40x40mm x 1,2mm thick square tubing. Legs to be detachable and fitted with chrome plated adjustable flanged foot pieces.

STAINLESS STEEL GALLOWES BRACKETS WITH FRONT LEG

Gallows Brackets with Front Legs manufactured from grade 304(18/10) stainless steel 40x40mm x 1,2mm thick square tubing. The front leg is detachable and is fitted with chrome plated adjustable flanged foot pieces.
*These brackets are used in areas where the floors have coved skirting.

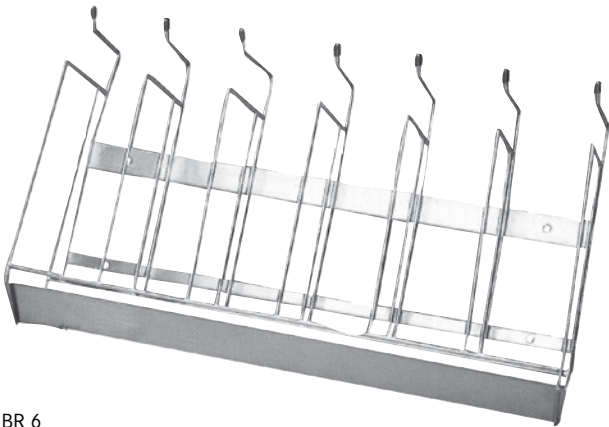
STAINLESS STEEL CANTILEVER BRACKETS

Cantilever Brackets manufactured from grade 304(18/10) stainless steel 40x40mm x 1,2mm thick square tubing.
*These brackets are used in areas where the floors have coved skirting and the design makes cleaning under the unit very easy.

Product code

PRODUCT CODE	METHOD	QTY REQUIRED	COMMENTS
300372	40mm diameter round legs	2 pairs	units 2400 mm and longer require additional legs
300373	40 x 40mm square legs	2 pairs	units 2400 mm and longer require additional legs
300370	40 x 40mm square gallows bracket	1 pair	
355100	40 x 40mm square gallows bracket with detachable front leg	1 pair	units 2400 mm and longer require additional bracket and leg
355102	40 x 40mm cantilever bracket	1 pair	units 2400 mm and longer require additional brackets

BR Bedpan & Bottle Rack



BR 6

Specifications

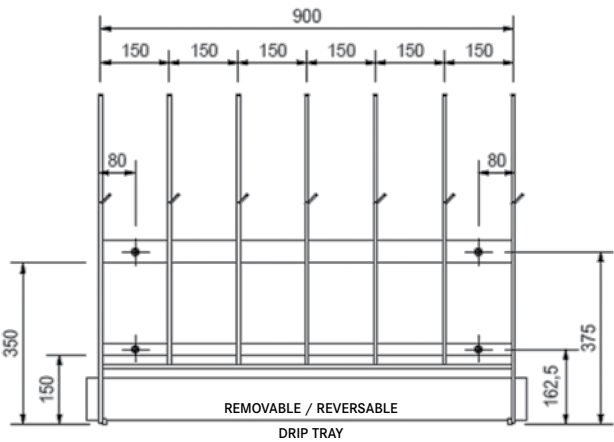
Franke model BR Bedpan and Bottle Rack, Length...mm (Please Specify), designed to hold plastic and stainless steel bedpans and bottles, manufactured from grade 304 (18/10) stainless steel 8mm diameter round bars and stainless steel flat bar mounting brackets. Unit complete with stainless steel drip tray which can be removed for cleaning and the ends of the bottle rods are fitted with rubber grommets. Unit fixed to wall with 4 off anchor bolts (bolts specified elsewhere).

Features

- Manufactured from Grade 304 (18/10) Stainless Steel
- Hygienic & durable
- Available in three standard sizes
- Rubber grommets fitted to ends of bottle rods to prevent scratching of bottles
- Removable drip tray

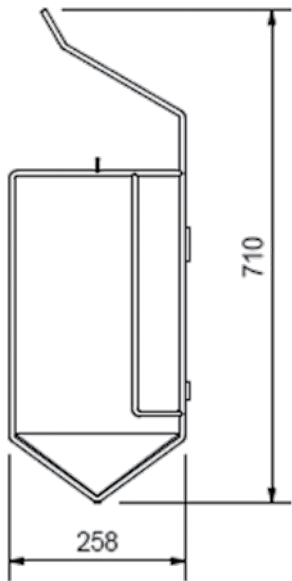
Product code

PRODUCT CODE	MODEL NO.	DIMENSIONS LXHXD	NO. OF BEDPANS	NO. OF URINAL BOTTLES
350600	BR2	305x560x260mm	2	3
350650	BR4	610x560x260mm	4	5
350700	BR6	915x560x260mm	6	7



BR 6

FRONT VIEW

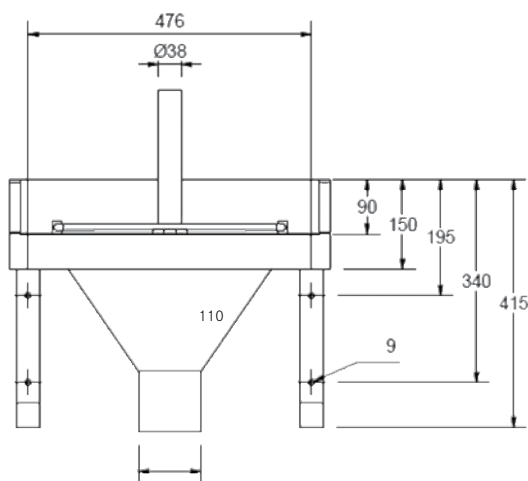


SIDE VIEW

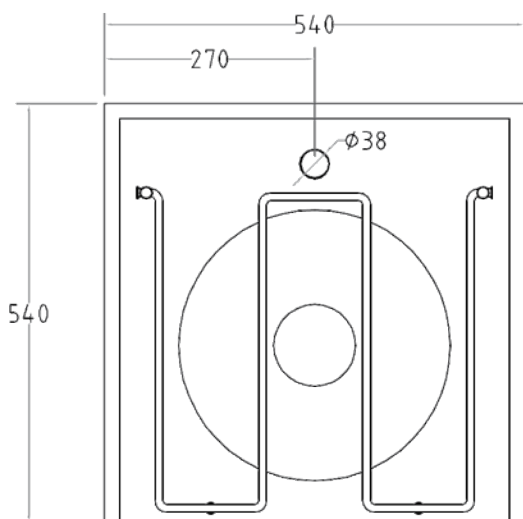
Hospital Products



FLUSH VALVE & PAN CONNECTOR NOT INCLUDED



FRONT VIEW



TOP VIEW

CH Slop Hopper

Specifications

SPECIFICATIONS MODEL CH:

Franke model CH Slop Hopper 540x540 manufactured from grade 304 (18/10) stainless steel 1.2mm thick with a 100mm high integral splash back to the rear and both sides. The cone has an integral flushing rim and a 110mm waste outlet for pan connector, the inlet is fitted with a 38x250mm long vertical flush pipe for a standard flush valve. Unit fitted with a hinged bucket grid manufactured from 10mm diameter grade 304 (18/10) stainless steel round bar complete with two 40x40mm square stainless steel wall mounting galleys brackets. Unit fixed to wall 600mm from the top of the front apron to the finish floor level with 4 off anchor bolts (bolts specified elsewhere).

STANDARD FLUSHING METHOD USING FLUSH VALVE METHODS:

Cobra model FM 1.000 - 35mm water supply flush valve or, Cobra FJ 2.000 - 20mm water supply flush valve and a . . . Cobra FJT 1.2 straight flush pipe connected to CP on brass adaptor (Flush valves specified elsewhere)

ALTERNATIVE FLUSHING METHOD USING HIGH LEVEL CISTERN:

Slop Hopper can be adapted to flush using 11 litres stainless steel high level cistern fitted with Supa Flush Valve and pull chain, 41mm diameter stainless steel flush pipe and 41mm chrome plated coupling which is reduced on one end to fit the 38mm connection on the unit.

Features

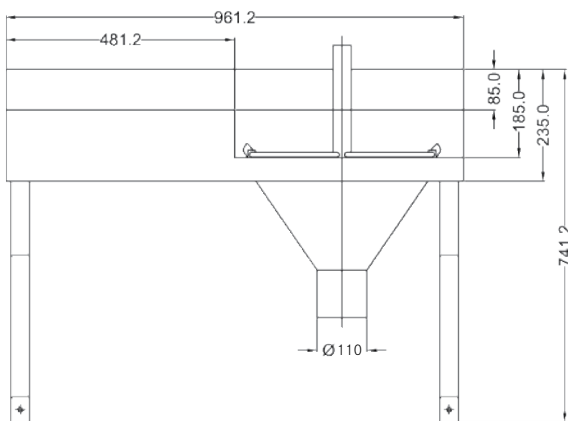
- Grade 304 (18/10) Stainless Steel 1.2mm gauge
- Hygienic and durable
- Hinged bucket grid
- Outlet to suit standard 110mm PVC or cast iron "P"-Trap

Product code

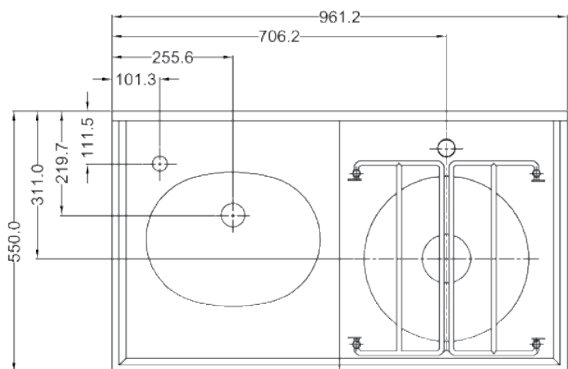
351350



TAP & WASTE FITTING NOT INCLUDED



FRONT VIEW



TOP VIEW

CHBC Slop Hopper Basin Combination

Specifications

Franke model CHBC Slop Hopper Wash hand basin combo unit 965x550mm manufacture from grade 304 (18/10) stainless steel 1,2mm thick with a 100mm high integral splash back to the rear and both sides. The cone has an integral flushing rim and a 110mm waste outlet for pan connector, the inlet is fitted with a 38x250mm long vertical flush pipe for a standard flush valve. Unit fitted with a hinged bucket grid manufactured from 10mm diameter grade 304 (18/10) stainless steel round bar. Wash hand basin size 360x280x140mm deep with a 40mm waste outlet is included on the left or right hand side (please specify). Unit complete with two 40x40mm square stainless steel wall mounting gallow brackets. Unit fixed to wall 850mm from the top of the front apron to the finish floor level with 4 off anchor bolts (bolts specified elsewhere).

STANDARD FLUSHING METHOD USING FLUSH VALVE METHODS:

- Cobra model FM 1.000 - 35mm water supply flush valve or,
- Cobra FJ 2.000 - 20mm water supply flush valve and a Cobra FJT 1.2 straight flush pipe connected to CP on brass adaptor (Flush valves else where measured)

SPECIFICATION FOR 11 LITRES STAINLESS STEEL CISTERN:

Grade 304 (18/10) Stainless Steel high level cistern fitted with PVC Beta valve and pull chain connected to slop hopper with 41mm stainless steel flush pipe and CP on brass adaptor

ALTERNATIVE FLUSHING METHOD USING HIGH LEVEL CISTERN:

Slop Hopper can be adapted to flush using an 11 litres high level cistern (Supplied as an optional extra).

Features

- Grade 304 (18/10) Stainless Steel 1.2mm gauge
- Hygienic and durable
- Hinged bucket grid
- Outlet to suit standard 110mm PC or cast iron "P"-Trap
- Pressed wash hand basin integrated into a stepped work top for maximum hygiene.
- 150mm splash back
- 40mm Square tube brackets to allow for wall mounting

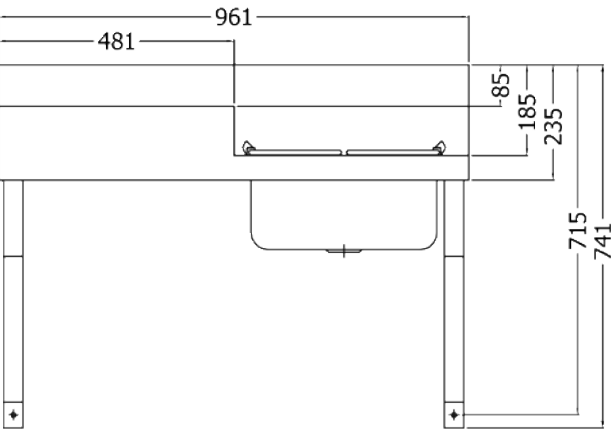
Product code

PRODUCT CODE	BOWL POSITION
351360	Slop hopper to Left Hand Side (Left Hand Unit)
356664	Slop hopper to Right Hand Side (Right Hand Unit)

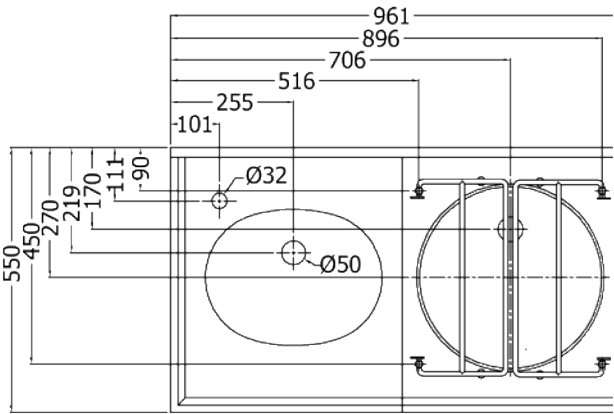
Hospital Products



TAP & WASTE FITTING NOT INCLUDED



FRONT VIEW



TOP VIEW

DSBC Drip Sink & Basin Combination

Specifications

Franke Model DSBC Drip sink wash hand basin combo unit manufactured from 1,2mm thick grade 304 stainless steel with grid, 960x550mm with a 100mm high integral splash back to the rear with a pressed bowl. A hinged bucket grid shall be fitted over the drip sink manufactured from 10mm Grade 304 (18/10) Stainless Steel round bar. Unit complete with two 40x40mm square stainless steel wall mounting gallows brackets. Unit fixed to wall 850mm from the top of the front apron to the finish floor level with 4 off anchor bolts (bolts specified elsewhere).

Features

- Grade 304 (18/10) Stainless steel.
- Pressed drip sink bowl.
- Pressed wash hand basin.
- Hinged bucket grid
- Model - DSBC
- 40x40mm Stainless Steel Square Tube Brackets.

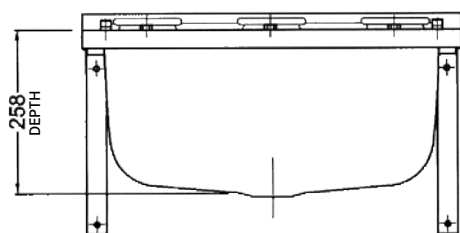
Product code

PRODUCT CODE	BOWL POSITION
350954	DSBC Drip Sink Left Hand Side (Left Hand Unit)
350955	DSBC Drip Sink Right Hand Side (Right Hand U nit)

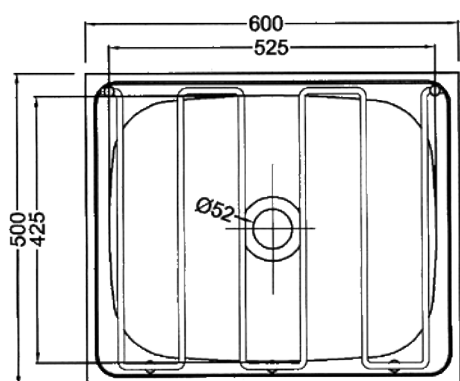
LDS Drip Sink / Cleaner Sink



TAP & WASTE FITTING NOT INCLUDED



FRONT VIEW



TOP VIEW

Specifications

Franke model LDS drip sink 600x500x258mm deep manufactured from Grade 304 (18/10) stainless steel 0,9mm thick and with a 40mm waste outlet. Unit fitted with stainless steel hinged bucket grid manufactured from 10mm stainless steel round bar and a pair of stainless steel Eagle brackets. Unit fixed to wall 600mm high from the top of the front apron to the finish floor level with 4 off anchor bolts (bolts specified elsewhere).

Features

- Grade 304 (18/10) 0.9mm Stainless Steel
- Large bowl 43 litres capacity
- One piece pressed construction
- Hinged bucket grid
- Stainless Steel Eagle Brackets.

Product code

350960

Hospital Products



TAP, BOTTLE TRAP & WASTE FITTING NOT INCLUDED

DSG Drip Sink / Cleaner Sink

Specifications

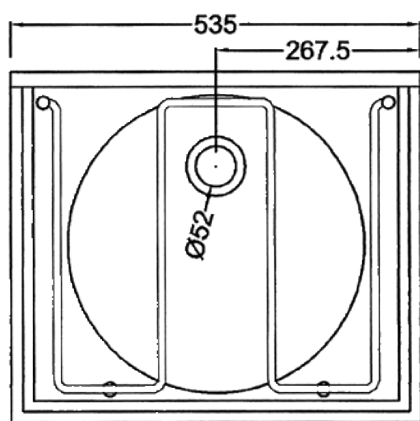
Franke model DSG drip sink 535x454x150mm deep, manufactured from grade 304 (18/10) stainless steel 1,2mm thick with 100 integrated splash back. Unit is fitted with hinged bucket grid manufactured from 10mm stainless steel round bar. Unit complete with two 40x20mm stainless steel wall mounting brackets. Unit fixed to wall 600mm high from the top of the front apron to the finish floor level with 4 off anchor bolts (bolts specified elsewhere).

Features

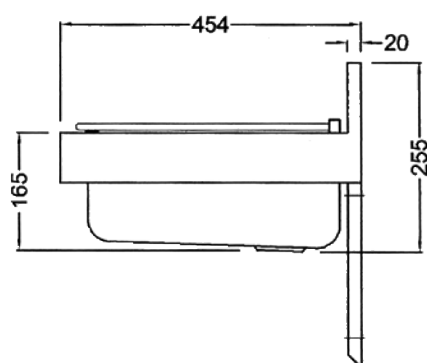
- Grade 304 (18/10) 1.2mm Stainless Steel
- Pressed bowl 0.7mm Stainless Steel
- Hinged bucket grid
- Stainless steel brackets

Product code

350950



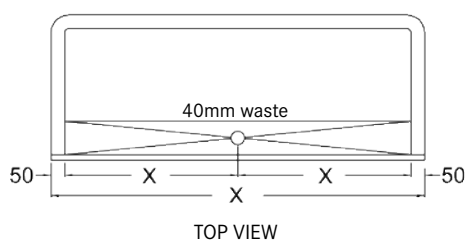
FRONT VIEW



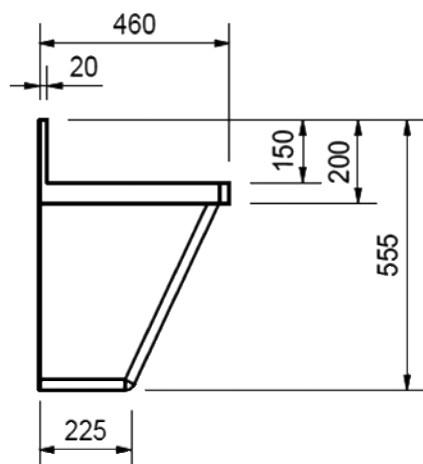
TOP VIEW



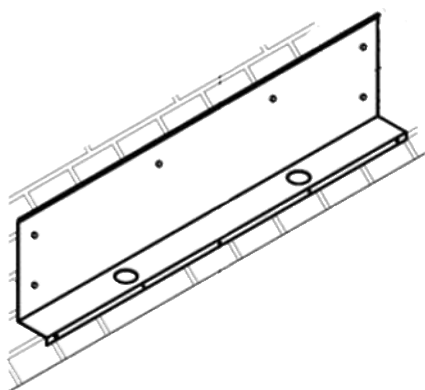
TAP & WASTE FITTING NOT INCLUDED



TOP VIEW



SIDE VIEW



WALL MOUNTING PLATE SUPPLIED WITH UNIT

SSW Hospital Surgeon Scrub-Up Units

Wall Mounted Installation

Specifications

Franke model SSW wall mounted Surgeon's Scrub unit, Length...mm (Please Specify), manufactured from grade 304 (18/10) stainless steel 1,6mm thick with 150mm high integral splashback to back, radiused internal corners and 40mm waste outlet/s (please refer to table below). The front and sides of the unit to be of double walled construction with inner wall sprayed with vermin proof bitumastic sound deadening approximately 2mm thick.

Unit fitted with removable galvanised mild steel 2mm thick fixing plate. Unit fixed to wall 900mm high from the top of the front apron to the finish floor level with anchor bolts (bolts specified elsewhere).

Features

- Grade 304 (18/10) Stainless Steel 1.6mm gauge
- Four standard lengths
- Hygienic
- Double walled construction
- 150mm high splash back

Wall mounting supplied with galvanised fixing plate - SSW

Product code

PRODUCT CODE	MODEL	LENGTH	NO. OF OUTLETS
351900	SSW 12	1200mm	1
351950	SSW 15	1500mm	1
352000	SSW 18	1800mm	2
352050	SSW 21	2100mm	2

Hospital Products



SSF Hospital Surgeon Scrub-Up Unit

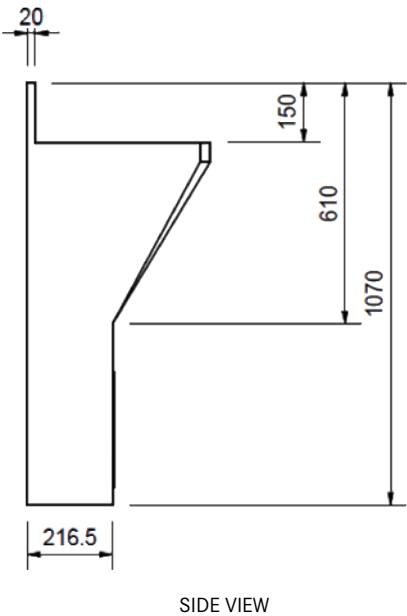
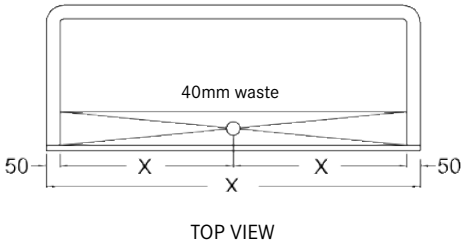
Wall & Floor Mounted Installation

Specifications

Franke model SSF floor mounted Surgeon’s Scrub-up unit, Length...mm (Please Specify), manufactured from grade 304 (18/10) Stainless Steel 1,6mm thick with 150mm high integral splashback to back with radiused internal corners and provision for 40mm waste outlet/s (Please refer to table below). The front and sides of unit to be double walled construction with inner wall sprayed with vermin proof bitumastic sound deadening. Unit with 300x300mm removable inspection panels in the front skirting for access to fit the waste outlets in the trough. Unit fixed to wall and floor with anchor bolts (bolts specified elsewhere).

Features

- Grade 304 (18/10) Stainless Steel 1.6mm gauge
- Four standard lengths
- Hygienic
- Double walled construction
- 150mm high splash back

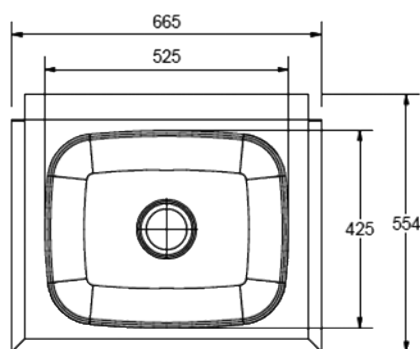


Product code

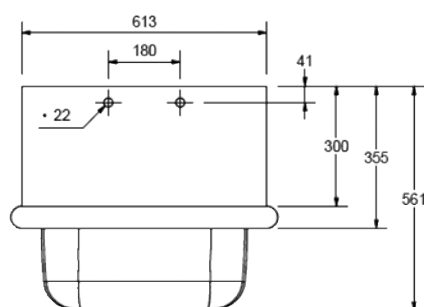
PRODUCT CODE	MODEL	LENGTH	NO. OF OUTLETS
351650	SSF 12	1200mm	1
351700	SSF 15	1500mm	1
351750	SSF 18	1800mm	2
351800	SSF 21	2100mm	2



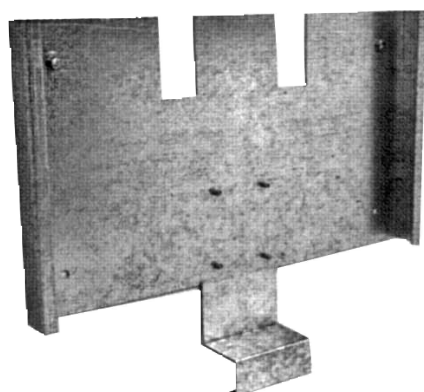
EXCLUDES FITTINGS AND TAP



TOP VIEW



SIDE VIEW



GALVANISED WALL FIXING PLATE

SMS Surgeon Mini Scrub-Up Unit

Specifications

Franke model SMS surgeon scrub-up unit, size 665x554x258mm deep manufactured from grade 304 (18/10) stainless steel 1,6mm thick complete an integral splash back 300mm high with tap holes for a medical elbow action mixer. Unit with a pressed bowl 525x425x258mm deep manufactured from grade 304 (18/10) stainless steel 0.9mm thick with a 90mm waste outlet for a basket strainer fitting (included with unit). Unit fitted with removable galvanised mild steel 1,6mm thick fixing plate. Unit fixed to wall 900mm high from the top of the front apron to the finish floor level with anchor bolts (bolts specified elsewhere).

RECOMMENDED MIXER:

- Cobra Model 508 - 15mm elbow action medical mixer.

Features

- Grade 304 (18/10) Stainless Steel 1.6mm gauge
- Pressed bowl 525x425x258mm deep with 42 litres capacity 0.9mm Gauge
- 300mm high splashback
- Basket strainer 90mm waste
- Wall mounted
- Ideal for clinics, wards and veterinary applications

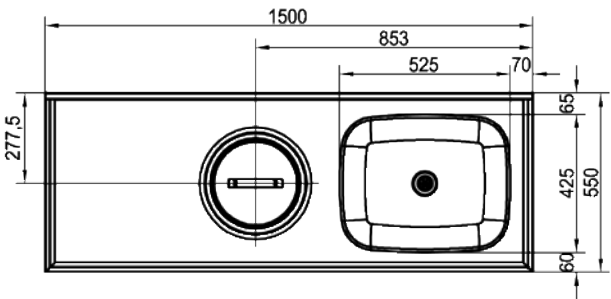
Product code

352060

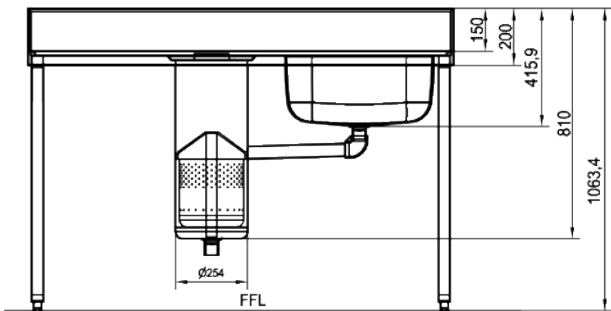
Hospital Products



RIGHT HAND BOWL



TOP VIEW



SIDE VIEW

PP Plaster Of Paris Preparation Sink

Specifications

Franke model PPGL size (please specify) Plaster of paris preparation sink manufactured from grade 304 (18/10) stainless steel 1,2mm thick with a 150mm high integral splashback to the rear. The unit shall be fitted with a pressed preparation bowl measuring 525x425x258mm deep with a 40mm waste outlet discharging into a waste cylinder measuring 250mm and 535mm deep. Waste cylinder fitted with stainless steel lid and removable strainer with provision for 40mm waste outlet. The underside sprayed with vermin proof bitumastic sound deadening and has a galvanised mild steel backing sheet. Unit fixed 900mm high from the top of the front apron to the finish floor level with anchor bolts (bolts specified elsewhere).

Please refer to fixing table for fixing options.

Features

- Grade 304 (18/10) Stainless Steel, 1.2mm gauge
- Plaster bowl with removable stainless steel strainer and lid
- Rinse bowl discharging into plaster bowl
- Hospital bead to prevent spillage
- Pressed seamless bowls designed for the highest level of hygiene and durability.

Product code

PRODUCT CODE	MODEL	DIMENSIONS LXW	BOWL POSITION
351250	PP	1500x550mm	Plaster of Paris Preparation Sink Left Hand Side(Left Hand Unit)
351252	PP	1500x550mm	Plaster of Paris Preparation Sink Right Hand Side(Right Hand Unit)

Non-standard sizes available on request



TAP AND ACCESSORIES NOT INCLUDED

Combi Ward Basin

Specifications

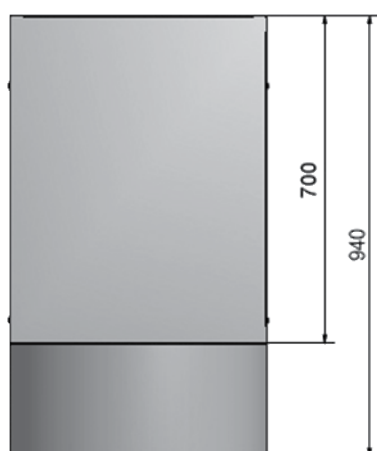
Franke Combi Ward Basin, 550x550x940mm high, manufactured from grade 304 (18/10 Stainless Steel), with a 700mm splashback. Heavy duty basin with polished bowl, 360mm diameter with a 40mm waste outlet. Basin fits over 25mm square Stainless Steel tubular frame bolted to wall with anchor bolts (anchor bolts specified elsewhere) splashback to accommodate sanitary accessories, such as soap dispenser and hand dryer or paper towel dispenser. Tap and accessories sold separately.

Features

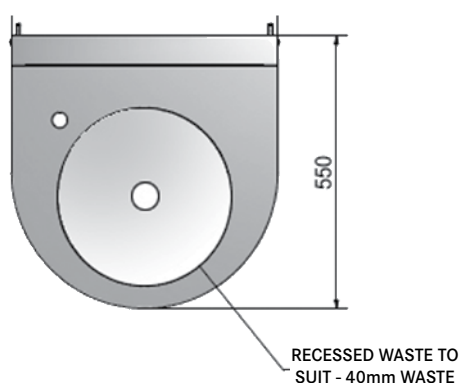
- Grade 304 (18/10) Stainless Steel
- Pressed seamless bowls designed for the highest level of hygiene and durability.
- Basin fits over a 25mm square Stainless Steel framework (supplied with basin) Basket strainer 90mm waste
- Designed to facilitate fitting of a hands free tap, soap dispenser, paper towel dispenser or hand dryer (accessories and tap not included)
- Hygienic and vandal resistant

Product code

356070



FRONT VIEW



Hospital Products



CBDT Baby Bath (Inset Type)

Specifications

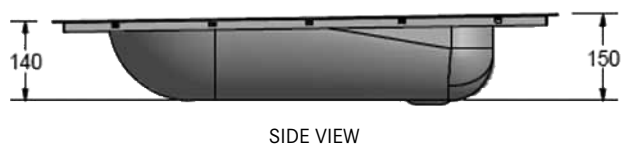
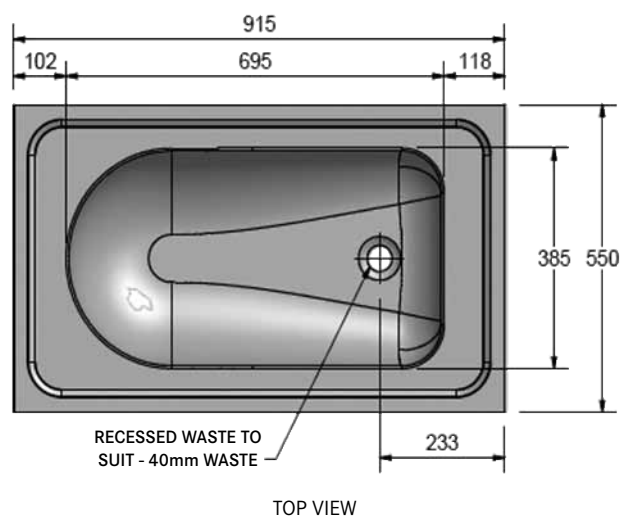
Franke model CBDT inset baby Bath, size 915x550x150mm deep, manufactured from Grade 304 (18/10) stainless steel 1,2mm thick. Unit with a one piece pressed semi circular bowl measuring 695x385x150mm deep with provision for 40mm waste outlet. Unit to be fixed into worktop and secured with fixing clips supplied. Cut out size 855x490mm.

Features

- Grade 304 (18/10) 1.2mm Stainless Steel
- Hygienic and durable
- Pressed semi-circular bowl 0.9 gauge with a 40mm waste outlet

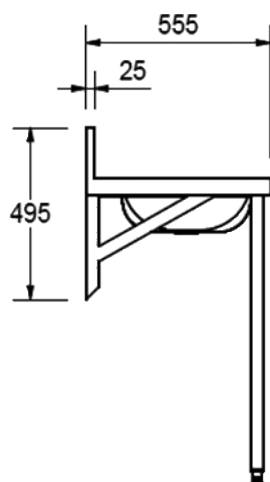
Product code

351100

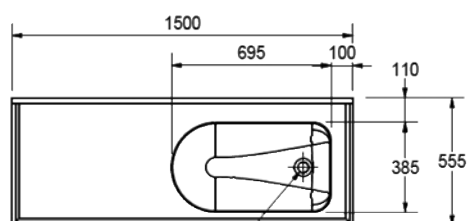




TAP NOT INCLUDED
CB FLOOR MOUNTED INSTALLATION



CB WALL & FLOOR MOUNTED INSTALLATION



RECESSED WASTE TO
SUIT - 40mm WASTE

RIGHT HAND BOWL

CB Baby Bath

Wall & Floor Mounted Installation

Specifications

Franke model CB Baby Bath 1500x555mm manufactured from grade 304 (18/10) stainless steel 1.2mm thick with a 150mm integral splash back to the rear. Unit to be fitted with one piece pressed semi circular bowl measuring 695x385x150mm deep with a 40mm waste outlet. The underside of the drainer shall have a vermin proof bitumastic sound deadening supported with a galvanized backing sheet. Unit fixed 900mm high from the top of the front apron to the finish floor level with anchor bolts (bolts specified elsewhere).

Please refer to fixing table for fixing options.

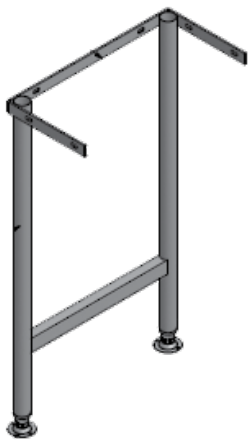
Features

- Grade 304 (18/10) 1.2mm Stainless Steel
- Hygienic and durable
- Pressed semi-circular bowl 0.9 Gauge

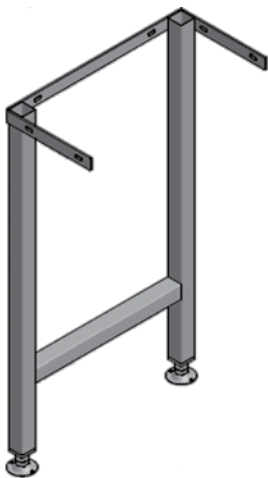
Product code

PRODUCT CODE	MODEL	DIMENSIONS LXW	BOWL POSITION
351050	CB	1500x555mm	Left Hand Side
351052	CB	1500x555mm	Right Hand Side
351000	CB	1320x555mm	Left Hand Side
350970	CB	1320x555mm	Right Hand Side

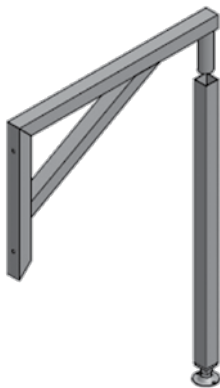
Hospital Products



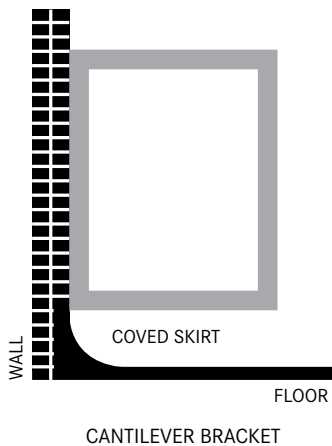
40mm DIAMETER ROUND LEG (PAIR)



40 x 40mm SQUARE LEG (PAIR)



GALLOWS BRACKET WITH REMOVABLE FRONT LEG



CANTILEVER BRACKET

Fixing Options For Plaster Of Paris Sink & Baby Baths

Specifications

STAINLESS STEEL ROUND LEGS

Round Legs manufactured from grade 304(18/10) stainless steel 41mm diameter x 1,2mm thick round tubing. Legs to be detachable and fitted with chrome plated adjustable flanged foot pieces.

STAINLESS STEEL SQUARE LEGS

Square Legs manufactured from grade 304(18/10) stainless steel 40x40mm x 1,2mm thick square tubing. Legs to be detachable and fitted with chrome plated adjustable flanged foot pieces.

STAINLESS STEEL GALLOWS BRACKETS WITH FRONT LEG

Gallows Brackets with Front Legs manufactured from grade 304(18/10) stainless steel 40x40mm x 1,2mm thick square tubing. The front leg is detachable and is fitted with chrome plated adjustable flanged foot pieces.

***These brackets are used in areas where the floors have coved skirting.**

STAINLESS STEEL CANTILEVER BRACKETS

Cantilever Brackets manufactured from grade 304(18/10) stainless steel 40x40mm x 1,2mm thick square tubing.

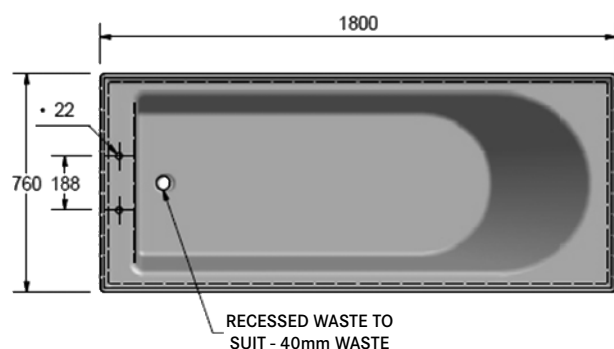
***These brackets are used in areas where the floors have coved skirting and the design makes cleaning under the unit very easy.**

Product code

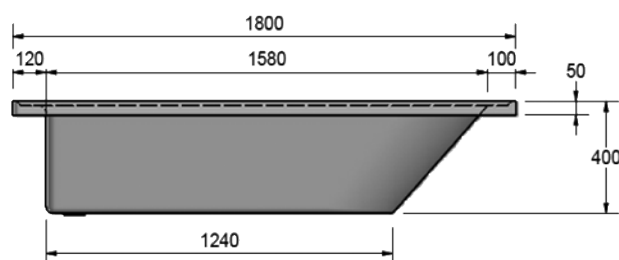
PRODUCT CODE	METHOD	QTY REQUIRED	COMMENTS
352670	40mm diameter round legs	2 pairs	units 2400 mm and longer require additional legs
352672	40 x 40mm square legs	2 pairs	units 2400 mm and longer require additional legs
352674	40 x 40mm square gallows bracket	1 pair	
352676	40 x 40mm square gallows bracket with detachable front leg	1 pair	units 2400 mm and longer require additional bracket and leg
352678	40 x 40mm cantilever bracket	1 pair	units 2400 mm and longer require additional brackets



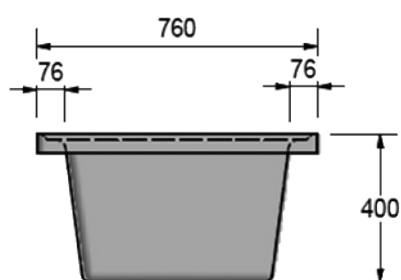
WASTE FITTINGS NOT INCLUDED



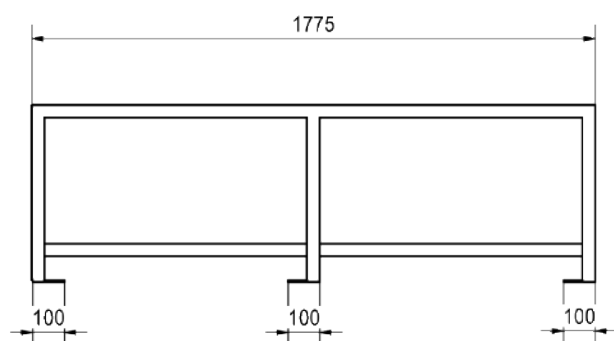
TOP VIEW



SIDE VIEW



FRONT VIEW



OPTIONAL BATH FRAME WITH LEGS

Stainless Steel Bath

For Burn & Wound Treatments

Specifications

Franke model Stainless Steel Bath, size 1800x760x403mm deep, manufactured from Grade 304 (18/10) stainless steel 1.6mm thick. The unit shall be fitted with a fabricated semi circular bowl measuring 1580x608x400mm deep with provision for 40mm waste outlet. Please specify Tap Hole/s diameter if required.

OPTIONAL:

- Stainless Steel frame and legs for bath size 1775x735x550mm high manufactured from 40x40x1,2mm thick square stainless steel tubing with 40x6mm floor fixing flanges to secure the frame to the floor. (bolts specified elsewhere).

Features

- Grade 304 (18/10) 1.6mm Stainless Steel
- Hygienic and durable
- Fabricated semi-circular bowl

Product code

PRODUCT CODE	METHOD	DIMENSIONS LXW	FIXING METHOD
356656	Stainless Steel Bath	1800x760mm	To Brick and Mortar or
356657	Optional Bath Frame with Legs	1775x760mm	Bath Frame with legs available





MORTUARY PRODUCTS

TROLLEYS, BODY TRAY, INSTRUMENT CABINETS, WRITING DESK

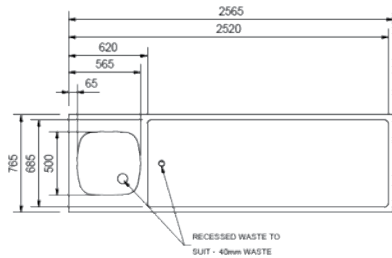
With over 100 years experience in precision stainless steel fabrication and metalwork, Franke have designed a customised range of products for mortuaries, post mortem and autopsy rooms.

All mortuary, autopsy and post mortem equipment is manufactured in top quality Grade 304 & 316 stainless steel, for durability and hygiene.

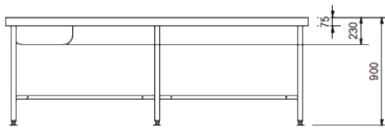
Mortuary Products



TAP & WASTE FITTING NOT INCLUDED



TOP VIEW



SIDE VIEW

MTS Post Mortem Tables

Specifications

Franke Model MTS Post Mortem Table and sink 2565x765x865mm high, manufactured from Grade 304 (18/10) stainless steel 1,6mm thick. Rinse bowl 500x500x230mm deep pressed bowl with a 40mm waste outlet. The underside sprayed with vermin proof bitumastic sound deadening and supported with a 30x30x3mm framework and galvanised mild steel backing sheet. Unit is fitted on to six 40mm stainless steel legs and cross braces, each leg fitted with adjustable flanged foot piece. Unit fixed 900mm high from the top of the front apron to the finish floor level with anchor bolts (bolts specified elsewhere).

OPTIONAL FITTINGS:

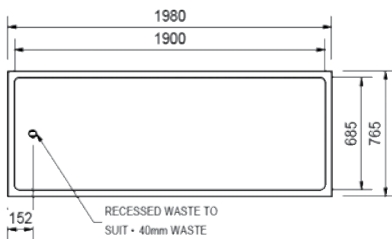
- Cobra Model 515-21 15mm elbow action medical mixer with swan-neck swivel outlet.
- Cobra Model 519-21 15mm elbow control hand shower set.

Features

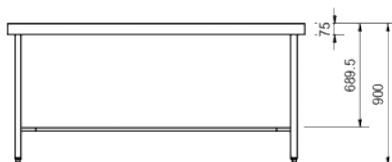
- Grade 304 (18/10) 1.6mm Stainless Steel
- Recessed slab with 30mm deep ledge
- One Piece pressed rinse bowl
- Sound deadened with galvanised backing sheet

Product code

350850



TOP VIEW



SIDE VIEW

MT Post Mortem Tables

Specifications

Franke Model MT Post Mortem Table 1980x765x900mm high manufactured from grade 304 (18/10) stainless steel 1,6mm thick. Slab constructed with 30mm deep recess all round with a built in fall towards the 40mm waste outlet. The underside sprayed with vermin proof bitumastic sound deadening and supported with a 30x30x3mm framework and galvanised mild steel backing sheet. Unit is fitted on to four 40mm stainless steel legs and cross braces, each leg fitted with adjustable flanged foot piece. Unit fixed 900mm high from the top of the front apron to the finish floor level with anchor bolts (bolts specified elsewhere).

OPTIONAL FITTINGS:

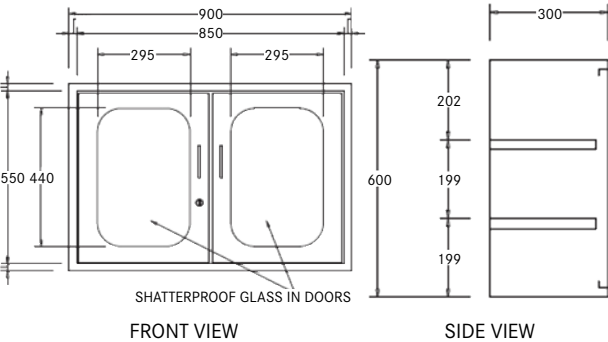
- Cobra Model 519-21 15mm elbow control hand shower set.

Features

- Grade 304 (18/10) 1.6mm Stainless Steel
- Recessed slab with 30mm deep ledge
- Sound deadened with galvanised backing sheet

Product code

350800



Instrument Cabinet

Specifications

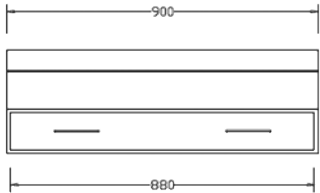
Franke Model Wall Mounted Instrument Cabinet manufactured from grade 316 stainless Steel 1,6mm thick with two hinged doors with shatterproof glass panel. Doors are lockable and are supplied with two keys. Unit has two stainless steel shelves and is provided with two key hole slots for mounting the unit to the wall.

Features

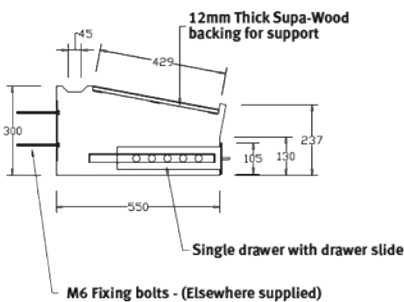
- Wall mounted
- Complete with two doors fitted with shatter proof glass panels and a Cam lock
- Manufactured from 1.6mm Thick Grade 316L Stainless Steel

Product code

PRODUCT CODE	DIMENSIONS LXHXD
359630	900x600x300mm



FRONT VIEW



SIDE VIEW

Writing Desk

Specifications

Franke Model Wall Mounted Writing Desk manufactured from grade 316L stainless steel with a single front drawer on smooth running telescopic slides. The unit has supa-wood backing to provide a firm no flex stainless steel writing surface. Base is removable for easy mounting.

Features

- Wall mounted
- Single Drawer to front mounted on telescopic drawer slides.
- Supa-wood backing to prevent denting of top
- Manufactured from 1.6mm thick grade 316L Stainless Steel

Product code

PRODUCT CODE	DIMENSIONS LXHXD
359631	900x570x300mm





INDUSTRIAL PRODUCTS

SINKS, TABLES, WALL BENCHES AND SHELVING

Heavy duty industrial sinks and tables with sound deadening under frames.

The range is complimented by a selection of modular designed shelving systems for medical and catering applications.

Industrial Products



S1 Stainless Steel Catering Sinks

Specifications

Franke model “S1” Catering Sink single end/centre (please specify) bowl manufactured from grade 304 stainless steel 1,2mm thick with a 150mm high integral splash back to the rear and 50x10mm turndown with a beaded edge on the remaining sides. Sink with pressed 500x500x230mm deep bowl with a 40mm waste outlet. The underside sprayed with vermin proof bitumastic sound deadening and supported with a 30x30x3mm framework and galvanised mild steel backing sheet. Unit fixed 900mm high from the top of the front apron to the finish floor level with anchor bolts (bolts specified elsewhere).

Please refer to fixing table for fixing options.

OPTIONAL ACCESSORIES:

- Stainless or mild steel galvanised solid under shelf
- Stainless or mild steel galvanised slatted under shelf
- Splash backs to ends

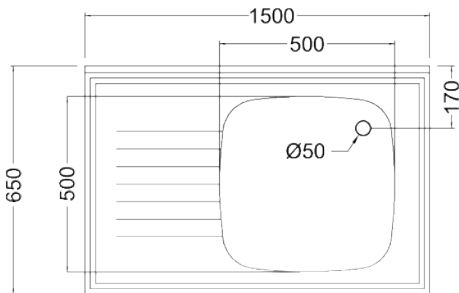
Features

- Pressed bowls 500x500x230mm deep
- Grade 304 (18/10) Stainless Steel 1.2mm gauge
- Fully sound deadened with galvanised backing sheet
- Hospital bead to prevent spillage
- 57 Litre Bowl Capacity

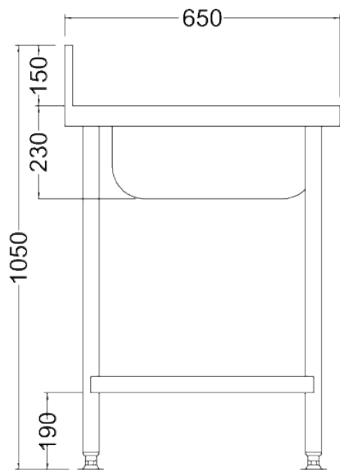
Product code

PRODUCT CODE	DIMENSIONS LXW	BOWL POSITION
353106	1200x650mm	Left Hand
353102	1200x650mm	Right Hand
353104	1200x650mm	Centre
350004	1500x650mm	Left Hand
353152	1500x650mm	Right Hand
353154	1500x650mm	Centre

Non-standard sizes available on request



TOP VIEW



SIDE VIEW

S2 Stainless Steel Catering Sinks



TAP & FITTINGS NOT INCLUDED

Specifications

Franke model "S2" Catering Sink double end/centre (please specify) bowl manufactured from grade 304 stainless steel 1,2 mm thick with a 150mm high integral splash back to the rear and 50x10mm turndown with a beaded edge on the remaining sides. Sink with pressed 500x500x230mm deep bowl with a 40mm waste outlet. The underside sprayed with vermin proof bitumastic sound deadening and supported with a 30x30x3mm framework and galvanised mild steel backing sheet. Unit fixed 900mm high from the top of the front apron to the finish floor level with anchor bolts (bolts specified elsewhere).

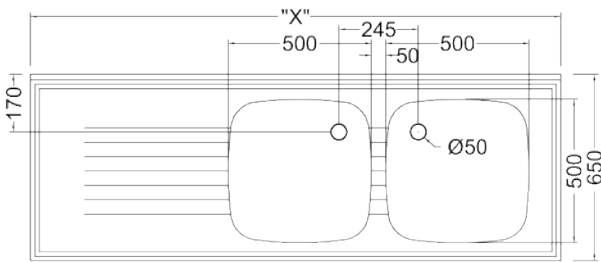
Please refer to fixing table for fixing options.

OPTIONAL ACCESSORIES:

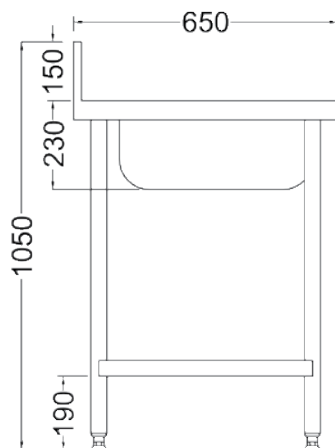
- Stainless or mild steel galvanised solid under shelf
- Stainless or mild steel galvanised slatted under shelf
- Splash backs to ends

Features

- Pressed bowls 500x500x230mm deep
- Grade 304 (18/10) Stainless Steel 1.2mm gauge
- Fully sound deadened with galvanised backing sheet
- Hospital bead to prevent spillage
- 57 Litre Bowl Capacity



TOP VIEW



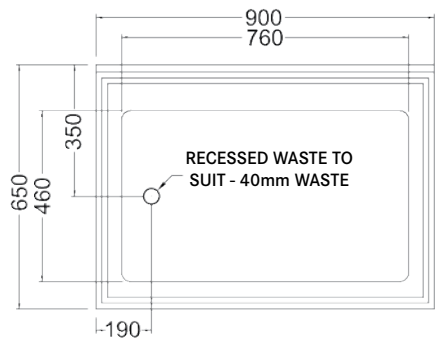
FRONT VIEW

Product code

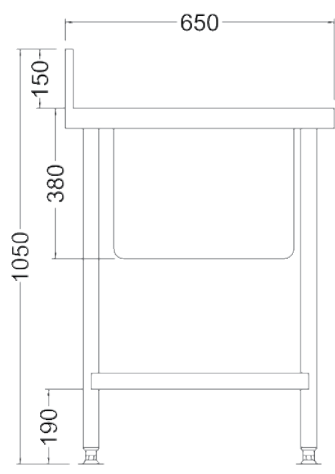
PRODUCT CODE	DIMENSIONS LXW	BOWL POSITION
350036	1500x650mm	Left Hand
353302	1500x650mm	Right Hand
353304	1500x650mm	Centre
353350	1850x650mm	Left Hand
353356	1850x650mm	Right Hand
353358	1850x650mm	Centre
350032	2400x650mm	Left Hand
350042	2400x650mm	Right Hand
350046	2400x650mm	Centre

Non-standard sizes available on request

Industrial Products



TOP VIEW



SIDE VIEW

P1 Stainless Steel Pot Sinks

Specifications

Franke model “P1” Pot Sink single centre/end bowl (please specify) manufactured from grade 304 stainless steel 1,2mm thick with a 150mm high integral splash back to the back and 50x10mm turndown with a beaded edge on the remaining sides.. Sink with a fabricated 760x460x380mm deep bowl with a 40mm waste outlet. The underside sprayed with vermin proof bitumastic sound deadening and supported with a 30x30x3mm framework and galvanised mild steel backing sheet. Unit fixed 900mm high from the top of the front apron to the finish floor level with anchor bolts (bolts specified elsewhere).

Please refer to fixing table for fixing options.

OPTIONAL ACCESSORIES:

- Stainless or mild steel galvanised solid undershelf
- Stainless or mild steel galvanised slatted undershelf
- Splashback to ends

Features

- Grade 304 (18/10) Stainless Steel 1.2mm gauge
- Sound deadened with galvanised backing sheet
- Hospital bead to prevent spillage
- 133 Litre Bowl Capacity

Product code

PRODUCT CODE	DIMENSIONS LXW	BOWL POSITION
350001	900x650mm	Centre

Non-standard sizes available on request

P2 Stainless Steel Pot Sinks

Specifications

Franke model “P2” Pot Sink double centre/end (please specify) bowl pot sink, manufactured from grade 304 stainless steel 1,2mm thick with a 150mm high integral splash back and 50x10mm turndown with a beaded edge on the remaining sides. Sink with a fabricated 760x460x380mm deep bowl with a 40mm waste outlet. The underside sprayed with vermin proof bitumastic sound deadening and supported with a 30x30x3mm framework and galvanised mild steel backing sheet. Unit fixed 900mm high from the top of the front apron to the finish floor level with anchor bolts (bolts specified elsewhere).

Please refer to fixing table for fixing options.

OPTIONAL ACCESSORIES:

- Stainless or mild steel galvanised solid undershelf
- Stainless or mild steel galvanised slatted undershelf
- Splashback to ends

Features

- Grade 304 (18/10) Stainless Steel 1.2mm gauge
- Sound deadened with galvanised backing sheet
- Hospital bead to prevent spillage
- 133 Litre Bowl Capacity

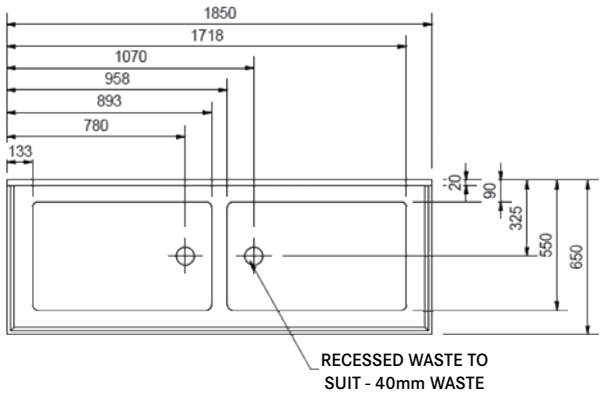
Product code

PRODUCT CODE	DIMENSIONS LXW	BOWL POSITION
352804	1850x650mm	Centre
352850	2400x650mm	Left Hand
352854	2400x650mm	Right Hand
352856	2400x650mm	Centre

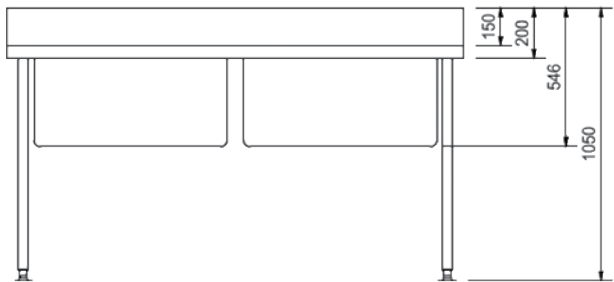
Non-standard sizes available on request



TAP & WASTE FITTINGS NOT INCLUDED



TOP VIEW



FRONT VIEW



31

Fixing Options For S & P Type Sinks

Specifications

STAINLESS STEEL ROUND LEGS

Round Legs manufactured from grade 304(18/10) stainless steel 41mm diameter x 1,2mm thick round tubing. Legs to be detachable and fitted with chrome plated adjustable flanged foot pieces.

STAINLESS STEEL SQUARE LEGS

Square Legs manufactured from grade 304(18/10) stainless steel 40x40mm x 1,2mm thick square tubing. Legs to be detachable and fitted with chrome plated adjustable flanged foot pieces.

STAINLESS STEEL GALLOWS BRACKETS WITH FRONT LEG

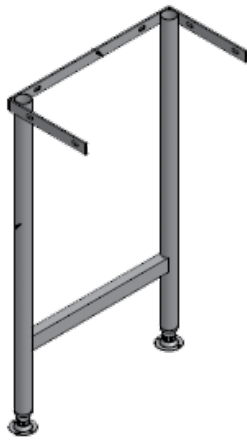
Gallows Brackets with Front Legs manufactured from grade 304(18/10) stainless steel 40x40mm x 1,2mm thick square tubing. The front leg is detachable and is fitted with chrome plated adjustable flanged foot pieces.

***These brackets are used in areas where the floors have coved skirting.**

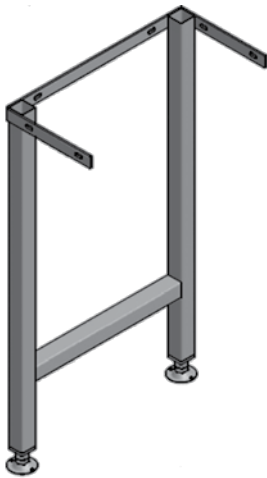
STAINLESS STEEL CANTILEVER BRACKETS

Cantilever Brackets manufactured from grade 304(18/10) stainless steel 40x40mm x 1,2mm thick square tubing.

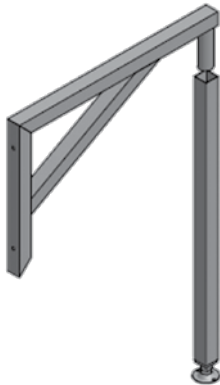
***These brackets are used in areas where the floors have coved skirting and the design makes cleaning under the unit very easy.**



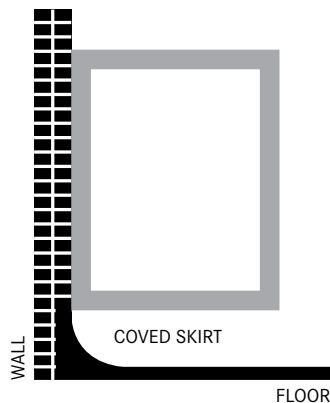
40mm DIAMETER ROUND LEG (PAIR)



40 x 40mm SQUARE LEG (PAIR)



GALLOWES BRACKET WITH REMOVABLE FRONT LEG



CANTILEVER BRACKET

Product code

PRODUCT CODE	METHOD	QTY REQUIRED	COMMENTS
354700	40mm diameter round legs	2 pairs	units 2400 mm and longer require additional legs
354650	40 x 40mm square legs	2 pairs	units 2400 mm and longer require additional legs
354652	40 x 40mm square gallows bracket	1 pair	
352654	40 x 40mm square gallows bracket with detachable front leg	1 pair	units 2400 mm and longer require additional bracket and leg
352656	40 x 40mm cantilever bracket	1 pair	units 2400 mm and longer require additional brackets

Industrial Products



Stainless Steel Tables / Worktops

Specifications

Franke model T Table manufactured from grade 304 stainless steel 1,2mm thick with a 50x10mm turndown all round. The underside sprayed with vermin proof bitumastic sound deadening and supported with a 30x30x3mm framework and galvanised mild steel backing sheet. Unit fixed 900mm high from the top of the front apron to the finish floor level with anchor bolts (bolts specified elsewhere).

Please refer to fixing table for fixing options.

OPTIONAL ACCESSORIES:

- Stainless or mild steel galvanised solid undershelf
- Stainless or mild steel galvanised slatted undershelf

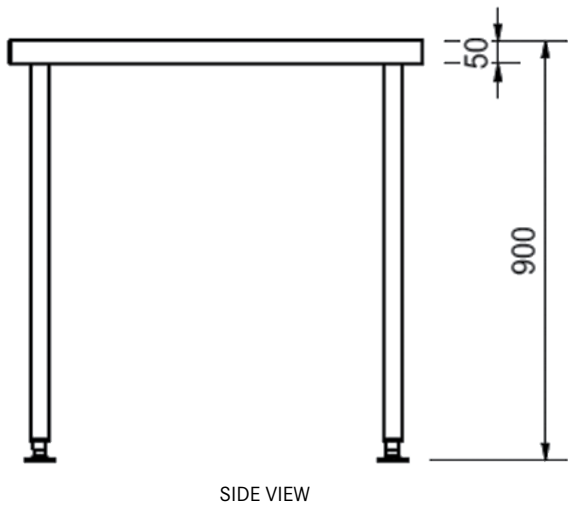
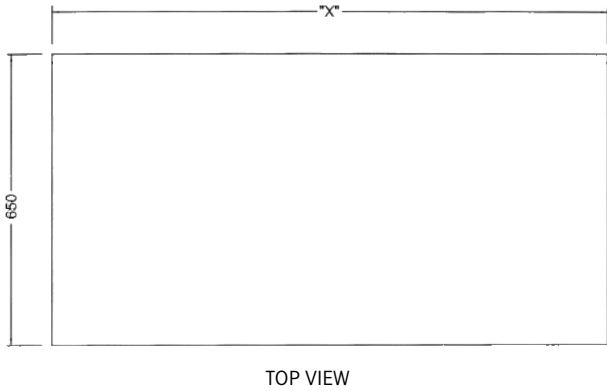
Features

- Grade 304 (18/10) Stainless Steel, 1.2mm gauge
- Sound deadened with galvanised back sheet

Product code

PRODUCT CODE	DIMENSIONS LXW
359508	1500x650mm
359514	1850x650mm
359526	2400x650mm

Non-standard sizes available on request



Wall Benches



Specifications

Franke model W Wall Bench manufactured from grade 304 stainless steel 1,2mm thick with a 150mm integral splash back at the back and 50x10mm turndown on the remaining sides. The underside sprayed with vermin proof bitumastic sound deadening and supported with a 30x30x3mm framework and galvanised mild steel backing sheet. Unit fixed 900mm high from the top of the front apron to the finish floor level with anchor bolts (bolts specified elsewhere).

Please refer to fixing table for fixing options.

OPTIONAL ACCESSORIES:

- Stainless or mild steel galvanised solid under shelf
- Stainless or mild steel galvanised slatted under shelf
- Splash backs to ends

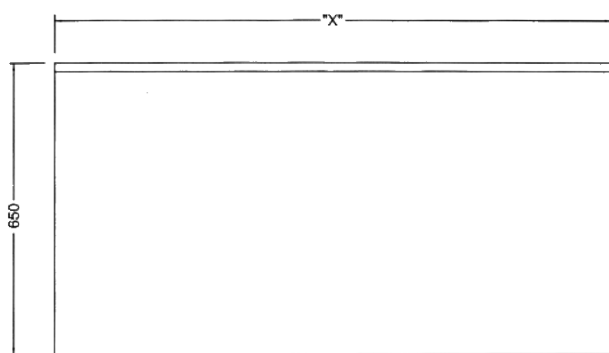
Features

- Grade 304 (18/10) Stainless Steel, 1.2mm gauge
- Sound deadened with galvanised back sheet

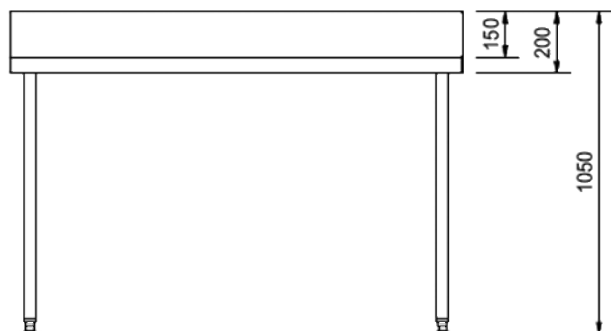
Product code

PRODUCT CODE	DIMENSIONS LxW
359558	1500x650mm
359564	1850x650mm
359576	2400x650mm

Non-standard sizes available on request

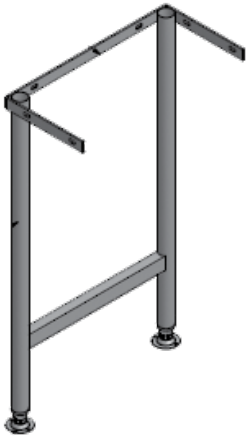


TOP VIEW

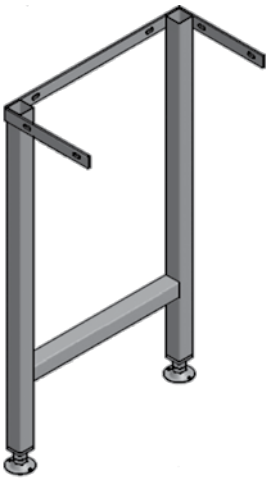


FRONT VIEW

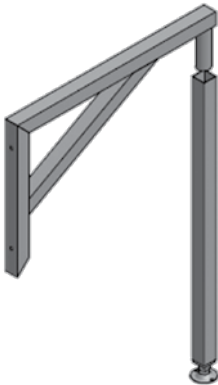
Industrial Products



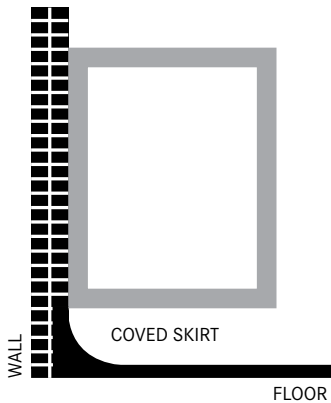
40mm DIAMETER ROUND LEG (PAIR)



40 x 40mm SQUARE LEG (PAIR)



GALLOWS BRACKET WITH REMOVABLE FRONT LEG



CANTILEVER BRACKET

Fixing Options For Tables & Wall Benches

Specifications

STAINLESS STEEL ROUND LEGS

Round Legs manufactured from grade 304(18/10) stainless steel 41mm diameter x 1,2mm thick round tubing. Legs to be detachable and fitted with chrome plated adjustable flanged foot pieces.

STAINLESS STEEL SQUARE LEGS

Square Legs manufactured from grade 304(18/10) stainless steel 40x40mm x 1,2mm thick square tubing. Legs to be detachable and fitted with chrome plated adjustable flanged foot pieces.

STAINLESS STEEL GALLOWS BRACKETS WITH FRONT LEG

Gallows Brackets with Front Legs manufactured from grade 304(18/10) stainless steel 40x40mm x 1,2mm thick square tubing. The front leg is detachable and is fitted with chrome plated adjustable flanged foot pieces.

***These brackets are used in areas where the floors have coved skirting.**

STAINLESS STEEL CANTILEVER BRACKETS

Cantilever Brackets manufactured from grade 304(18/10) stainless steel 40x40mm x 1,2mm thick square tubing.

***These brackets are used in areas where the floors have coved skirting and the design makes cleaning under the unit very easy.**

Product code

PRODUCT CODE	METHOD	QTY REQUIRED	COMMENTS
352658	40mm diameter round legs	2 pairs	units 2400 mm and longer require additional legs
352660	40 x 40mm square legs	2 pairs	units 2400 mm and longer require additional legs
352662	40 x 40mm square gallows bracket	1 pair	
352664	40 x 40mm square gallows bracket with detachable front leg	1 pair	units 2400 mm and longer require additional bracket and leg
352666	40 x 40mm cantilever bracket	1 pair	units 2400 mm and longer require additional brackets

Undershelves For Sinks And Tables



Specifications / Features

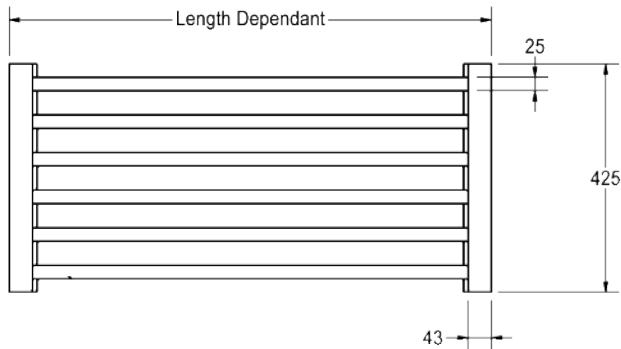
Manufactured from grade 304 (18/10)
 1.2mm Stainless Steel solid or slatted
 1.2mm Galvanised Mild Steel solid or slatted

Sizes available:

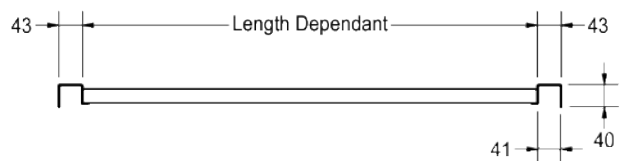
1. 900x420mm
2. 1850x420mm
3. 2400x420mm
4. Variousx420mm

NB: Please specify requirements:

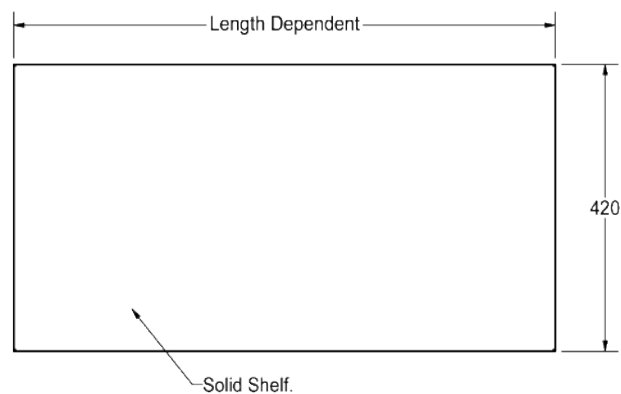
- a) stainless steel or mild steel
- b) solid or slatted
- c) required size



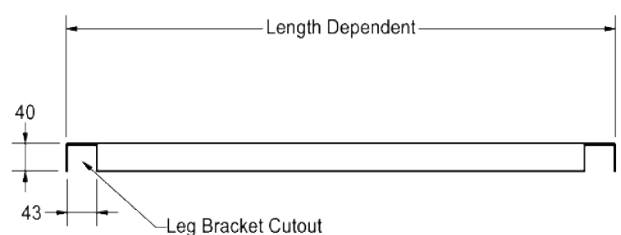
TOP VIEW



FRONT VIEW



TOP VIEW



FRONT VIEW

Product code

PRODUCT CODE	DIMENSIONS LXW	BOWL POSITION
355900	1500x420mm	Stainless Solid
356200	1500x420mm	Stainless Slatted
355300	1500x420mm	Galvanised Solid
355600	1500x420mm	Galvanised Slatted
359254	1850x420mm	Stainless Solid
359268	1850x420mm	Stainless Slatted
359218	1850x420mm	Galvanised Solid
359238	1850x420mm	Galvanised Slatted
359258	2400x420mm	Stainless Solid
359272	2400x420mm	Stainless Slatted
359222	2400x420mm	Galvanised Solid
359242	2400x420mm	Galvanised Slatted

Non-standard sizes available on request



Fastrack Modular Shelving

Specifications

Franke Model Fastrack Modular Shelving Solid/Louvred (please specify) Shelves manufactured from 1.2mm thick grade 304 (18/10) stainless steel with die cast aluminium corner brackets for fixing to Ø 25mm vertical posts.

Posts are made from 1.2mm thick Ø 25mm diameter stainless steel and fitted with end caps at one end and adjustable foot piece.

Features

- Modular – easy to assemble, expand and adjust
- Mobile – suitable for many applications
- Durable – constructed and designed to the highest standards of strength and hygiene

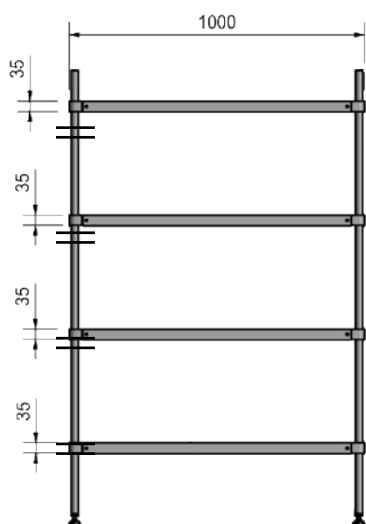
OPTIONAL EXTRAS:

- Set of four castors 125mm ø/two lockable

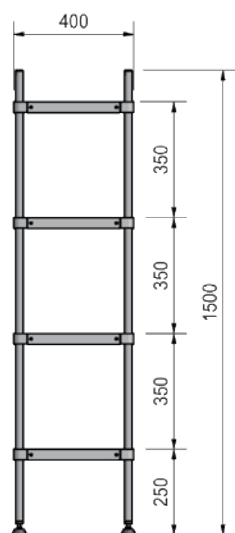
Product code

Standard Shelving Sizes

PRODUCT CODE	DIMENSIONS - LXW	TYPE OF SHELF
358000	750x400mm	Solid
358080	750x500mm	Solid
358320	750x400mm	Louvred
358400	750x500mm	Louvred
358020	1000x400mm	Solid
358100	1000x500mm	Solid
358340	1000x400mm	Louvred
358420	1000x500mm	Louvred
358040	1250x400mm	Solid
358120	1250x500mm	Solid
358360	1250x400mm	Louvred
358440	1250x500mm	Louvred
358060	1500x400mm	Solid
358140	1500x500mm	Solid
358380	1500x400mm	Louvred
358460	1500x500mm	Louvred



FRONT VIEW



SIDE VIEW

Non-standard sizes available on request

Stainless steel posts with 1,2mm wall thickness 25mm ø:

PRODUCT CODE	POST HEIGHT WITH ADJUSTABLE FOOT
354300	1000mm
354302	1500mm
354304	1800mm
354306	2000mm

Non-standard sizes available on request

Posts with castors:

PRODUCT CODE	POST HEIGHT WITH CASTORS
354307	1000mm
354308	1500mm
354309	1800mm
354310	2000mm

Z-Series Shelving

Specifications

Franke Model Z-Series Adjustable Shelving manufactured from grade 18/10 stainless steel 1,2mm thick. One piece shelf and integrated bracket with a 25mm apron to front and sides with 30mm turn up at back and safety edge on corners.

WALL BANDS

Franke Model Z-Series Wall Bands manufactured from grade 18/10 Stainless Steel 1,2mm thick. Available in 1000mm; 1500mm and 1800mm Lengths and are double slotted to allow for two shelves to be lined up next to each other on a single wall band with very little space between shelves.

OPTIONAL EXTRAS:

- Grade 316 Stainless Steel, Solid or Perforated Shelves, 300 or 400mm Wide Shelves.

Features

- Modular – easy to assemble, expand and adjust
- Durable – constructed and designed to the highest standards of strength and hygiene

Product code

Standard Shelving Sizes

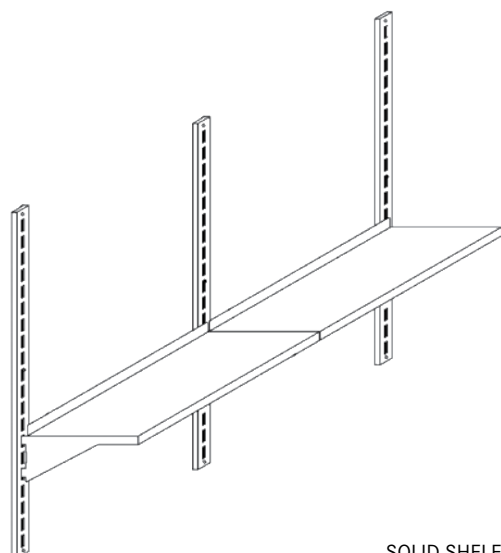
PRODUCT CODE	DIMENSIONS LXW	TYPE OF SHELF
355064	900x300mm	Solid
355062	900x300mm	Perforated
355070	900x400mm	Solid
355072	900x400mm	Perforated
355082	1200x300mm	Solid
355080	1200x300mm	Perforated
355092	1200x400mm	Solid
355090	1200x400mm	Perforated

Non-standard sizes available on request

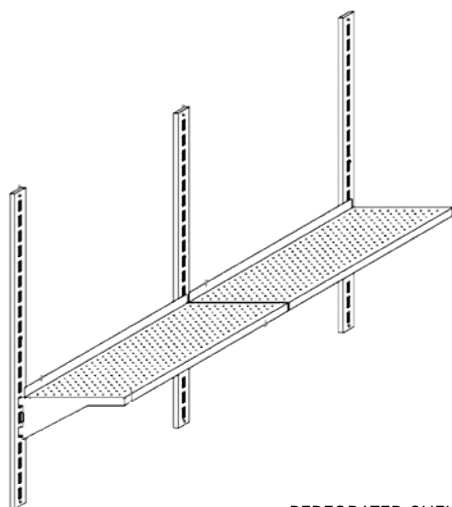
Stainless steel Wall Band

PRODUCT CODE	STAINLESS STEEL WALL BAND LENGTH
359606	1000 mm
359604	1500 mm
359608	1800 mm

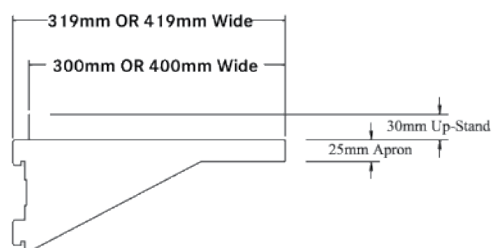
Non-standard sizes available on request



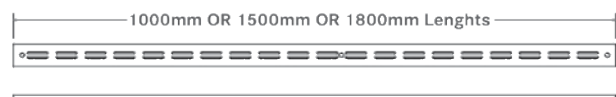
SOLID SHELF



PERFORATED SHELF



SHELF BRACKET INCLUDED



WALL BAND





OTHER FRANKE PRODUCTS

Other Franke Products



Washroom Accessories

Franke have a wide range of stainless steel accessories for all applications; hands free, wall mounted and recessed accessories. Our product range includes solid stainless steel bathroom accessories, ideally suited for such applications as: hospitals and clinics. The new Rodan range of accessories, its timeless design with angular side profiles lends itself to the contemporary décor of heavily frequented washrooms and rest rooms.



Hands Free Accessories

Franke always strives to find the ultimate hygiene solutions without compromising quality and durability. The hands free accessories offer a hygienic solution for usage in heavily frequented washrooms, wards and rest rooms. The range includes a sensor operated: soap dispenser, paper towel dispenser and hand dryer.



Grab Rails

Franke grab rails offer a secure support, thanks to Franke's Fine-Grip surface finish, for use in private homes and public, clinical and care sectors.



Water Management

Complementing the Franke range of accessories, a new range of self closing / sensor operated basin taps and mixers have been added. The taps and mixers are of a heavy duty design to improve hygiene and decrease water consumption in public ablutions. The range comprises of an electronic sensor operated mixer and self closing taps and mixers.



Filterflow Water Purification Mixer

Discover the unique advantages and health benefits of the Franke Filterflow water filtration system. Designed and fitted with a premium-grade carbon activated cartridge, the Franke Filterflow is a health-conscious and quality drinking water filtration system. The Filterflow dispenses hot, cold and perfectly filtered drinking water. The filtration system has the ability to filter out chlorides, odours and sedimentation from the water, it however does not 'strip' the water of its goodness and retains beneficial minerals such as calcium and magnesium - essential for a healthy diet.



Zip Hydroboils & Chillers

Zip HydroBoils are convenient plumbed-in boiling water systems that deliver instant boiling water 24 hours a day. It is a sealed system to provide ultimate hygiene and low electricity consumption. It is steam free and low maintenance. Zip chillers are manufactured to provide chilled water under extreme temperatures. The units are plumbed to provide low operating costs, together with convenience.



Sanitaryware

The use of Stainless Steel as the material of first choice for products in public and semi-public washrooms has become today's standard for good reasons. This material is robust and, easy to maintain, and therefore is very durable which makes the products economical over the lifetime of the building. Sanitary fixtures that inhibit vandalism and are easy to clean help building operators to keep service and maintenance costs to a minimum.

Practical experience shows that using high-quality materials reduces the staining of products that helps to maintain the appearance of heavily used washrooms. Wash stations and accessories take on a hygienic atmosphere. Thanks to its durable and hygienic characteristics, Stainless Steel provides clean and, safe products for public washrooms.



DEKO 25



DEKO 190

Deko Disinfection Equipment

DEKO-25 WASHER- DISINFECTOR employing thermal disinfection for the washing and disinfection of medical instruments and products similar to them and used for similar purposes.

DEKO-190 WASHER- DISINFECTOR (Bedpan Washer) employing thermal disinfection of human waste-containers intended for re-use such as: portable sanitary pans, hospital hollowware, bowls, kidney dishes, urine bottles, suction bottles and products similar to them and used for similar purposes.

DEKO-260E Cabinet type single chamber washing disinfector (dryer optional) for surgical instruments, anaesthetic and respiratory equipment, hollowware, utensils, glassware etc.

DEKO-2000 Cabinet type single chamber, washer disinfector (dryer optional) for surgical instruments, anaesthetic and respiratory equipment, hollowware, utensils, glassware etc.



DEKO 260



DEKO 2000

DEKO-DC2000E Drying cabinet is designed especially for drying surgical instruments, anaesthetic and hoses & equipment, as well as, other re-usable items used in patient health care. It is dimensioned particularly for use together with Deko-2000- Series washer disinfectors. The chamber can accommodate two full loads (4 + 4 shelves) from the washers. The sound and heat insulated double walls of the cabinet and made of AISI304 Stainless Steel. DC- 2200 is available as a single door or pass through model, left or right-hinged.

DC- 2200
DC- 2200X

Single door, left or right hinged
Pass- through, left or right hinged



DEKO DC2000

CONTACT US FOR FURTHER INFORMATION:

FRANKE WASHROOM SYSTEMS (PTY) LTD

TEL: 0861 372 653
FAX: (+27-31) 450 6302
e-mail: enquiry.fsa@franke.com
Website: www.franke.co.za

Other Franke Products

Standard Mortuary Equipment



KZ Autopsy Table

Features

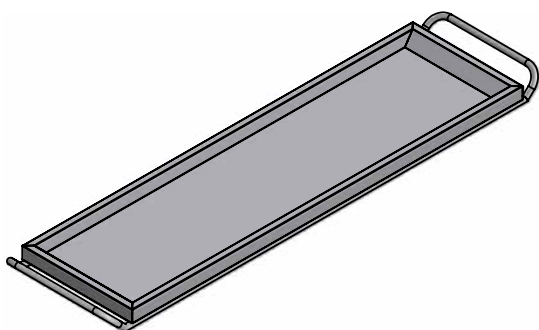
- Manufactured in grade 316L laboratory stainless steel
- Heavy duty construction with 2mm gauge top and 1.6 mm panels
- Heavy duty pedestal for fixing to plinth
- Removable panels for inspection and maintenance
- Ergonomic design to facilitate free operator movement
- Removable grid overflow
- Integral rinsing system with cold water control and flexible 3m flexible hose and spray nozzle
- Integrated 110 mm Ø stainless steel waste outlet for connection to PVC S-trap
- Provision for electrical plug point connection
- Sloped corners and edges to facilitate easier cleaning
- Removable catch grid fitted to specially designed fixing lugs to edge of bowl



Franke Modular Body Racks

Features

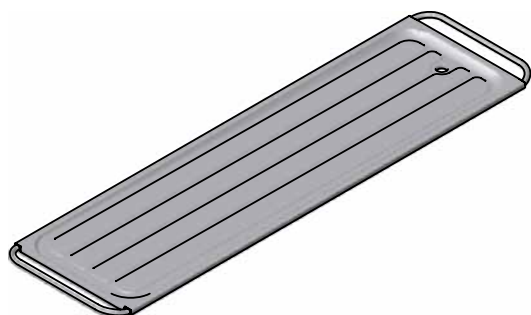
- Manufactured in grade 304 stainless steel
- Modular design for multiple combinations with variable shaft and roller assemblies to suite various cold room dimensions.
- Solid 16mm Ø roller shafts
- Nylon rollers to suite body tray handling
- Durable design with 40 x 40 x 1.5mm gauge square tubing and 3mm gauge stainless steel gussets.
- Adjustable stainless steel foot piece



BTS Standard and Obese Body Tray

Features

- Grade 304 stainless steel
- Designed to suit Franke body racks
- 50 mm depth forensic body tray



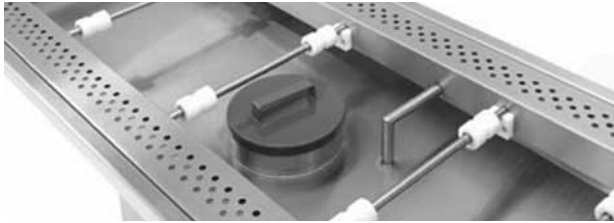
Stainless Steel Pressed Body Tray

Features

- Choice of Grade 304 or 316 (18/10) 1.2mm Stainless Steel
- Hygienic and durable
- 50 mm depth forensic body tray
- Standard or Obese

Ventilated Autopsy Tables

Exposure to both hazardous fumes and airborne pathogens and controlled at limits that are an order of magnitude less than (COSHH) (OSHA) Levels. Down draught ventilated tables are designed to improve working conditions, where there is exposure to hazardous fumes and airborne pathogens.



VAT 1 - Ventilated Autopsy Table

Franke always strives to find the ultimate hygiene solutions without compromising quality and durability. The hands free accessories offer a hygienic solution for usage in heavily frequented washrooms, wards and rest rooms. The range includes a sensor operated: soap dispenser, paper towel dispenser and hand dryer



VAT 2 - Ventilated Autopsy Table With Sink

Designed and developed an open autopsy table system that not only has efficient extraction, but also is easy to clean, ergonomic and simple to install. The table can be supplied in its basic form or in the enhanced version with integral sinks, with hot and cold mixer taps. Products can be customized to meet your individual needs, work flow, special procedures and room layout.



VST 1 - Ventilated Specimen Table

The ventilated specimen table is manufactured from high quality Stainless Steel throughout and mounted on a steel support structure. The unit is manufactured with adjustable feet for final on site levelling to ensure a fully level surface is achieved. The unit is free standing with no special fixing to the floor or wall. The top of the ventilated specimen table is manufactured from Grade 316 Stainless Steel to form a fully welded trough section that acts as the sump. All of the outside surfaces are cleaned and fully polished.



VST 8 - Ventilated Staining Table

The ventilated staining table is manufactured from high quality Stainless Steel throughout and mounted on a steel support structure. The unit is designed to provide a kneehole facility in the front of the unit. This unit requires a clearance of a 100mm for service pipework to run comfortably along the wall. The unit is manufactured with adjustable feet for final on site levelling to ensure a fully level surface is achieved. The unit is free standing with no special fixing to the floor or wall. The top of the ventilated staining table is manufactured from Grade 316 Stainless Steel to form a fully welded trough section that acts as the sump. All of the outside surfaces are cleaned and fully polished



VDT 10 - Ventilated Dissection Table

The ventilated dissection table provides the opportunity to ventilate at the working position thereby providing maximum safety. The ventilated dissection table is designed for pathological dissection and is designed to link into the fume extraction system and if required can have a sluice unit fitted for additional waste facilities.

NOTE: These items are designed for specific installations and as such we request you to contact FRANKE for further information and assistance.

T: 0861 372 653 F: (+27-31) 450 6302 E: enquiry.fsa@franke.com W: www.franke.co.za

FRANKE KITCHEN SYSTEMS (PTY) LTD

CALL CENTRE

Tel 0861 372 653

Fax +27 31 450 6302

enquiry.fsa@franke.com

www.franke.co.za

DURBAN

1194 South Coast Road,

Mobeni, Durban, 4092.

South Africa

Tel +27 31 450 6300

Fax +27 31 450 6303

GAUTENG

77 Roan Crescent,

Sage Corporate Park North,

Old Johannesburg Road,

Midrand, 1682

South Africa

CAPE TOWN

Unit 29, Gold Street,

Northgate Business Park, Northgate Estate,

Cape Town, 7405

South Africa

DISCLAIMER

The information and data supplied in this brochure is based on information believed to be reliable, however it is not binding and inaccuracies may occur. Franke reserves the right to change specifications and design at any time without notice.

© 2010 by Franke Kitchen Systems (Pty) Ltd. All rights reserved under the Copyright Act of 1987 with amendments. Reproduction of any of the content, full or partial, is allowed only with the prior written approval of Franke Kitchen Systems (Pty) Ltd. No reasonable requests will be refused provided conditions as laid out are met.

All information provided in this brochure is for informational purposes only. All information, text, technical drawings and images are the exclusive property of Franke. The content herein may not be reproduced in whole or part. Any use of the content without written permission from Franke is prohibited.



WASHROOM
SYSTEMS