

WASH HAND BASINS



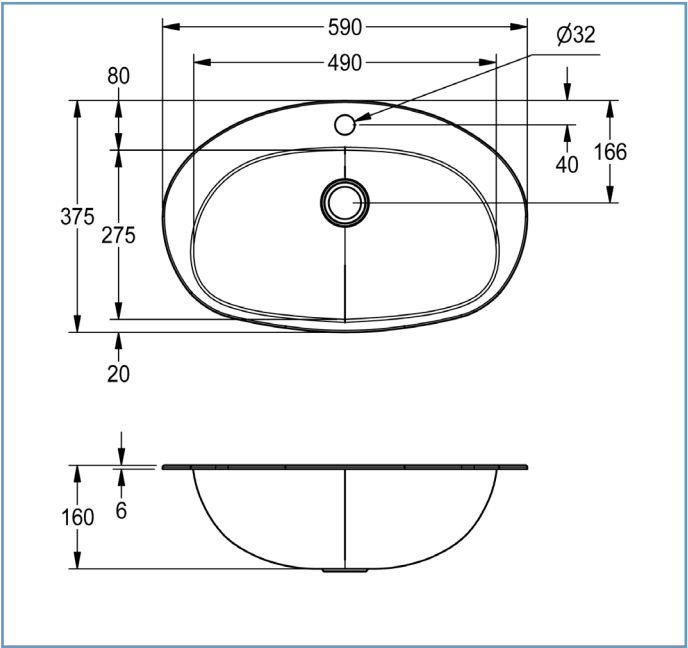
Public ablutions are subjected to heavy usage and vandalism and yet, they have to look aesthetically pleasing at all times. Franke offer a wide range of basins to suit different applications that range from upmarket shopping centres, to heavy duty industrial applications.

Various Designs for Different Applications:

- Inset or undermount models
- Standard wall mounted
- Single or extended versions (ranges of basins)
- Heavy duty

.....
OVAL V
.....

.....
INSET VANITY BASINS
.....



.....
FEATURES:
.....

- Basin one pieced pressed
- Hygienic and vandal resistant
- High grade austenitic Stainless Steel

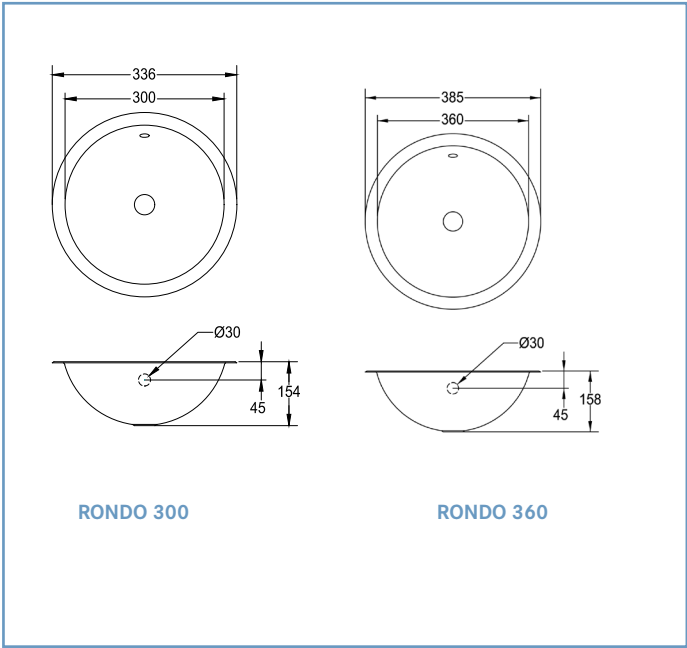
Product Code: 357457

.....
SPECIFICATION:
.....

Franke Model Oval V inset vanity basin , 590x375x160mm. Unit to be manufactured from a high grade austenitic Stainless Steel, 0,8mm gauge. Bowl size 490x275x160mm deep with 40mm waste outlet and overflow hole, tap ledge including a 32mm tap hole. The underside of the basin to include Stainless Steel lugs for mounting the unit to the worktop.

RONDO 300 & 360

INSET/UNDERMOUNT VANITY BASINS



FEATURES:

- Grade 304 (18/10) polished Stainless Steel
- Basin one pieced pressed
- Hygienic and vandal resistant
- Inset or undermount
- The basin is designed for surface or under mounting installations.

SPECIFICATION:

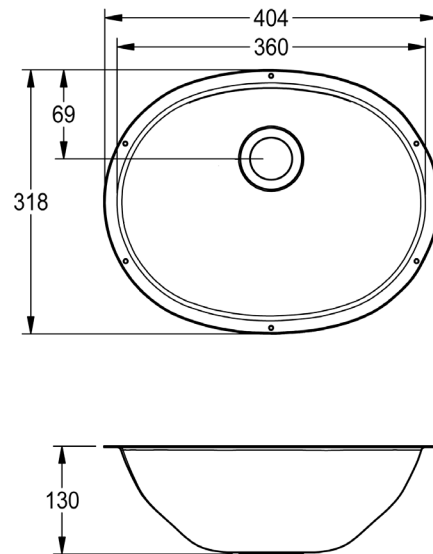
Franke Model... (please specify) inset vanity basin. Unit to be manufactured from Grade 304 (18/10) Stainless Steel. Bowl size 300mm diameter x 154mm deep with 18mm flange **or...** 360mm diameter x 158mm deep with 12.5mm flange. Both with 40mm waste outlet and overflow hole. Basin to be fitted as an inset or undermount (please specify).

PRODUCT CODE	MODEL	DIMENSIONS
820075	RONDO300 with 40mm waste	300mm Ø
820074	RONDO360 with 40mm waste	360mm Ø

UNDERMOUNT WASH HAND BASIN



TAP & WASTE FITTING NOT INCLUDED



FEATURES:

- Grade 304 (18/10) polished Stainless Steel, 1,2mm gauge
- Basin one pieced pressed
- Hygienic and vandal resistant
- The basin is designed for under mounting installations

SPECIFICATION:

Franke Undermount Wash Hand Basin, 404x318x130mm. Unit to be manufactured from Grade 304 (18/10) Stainless Steel, 1,2mm gauge. Bowl size 360x280x130mm deep with a 22mm flanges all round and 40mm waste outlet.

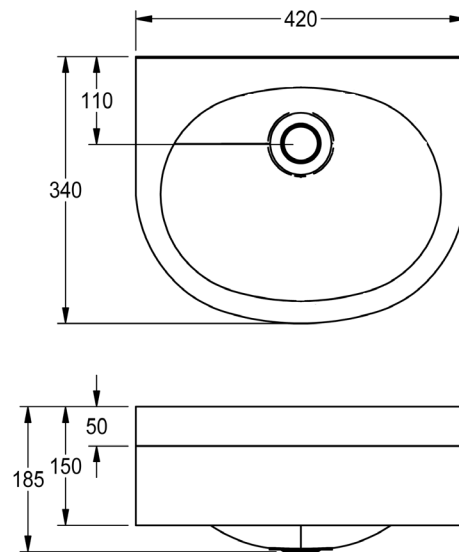
Product Code: 325304

..... OVAL A WASH HAND BASIN

..... WALL MOUNTED



TAP & FITTINGS NOT INCLUDED



..... FEATURES:

- Grade 304 (18/10) polished Stainless Steel, 1,2mm gauge
- Compact design suitable for wall mounting
- Basin with pressed bowl
- No brackets required, basin supplied with mounting plates
- Hygienic and vandal resistant

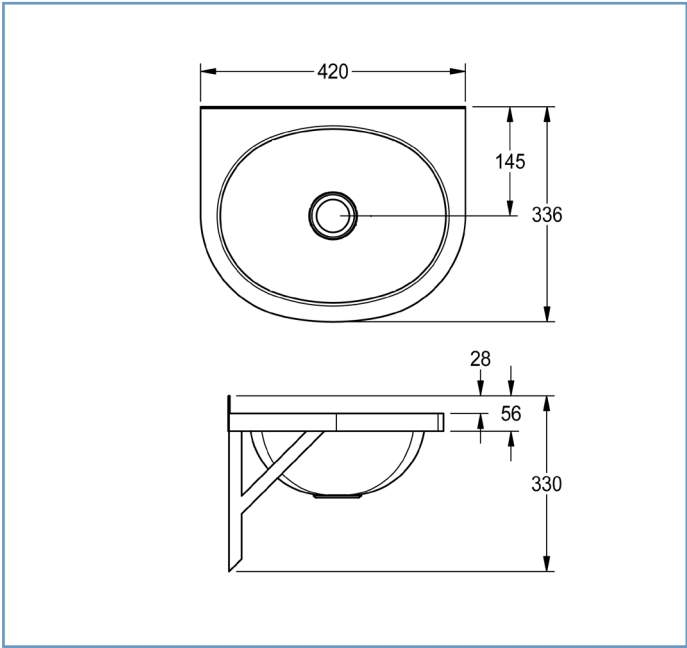
Product Code: 357456

..... SPECIFICATION:

Franke Model Oval A Wash Hand Basins, 420x340x185mm deep. Unit to be manufactured from Grade 304 (18/10) Stainless Steel, 1,2mm gauge. Unit to include a one piece pressed bowl, 360x280x130mm deep with a 40mm waste outlet, with a 50mm splashback and 100mm radiused apron. Basin to be fixed to the wall with 4 x 6mm anchor bolts (bolts elsewhere measured).

OVAL B WASH HAND BASIN

WALL MOUNTED



FEATURES:

- Grade 304 (18/10) polished Stainless Steel, 1,2mm gauge
- Compact design suitable for wall surface mounting
- Basin with pressed bowl
- Hygienic and vandal resistant

SPECIFICATION:

Franke Model Oval B Wash Hand Basins, 420x336x130mm deep. Unit to be manufactured from Grade 304 (18/10) Stainless Steel, 1,2mm gauge. Unit to include a one piece pressed bowl, 360x280x130mm deep with a 40mm waste outlet, with a 30mm splash back and 30mm radiused apron. Basin to be supplied with 20x20mm square mild steel (galvanised brackets) or Stainless Steel gallows brackets (optional, please specify). Basin to be fixed to the wall with 4 x 6mm anchor bolts (bolts elsewhere measured).

Optional Extras: (Please Specify)

- One or two tap holes punched
- Brackets in Stainless Steel or mild steel galvanised

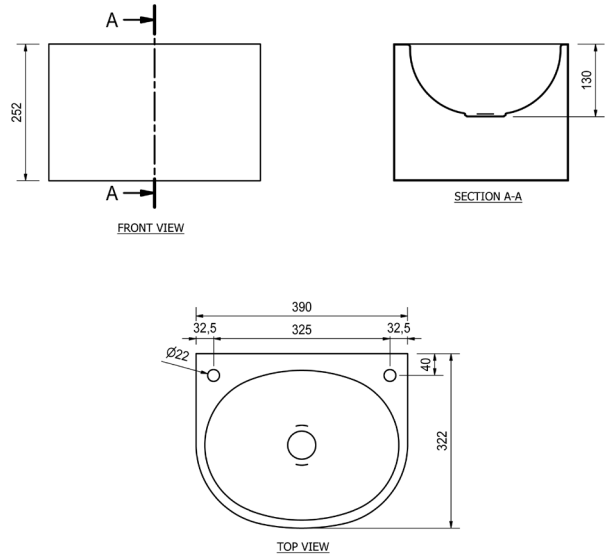
PRODUCT CODE	MODEL	DESCRIPTION
357455	OVAL B	basin only
357451	OVAL B	basin with mild steel galvanised brackets
357454	OVAL B	basin with Stainless Steel brackets

FSW & FSWSB HEAVY DUTY
SURROUND WASH HAND BASINS

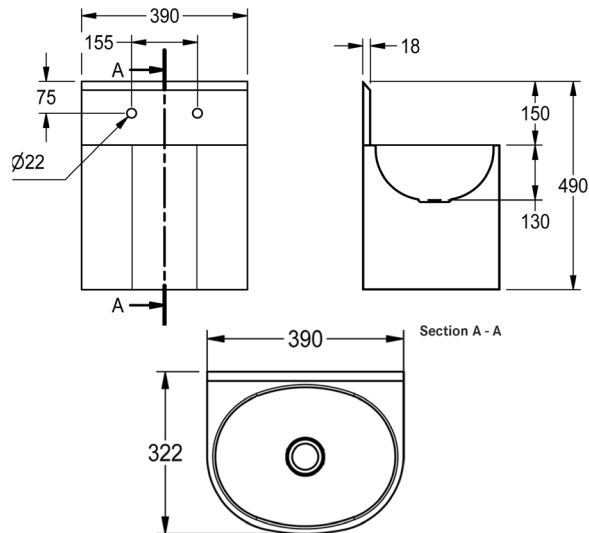
WALL MOUNTED



FSW
TAPS & FITTINGS NOT INCLUDED



FSWSB
TAPS & FITTINGS NOT INCLUDED



FEATURES:

- Grade 304 (18/10) polished Stainless Steel
- Heavy duty construction external surfaces of 1.2mm gauge
- Basin with pressed bowl
- Hygienic and vandal resistant
- 150mm splashback with tap holes (FSWSB Model)
- Provision for secured fixing to wall
- Concealed plumbing with removable base plate

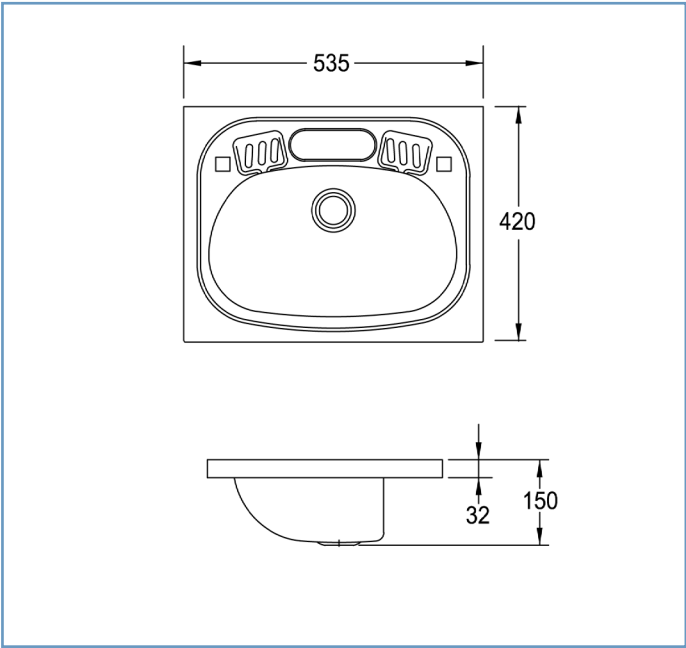
SPECIFICATION:

Franke Model... (please specify) Surround Wall Mount Basin, available without splashback (Model FSW) 390x320x250mm OR with a 150mm splashback (Model FSWSB). Unit to be manufactured from Grade 304 (18/10) Stainless Steel, 1.2mm gauge in a satin finish. Unit to include a pressed bowl 360x320x130 mm deep with a 40mm waste outlet and a polished outer casing with a removable base plate. Basin to be supplied with two 25 x 6mm fixing brackets to secure the basin to the wall. Fixing bracket fixed to the wall with 4 x 6mm anchor bolts (bolts elsewhere measured).

PRODUCT CODE	MODEL	DESCRIPTION
325306	FSW	basin only
325307	FSWSB	basin with splashback

WB001 WASH HAND BASIN

WALL MOUNTED



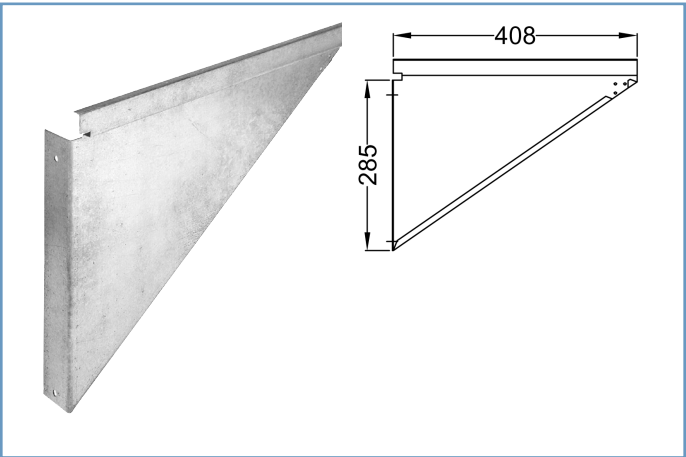
FEATURES:

SPECIFICATION:

- Basin one pieced pressed
- Hygienic and vandal resistant
- Available with optional tiling key
- High grade austenitic Stainless Steel
- Semi-pierced tap holes and soap recessors

Franke Model WB001 Wash Hand Basin, 535x420x150mm deep. Unit to be manufactured from a high grade austenitic Stainless Steel, 0,8mm gauge. Basin to include a pressed bowl 410x300x140mm deep with a 40mm waste outlet and 32mm apron all round. Unit to be fixed to wall with pair of galvanised mild steel Eagle Brackets (Optional - please specify). Optional Tiling Key (please specify).

PRODUCT CODE	MODEL	DESCRIPTION
325150	WB001	basin only
325000	WB001	basin with tiling key



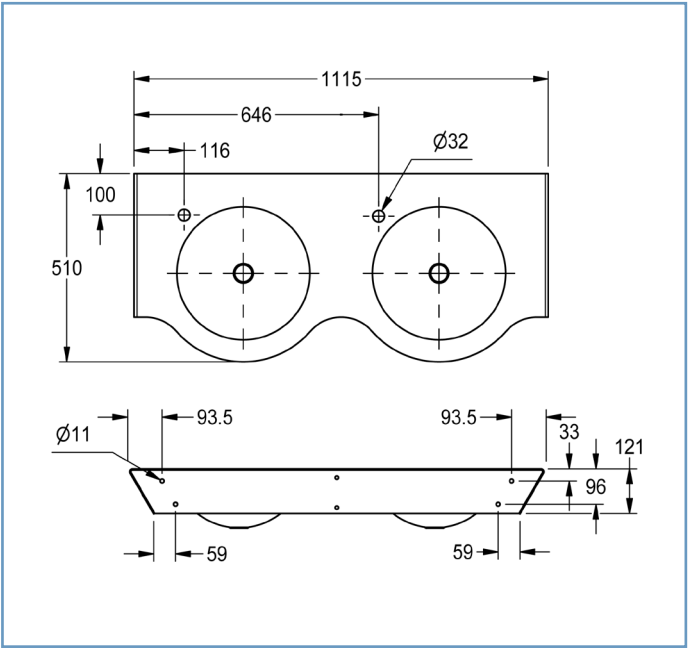
EAGLE BRACKET
Franke Model Eagle Brackets 408x319mm to be manufactured from galvanised mild steel with two 6mm holes to secure the unit to the wall. (Bolts elsewhere measured).

Product Code: 300351

STRATOS WASH HAND BASINS

RANGES

Designed for Hotels, Restaurants and Offices



FEATURES:

- Grade 304 (18/10) Stainless Steel
- Pressed bowls
- 3mm mounting bracket for reinforcement
- Upmarket design
- Satin finish with polished bowls
- The unit features an architecturally upmarket designed apron with a curved appearance.

SPECIFICATION:

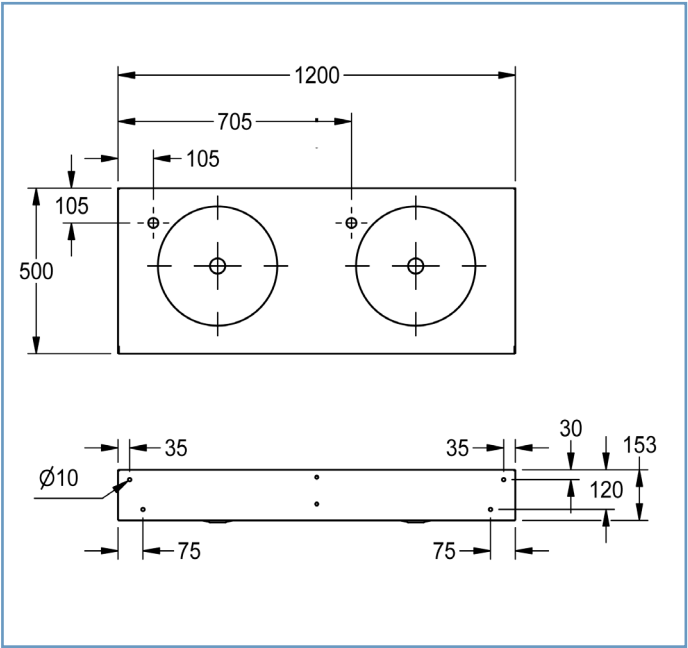
Franke Model STR...(please specify) Stratos Range of wash hand basin. Unit to be manufactured from Grade 304 (18/10) Stainless Steel, 3mm gauge (top) and bowls 1,2mm gauge. Size 360mm diameter x 150mm deep with 40mm waste outlets. Unit to be fixed to wall anchor bolts with 3mm Stainless Steel bracket for reinforcement. (Bolts elsewhere measured)

PRODUCT CODE	MODEL	DIMENSIONS
357162	STR02 range of two	1115 x 510 x 150mm
357161	STR03 range of three	1645 x 510 x 150mm

CHRONOS RANGE OF WASH HAND BASINS

RANGES

Designed for Shopping Centres, Filling Stations and Public Ablutions



FEATURES:

- Grade 304 (18/10) Stainless Steel
- Pressed Bowls
- 3mm mounting bracket for reinforcement.
- Upmarket design
- Satin finish with polished bowls
- Vandal proof and low maintenance

SPECIFICATION:

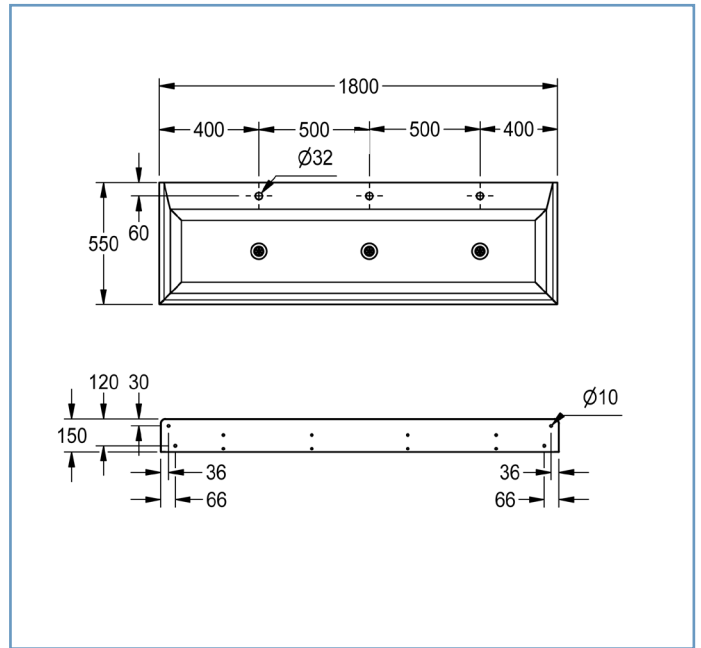
Franke Model CHR...(please specify) Chronos Ranges of wash Hand Basin. Unit to be manufactured from Grade 304 (18/10) Stainless Steel, 1,6mm gauge (top) and bowls 1,2mm gauge. Size 360mm diameter x 150mm deep with 40mm waste outlets. Unit to include a radius to the front and 100mm apron all round to conceal the bowl and the plumbing. Unit to be fixed to wall using rawl bolts with 3mm Stainless Steel bracket for reinforcement. (Bolts elsewhere measured)

PRODUCT CODE	MODEL	DIMENSIONS
356658	CHR02 range of two	1200 x 491 x 150mm
356721	CHR03 range of three	1800 x 491 x 150mm
356720	CHR04 range of four	2400 x 491 x 150mm

RANGES

A long, rectangular, stainless steel sink with three basins and three chrome faucets. The sink is shown from a slightly elevated, angled perspective. The basins are separated by low dividers. The faucets are modern, single-lever designs. The sink has a polished, reflective surface. The background is plain white.

TAPS & FITTINGS NOT INCLUDED



SPECIFICATION:

- Franke Model FB...(please specify) Flat Bed Wash Hand Basin. Unit to be manufactured from Grade 304 (18/10) Stainless Steel, 1,6mm gauge. Unit to include a 50mm deep trough like basin with 40mm waste outlets and 100mm apron all round. Basin to include outlets and tap holes evenly spaced and to be fixed to the wall with 3mm Stainless Steel bracket for reinforcement. (Bolts elsewhere measured).

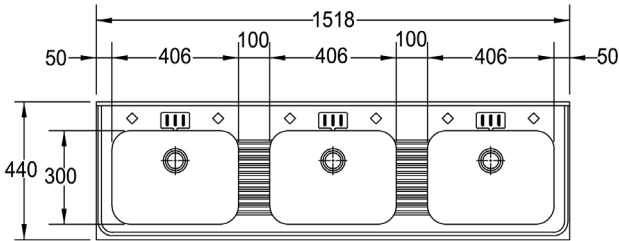
PAGE 29

RANGE OF WASH HAND BASINS

RANGES



TAPS & FITTINGS NOT INCLUDED



FEATURES:

- Grade 304 (18/10) Stainless Steel
- Hygienic and vandal resistant
- With or without splashback and tiling key
- Basin with pressed bowls
- Semi-pierced tap holes and soap recessors

SPECIFICATION:

Franke Model WB... (please specify) range of wash hand basins. Unit to be manufactured in Grade 304 (18/10) Stainless Steel, 0,9mm gauge with 25mm splashback and tiling key. Unit to include pressed bowls, 406x300x140mm deep with a 40mm waste outlets. Basin to be supplied with gallows brackets **OR** gallows brackets and front legs with adjustable foot piece (optional, please specify). Brackets to be fixed to the wall with anchor bolts (bolts elsewhere measured)

Optional extras:

Please refer to fixing table

300365 - Gallows brackets mild steel galvanised

300361 - Gallows brackets Stainless Steel

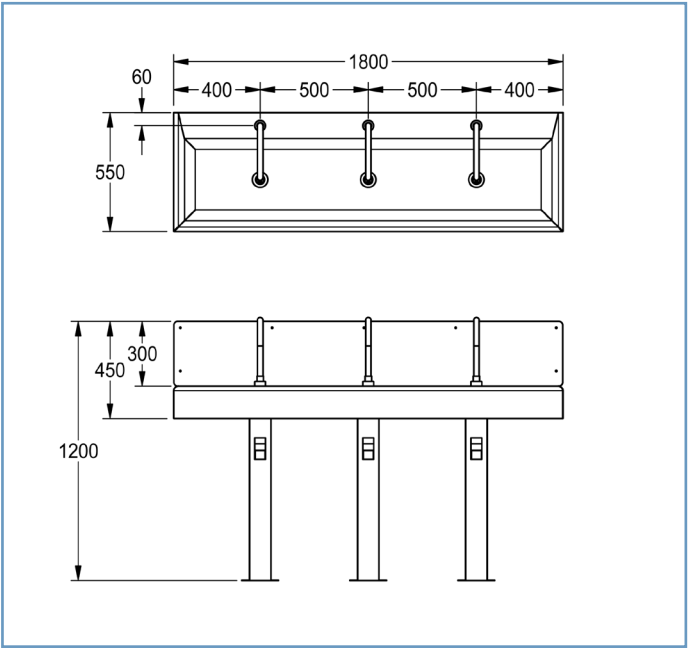
300364 - Gallows brackets and front leg mild steel galvanised

300363 - Gallows brackets and front leg Stainless Steel

PRODUCT CODE	MODEL	NO. OF BOWLS	LENGTH MM	WIDTH MM	BOWL DEPTH MM
359350	WB002	2	1012	430	140
359352	WB003	3	1518	430	140
359354	WB004	4	2024	430	140
359356	WB005	5	2530	430	140

CUSTOM MADE SLAB SINK WITH KNEE OPERATED VALVES

Designed for the Food Preparation and Manufacturing Industry Application, where hygiene is of the utmost importance.



FEATURES:

- Grade 304 (18/10) Stainless Steel, 1.6mm gauge
- Shallow trough basin 50mm
- 3mm mounting brackets for reinforcement.
- With 100mm apron all round
- Complete with 300mm Splash Back
- Maximum length must not exceed 2500mm

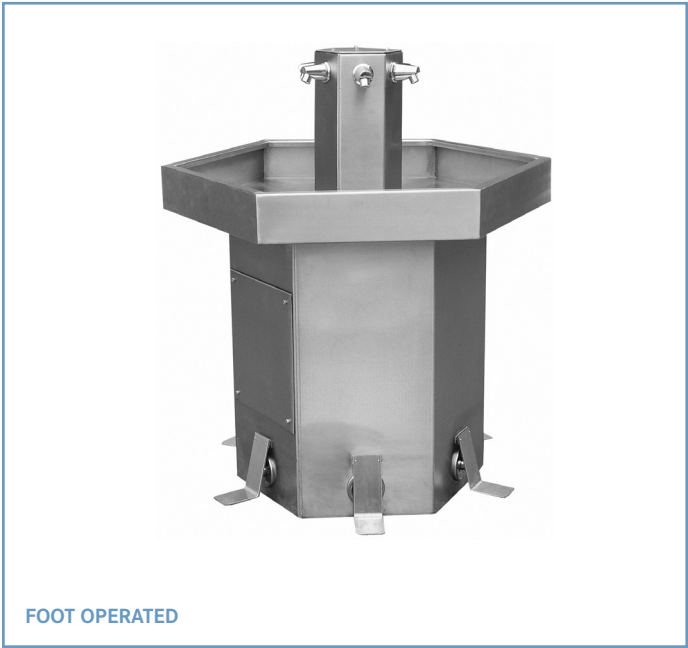
SPECIFICATION:

Franke Model SS...(please specify) Slab Sink. Unit to be manufactured from Grade 304 (18/10) Stainless Steel, 1,6mm thick, with a 300mm splash back. Sink includes a 50mm deep trough like basin with 40mm waste outlets, outlets and a hole for the pillar spout evenly spaced. Unit to be supplied with pedestals and knee operated pedals. Spout and valves optional (please specify), plumbing elsewhere measured. Unit to be fixed to the wall with 3mm Stainless Steel bracket for reinforcement. (Bolts elsewhere measured).

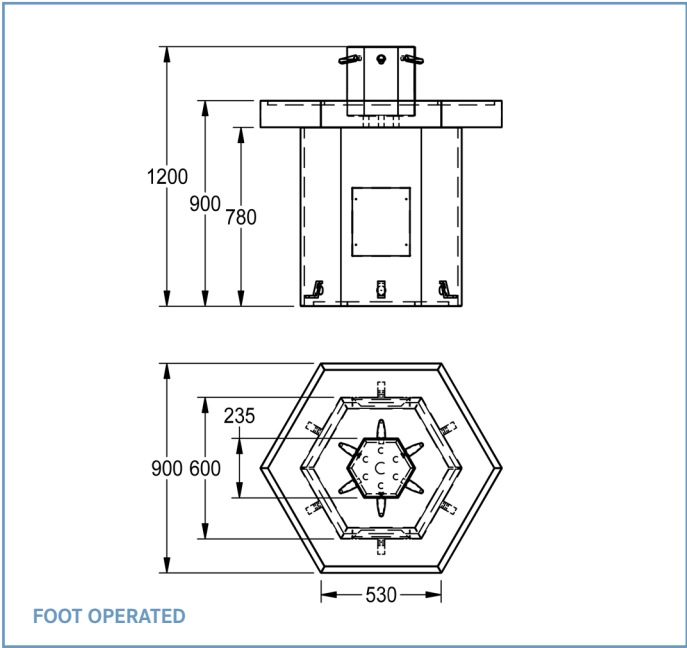
PRODUCT CODE	MODEL	DIMENSIONS
356663	SS18	1800 x 550 x 50mm
356704	SS24	2400 x 550 x 50mm

- Optional: (Not included)
- 359660 - Slab Sink Knee operated valve Cobra KM1.00
 - 359662 - Slab Sink Pillar Spout Cobra DA-006TUPT210

WASH FOUNTAIN AND BASIN (FOOT OR HAND OPERATED)



FOOT OPERATED



FOOT OPERATED

FEATURES:

- Manufactured in Grade 304 (18/10) Stainless Steel, 1.6mm gauge
- Individually hand or foot operated metering valves
- Fully plumbed up to single point internal inlet and waste connections
- Single waste outlet only
- Can accommodate up to six people simultaneously
- Highly accessible allowing ample full arm washing
- 120mm high apron to eliminate floor spillage
- Equipped with two easy accessible inspection panels to facilitate maintenance
- Floor fixing through reinforced Stainless Steel flat bar
- Space saving

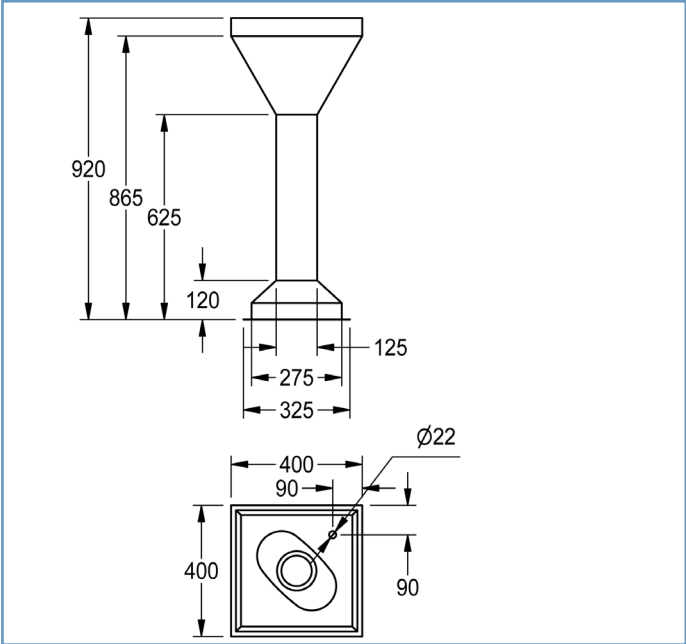
SPECIFICATION:

Hot & Cold water installation:
Franke Model WFF6 (foot-operated) or WFH6 (hand-operated) wash fountain and basin, 900x900x1200mm. Unit to be manufactured from Grade 304 (18/10) Stainless Steel, 1.6mm gauge. Unit to be fully plumbed up to 3/4" BSP cold water connection for a thermostatic mixing valve (thermostatic mixing valve elsewhere measured) for hot and cold water. Unit to be supplied with one 40mm C.P. on brass waste outlet connection.

Cold water installation only:
Franke Model WFF6 (foot-operated) or WFH6 (hand-operated) wash fountain and basin, 900x900x1200mm. Unit to be manufactured from Grade 304 (18/10) Stainless Steel, 1.6mm gauge. Unit to be fully plumbed up to 3/4" BSP cold water connection. Unit to be supplied with one 38mm C.P. on brass waste outlet connection.

PRODUCT CODE	MODEL	DIMENSIONS
352350	WFF6(Foot Operated)	900 x 900 x 1200mm
352400	WFH6(Hand Operated)	900 x 900 x 1200mm

DF PEDISTAL TYPE DRINKING FOUNTAIN



FEATURES:

- Manufactured from Grade 304 (18/10) Stainless Steel, 1,2mm gauge
- Free standing pedestal type drinking fountain
- Pressed bowl
- Removable top section
- Reinforced floor fixing flange.
- Available with a Carafe Spout or a Bubbler

SPECIFICATION:

Franke “DF” Pedestal Type Drinking Fountain 400x400x920mm high. Unit to be manufactured from Grade 304 (18/10) Stainless Steel, 1.2mm gauge. Unit to include a one piece pressed bowl with a 40mm waste outlet and removable top section. Unit to be supplied with a Bubbler OR Carafe Spout...(please specify). Unit to be supplied complete with a reinforced fixing flange. Unit to be fixed to floor with 10mm masonry bolts. (Bolts elsewhere measured).

Excludes Fittings and Plumbing.

PRODUCT CODE	MODEL	DIMENSIONS
352250	DF Drinking Fountain	400 x 400 x900mm

Optional:

PRODUCT CODE	MODEL
490107	Bubbler Kit
490108	Carafe Spout