

SECURITY PRODUCTS

Product Guide 2011

WASHROOM
SYSTEMS





Index

WC Pans, Squat Pans & Urinals	3 - 11
Introduction to WC Pans	3 - 5
HDTX592 - Standard Wall Hung Pan	6
HDTX594 - Wall Hung Pan for Disabled	7
HDTX597 Wall & Floor Mounted Shrouded Pan	8
HDTX850 Heavy Duty Combi Unit (Bolt Fixing Type)	9
Security Frame for HDTX850 Combi Unit	10
HDTX860 Heavy Duty Combi Unit (Push-fit/Bracket Fixing Type)	11
Squat Pan	12
SBE Barron Bowl Urinal (Security Type)	13
Wash Hand Basins	14 - 15
Combination Recessed Drinking Fountain & Wash Hand Basin	14
HDS & HDSSB Heavy Duty Surround Wash Hand Basins	15
Water Management	16 - 17
Aqualine-S AQUA205 Self Closing Bib Tap	16
Prison Type Shower Rose (Ceiling Type)	17
Other Franke Products	18 - 19
Specialised Mortuary Equipment	20
Certificates & Test Compliance	21 - 22

WC Pans



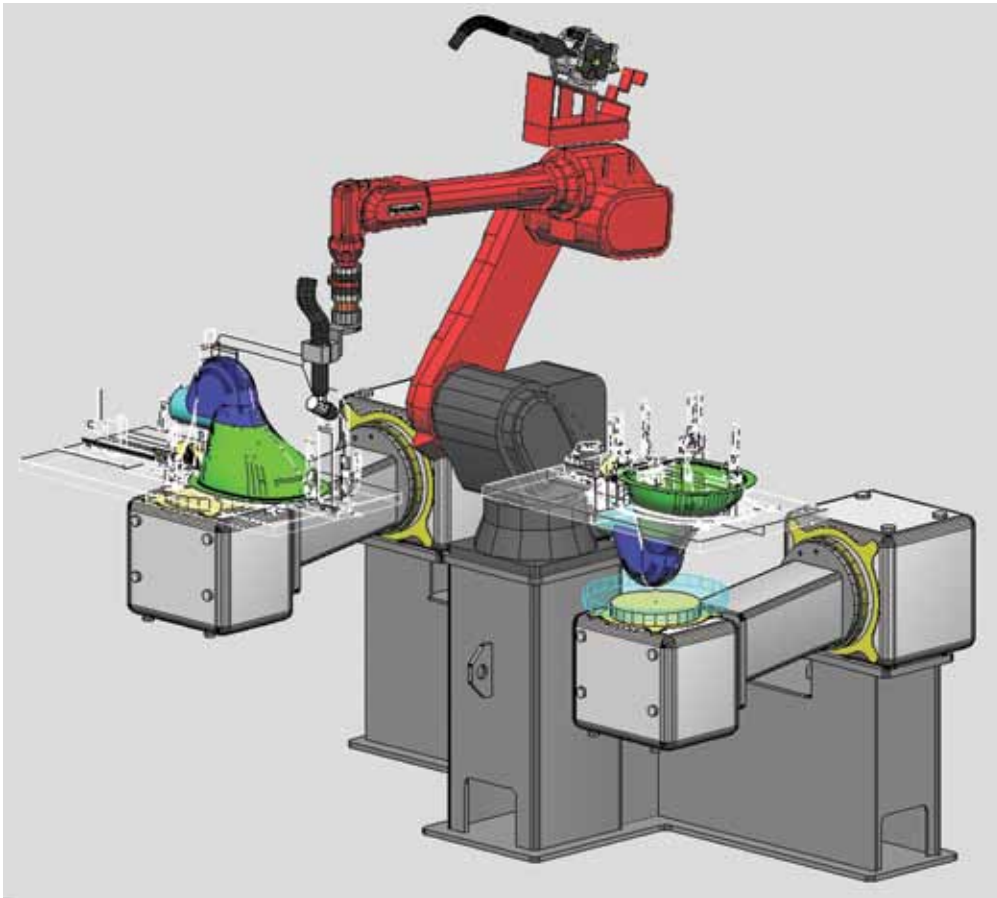
FRANKE WC PANS ARE DESIGNED TO REDUCE WATER CONSUMPTION BY UP TO 60%

WC Pans consume up to 90 percent of water usage in commercial buildings. New technology has been introduced to produce a new range that delivers high performance and aesthetically pleasing designs, to compliment the rest of the Franke sanitary ware products. Designed for ultimate hygiene solutions and ease of installation in public ablutions, the range caters for a wide variety of applications, from recreational facilities, shopping centres, petrol stations, airports and stadiums.

Product features:

- Hygienic, quality designs and excellent low water consumption
- Aesthetically pleasing design, with satin finish
- Pressed bowl and P-trap, with minimal welding through robotic welding technology
- Full flush of 4 or 6 litres
- Sturdy design and safety compliant with low maintenance compared with ceramic and composite materials
- Internationally approved accreditation (Refer to accreditations - Page 5)

Introduction To WC Pans



PLASMA CUTTING & MIG WELDING OF WC PAN ASSEMBLY

Franke South Africa invested in new technology since 2004 to enhance its export activities into Europe, Australia, New Zealand and Africa.

The new range of Stainless Steel wall hung pans is aesthetically pleasing and no longer limited to security applications.

Stainless Steel does not crack or chip and as such has a low replacement rate. Raised above the floor the new range of wall hung pans facilitates easier cleaning around the pan resulting in improved hygiene.

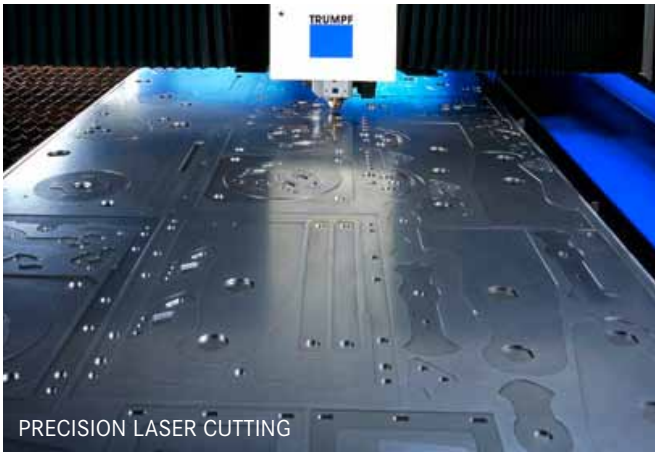
Each WC pan is pickled and passivated to prevent corrosion on welds.

Quality assurance . Each WC pan is tested to ensure that it complies with international standards. The Franke South Africa factory complies with ISO 9001:2008 Quality Management Standards.

ISO Certificate : Page 21

Capital Invested Technology

The enhanced style and finishes have been achieved through a series of investment technologies.



Laser Technology

With the detailed precision, narrowest heat-affected zone and spot-on accuracy produced by advanced laser systems, we can provide the highest quality, intricate and detailed products.

Deep Drawing and Annealing

Deep drawing involves the use of metal dice to form blank sheets of metal into a desired shape thus reducing the need to weld components together. Deep drawing produces products that are significantly stronger and lighter. It also allows for a much smaller risk of error, consistent quality and a more predictable end product in a shorter period of time.



Robot Welding

Robot welding is the use of mechanised programmable tools (robots), which completely automate a welding process by both performing the weld and handling of the part. The automated process that robotic welding brings to steel fabrication provides much higher consistency and repeatability of quality welds. Robotic welding is used to ensure that each Pan conforms with the highest quality standards.

Water Conservation and Quality Assurance (Page 22)

Each Franke WC pan complies with the following SABS standard:
SABS 1733: 2002

Each Franke WC pan complies with the following international standards :

LGA DIN EN 997: 2008-03: paper removal test

LGA DIN EN 997: 2008-03: 6 litre flushing test – solids and urine

LGA DIN EN 997: 2008-03: 4 litre flushing test – solids and urine



HDTX592 - HEAVY DUTY Wall Hung Pan



Specification

Franke Model HDTX592 Stainless Steel wall hung WC pan. Manufactured from Grade 304 (18/10) Stainless Steel, 360x550x350mm. Pan to be manufactured with a shroud with corner mounting gussets and 17mm nuts and to be supplied with galvanised mild steel threaded rods for securing the pan through the wall. Compliant with SABS 1733:1998 and SABS 497:1991 WC pan to flush with 4 and 6 litres of water. Pan to withstand point load of 400kg as per international standards. Optional seat available (please specify).

Features

- Grade 304 (18/10) polished Stainless Steel
- Hygienic and vandal resistant
- Pressed components to ensure consistent quality and performance
- 4 or 6 litres flushing
- Heavy duty outer casing conceals the plumbing
- The WC pan is fixed to the wall bracket with galvanised mild steel threaded rods.
- Wall hung pans are designed to accommodate:
 - Back entry inlet to suit 38mm flush pipe connection for a Flush Valve or
 - Designed to fit onto a concealed flushing system

Product code (excluding seat) (please specify)

PRODUCT CODE	MODEL	DIMENSIONS LXDHX	INLET
356109	HDTX592	360x550x350mm	Back Entry

Water conservation and Quality assurance

Complies with SABS and LGA DIN EN International Standards. Please refer to Page 5 for details.

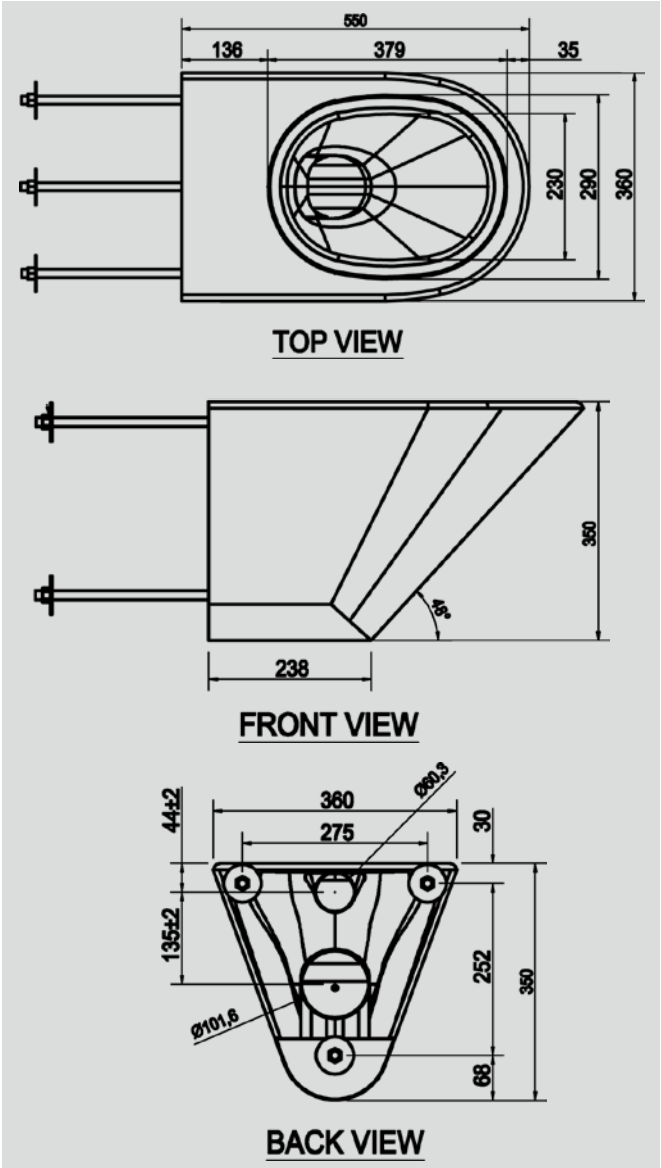
AST1172 - Watermark Certification (Page 22)

Accessories

Optional Toilet Seats available (Please specify)

If required, seat must be specified with WC Pan.

PRODUCT CODE	DESCRIPTION
356069	Wooden seat or
356053	Heavy duty plastic seat (Black) or
356049	Wooden slat



HDTX594 - HEAVY DUTY Wall Hung Pan for Disabled



Specification

Franke Model HDTX594 Stainless Steel wall hung WC pan. Manufactured from Grade 304 (18/10) Stainless Steel, 360x700x350mm. Pan to be manufactured with a shroud with corner mounting gussets, and 17mm nuts and to be supplied with galvanised mild steel threaded rods for securing the pan through the wall. Compliant with SABS 1733:1998 and SABS 497:1991 WC pan to flush with 4 and 6 litres of water. Pan to withstand point load of 400kg as per international standards. Optional seat available (please specify).

Features

- Grade 304 (18/10) polished Stainless Steel
- Hygienic and vandal resistant
- Pressed components to ensure consistent quality and performance
- 4 or 6 litres flushing
- Heavy duty outer casing conceals the plumbing
- The WC pan is fixed to the wall bracket with galvanised mild steel threaded rods.
- Wall hung pans are designed to accommodate:
 - Back entry inlet to suit 38mm flush pipe connection for a Flush Valve or
 - Designed to fit onto a concealed flushing system

Product code (excluding seat) (please specify)

PRODUCT CODE	MODEL	DIMENSIONS LXDXH	INLET
356116	HDTX594	360x700x350mm	Back Entry

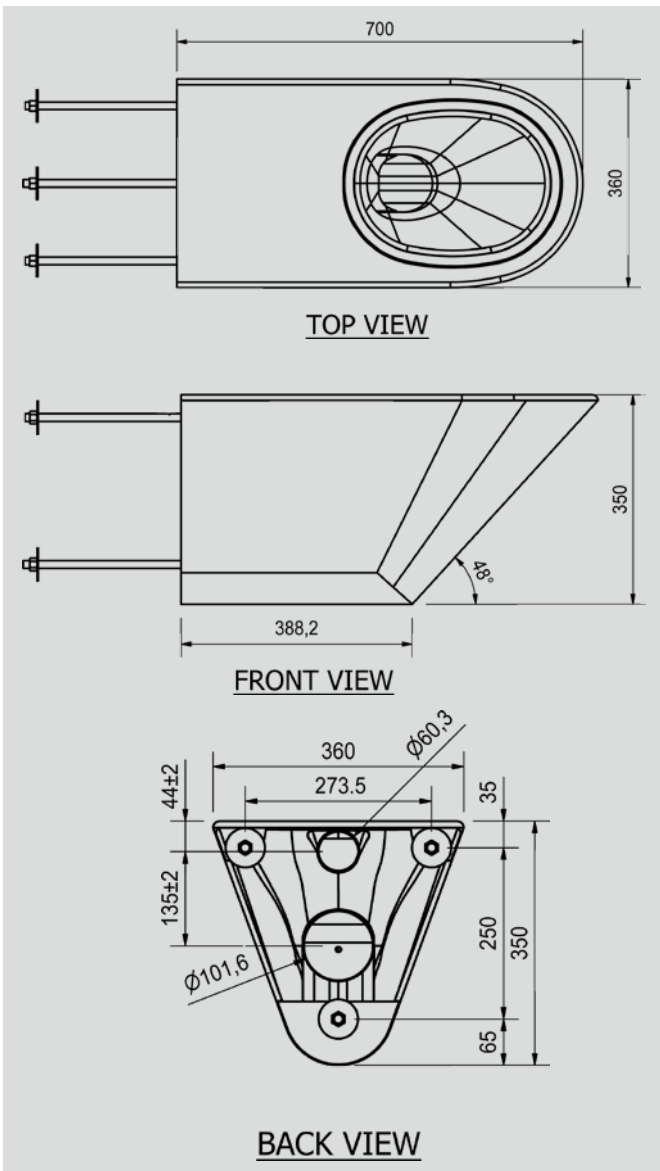
Water conservation and Quality assurance

Complies with SABS and LGA DIN EN International Standards. Please refer to Page 5 for details.

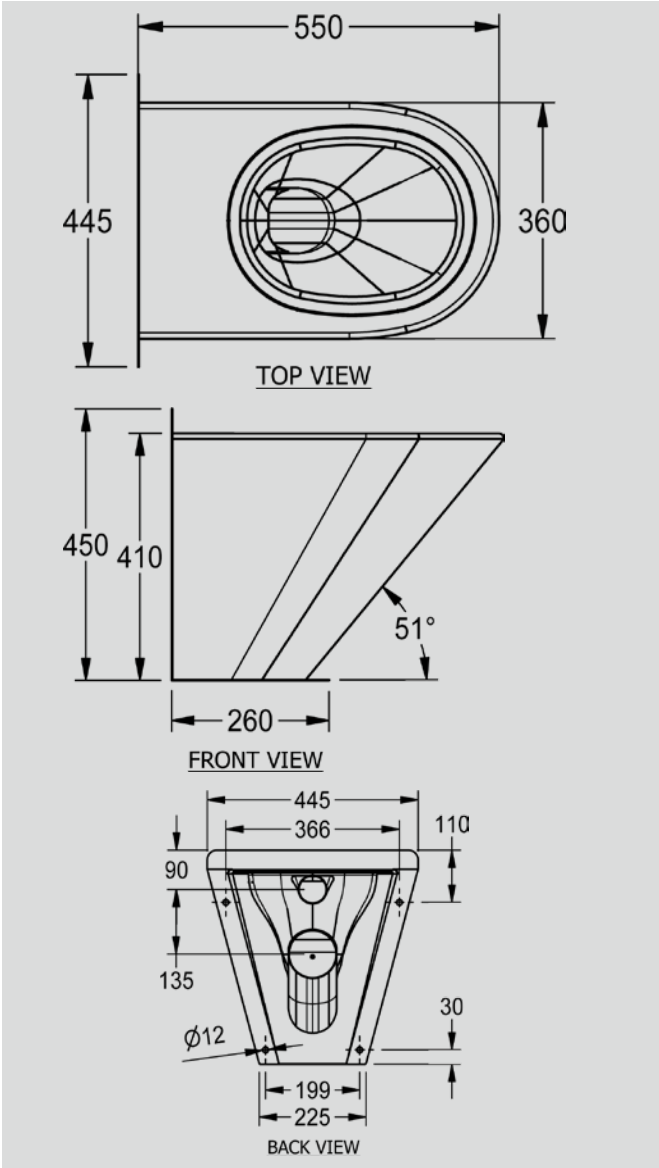
Accessories

Optional Toilet Seats available (Please specify)
If required, seat must be specified with WC Pan.

PRODUCT CODE	DESCRIPTION
356069	Wooden seat or
356053	Heavy duty plastic seat (Black) or
356049	Wooden slat



HDTX597 Wall and Floor Mounted Shrouded WC Pan



Specification

Franke Model HDTX597 Heavy Duty Wall and Floor Mounted WC Pan 360x550x410mm high. Unit to be manufactured from Grade 304 (18/10) Stainless Steel 1,2mm gauge. Unit to be manufactured with a pressed flushing rim and integral “P” Trap with a 100mm outlet pipe and a 60mm back entry inlet pipe to suit a rubber flush inlet sealing bung. Pan to be manufactured with a shroud, with internal or external flanges...(please specify) for securing the pan through the wall and into floor with anchor bolts. (Bolts elsewhere measured). Compliant with SABS 1733:1998 and SABS 497:1991 WC pan to flush with 4 and 6 litres of water. Pan to withstand point load of 400kg as per international standards.

Optional Extra:

Inlet and outlet pipes extended to 250mm.

Features

- Grade 304 (18/10) Stainless Steel 1.2mm gauge
- Hygienic and vandal resistant
- Pressed components to ensure consistent quality and performance
- 4 or 6 litres flushing
- Heavy duty outer casing conceals the plumbing
- Pressed flushing rim
- Provision for secured fixing through wall and into floor
- Optional provision for seat or wooden slats
- Optional outlet and flush inlet pipes are available, which can be shortened/lengthened to suit plumbing
- Sub-assembly of pan is pickled and passivated to prevent corrosion

Product code

PRODUCT CODE	MODEL	DESCRIPTION
356082	HDTX 597	with external flanges (wall and floor)
356117	HDTX 597	with external flanges with 250 mm long extended pipes
356086	HDTX 597	with internal flanges (wall and floor)
356118	HDTX 597	with internal flanges with 250 mm long extended pipes

Water conservation and Quality assurance

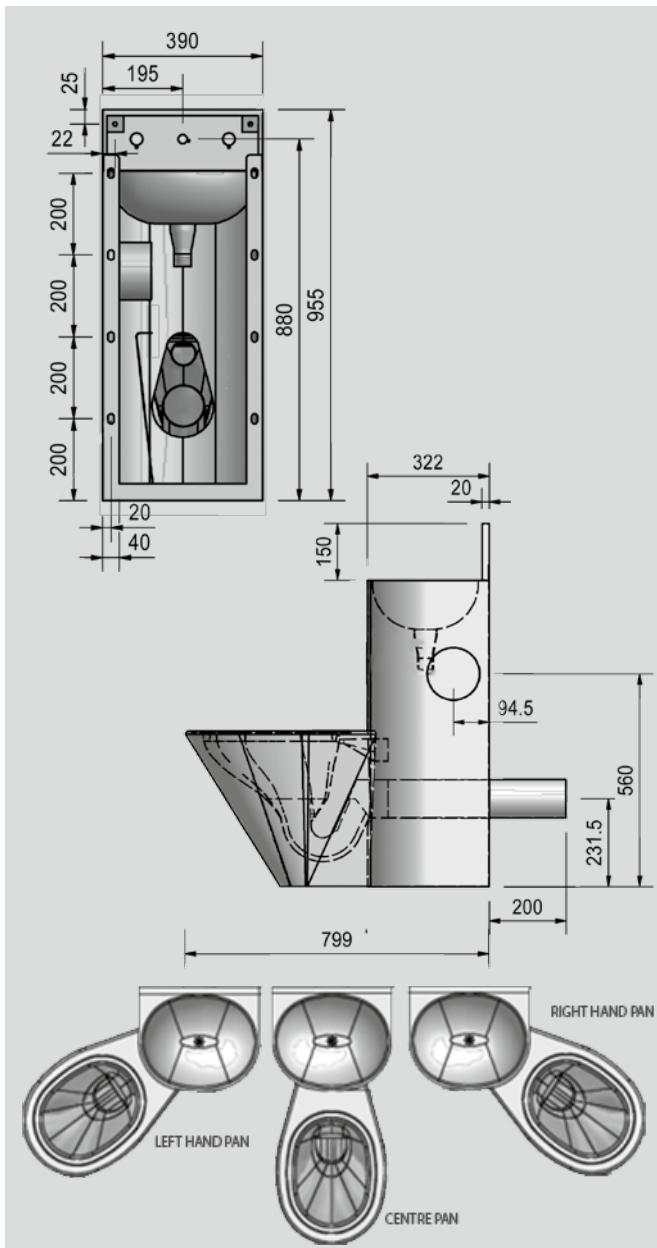
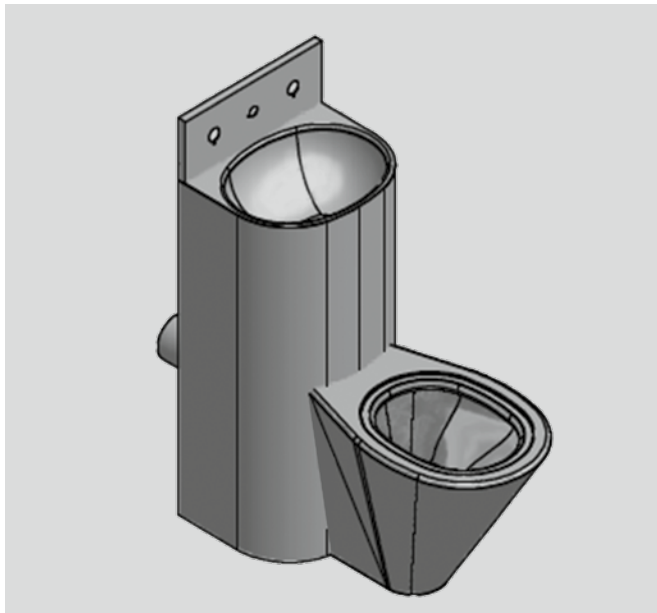
Complies with SABS and LGA DIN EN International Standards. Please refer to Page 5 for details.

Accessories

Optional Toilet Seats available (Please specify)
If required, seat must be specified with WC Pan.

PRODUCT CODE	DESCRIPTION
356069	Wooden seat or
356053	Heavy duty plastic seat (Black) or
356049	Wooden slat

HDTX850 Heavy Duty Combi Unit (Bolt Fixing Type)



Specification

Franke Model HDTX850 Bolt Fix Combination WC Pan and Wash Hand Basin, 390x322x955mm high. Unit to be manufactured from Grade 304 (18/10) Stainless Steel, 1,2mm gauge pan and basin, with 1,6mm gauge pedestal. Unit to be supplied complete with an integrated wash hand basin with a pressed perforated outlet to suit a 40mm waste fitting, and 150mm high splash back with a provision for the basin spout and push buttons for the flush valves which must be installed in the duct behind the unit. Pan to be positioned to the left, right or centre...(please specify). The pedestal of the unit to be manufactured with a built-in toilet roll holder (optional...please specify) and flanges with fixing slots for 8mm threaded rods to secure the unit through the wall (Threaded rods elsewhere measured). Compliant with SABS 1733:1998 and SABS 497:1991 WC pan to flush with 4 and 6 litres of water. Pan to withstand point load of 400kg as per international standards.

Features

- Grade 304 (18/10) polished Stainless Steel
- Hygienic pan cannot chip or crack
- Designed for the highest level of anti-vandal resistance
- Heavy duty construction pedestal 1,6mm and pan 1.2mm gauge
- Integral wash hand basin
- Space saving
- Pan position can be left, right or centre
- One pieced pressed bowl
- Supplied with plumbing fitting (optional extra).

Product code

Combi Units without Toilet Roll holders:

PRODUCT CODE	DESCRIPTION
356147	Combi Unit with Centre Pan
356148	Combi Unit with Left Hand Pan
356149	Combi Unit with Right Hand Pan

Combi Units with Toilet Roll holders:

PRODUCT CODE	DESCRIPTION
356151	Combi Unit with Right Hand Pan
356152	Combi Unit with Left Hand Pan
356153	Combi Unit with Centre Pan

Water conservation and Quality assurance

Complies with SABS and LGA DIN EN International Standards. Please refer to Page 5 for details.

Accessories

Optional Installation Accessories:

Product code: 356017

Galvanised Mild steel Security Frame with anti-escape bars. (frame built into the brick work behind the unit).

Optional Plumbing Fittings:

Product code: 825010

1 x Basin Valve (Cobra - KM1-00F) , 1 x Toilet Valve (Cobra FJ 4-203F), 1 x Flexible Hose (Walcro 15mm x 600mm) and 1 x Spout (Walcro - CIRS Spout Basin 15mm)

Security Frame For HDTX850 Combi Unit



Specification

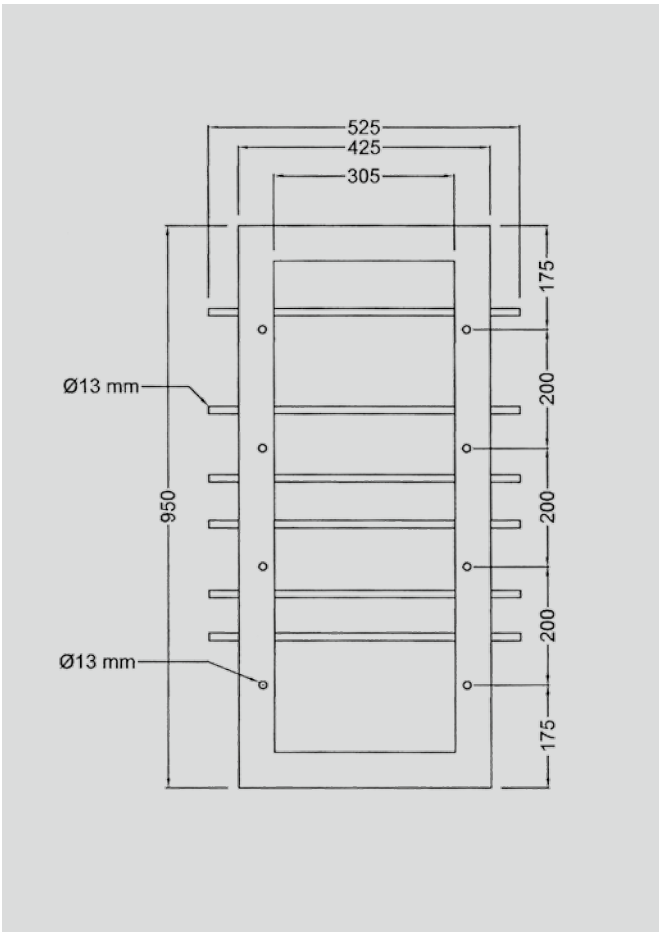
Franke Security Frame for HDTX850 Combi Unit. Unit to be manufactured from galvanised mild steel, 525mmx950mm wall sleeve with 6 x 13mm Ø anti-escape bars, positioned to allow access to the inlet and outlet. Unit to be built into brick-work and combi unit to then be mounted to the unit.

Features

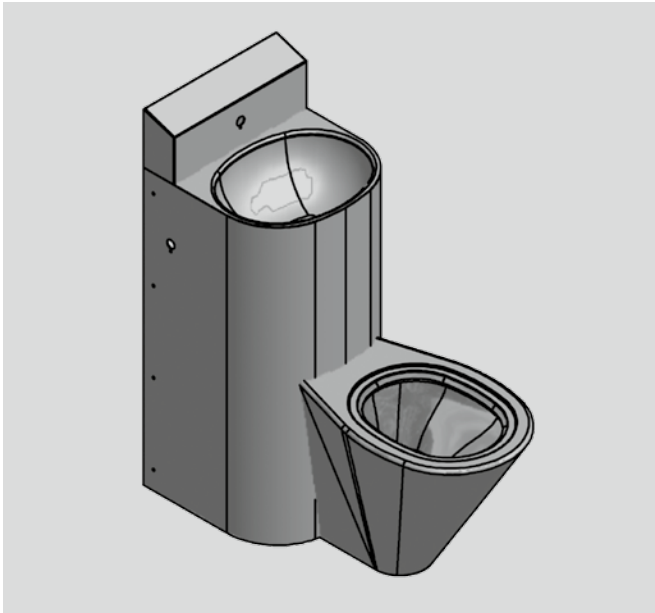
- Galvanised mild steel, 1.6mm gauge
- Designed for HDTX850 Combi Unit
- Designed for the highest level of anti-vandal resistance
- Frame built into brick-work behind the combi unit

Product code

356017



HDTX860 Heavy Duty Combi Unit (Push-Fit/Bracket Fixing Type)



Specification

Franke Model HDTX860 Push Fit Combination WC Pan and Wash Hand Basin 390x400x955mm high. Unit to be manufactured from Grade 304 (18/10) Stainless Steel, 1,2mm gauge pan and basin, with 1,6mm gauge pedestal. Unit to be supplied complete with an integrated wash hand basin, with a pressed perforated outlet to suit a 40mm waste fitting and 150mm high splash back with a provision for the basin spout. Pan to be positioned to the left, right or centre...(please specify). The pedestal of the unit to be manufactured with a built-in toilet roll holder (optional...please specify) and eight 6mm slots and security screws to secure the unit to the wall mounting frame. Pedestal with provision for push buttons for the flush valves which is installed in the unit. The Stainless Steel wall mounting frame to be 3mm thick with eight nutserts and to be fixed to the wall with anchor bolts (bolts elsewhere measured).

Compliant with SABS 1733:1998 and SABS 497:1991 WC pan to flush with 4 and 6 litres of water. Pan to withstand point load of 400kg as per international standards.

Features

- Grade 304 (18/10) polished Stainless Steel
- Hygienic pan cannot chip or crack
- Designed for the highest level of anti-vandal resistance
- Heavy duty construction pedestal 1,6mm and pan 1.2mm gauge
- Integral wash hand basin
- Space saving
- Pan position can be left, right or centre
- One pieced pressed bowl
- Supplied with plumbing fitting (optional extra).

Product code

Combi Units without Toilet Roll holders:

PRODUCT CODE	DESCRIPTION
356133	Combi Unit with Centre Pan
356134	Combi Unit with Left Hand Pan
356135	Combi Unit with Right Hand Pan

Combi Units with Toilet Roll holders:

PRODUCT CODE	DESCRIPTION
356154	Combi Unit with Right Hand Pan
356155	Combi Unit with Left Hand Pan
356156	Combi Unit with Centre Pan

Water conservation and Quality assurance

Complies with SABS and LGA DIN EN International Standards. Please refer to Page 5 for details.

Accessories

Optional Installation Accessories:

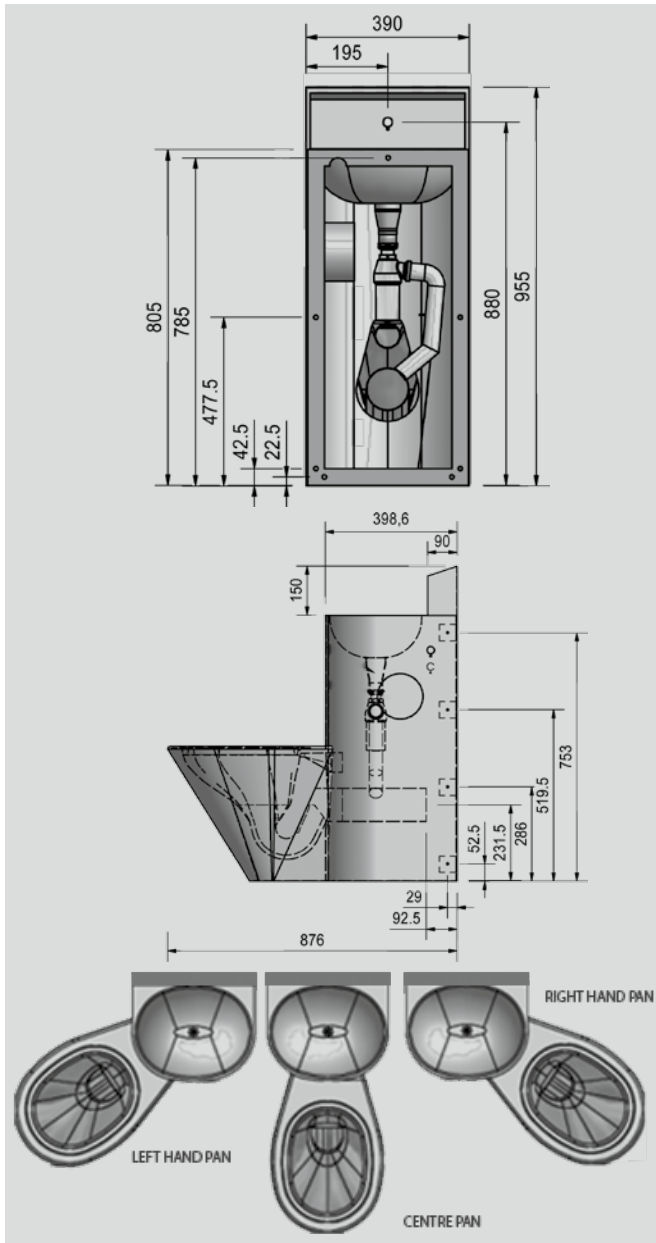
Product code: 356017

Galvanised Mild steel Security Frame with anti-escape bars. (frame built into the brick work behind the unit).

Optional Plumbing Fittings:

Product code: 825010

1 x Basin Valve (Cobra - KM1-00F) , 1 x Toilet Valve (Cobra FJ 4-203F), 1 x Flexible Hose (Walcro 15mm x 600mm) and 1 x Spout (Walcro - CIRS Spout Basin 15mm)



Squat Pans



Specification

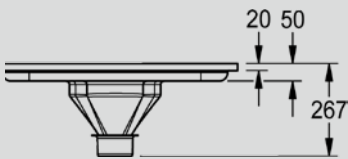
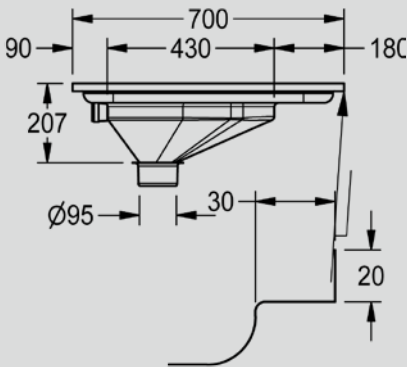
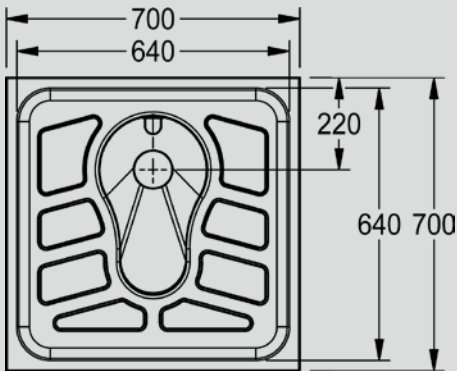
Franke Security Frame for HDTX850 Combi Unit. Unit to be manufactured from galvanised mild steel, 525mmx950mm wall sleeve with 6 x 13mm Ø anti-escape bars, positioned to allow access to the inlet and outlet. Unit to be built into brick-work and combi unit to then be mounted to the unit.

Features

- Grade 304 (18/10) Stainless Steel, 1.2mm gauge
- Hygienic pan cannot chip or crack
- Designed for the highest level of anti-vandal resistance
- Heavy duty construction external surfaces 1.2mm gauge
- Fully pressed design with raised tread plates
- Concealed back entry flush pipe inlet suitable for surface mounted or concealed flush valves, low or high level cisterns
- Supplied with flushing spreader
- Flushes with 9 Litres Low Level Cistern

Product code

PRODUCT CODE	DIMENSIONS (LxW)	DESCRIPTION
356014	700x700mm	Squat Pan with 20 mm turn up all round
356013	740x740mm	Squat Pan with 20 mm turn up and flange all round



SBE Barron Bowl Urinal (Security Type)



Specification

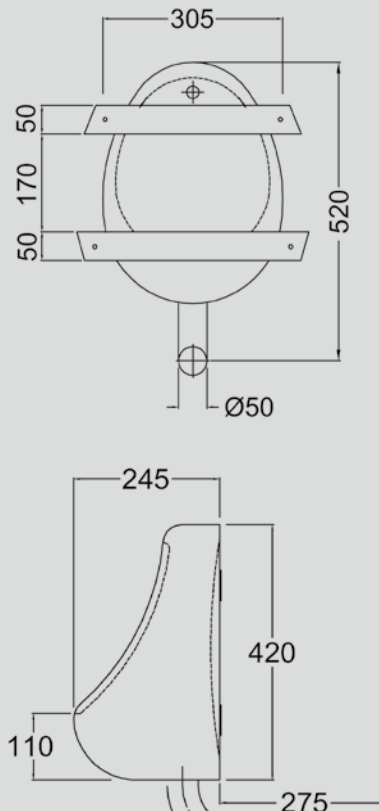
Franke Model SBE (Back Entry Inlet) Security Barron Bowl Urinal, 316x425x241mm. Unit to be manufactured from Grade 304 (18/10) Stainless Steel, 1,2mm gauge. Unit to be supplied complete with a perforated waste outlet, with a 50mm diameter Stainless Steel outlet pipe which extends 250mm through the back wall. Bowl to be fitted with two security type mounting brackets for fixing with 4xM8 rawl bolts for mounting to the wall. (bolts elsewhere measured).

Features

- Grade 304 (18/10) Stainless Steel
- Heavy duty construction external surfaces of 1.2mm gauge Stainless Steel
- Provision for secured fixing to wall
- Back entry perforated outlet to suit standard 50mm waste pipe connection

Product code

333261



Combination Recessed Drinking Fountain & Wash Hand Basin



Specification

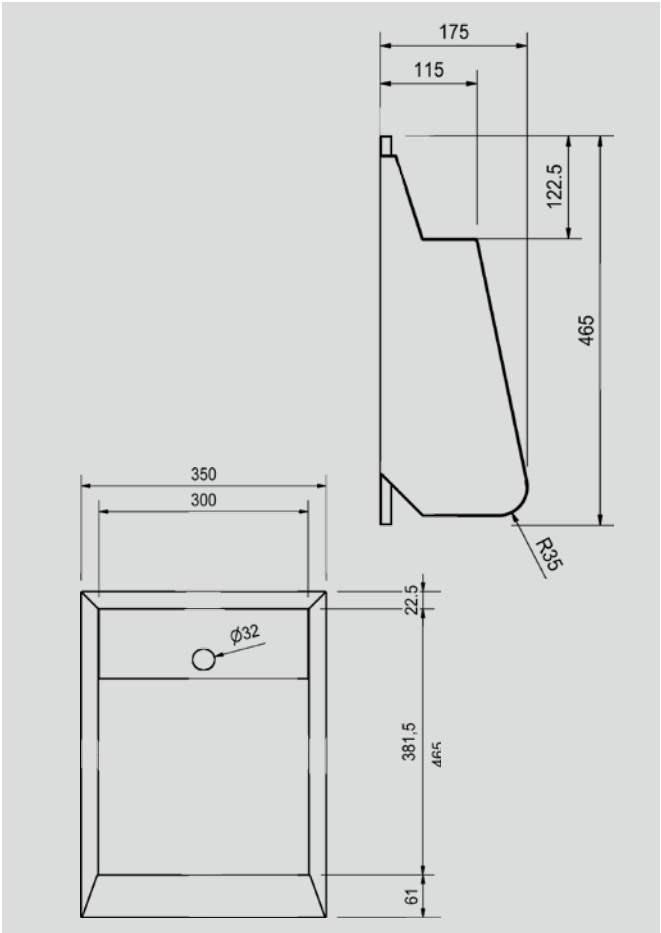
Franke Combination Wash Hand Basin & Drinking Fountain, 350mmx465mm. Unit to be manufactured from Grade 304 (18/10) Stainless Steel, 1,2mm gauge. Unit to be manufactured as a welded construction. Unit to be recessed 175mm into the wall with a 40mm concealed waste outlet. Basin to be fitted with a self closing metering bib tap at the top of the unit with fixing lugs to secure the basin into the wall. Unit to be supplied with a Walcro 101 metering tap.

Features

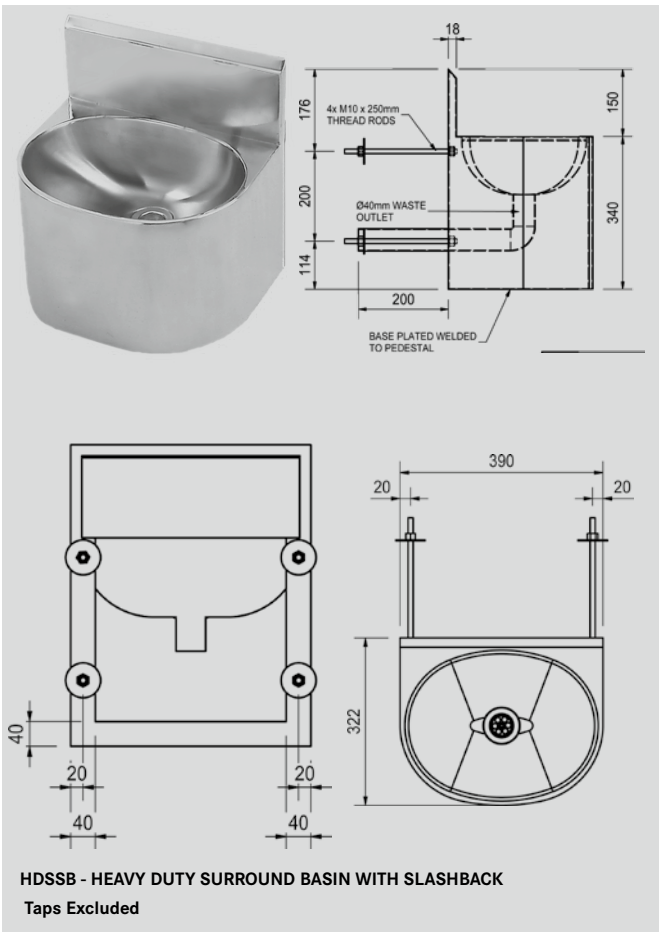
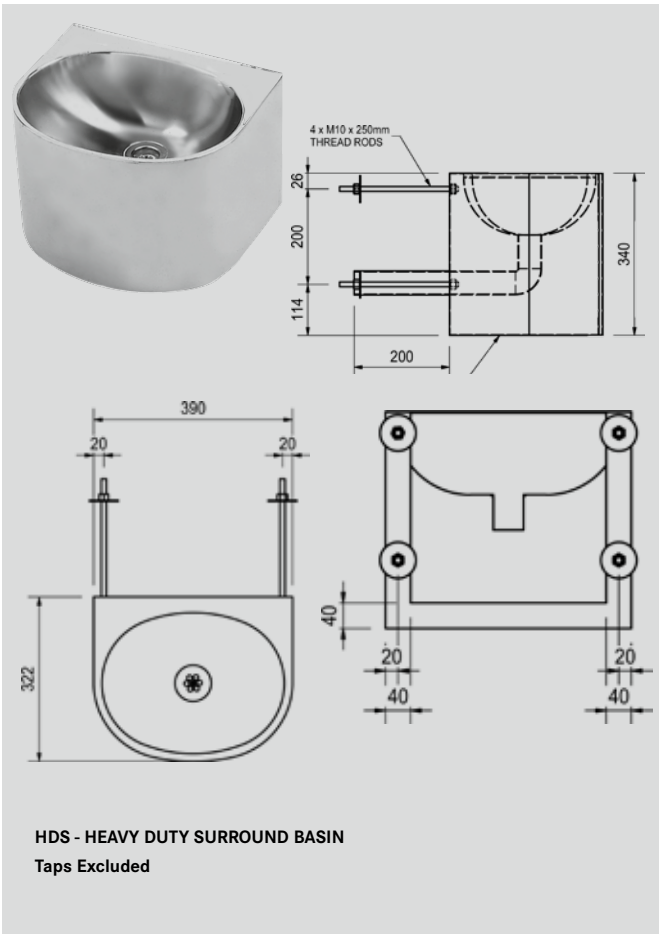
- Manufactured from Grade 304 (18/10) Stainless Steel
- Vandal proof
- Unit suitable for plastered and face brick walls
- Basin recessed into the wall
- Application: installed in cells of Prisons & Police Stations
- No crevices, fully welded construction.
- All plumbing built into the wall and therefore unexposed
- Fitted with a self-closing metering tap.

Product code

PRODUCT CODE	MODEL	DIMENSIONS LXDxH
359206	Drinking Fountain & WHB	350x465x175mm



HDS & HDSSB Heavy Duty Surround Wash Hand Basins



Specification

HDS - HEAVY DUTY SURROUND BASIN (Security Type)

Franke Model HDS Surround Wall Mount Basin, 390x320x250mm. Unit to be manufactured from Grade 304 (18/10) Stainless Steel, 1.2mm gauge. Unit to be manufactured with a pressed bowl 360x280x140mm deep and an outer casing with a welded base plate. Basin to be supplied complete with a pressed perforated waste outlet, with a 50mm diameter Stainless Steel outlet pipe which extends 250mm. Unit to be supplied with four x 8mm diameter x 250mm long galvanised mild steel treaded rods for fixing the basin to the wall.

HDSSB - HEAVY DUTY SURROUND BASIN (Security Type with Splash Back)

Franke Model HDSSB Surround Wall Mount Basin, 390x320x250mm, with a 150mm splash back. Unit to be manufactured from Grade 304 (18/10) Stainless Steel, 1.2mm gauge. The unit to be manufactured with a pressed bowl 360x280x140mm deep and an outer casing with a welded base plate. Basin to be supplied complete with a pressed perforated waste outlet, with a 50mm diameter Stainless Steel outlet pipe which extends 250mm. Unit to be supplied with four x 8mm diameter x 250mm long galvanised mild steel treaded rods for fixing the basin to the wall.

Features

- Grade 304 (18/10) polished Stainless Steel
- Heavy duty construction external surfaces of 1.2mm gauge
- Basin with pressed bowl
- Hygienic and vandal resistant
- 150mm splashback with tap holes (HDSSB Model)
- Provision for secured fixing to wall
- Fully enclosed with concealed plumbing and extended Stainless Steel outlet through wall
- Heavy duty construction external surfaces of 1.2mm gauge Stainless Steel
- Back entry perforated outlet to suit standard 50mm waste pipe connection

Product code

PRODUCT CODE	MODEL	DESCRIPTION
325317	HDS	basin only
325318	HDSSB	basin with splashback

AQUALINE-S AQUA205 Self Closing Bib Tap



Specification

Franke Model Aqualine-S AQUA205 Self Closing Bib Tap. Unit to be manufactured from polished chrome plated brass with angled outlet and aerator with flow straightener. Unit to be complete with self closing functional cartridge, with automatic and backlash free closure and adjustable flow duration.

Technical specifications

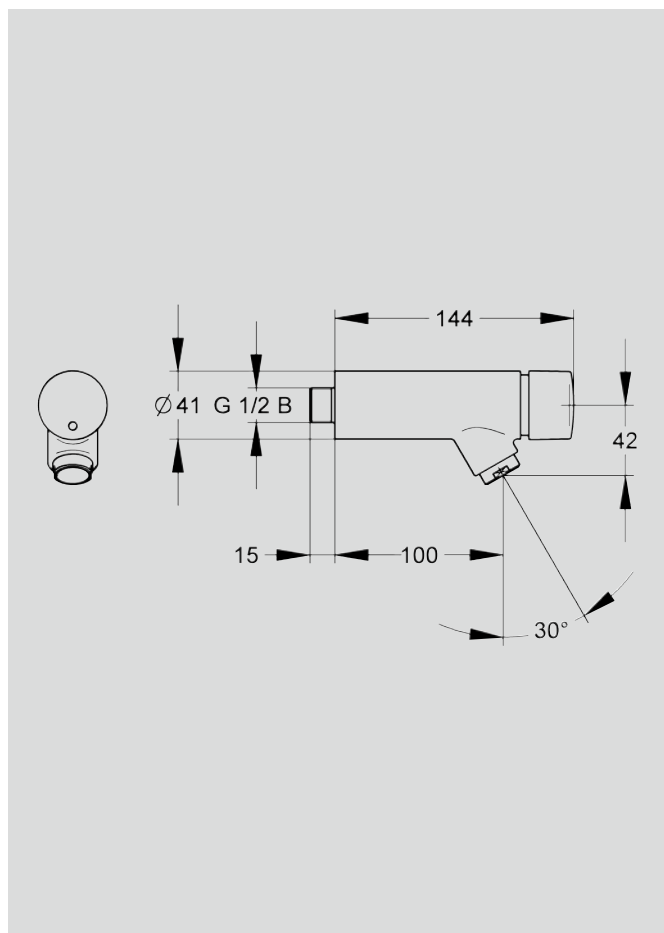
Minimum flow pressure:	1.0 bar
Calculation flow rate:	0.10 l/s
Volumetric flow:	0.10 l/s at a flow pressure of 3 bar
Flow time:	1 - 9615 s adjustable
Sound insulation:	Noise group I

Features

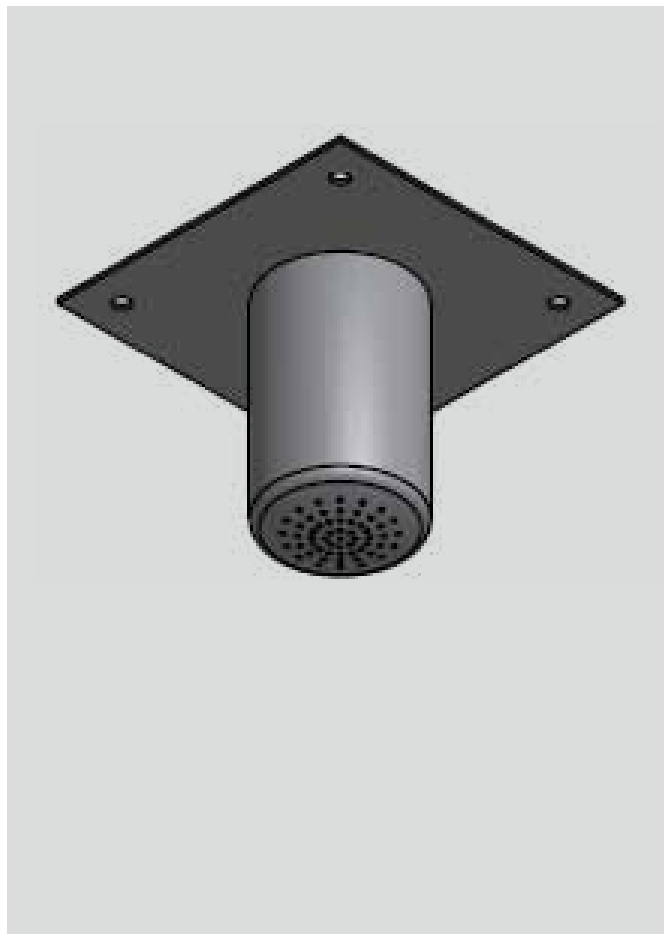
- Noise group I, for wash systems, with angled outlet and aerator with flow straightener.
- Optionally for connecting to cold water or pre-mixed warm water.
- Self-closing functional cartridge, piston-free design, with automatic and backlash-free closure.
- Adjustable flow duration.
- Full metal construction, polished chromium-plated brass.

Product code

359743



Prison Type Shower Rose (Ceiling Type)



Specification

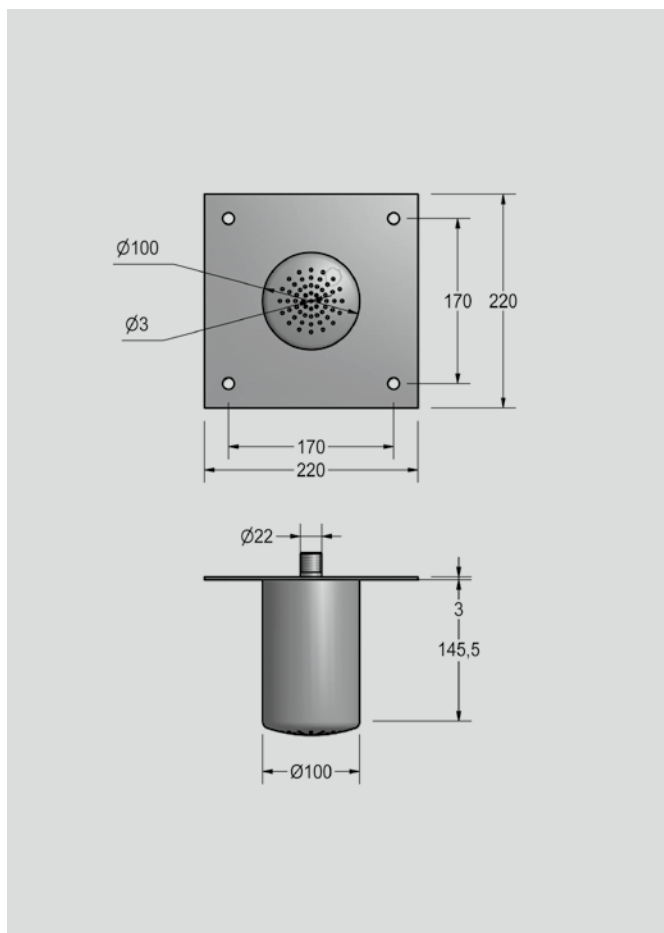
Franke Prison Type Shower Rose, 100mm diameter. Unit to be manufactured from Grade 304 (18/10) Stainless Steel, with a perforated pressed end cap and 220x220x3mm fixing plate. Unit to be fixed with four x M8 rawl bolts for fixing to the ceiling (bolts elsewhere measured).

Features

- Manufactured from Grade 304 (18/10) Stainless Steel
- Provision for secured fixing to ceiling
- Heavy duty construction external surfaces of 2mm gauge Stainless Steel

Product code

356640



Other Franke Products

WASHROOM ACCESSORIES

Franke have a wide range of Stainless Steel accessories for all applications; hands free, wall mounted and recessed accessories. Our product range includes solid Stainless Steel bathroom accessories, ideally suited for such applications as: hospitals and clinics. The new Rodan range of accessories, its timeless design with angular side profiles lends itself to the contemporary décor of heavily frequented washrooms and rest rooms.



RODAN

HANDS FREE ACCESSORIES

Franke always strives to find the ultimate hygiene solutions without compromising quality and durability. The hands free accessories offer a hygienic solution for usage in heavily frequented washrooms, wards and rest rooms. The range includes a sensor operated: soap dispenser, paper towel dispenser and hand dryer.



HANDS FREE

GRAB RAILS

Franke grab rails offer a secure support, thanks to Franke's Fine-Grip surface finish, for use in private homes and public, clinical and care sectors.



WATER MANAGEMENT

Complementing the Franke range of accessories, a new range of self-closing/sensor-operated basin taps and mixers have been added. The taps and mixers are of a heavy-duty design to improve hygiene and decrease water consumption in public ablutions. The range comprises of an electronic sensor-operated mixer and self-closing taps and mixers.



METERING TAPS & MIXERS

TRIFLOW WATER PURIFICATION MIXER

Discover the unique advantages and health benefits of the Franke Triflow water filtration system. Designed and fitted with a premium-grade carbon activated cartridge, the Franke Triflow is a health-conscious and quality drinking water filtration system. The Triflow dispenses hot, cold and perfectly filtered drinking water. The filtration system has the ability to filter out chlorides, odours and sedimentation from the water, it however does not 'strip' the water of its goodness and retains beneficial minerals such as calcium and magnesium - essential for a healthy diet.



ZIP HYDROBOILS AND CHILLERS

Zip Hydroboils are convenient plumbed-in boiling water systems that deliver instant boiling water 24 hours a day. It is a sealed system to provide ultimate hygiene and low electricity consumption. It is steam free and low maintenance.

Zip chillers are manufactured to provide chilled water under extreme temperatures. The units are plumbed to provide low operating costs, together with convenience.



Other Franke Products

HOSPITAL & MORTUARY PRODUCTS

Franke is the leading supplier of sanitaryware products to hospitals, clinics and mortuaries, environments where hygiene is of the highest priority. Our design and construction ensure that our products meet the demands of safety, hygiene and quality.

Our hospital range includes:- Stainless Steel Slop Hoppers, Drip Sinks, Bottle Racks, Bed Pan Wash Up Sinks, Surgeon Scrub-Up Units, Plaster of Paris Sinks and Baths.

Our mortuary range includes:- Rapid Transfer Gross Anatomy Trolleys, Body Trays, Post Mortem Tables, an Instrument Cabinet and Writing Desk.



INDUSTRIAL PRODUCTS

The range includes Industrial Sinks, Tables, Wall Benches and Shelving. Heavy duty industrial sinks and tables with sound deadening under frames. The range is complimented by a selection of modular designed shelving systems for medical and catering purposes.

DEKO DISINFECTION EQUIPMENT

Deko-25 WASHER- DISINFECTOR employing thermal disinfection for the washing and disinfection of medical instruments and products similar to them and used for similar purposes.

Deko-190 WASHER- DISINFECTOR (Bedpan Washer) employing thermal disinfection of human waste-containers intended for re-use such as: portable sanitary pans, hospital hollowware, bowls, kidney dishes, urine bottles, suction bottles and products similar to them and used for similar purposes.

Deko-260E Cabinet type single chamber washing disinfector (dryer optional) for surgical instruments, anaesthetic and respiratory equipment, hollowware, utensils, glassware etc.

Deko-2000 Cabinet type single chamber, washer disinfector (dryer optional) for surgical instruments, anaesthetic and respiratory equipment, hollowware, utensils, glassware etc.

Deko-DC2000E Drying cabinet is designed especially for drying surgical instruments, anaesthetic and hoses & equipment, as well as, other re-usable items used in patient health care. It is dimensioned particularly for use together with Deko-2000- Series washer disinfectors. The chamber can accommodate two full loads (4 + 4 shelves) from the washers. The sound and heat insulated double walls of the cabinet and made of AISI304 Stainless Steel. DC- 2200 is available as a single door or pass through model, left or right-hinged.

DC- 2200 Single door, left or right hinged

DC- 2200X Pass- through, left or right hinged



DEKO 25



DEKO 190



DEKO 260



DEKO 2000



DEKO DC2000

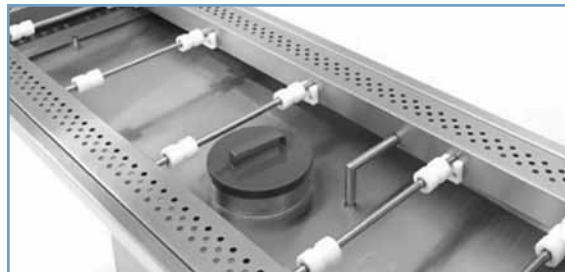
CONTACT US FOR FURTHER INFORMATION:

Specialised Mortuary Equipment

Exposure to both hazardous fumes and airborne pathogens and controlled at limits that are an order of magnitude less than (COSHH) (OSHA) Levels. Down draught ventilated tables are designed to improve working conditions, where there is exposure to hazardous fumes and airborne pathogens.

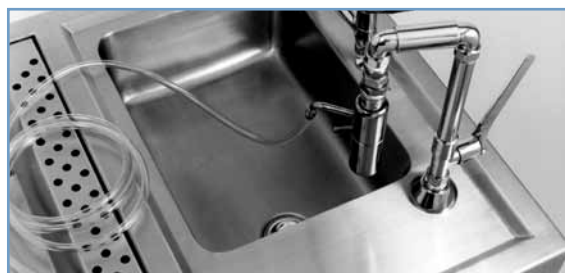
VAT 1 - VENTILATED AUTOPSY TABLE

Pathologists, Mortuary Technicians, Hygienists and Safety Officers have all become even more acutely aware of the infective hazards of post mortem rooms. We have designed and developed an open autopsy table system that not only has efficient extraction, but also is easy to clean, ergonomic and simple to install.



VAT 2 - VENTILATED AUTOPSY TABLE WITH SINK

Designed and developed an open autopsy table system that not only has efficient extraction, but also is easy to clean, ergonomic and simple to install. The table can be supplied in its basic form or in the enhanced version with integral sinks, with hot and cold mixer taps. Products can be customized to meet your individual needs, work flow, special procedures and room layout.



VST 1 - VENTILATED SPECIMEN TABLE

The ventilated specimen table is manufactured from high quality Stainless Steel throughout and mounted on a steel support structure. The unit is manufactured with adjustable feet for final on-site levelling to ensure a fully level surface is achieved. The unit is free standing with no special fixing to the floor or wall.

The top of the ventilated specimen table is manufactured from Grade 316 Stainless Steel to form a fully welded trough section that acts as the sump. All of the outside surfaces are cleaned and fully polished.



VST 8 - VENTILATED STAINING TABLE

The ventilated staining table is manufactured from high quality Stainless Steel throughout and mounted on a steel support structure. The unit is designed to provide a kneehole facility in the front of the unit. This unit requires a clearance of a 100mm for service pipework to run comfortably along the wall. The unit is manufactured with adjustable feet for final on site levelling to ensure a fully level surface is achieved. The unit is free standing with no special fixing to the floor or wall. The top of the ventilated staining table is manufactured from Grade 316 Stainless Steel to form a fully welded trough section that acts as the sump. All of the outside surfaces are cleaned and fully polished.



VST 10 - VENTILATED DISSECTION TABLE

The ventilated dissection table provides the opportunity to ventilate at the working position thereby providing maximum safety. The ventilated dissection table is designed for pathological dissection and is designed to link into the fume extraction system and if required can have a sluice unit fitted for additional waste facilities.



NOTE: These items are designed for specific installations and as such we request you to contact FRANKE for further information and assistance.



CERTIFICATE



DQS GmbH

Deutsche Gesellschaft zur Zertifizierung von Managementsystemen

hereby certifies that the company

Franke Kitchen Systems (Pty) Ltd



1194 South Coast Road, Mobeni
4060 Durban
South Africa

has implemented and maintains a **Quality Management System**

Scope:

Design, manufacture and sales of Stainless Steel Sinks, Domestic and Industrial, Hospital and Sanitary Ware, Catering Equipment, Zip Hydroboils and Sourced Products

Through an audit, documented in a report, it was verified that the management system fulfills the requirements of the following standard:

ISO 9001 : 2008

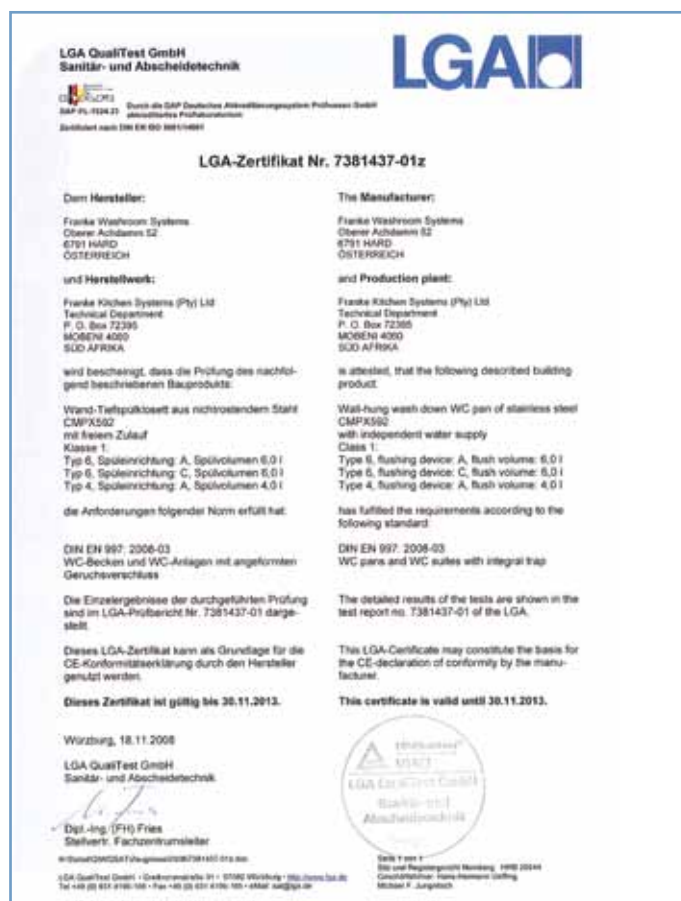
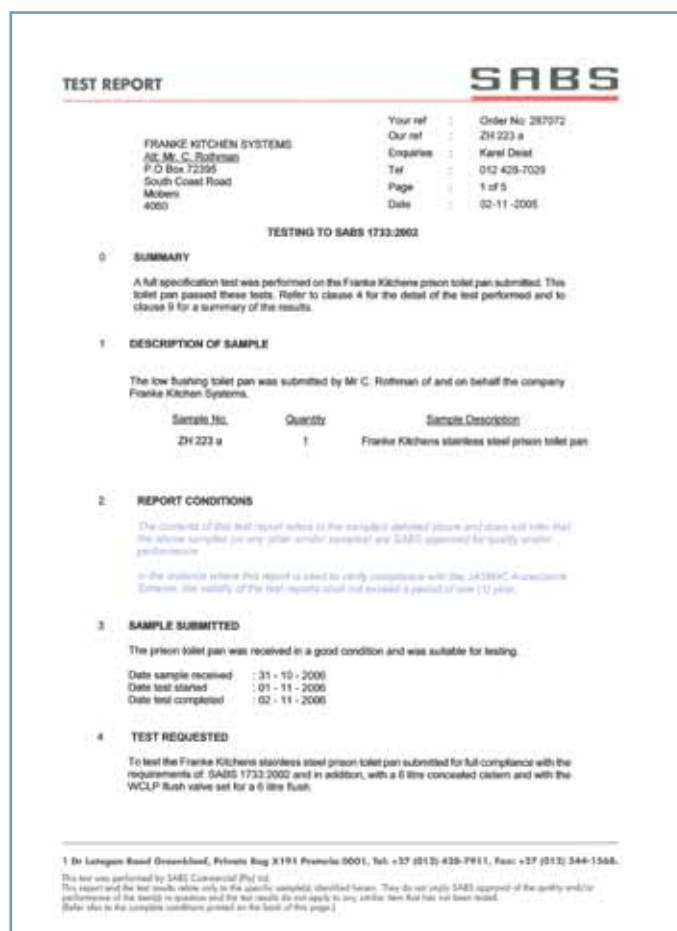
Certificate registration no. 283000 QM08

Date of certification 2010-02-17

Valid until 2013-02-16





Notes

FRANKE KITCHEN SYSTEMS (PTY) LTD

CALL CENTRE

Tel 0861 372 653

Fax +27 31 450 6302

enquiry.fsa@franke.com

www.frankews.com

DURBAN

1194 South Coast Road,

Mobeni, Durban, 4092.

South Africa

Tel +27 31 450 6300

Fax +27 31 450 6303

GAUTENG

77 Roan Crescent,

Sage Corporate Park North,

Old Johannesburg Road,

Midrand, 1682

South Africa

CAPE TOWN

Sales Office,

Franke Kitchen Systems

M5 Business Park, Unit 14, 2nd Floor,

Eastman Road, Maitland

Cape Town, 7405

South Africa

Showroom,

M5 Business Park

Unit 2A, Block A

Eastman Road, Maitland

DISCLAIMER

The information and data supplied in this brochure is based on information believed to be reliable, however it is not binding and inaccuracies may occur. Franke reserves the right to change specifications and design at any time without notice.

© 2010 by Franke Kitchen Systems (Pty) Ltd. All rights reserved under the Copyright Act of 1987 with amendments. Reproduction of any of the content, full or partial, is allowed only with the prior written approval of Franke Kitchen Systems (Pty) Ltd. No reasonable requests will be refused provided conditions as laid out are met.

All information provided in this brochure is for informational purposes only. All information, text, technical drawings and images are the exclusive property of Franke. The content herein may not be reproduced in whole or part. Any use of the content without written permission from Franke is prohibited.



WASHROOM
SYSTEMS