

WC PANS, SQUAT PANS, URINALS & SHOWERS



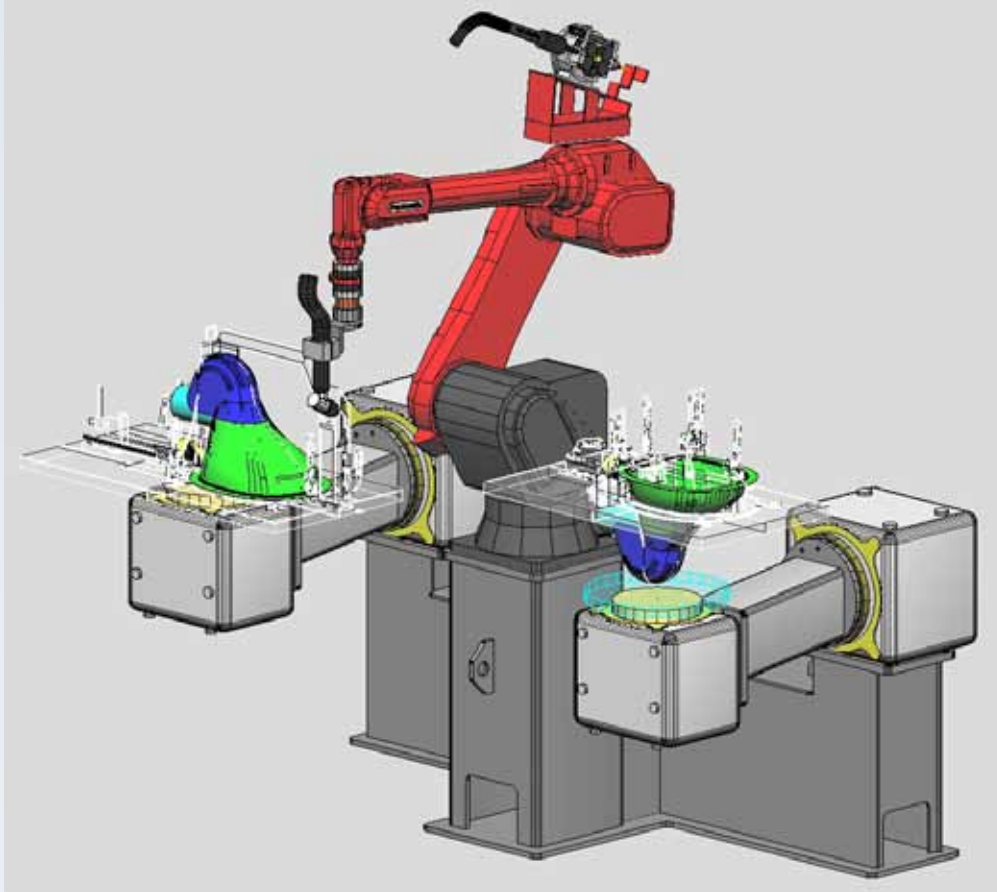
FRANKE WC PANS ARE DESIGNED TO REDUCE WATER CONSUMPTION BY UP TO 60%

WC Pans consume up to 90 percent of water usage in commercial buildings. New technology has been introduced to produce a new range that delivers high performance and aesthetically pleasing designs, to compliment the rest of the Franke sanitary ware products. Designed for ultimate hygiene solutions and ease of installation in public ablutions, the range caters for a wide variety of applications, from recreational facilities, shopping centres, petrol stations, airports and stadiums.

Product features:

- Hygienic, quality designs and excellent low water consumption
- Aesthetically pleasing design, with satin finish
- Pressed bowl and P-trap, with minimal welding through robotic welding technology
- Full flush of 4 or 6 litres
- Sturdy design and safety compliant with low maintenance compared with ceramic and composite materials
- Internationally approved accreditation (Refer to accreditations - Page 3)

INTRODUCTION TO WC PANS



PLASMA CUTTING & MIG WELDING OF WC PAN ASSEMBLY

Franke South Africa invested in new technology since 2004 to enhance its export activities into Europe, Australia, New Zealand and Africa.

The new range of Stainless Steel wall hung pans is aesthetically pleasing and no longer limited to security applications.

Stainless Steel does not crack or chip and as such has a low replacement rate. Raised above the floor the new range of wall hung pans facilitates easier cleaning around the pan resulting in improved hygiene.

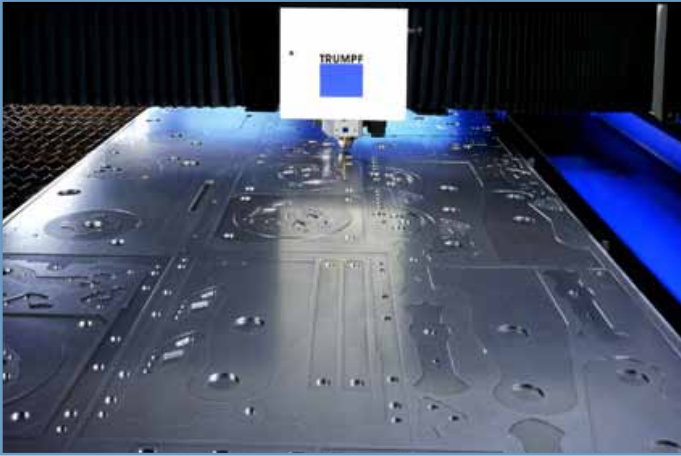
Each WC pan is pickled and passivated to prevent corrosion on welds.

Quality assurance . Each WC pan is tested to ensure that it complies with international standards. The Franke South Africa factory complies with ISO 9001:2008 Quality Management Standards.

ISO Certificate : Page 46

CAPITAL INVESTED TECHNOLOGY

The enhanced style and finishes have been achieved through a series of investment technologies.



PRECISION LASER CUTTING



DEEP DRAWING AND ANNEALING



ROBOTIC PLASMA CUTTING



PRECISION ROBOTIC WELDING

LASER TECHNOLOGY

With the detailed precision, narrowest heat-affected zone and spot-on accuracy produced by advanced laser systems, we can provide the highest quality, intricate and detailed products.

DEEP DRAWING AND ANNEALING

Deep drawing involves the use of metal dice to form blank sheets of metal into a desired shape thus reducing the need to weld components together. Deep drawing produces products that are significantly stronger and lighter. It also allows for a much smaller risk of error, consistent quality and a more predictable end product in a shorter period of time.

ROBOT WELDING

Robot welding is the use of mechanised programmable tools (robots), which completely automate a welding process by both performing the weld and handling of the part. The automated process that robotic welding brings to steel fabrication provides much higher consistency and repeatability of quality welds. Robotic welding is used to ensure that each Pan conforms with the highest quality standards.

WATER CONSERVATION AND QUALITY ASSURANCE (PAGE 46 - 49)

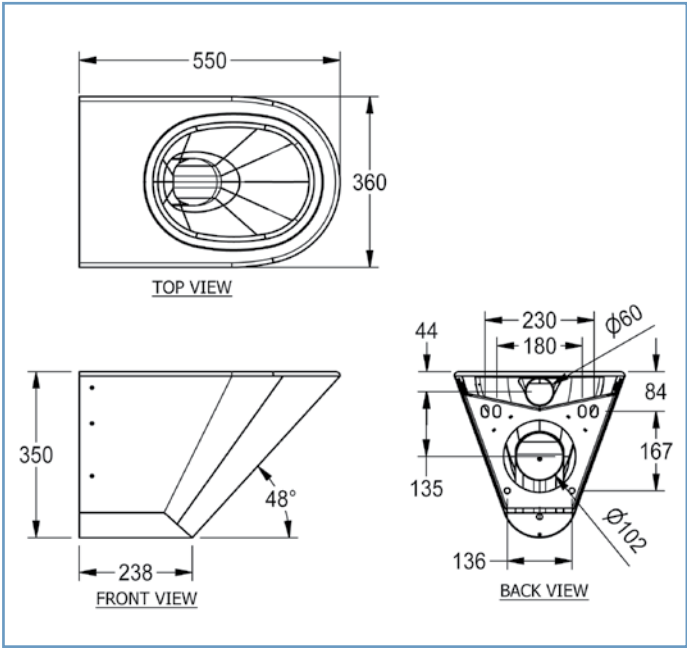
Each Franke WC pan complies with the following SABS standard:

SABS 1733: 2002

Each Franke WC pan complies with the following international standards :

| | | |
|------------|---------------|--|
| LGA DIN EN | 997: 2008-03: | paper removal test |
| LGA DIN EN | 997: 2008-03: | 6 litre flushing test - solids and urine |
| LGA DIN EN | 997: 2008-03: | 4 litre flushing test - solids and urine |

CMPX592 - STANDARD WALL HUNG PAN



Each wall hung pan is supplied with a 3mm thick Stainless Steel wall fixing bracket. The WC pan is fixed to the wall bracket with x 6 security screws.

- Wall hung pans are designed to accommodate :
- Back or top entry inlet to suit 38mm flush pipe connection for a Flush Valve **or**
 - Designed to fit onto a concealed flushing system

FEATURES:

- Grade 304 (18/10) polished Stainless Steel
- Hygienic and vandal resistant
- Pressed components to ensure consistent quality and performance
- 4 or 6 litres flushing
- Heavy duty outer casing conceals the plumbing

WC PAN CODES (EXCLUDING SEAT) (PLEASE SPECIFY)

| PRODUCT CODE | MODEL | DIMENSIONS LXDHXH | INLET |
|--------------|---------------------------------------|-------------------|------------|
| 356108 | CMPX592 | 360x550x350mm | Back Entry |
| 356176 | CMPX592 | 360x550x350mm | Top Entry |
| 825064 | CMPX592 With Geberit Kombifix Cistern | 360x550x350mm | Back Entry |

SPECIFICATION:

Franke Model CMPX592 Stainless Steel wall hung WC pan. Manufactured from Grade 304 (18/10) Stainless Steel, 360x550x350mm. Unit to be a back entry or a top entry (please specify). Unit to be supplied with 3mm thick Stainless Steel wall fixing bracket and fitted in accordance with manufacturers specifications using 4 x 8mm anchor bolts (elsewhere measured). Compliant with SABS 1733:1998 and SABS 497:1991 WC pan to flush with 4 and 6 litres of water. Pan to withstand point load of 400kg as per international standards. Optional seat available (please specify).

Flushing - WC pan to make provision for:

Top entry flushing provisions **or**
Back entry flushing **or**
Flushing with Geberit system (Please specify)
(Flushing mechanisms specified elsewhere)

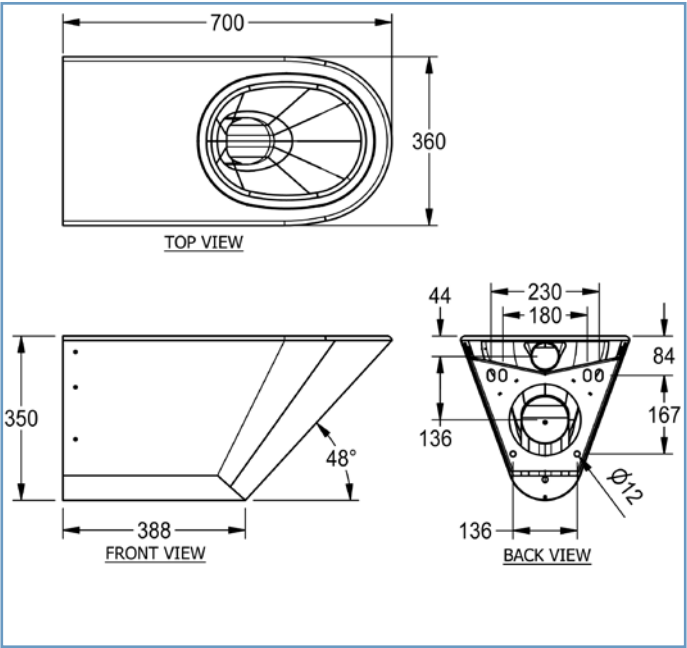
Optional Toilet Seats available (Please specify)
If required, seat must be specified with WC Pan

| PRODUCT CODE | DESCRIPTION |
|--------------|---|
| 356069 | Wooden seat or |
| 356053 | Heavy duty plastic seat (Black) or |
| 356049 | Wooden slat |

WATER CONSERVATION AND QUALITY ASSURANCE
Complies with SABS and LGA DIN EN International Standards.
Please refer to Page 3 for details.

AST1172 - Watermark Certification (Page 49)

CMPX594 - WALL HUNG PAN FOR DISABLED



Each wall hung pan is supplied with a 3mm thick Stainless Steel wall fixing bracket. The WC pan is fixed to the wall bracket with x 6 security screws.

- Wall hung pans are designed to accommodate :
- Back or top entry inlet to suit 38mm flush pipe connection for a Flush Valve **or**
 - Designed to fit onto a concealed flushing system

FEATURES:

- Grade 304 (18/10) polished Stainless Steel
- Hygienic and vandal resistant
- Pressed components to ensure consistent quality and performance
- 4 or 6 litres flushing
- Heavy duty outer casing conceals the plumbing

WC PAN CODES (EXCLUDING SEAT) (PLEASE SPECIFY)

| PRODUCT CODE | MODEL | DIMENSIONS LXDHX | INLET |
|--------------|---|------------------|------------|
| 356114 | CMPX594 | 360x700x350mm | Back Entry |
| 356174 | CMPX594 | 360x700x350mm | Top Entry |
| 825063 | CMPX594 With Geberit Kombifix Concealed Cistern | 360x700x350mm | Back Entry |

SPECIFICATION:

Franke Model CMPX594 Stainless Steel wall hung WC pan. Manufactured from Grade 304 (18/10) Stainless Steel, 360x700x350mm. Unit to be a back entry or a top entry (please specify). Unit to be supplied with 3mm thick Stainless Steel wall fixing bracket and fitted in accordance with manufacturers specifications using 4 x 8mm anchor bolts (elsewhere measured). Compliant with SABS 1733:1998 and SABS 497:1991 WC pan to flush with 4 and 6 litres of water. Pan to withstand point load of 400kg as per international standards. Optional seat available (please specify).

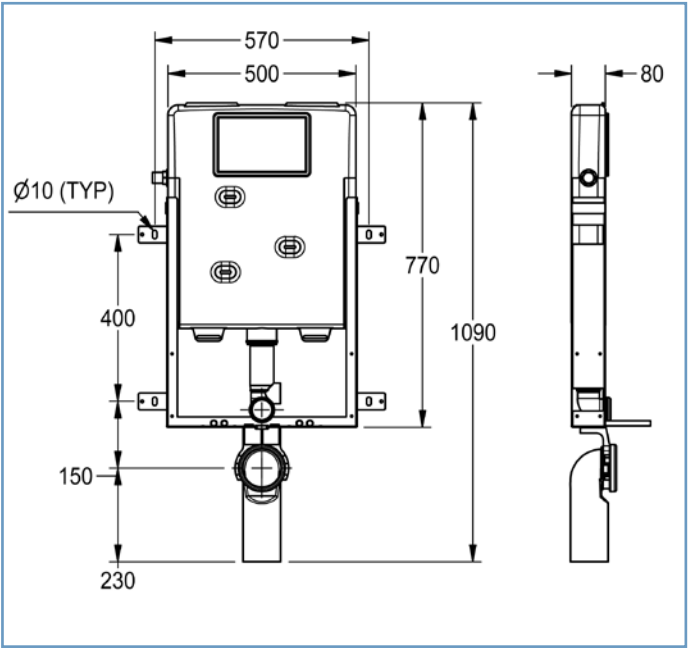
Flushing - WC pan to make provision for:
Top entry flushing provisions **or**
Back entry flushing **or**
Flushing with Geberit system (Please specify)
(Flushing mechanisms specified elsewhere)

Optional Toilet Seats available (Please specify)
If required, seat must be specified with WC Pan

| PRODUCT CODE | DESCRIPTION |
|--------------|---|
| 356069 | Wooden seat or |
| 356053 | Heavy duty plastic seat (Black) or |
| 356049 | Wooden slat |

WATER CONSERVATION AND QUALITY ASSURANCE
Complies with SABS and LGA DIN EN International Standards.
Please refer to Page 3 for details.

FRANKE BUNDLE PACK WITH CONCEALED CISTERN



Kombifix

Kombifix is the solution created especially for solid wall constructions. Over the years Geberit Kombifix has proven itself as a very reliable system for pre-wall installations. It has good noise reduction qualities, the highest functional reliability and is designed to carry weights up to 400 kg.

FEATURES:

- Saving in household water consumption
- Silent filling valve
- For installation in a solid wall
- Complete with Delta15 Single Flush, Stainless Steel actuator plate
- Large flush volume can be set
- Cistern concealed in wall

WC PAN BUNDLE PACK (EXCLUDING SEAT) (PLEASE SPECIFY)

| PRODUCT CODE | MODEL | DIMENSIONS LXDxH | INLET |
|--------------|---|------------------|------------|
| 825064 | CMPX592 With Geberit Kombifix Cistern with Actuator | 360x550x350mm | Back Entry |
| 825063 | CMPX594 With Geberit Kombifix Concealed Cistern with Actuator | 360x700x350mm | Back Entry |

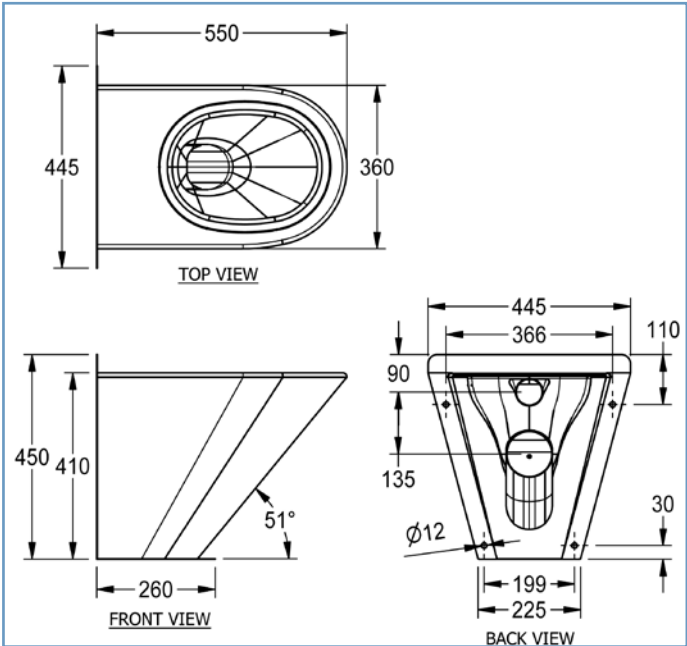
SPECIFICATION:

Franke Bundle Pack CMPX...(please specify) with Geberit Kombifix UP172 concealed cistern with front actuation, 770x500x80mm depth. Installation height of 1090mm. Fastening for outlet bend pluggable. To be supplied complete with galvanised mounting frame with 4 fastening brackets. Water supply connection is at the top of the unit, connection hose to angle stop valve can be fixed without tools. Unit complete with 2 x threaded rods M12 for fastening, protection cover for service opening - polystyrene foam, angle stop valve R1/2" and plug adapter, outlet bend bracket, connector set ø 90mm, WC outlet bend, PE-HD ø 90/90mm, adapter sleeve, PE-HD ø 90/110mm, 2 x protection plugs, fastening material and netting for direct plastering.

Optional Toilet Seats available (Please specify)
If required, seat must be specified with WC Pan

| PRODUCT CODE | DESCRIPTION |
|--------------|------------------------------------|
| 356069 | Wooden seat or |
| 356053 | Heavy duty plastic seat (Black) or |
| 356049 | Wooden slat |

HDTX597 WALL AND FLOOR MOUNTED SHROUDED PAN



FEATURES:

- Grade 304 (18/10) Stainless Steel 1.2mm gauge
- Hygienic and vandal resistant
- Pressed components to ensure consistent quality and performance
- 4 or 6 litres flushing
- Heavy duty outer casing conceals the plumbing
- Pressed flushing rim
- Provision for secured fixing through wall and into floor
- Optional provision for seat or wooden slats
- Optional outlet and flush inlet pipes are available, which can be shortened/lengthened to suit plumbing
- Sub-assembly of pan is pickled and passivated to prevent corrosion

SPECIFICATION:

Franke Model HDTX597 Heavy Duty Wall and Floor Mounted WC Pan 360x550x410mm high. Unit to be manufactured from Grade 304 (18/10) Stainless Steel 1,2mm gauge. Unit to be manufactured with a pressed flushing rim and integral “P” Trap with a 100mm outlet pipe and a 60mm back entry inlet pipe to suit a rubber flush inlet sealing bung. The pan to be manufactured with a shroud, with internal flanges for securing the pan through the wall and into floor with anchor bolts. (Bolts elsewhere measured).

Optional Extra:
Inlet and outlet pipes extended to 250mm.

WC PAN CODES (EXCLUDING SEAT) (PLEASE SPECIFY)

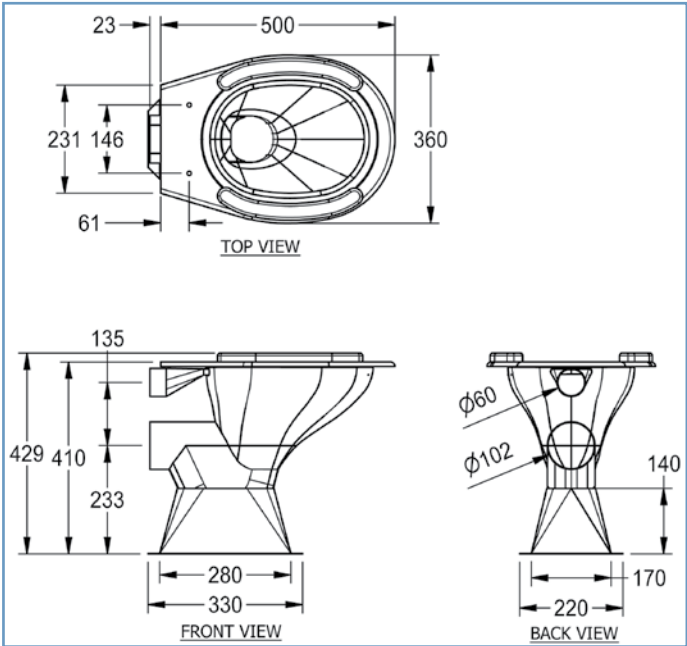
| PRODUCT CODE | MODEL | DESCRIPTION |
|--------------|----------|---|
| 356082 | HDTX 597 | with external flanges |
| 356117 | HDTX 597 | with external flanges with 250 mm long extended pipes |
| 356086 | HDTX 597 | with internal flanges (wall and floor) |
| 356118 | HDTX 597 | with internal flanges with 250 mm long extended pipes |

Optional Toilet Seats available (Please specify)
If required, seat must be specified with WC Pan

| PRODUCT CODE | DESCRIPTION |
|--------------|------------------------------------|
| 356069 | Wooden seat or |
| 356053 | Heavy duty plastic seat (Black) or |
| 356049 | Wooden slat |

WATER CONSERVATION AND QUALITY ASSURANCE
Complies with SABS and LGA DIN EN International Standards.
Please refer to Page 3 for details.

HCL PEDESTAL WC PAN



FEATURES:

- Grade 304 (18/10) Stainless Steel, 1.2mm gauge
- Hygienic and vandal resistant
- Pressed components to ensure consistent quality and performance
- 4 or 6 litres flushing
- Optional provision for seat or wooden slats
- Sub-assembly of pan is pickled and passivated to prevent corrosion

| PRODUCT CODE | MODEL | DESCRIPTION |
|--------------|-------|-------------------|
| 356084 | HCL | Pan with slats |
| 356076 | HCL | Pan without slats |

Optional Toilet Seats available (Please specify)
If required, seat must be specified with WC Pan

| PRODUCT CODE | DESCRIPTION |
|--------------|---------------------------------|
| 356053 | Heavy duty plastic seat (Black) |

SPECIFICATION:

Franke Model HCL Pedestal WC Pan, unit to be manufactured from Grade 304 (18/10) Stainless Steel, 1,2mm gauge. Unit to be manufactured with a pressed flushing rim and integral “P” Trap with a 102mm outlet pipe, and a 60mm back entry inlet pipe to suit a rubber flush inlet sealing bung. The pan to be fitted with a Stainless Steel base which has flanges with 6mm holes for fixing the pan to the floor (bolts elsewhere measured).

Optional Flushing Systems:

- Surface mounted or concealed Flush Valve
- High level Stainless Steel cistern with Supa Flush Valve and a 41mm diameter Stainless Steel flush pipe.
- Low level Stainless Steel cistern with Supa Flush Valve and PVC flush pipe.

WATER CONSERVATION AND QUALITY ASSURANCE
Complies with SABS and LGA DIN EN International Standards.
Please refer to Page 3 for details.

SECURITY PRODUCTS

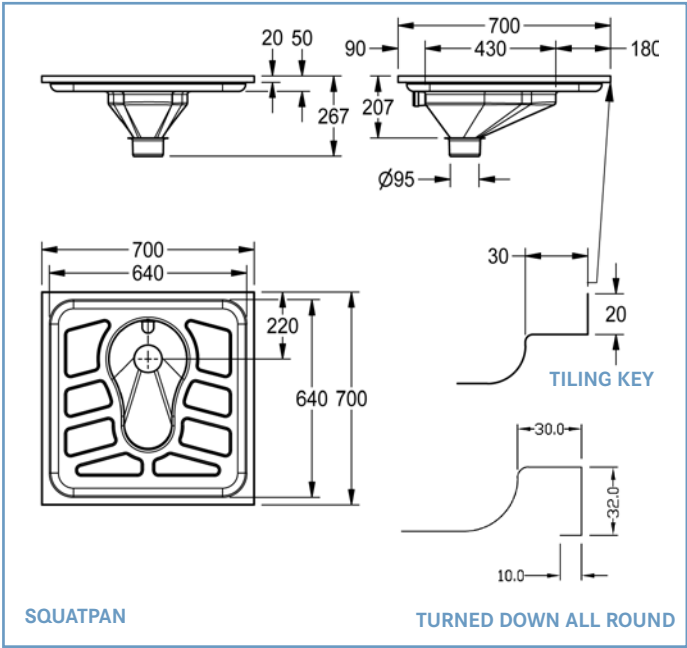
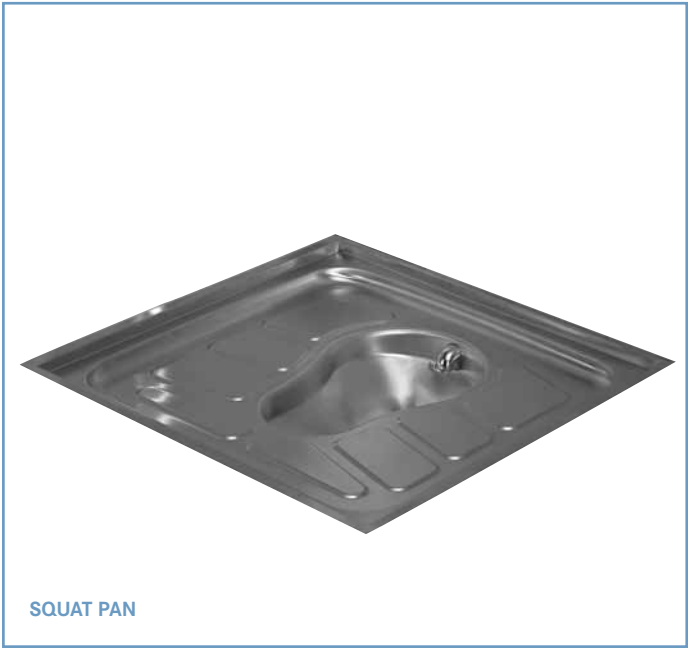
Designed by Franke in consultation with leading architects and developers, the heavy duty security items are suitable for various applications such as correctional services and areas of high vandalism.

- | | |
|---|--|
| <ul style="list-style-type: none">• Pressed bowl and P-trap• Full flush with 4 or 6 litres• Robotic welding technology• Heavy duty fixing system | <ul style="list-style-type: none">• Sturdy design and safety compliance• Integral Stainless Steel inlet and outlet pipes• Option anti-escape bars• Integral fixing brackets |
|---|--|

Kindly refer to our Security Products Brochure for further information.



SQUAT PANS



FEATURES:

- Grade 304 (18/10) Stainless Steel, 1.2mm gauge
- Hygienic pan cannot chip or crack
- Designed for the highest level of anti-vandal resistance
- Heavy duty construction external surfaces 1.2mm gauge
- Fully pressed design with raised tread plates
- Concealed back entry flush pipe inlet suitable for surface mounted or concealed flush valves, low or high level cisterns
- Supplied with flushing spreader
- Flushes with 9 Litres Low Level Cistern

SPECIFICATION:

Franke Model 700x700mm OR 740x740mm... (please specify) Squat Pan. Unit to be manufactured from Grade 304 (18/10) Stainless Steel , 1,2 mm gauge with the foot plate and flush bowl pressed into one piece. The foot plate tray to be pressed in raised pattern on both sides and in front of the flush bowl. The unit to be fitted with a rear entry flushing spreader that will self seal with 38mm or 41mm flushing pipe (please specify), waste outlet with a 110mm external diameter, suitable for fitting to a standard 110mm PVC or cast iron waste connector.

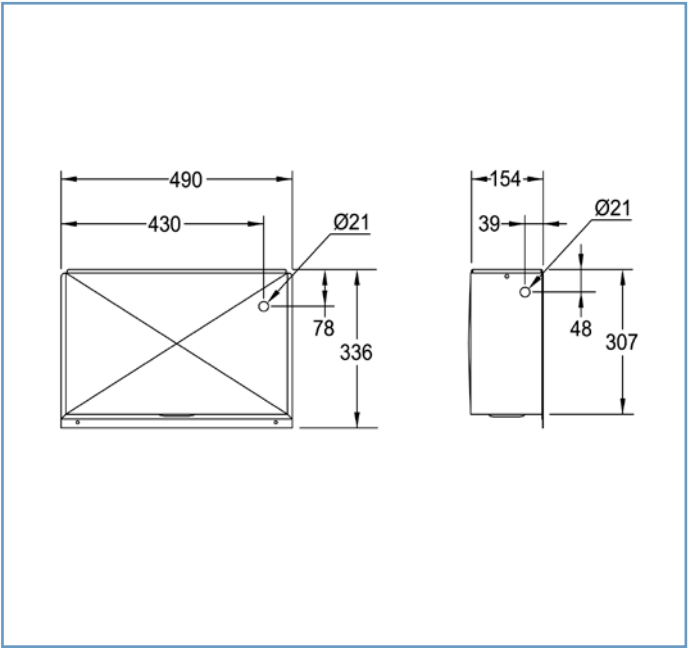
Optional Extras:

Also available with High level Stainless Steel cistern with Supa Flush Valve and 41mm diameter Stainless Steel flush pipe.

Please refer to Page 10.

| PRODUCT CODE | DIMENSIONS (LXW) | DESCRIPTION |
|--------------|------------------|---|
| 356014 | 700x700mm | Squat Pan with 20 mm turn up all round |
| 356013 | 740x740mm | Squat Pan with 20 mm turn up and flange all round |

STAINLESS STEEL CISTERN



FEATURES:

- Grade 304 (18/10) Stainless Steel
- Low or high level cistern.
- Low level cistern complete with PVC flush pipe and supa flush valve
- High level cistern complete with supa flush valve and chain
- 11 Litres high or low level cistern

SPECIFICATION:

Franke Model...(please specify) 11 Litre Cistern 490x336x150mm. Unit to be manufactured from Grade 304 (18/10) Stainless Steel. Low level cistern to be supplied complete with PVC flush pipe, supa flush valve and ball valve **OR** High level cistern supplied complete with supa flush valve with chain and ball valve...(please specify).

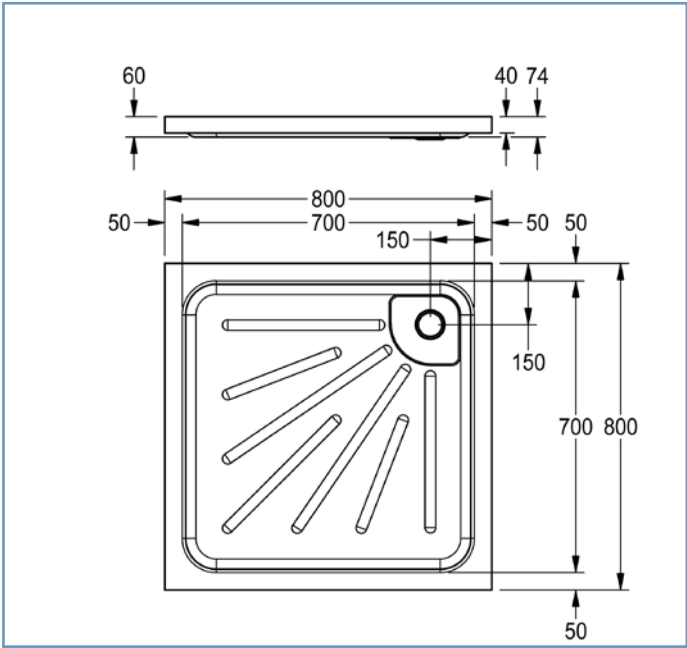
Optional Stainless Steel Flush Pipe 1700mm (please specify).

| PRODUCT CODE | MODEL | DESCRIPTION |
|--------------|------------------|---|
| 356005 | SCL (Low level) | Low Level Cistern complete with PVC flush pipe, Supa Flush Valve and Ball Valve |
| 356605 | SCH (High level) | High Level Cistern with Supa Flush Valve with Chain & Ball Valve |

OPTIONAL EXTRAS

| PRODUCT CODE | MODEL | DESCRIPTION |
|--------------|------------------|--|
| 356600 | Supa Flush Valve | Supa flush valve for HLC (High Level Cistern) with chain |
| 403237 | St St Flush Pipe | Stainless Steel Flush Pipe 1700mm |

BS SHOWER TRAYS



FEATURES:

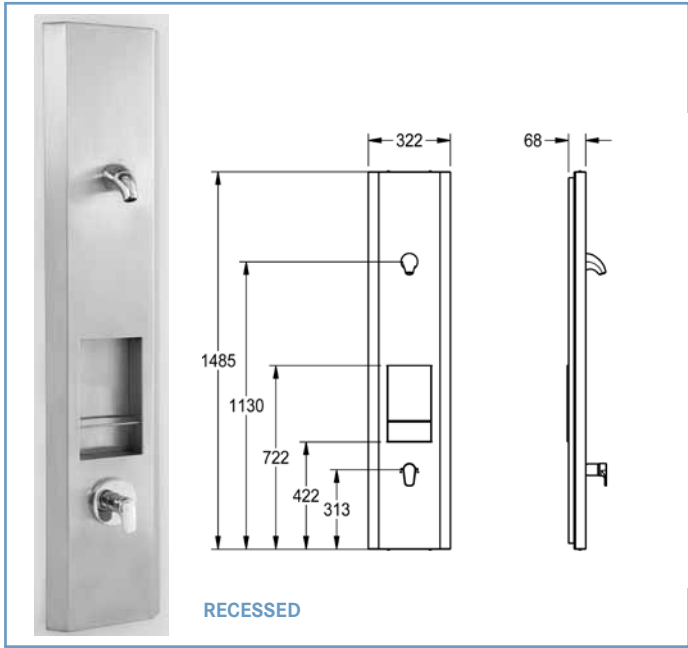
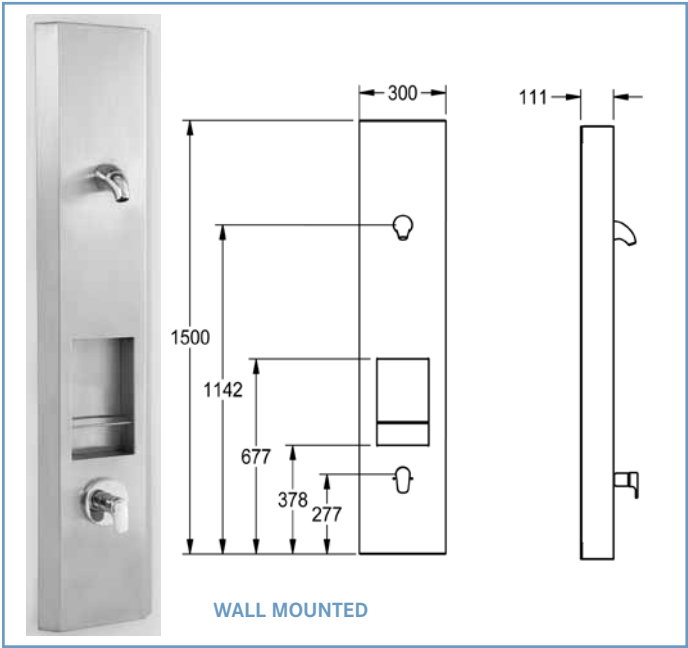
- Grade 304 (18/10) Stainless Steel 1,2mm gauge
- Hygienic cannot chip or crack
- Designed for the highest level of anti vandal resistance
- Radiused internal corners for easy cleaning
- One piece pressed seamless design with raised surface
- Built-in fall to 38mm BSP grated waste outlet in corner position

SPECIFICATION:

Franke Model BS400 (800x800x75mm deep) OR BS401 (900x900x75mm deep)...(please specify), 75mm deep Pressed Shower Tray. Manufactured from Grade 304 (18/10) Stainless Steel, 1,2mm gauge. Unit with radiused corners and a patterned base, with 40mm apron all round and 38mm BSP integrated waste outlet. (Waste fitting elsewhere measured).

| PRODUCT CODE | MODEL | DIMENSIONS |
|--------------|-------|-------------------|
| 359996 | BS400 | 800x800x75mm deep |
| 359995 | BS401 | 900x900x75mm deep |

SHOWER PANELS - WALL MOUNTED & RECESSED



Shower Rose and Mixer sold separately

FEATURES:

SPECIFICATION:

- Grade 304 (18/10) Stainless Steel 1,2mm gauge
- Wall mounted with recessed plumbing connections
- Provision for Shower Rose and Mixer. (Items sold separately)
- Recessed storage shelf for soap or shampoo

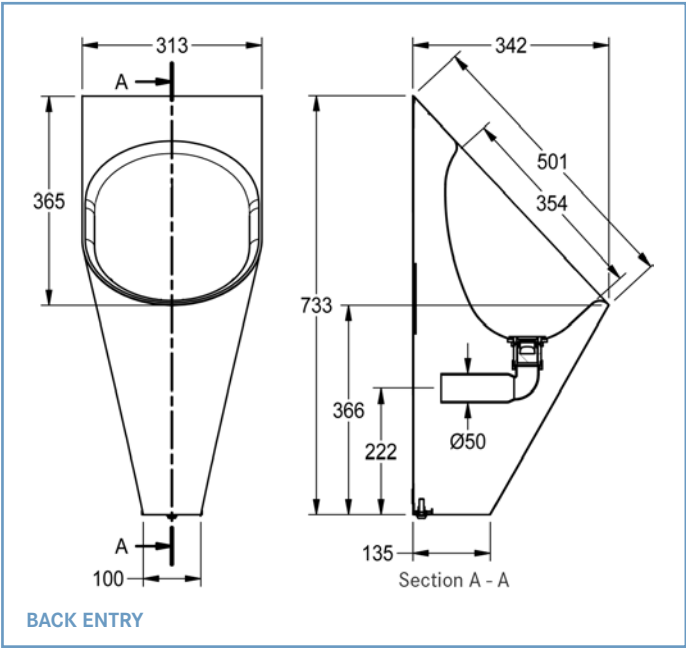
WALL MOUNTED
Franke Wall Mounted Shower Panel 1500x300x111mm. Unit to be manufactured from Grade 304 (18/10) Stainless Steel ,1,2 mm gauge. To be complete with radiused corners and a recessed storage shelf in the front panel with a front rail. Unit to be manufactured with holes to accommodate the mixer/tap (please specify) and shower rose (please specify). (Fittings elsewhere measured)

| PRODUCT CODE | MODEL | DIMENSIONS |
|--------------|----------------------------|----------------|
| 359610 | Wall Mounted Shower Panel* | 1500x300x111mm |
| 359611 | Recessed Shower Panel* | 1485x322x68mm |

* FITTINGS EXCLUDED

RECESSED
Franke Recessed Shower Panel 1485x322x45mm. Unit to be manufactured from Grade 304 (18/10) Stainless Steel ,1,2 mm gauge. To be complete with angled corners and a recessed storage shelf in the front panel with a front rail. Unit to be manufactured with holes to accommodate the mixer/tap (please specify) and shower rose (please specify). (Fittings elsewhere measured)

CMPX538 WALL HUNG URINAL - BACK OR TOP ENTRY FLUSHING



FEATURES:

- Heavy duty construction Grade 304 (18/10) Stainless Steel 1.2mm thick.
- Hygienic cannot chip or crack
- Pressed bowl with a bright polished finish on outside
- Aesthetically appealing – matches any decor
- Available in two models: Top Entry and Back Entry
- Easy to Install Surface Mounting

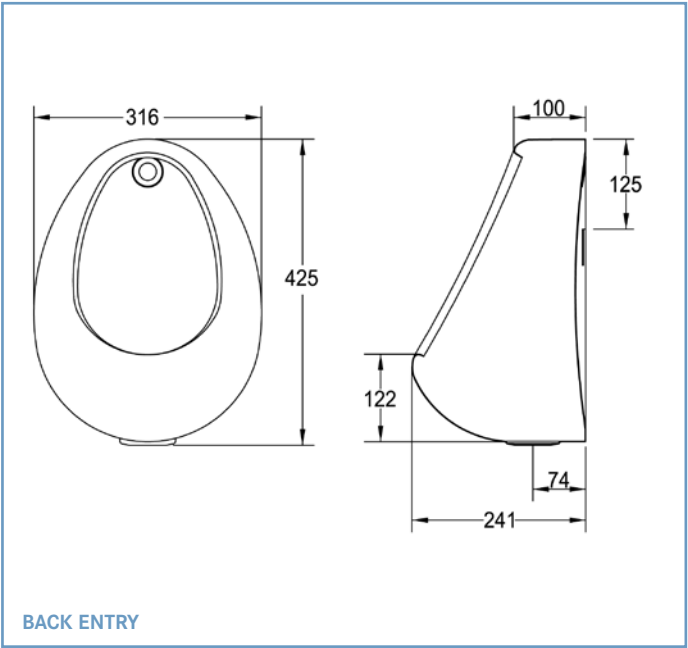
SPECIFICATION:

BACK ENTRY
Franke Model CMPX538 Back entry single wall mounting urinal, 313 x 732 x 341mm with a pressed oval bowl. Unit to be manufactured from Grade 304 (18/10) Stainless Steel. Unit to be complete with 40mm waist outlet with a pressed perforated stainless steel grid and chrome plated button spreader with a 15mm coupling to connect to water supply. Unit to be mounted to the wall using a 1.2mm Stainless steel bracket. Unit to be secured using rawl bolts. (bolts elsewhere measured)

TOP ENTRY
Franke Model CMPX538 Top entry single wall mounting urinal, 313 x 732 x 341mm with a pressed oval bowl. Unit to be manufactured from Grade 304 (18/10) stainless steel. Unit to be complete with 40mm waist outlet with a pressed perforated stainless steel grid and chrome plated button spreader with a 15mm coupling to connect to water supply. Unit to be mounted to the wall using a 1.2mm Stainless steel bracket. Unit to be secured using rawl bolts. (bolts elsewhere measured)

| PRODUCT CODE | MODEL | DIMENSIONS LXDxH | INLET |
|--------------|---------|------------------|------------|
| 333258 | CMPX538 | 313x733x342mm | Back Entry |
| 333259 | CMPX538 | 313x733x342mm | Top Entry |

BARRON BOWL URINAL



FEATURES:

- Grade 304 (18/10) Stainless Steel, 1.2mm gauge
- Heavy duty construction, hygienic cannot chip or crack
- Pressed bowl with a bright polished finish on exterior
- Aesthetically appealing – matches any decor
- Available in two models: Top Entry and Back Entry
- Easy to Install Surface Mounting

SPECIFICATION:

BACK ENTRY
Franke Model BE (Back Entry Inlet) Barron Bowl Urinal, 316x425x241mm. Unit to be manufactured from Grade 304 (18/10) Stainless Steel, 1,2mm gauge. Unit to be complete with 40mm waste outlet with a pressed perforated Stainless Steel grid and a chrome plated button spreader with a 15mm coupling to connect to water supply. Bowl to be fitted with a 2mm thick mounting plate with two key hole slots for mounting the unit to the wall. (Bolts elsewhere measured).

TOP ENTRY
Franke Model TE (Top Entry Inlet) Barron Bowl Urinal, 316x425x241mm. Unit to be manufactured from Grade 304 (18/10) Stainless Steel, 1,2mm gauge. Unit to be complete with 40mm waste outlet with a pressed perforated Stainless Steel grid and a chrome plated button spreader with a 15mm coupling to connect to water supply. Bowl to be fitted with a 2mm thick mounting plate with two key hole slots for mounting the unit to the wall. (Bolts elsewhere measured).

Recommended Fittings
Model TE (Top Entry): Flush Valve Specification
Cobra Junior Flushmaster ref FJ6.000
Tailpipe: Cobra ref FJT 5.5

Model BE (Back Entry): Flush Valve Specification
Cobra Junior Flushmaster ref FJ8.102 (concealed type with palm press push-button)

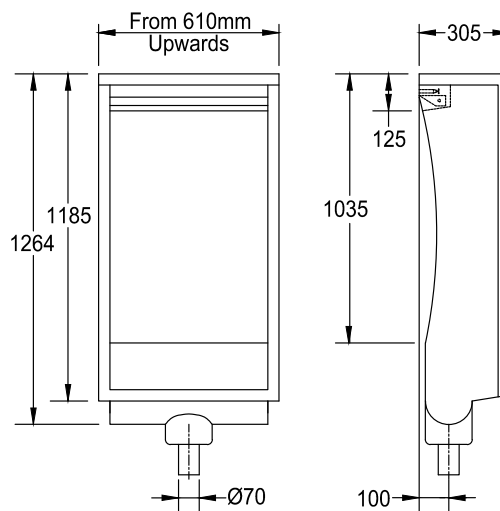
Important: Kindly refer to Cobra regarding water pressure and flow.

| PRODUCT CODE | MODEL | DIMENSIONS LXDH | INLET |
|--------------|-------|-----------------|------------|
| 333200 | BE | 316x425x241mm | Back Entry |
| 333250 | TE | 316x425x241mm | Top Entry |

URINALS: CB101 (FLUSH VALVE/CISTERN) & CB102 (AUTOFLUSH)



CB101



CB101

FEATURES:

- Manufactured from 304(18/10) Stainless Steel
- Back of urinal fully sound deadened
- Sides and top complete with tiling key.
- For use with flush valve or high level cistern
- Concealed sparge pipe
- Supplied with a 70mm outlet
- Recessed Stainless Steel domical grating
- Free standing ends where end plate is exposed
- Sloped drip ledge for hygiene
- Standards lengths of 610 - 2440mm

SPECIFICATION:

CB101: FLUSH VALVE/CISTERN

Franke Model CB101 (flush valve/cistern) curved back urinal length...mm (please specify). Unit to be manufactured from Grade 304 (18/10) Stainless Steel. The urinal to be supplied with a concealed sparge pipe and a 22mm inlet with chrome plated conex fitting for connecting to high level cistern or urinal flush valve (elsewhere measured). Outlet to be situated on the left, or right, or centre (please specify) of the urinal with a 102mm removable domical grating and to include a built-in threaded plate. Urinal to be supplied with a tiling key to the sides and rear walls. The back to be fully sound deadened with vermin proof bitumastic material.

CB102: AUTOFLUSH

Franke Model CB102 (automatic flushing) curved back urinal length...mm (please specify). Unit to be manufactured from Grade 304 (18/10) Stainless Steel. Urinal to be supplied with built-in tipping tank and a 12mm adjustable drip cock (inlet) which controls the automatic flushing of the urinal at regular intervals. Outlet to be situated on the left, or right, or centre (please specify) of the urinal with a 102mm removable domical grating and to include a built in threaded plate. The urinal to be supplied with a tiling key to the sides and rear walls. The back to be fully sound deadened with vermin proof bitumastic material.

Non Standard Wall & Floor Urinals (Available on request)

"L" Shaped Urinal

Franke Model CB101 or CB102 "L" Shaped curve back urinal length (... x ...) (please specify) manufactured from Grade 304 (18/10) Stainless Steel. Unit will be supplied with one welded corner an easy assembly joint with sealing strip (as recommended).

"U" Shaped Urinal

Franke Model CB101 or CB102 "U" Shaped curve back urinal length (... x ... x ...) (please specify) manufactured from Grade 304 (18/10) Stainless Steel. Unit will be supplied with two welded corners an easy assembly joints with sealing strip (as recommended).

Welded Corner

All the right angled corners on "L" and "U" shaped urinals will be manufactured with welded joints to ensure the fall in the trough is maintained and the drainage to the outlet is accurate.

Easy Assembly Joint

For ease of installation and transportation on lengths over 3000mm and for "L" and "U" shaped urinals. Urinals are manufactured in two sections and bolted together on site with an easy assembly joint. This joint will be sealed with a neoprene rubber sealing strip supplied with the urinal.

URINALS: CB101 & CB102

CB101: FLUSH VALVE/CISTERN

| PRODUCT CODE | MODEL | DIMENSIONS | OUTLET | NO. OF INLETS |
|--------------|-------|------------|------------|---------------|
| 330150 | CB101 | 610mm | Centre | 1 |
| 330450 | CB101 | 915mm | Centre | 1 |
| 330750 | CB101 | 1220mm | Centre | 1 |
| 331050 | CB101 | 1525mm | Centre | 1 |
| 331250 | CB101 | 1830mm | Right Hand | 1 |
| 331300 | CB101 | 1830mm | Left Hand | 1 |
| 331350 | CB101 | 1830mm | Centre | 1 |
| 331501 | CB101 | 2135mm | Left Hand | 2 |
| 331502 | CB101 | 2135mm | Right Hand | 2 |
| 331503 | CB101 | 2135mm | Centre | 2 |
| 331550 | CB101 | 2440mm | Right Hand | 2 |
| 331600 | CB101 | 2440mm | Left Hand | 2 |
| 331650 | CB101 | 2440mm | Centre | 2 |

* Non Standard sizes available on request

CB102: AUTOFLUSH

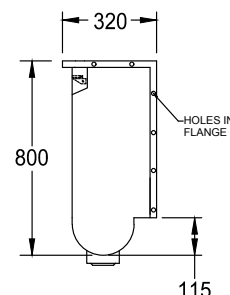
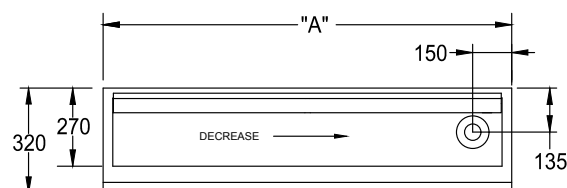
| PRODUCT CODE | MODEL | DIMENSIONS | OUTLET | NO. OF INLETS |
|--------------|-------|------------|------------|---------------|
| 331800 | CB102 | 610mm | Centre | 1 |
| 332100 | CB102 | 915mm | Centre | 1 |
| 332400 | CB102 | 1220mm | Centre | 1 |
| 332700 | CB102 | 1525mm | Centre | 1 |
| 332900 | CB102 | 1830mm | Right Hand | 1 |
| 332950 | CB102 | 1830mm | Left Hand | 1 |
| 333000 | CB102 | 1830mm | Centre | 1 |
| 333151 | CB102 | 2135mm | Left Hand | 2 |
| 333152 | CB102 | 2135mm | Right Hand | 2 |
| 333153 | CB102 | 2135mm | Centre | 2 |
| 333158 | CB102 | 2440mm | Right Hand | 2 |
| 333157 | CB102 | 2440mm | Left Hand | 2 |
| 333159 | CB102 | 2440mm | Centre | 2 |

* Non Standard sizes available on request

TROUGH URINALS: TU101 (FLUSH VALVE/CISTERN) & TU102 (AUTOFLUSH)



TU101 WITH LEFT OUTLET



TU101 WITH RIGHT OUTLET

FEATURES:

- Manufactured from Grade 304 (18/10) Stainless Steel
- Back of urinal fully sound deadened
- Sides and top complete with tiling key.
- For use with flush valve or high level cistern
- Concealed sparge pipe
- Free standing ends where end plate is exposed
- Left or right outlets (provision for 40mm waste outlet)
- Standard lengths of 610 to 1830mm

SPECIFICATION:

TU101: FLUSH VALVE/CISTERN

Franke Model TU101 flat back wall mounted Trough Urinal, length ...mm (please specify). Unit to be manufactured from Grade 304 (18/10) Stainless Steel, 0,9mm gauge. Urinal to be supplied with a concealed sparge pipe and a 22mm inlet with chrome plated conex fitting for connecting to the high level cistern or urinal flush valve (elsewhere measured). Outlet to be situated on the left or right... (please specify) of the urinal with a recess for 40mm chrome plated waste outlet (to be supplied). Urinal to include a tiling key to sides and rear walls. The back to be fully sound deadened with vermin proof bitumastic material.

TU102: AUTOFLUSH

Franke Model TU102 flat back wall mounted Trough Urinal, length ...mm (please specify). Unit to be manufactured from Grade 304 (18/10) Stainless Steel, 0,9mm gauge. Urinal to be supplied with built-in tipping tank and a 12mm adjustable drip cock (inlet) which controls the automatic flushing of the urinal at regular intervals. Outlet to be situated on the left or right ... (please specify) of the urinal with a recess for a 40mm chrome plated waste outlet (to be supplied). Urinal to include a tiling key to sides and rear walls. The back to be fully sound deadened with vermin proof bitumastic material.

TROUGH URINALS: TU101 & TU102

TU101: FLUSH VALVE/CISTERN

| PRODUCT CODE | MODEL | DIMENSIONS | OUTLET | NO. OF INLETS |
|--------------|-------|------------|------------|---------------|
| 334452 | TU101 | 610mm | Left Hand | 1 |
| 334370 | TU101 | 610mm | Right Hand | 1 |
| 334458 | TU101 | 915mm | Left Hand | 1 |
| 334371 | TU101 | 915mm | Right Hand | 1 |
| 334465 | TU101 | 1220mm | Left Hand | 1 |
| 334372 | TU101 | 1220mm | Right Hand | 1 |
| 334472 | TU101 | 1525mm | Left Hand | 1 |
| 334373 | TU101 | 1525mm | Right Hand | 1 |
| 334478 | TU101 | 1830mm | Left Hand | 1 |
| 334374 | TU101 | 1830mm | Right Hand | 1 |

* Non Standard sizes available on request

TU102: AUTOFLUSH

| PRODUCT CODE | MODEL | DIMENSIONS | OUTLET | NO. OF INLETS |
|--------------|-------|------------|------------|---------------|
| 334482 | TU102 | 610mm | Left Hand | 1 |
| 334380 | TU102 | 610mm | Right Hand | 1 |
| 334486 | TU102 | 915mm | Left Hand | 1 |
| 334381 | TU102 | 915mm | Right Hand | 1 |
| 334490 | TU102 | 1220mm | Left Hand | 1 |
| 334382 | TU102 | 1220mm | Right Hand | 1 |
| 334494 | TU102 | 1525mm | Left Hand | 1 |
| 334383 | TU102 | 1525mm | Right Hand | 1 |
| 334498 | TU102 | 1830mm | Left Hand | 1 |
| 334384 | TU102 | 1830mm | Right Hand | 1 |

* Non Standard sizes available on request