

SAGA²

gerflor.com



Gerflor[®]
theflooringgroup

SAGA²

1989

In 1989, Gerflor pioneered the development of the Saga tile - a resilient floor tile, laid with a tackifier adhesive that could be easily lifted and replaced.

With quick and easy installation, combined with flexible and modern designs, the system soon became popular in offices and other applications where access to the subfloor was important.



2009

In 2009, Gerflor introduces Saga² - a new concept in modular flooring with unrivalled product performance.

You no longer have to choose between resistance and acoustics!

Strength of a compact tile

Calendered interlayer

The tile overcomes the difficulty of many irregular subfloors and prevents their indentations transferring to the surface

- Ideal for raised access floors

An ideal replacement for carpet tiles

- Ideal for minimisation of dust allergies or when a clean surface is required

0.7 mm 100% PVC wearlayer

- Ideal for heavy traffic areas

Smooth ProtecSol® (polyurethane) treated surface

- ProtecSol®
- Easy maintenance, stain resistant and hygienic

The comfort of an acoustic tile

The vinyl and cork foam backing ensures:

15 dB

- Acoustic comfort



- Quiet and comfortable under foot

Suitable for Office & Administration, Hotel & Social Housing applications - New projects and Refurbishments: position and reposition Saga² tiles as you please!

Ease of access to electrical and computer systems

Easy modularity, thanks to the light weight of the tiles (5.6 kg/m²) and the simple use of a vinyl adhesive when installed



Offices & Administration, Hotels, Retail & Social Housing, Access floors

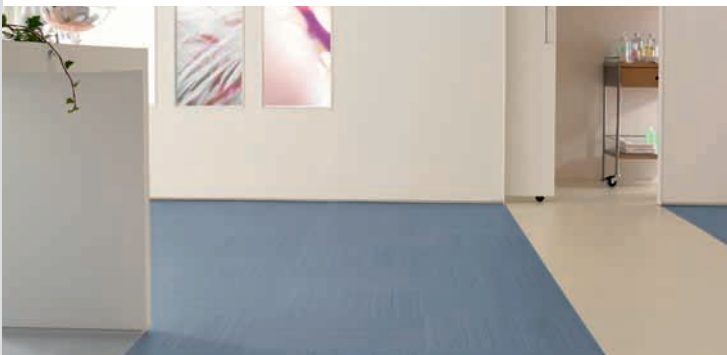


Design and styling ideally suited to offices and administration areas

- A neutral and natural pallet to create a more comfortable atmosphere.
- Natural wood and textiles.
- many light or honey tones which give softness and bring light into work spaces.

Beige colours

- to calm the spirit in places full of daily stress.



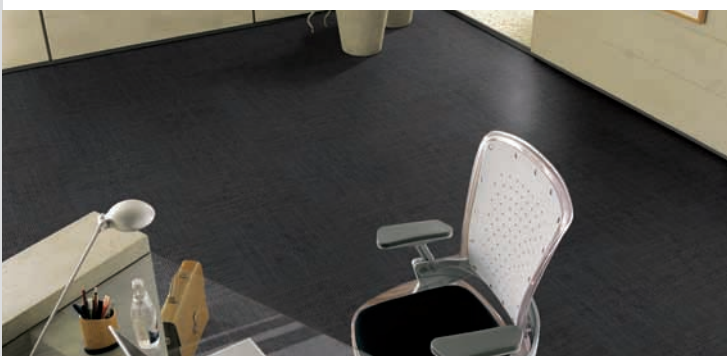
Freshness of blue tones

- to regenerate the spirit.



Grey and marbled shades

- for a contemporary style.

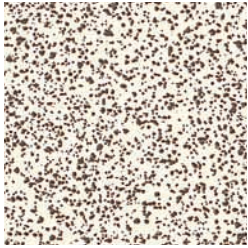


Chic dark wood

- for spaces with a strong character.

SAGA²

 Removable tile with vinyl and cork foam backing



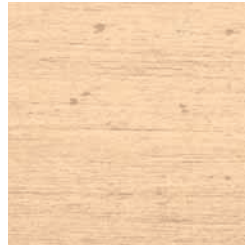
0004 Diva White



0013 Classic Stone



0016 Kadina Soft*



0006 Opalon Light



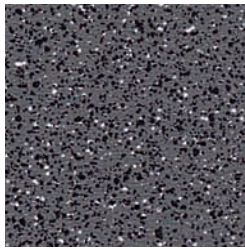
0007 Natural Beech



0014 Urban Stone



0015 Concrete



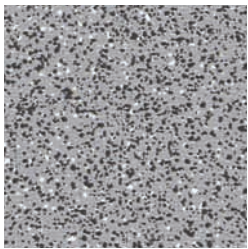
0001 Diva Dark Grey



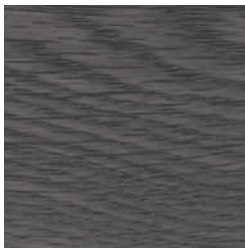
0008 Honey Beech



0024 Barma Pure



0002 Diva Grey



0012 Silver Oak



Saga²



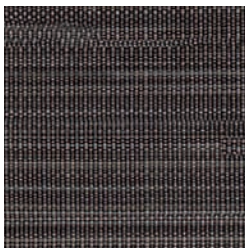
0005 Opalon Medium



0009 Nordica Beech



0021 Barma Sweet



0023 Barma Mystery



0010 Stripe Wood



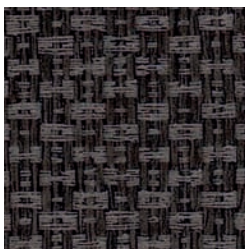
0018 Kadina Nature*



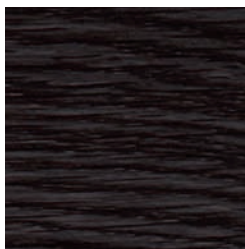
0022 Barma Cosy



0019 Kadina Ice*



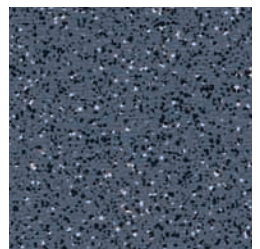
0017 Kadina City*



0011 Dark Oak



0020 Barma Lagoon



0003 Diva Blue

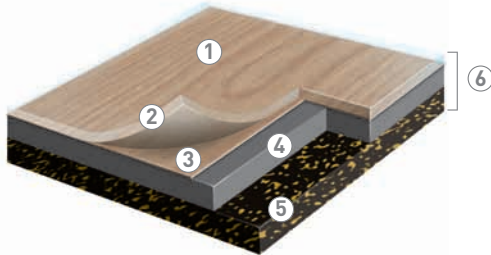
* Product availability: please contact us.

The images of floorcoverings in this catalogue have been reproduced as faithfully as printing technology permits.



SAMPLING SERVICE: Call Gerflor to request your samples!

TECHNICAL DATA



The flooring selected is a noise reducing, decorative, group T, vinyl flooring, available in 50 x 50 cm tiles.

It is made up of a transparent 0.7 mm thick surface layer with a decorative film, a calendered inner layer and a vinyl / cork sublayer.

SAGA² has a Protcsol® (polyurethane) treated surface for easier maintenance and incorporates Sanosol®, a bacteriostatic and fungistatic treatment. The total thickness of the tile is 4.6 mm.

SAGA² tiles can be completely recycled.

- 1 - Protcsol® treatment
- 2 - Transparent wearlayer
- 3 - Printed design
- 4 - Calendered interlayer
- 5 - Vinyl / cork sublayer
- 6 - Sanosol® treatment

SAGA²

DESCRIPTION

| | | | |
|-----------------------------|--------|------|-----------|
| Total thickness | EN 428 | mm | 4.60 |
| Thickness of wearlayer | EN 429 | mm | 0.70 |
| Weight | EN 430 | g/m² | 5595 |
| Tile size | EN 427 | mm | 500 x 500 |
| Number of tiles per package | - | - | 10 |

CLASSIFICATION

| | | | |
|------------------------------------|-------------|-------|--------|
| Norm / Product specification | - | - | EN 652 |
| European classification | EN 685 | Class | 34-42 |
| Fire rating | EN 13 501-1 | Class | Bfl-s1 |
| Static electrical propensity | EN 1815 | kV | 2 |
| Slip resistance wet: ramp test oil | DIN 51130 | Class | R10 |

PERFORMANCE

| | | | |
|---|-----------------|---------|-----------|
| Wear resistance | EN 660.2 | mm³ | ≤ 2 |
| Wear group | EN 651 | - | T |
| Impact sound insulation | EN ISO 717-2 | dB | 15 |
| Dimensional stability | EN 434 | % | ≤ 0.15 |
| Residual indentation | EN 433 | mm | 0.18 |
| Thermal conductivity | EN 12524 | W/(m.K) | 0.25 |
| Colour fastness | EN 20 105 - B02 | degree | ≥ 6 |
| Chemical products resistance | EN 423 | - | OK |
| Anti-bacterial and fungicidal treatment | - | - | Sanosol® |
| Surface treatment | - | - | Protcsol® |

CE MARKING

| | | | | | | |
|----|----------|---|--|--|--|--|
| CE | EN 14041 | - | | | | |
|----|----------|---|--|--|--|--|

INSTALLATION INSTRUCTIONS

A bonding primer compatible with the preparation product (sealant) must be applied on the subfloor. Tackifier emulsion adhesive must be applied in a single coat using a finely notched spreader (150 gr/m²). Installation at 90° as mentioned on the packages. The tiles must be removed from their box at least 24 hours before laying and stored in the room.

Minimum ambient temperature: 10°C, maximum: 30°C. Minimum subfloor temperature: 10°C, maximum: 22°C.

The flooring contractor is responsible for laying the flooring. This laying must be carried out according to best practice.

Installation advice is available from our technical department.

MAINTENANCE

Maintenance should be carried out regularly to retain the appearance and durability of the floor. The floorcovering should be maintained with regular sweeping and damp mopping using a neutral cleanser, or machine scrubbing with an appropriate pad. Further maintenance instructions are available upon request.

Not suitable for rubber furniture or chair legs - may leave permanent marks.



COMMITTED TO SUSTAINABLE DEVELOPMENT

Gerflor recognizes the importance of being proactive and creating new ways to achieve sustainable development. This is why Gerflor is devoting substantial resources to environmental research.

Gerflor achievements can be summarized as follows:

HEALTH & SAFETY

Vinyl is a safe material largely used in the automotive, food packaging, healthcare and construction industries and for tools, medical disposables, which come into close and intimate contact with humans.

Gerflor uses the same grade of material to produce its floorcoverings.

- **No heavy metals, no solvent based inks, no phthalates and components rated as carcinogenic, no formaldehydes, no PCP.**
- No substance potentially subject to any REACH (Registration, Evaluation and Authorisation of Chemical) restrictions.
- **Low VOC emissions:** on average more than 70 % lower than European standards.
- **Fire resistance:** vinyl does not help fire spread and does not release toxic gases like chloride (Cl2) and far less carbon monoxide (CO) than any other type of flooring.



Health & Safety



Committed for future generation



Recycling

RECYCLING

Vinyl is one of the only building materials that is **100% recyclable**. As a specialist vinyl flooring manufacturer, Gerflor has developed recycling programs for:

- **Post industrial waste recycling:** almost 100% of our manufacturing waste is recycled.
- **Post installation waste recycling:** In Europe Gerflor has started to organize the collection of post installation waste from large projects for recycling.
- **Post consumer waste recycling:** Gerflor vinyl floorings are fully recyclable at the end of their life and qualify for credits under many internationally accredited Green Building Schemes.



Second life product: It used to be a vinyl floor..



ISO 14001

ISO 14001

In Europe, less than 50% of manufacturers have achieved an ISO 14001 certification and Gerflor is one of them.

Gerflor industrial sites are certified ISO 14001 and are committed to continuously improving their environmental performance in terms of: air protection, reduction of energy consumption.



Gerflor Tarare manufacturing plant



Life Cycle Analysis

LIFE CYCLE ANALYSIS

Life Cycle Analysis is regarded as the ultimate means by which all environmental impacts are measured and improved upon during a product's life cycle. This assessment includes manufacture, delivery, installation, cost of ownership and maintenance, ultimate disposal and recycling of all products.

All new Gerflor product ranges are developed using a full life cycle analysis model.

- In Europe, Gerflor is actively involved with the ERFMI (European Resilient Flooring Manufacturer Institute) in preparing EU wide Life Cycle Assessment of a broad range of flooring types and specifications. From this study, a series of Environmental Product Declarations have been produced.
- In France, Gerflor has been involved with the SFEC to meet the HQE requirements.
- In the UK, all Gerflor products which match the BRE generic flooring specifications have been given either A or A+ ratings, with A+ representing the lowest environmental impact possible.



FDES: Environmental Product Declaration in France



green building council australia
MEMBER



gerflor.com

ARCHITECTURE
DECORATION
SPORT
TECHNOSPECIFIC

ASIA: Gerflor Asia

Tel: +852 9222 6355 - Fax: +852 3006 1449

e-mail: gerflorasiam@gerflor.com

AUSTRALIA/NEW ZEALAND: Gerflor Australasia Pty. Ltd

Australia Tel: 1 800 060 785 - New Zealand Tel: 0 800 630 119

e-mail: gerflor@gerflor.com.au

AUSTRIA/SWITZERLAND: Gerflor GmbH

Tel: +43 (0)72 29/70 800-0 - Fax: +43 (0)72 29/70 800-218

e-mail: austria@gerflor.com - switzerland@gerflor.com

BELGIUM/LUXEMBURG: Gerflor Benelux

Tel: +32 (0)3 766 42 82 - Fax: +32 (0)3 766 29 14

e-mail: gerflorbelgium@gerflor.com

CANADA: Gerflor International

Tel: +1 450 538 9828 - Fax: +1 450 538 9827

e-mail: gerflorcanada@gerflor.com

CHINA: Gerflor China

Tel: +86 21 6357 8818 - Fax: +86 21 6357 8998

e-mail: gerflorchina@gerflor.com

FINLAND : Gerflor OY

Tel: +358 (0) 10 617 5150 - Fax: +358 (0) 10 617 5152

e-mail: info@gerflor.fi

FRANCE: Gerflor - Service Express:

 N°Azur 0 810 569 569  N°Azur FAX 0 810 569 570

PREX APPEL LOCAL

PREX APPEL LOCAL

e-mail: contactfrance@gerflor.com

GERMANY: Gerflor Mipolam GmbH

Tel: 0 22 41-25 30-0

e-mail: GerflorMipolam@Gerflor.com

Kunden-Service: kundenservice@gerflor.com

Tel: 0 22 41-25 30-131 - Fax: 0 22 41-25 30-100

SAT Service und Anwendungstechnik: Technik@Gerflor.com

Tel: 0 22 41-25 30-555 - Fax: 0 22 41-25 30-550

IRELAND: Gerflor Ltd

Tel: +353 (0) 42 966 1431 - Fax: +353 (0) 42 966 1759

e-mail: gerflorirl@gerflor.com

ITALY: Gerflor S.p.A.

Tel: +39 02 90 78 60 12 r.a. - Fax: +39 02 90 42 74 84

e-mail: gerfloritalia@gerflor.com

LATIN AMERICA (Brazil): Gerflor América Latina

Tel: +55 11 38 48 20 20 - Fax: +55 11 38 48 20 23

e-mail: gerflor@gerflor.com.br

MIDDLE EAST: Gerflor Middle East

Tel: +966 3 847 1779 - Fax: +966 3 847 1781

e-mail: gerflorME@gerflor.com

NETHERLANDS: Gerflor BV

Tel: +31 (0)40 266 17 00 - Fax: +31 (0)40 257 46 89

e-mail: gerflorNL@gerflor.com

OTHER COUNTRIES: Gerflor International

Tel: +33 (0)4 74 05 40 00 - Fax: +33 (0)4 74 05 03 13

e-mail: gerflorcontract@gerflor.com

POLAND: Gerflor Polska Sp z o.o

Tel: + 48 61 823 34 01 - Fax: + 48 61 823 34 33

e-mail: info@gerflor.pl

PORTUGAL: Gerflor Iberia, SA

Tel: +351 21 843 95 49 - Fax: +351 21 846 55 44

e-mail: gerflorportugal@gerflor.com

RUSSIA: Gerflor Moscow Office

Tel: + 7 495 430-86-54 / 65 - Fax: + 7 495 430-85-46

e-mail: gerflorrus@mspk.east.ru

SCANDINAVIA: Gerflor Scandinavia a.s.

Tel: + 47 64 95 60 70 - Fax: + 47 64 95 60 80

e-mail: gerflorscand@gerflor.no

SPAIN: Gerflor Iberia, SA

Tel: +34 91 653 50 11 - Fax: +34 91 653 25 85

e-mail: gerfloriberia@gerflor.com

UNITED KINGDOM: Gerflor Ltd

Sample service: Contractuk@gerflor.com

Office Tel: + 44 (0) 1926 622 600 - Fax: +44 (0) 1926 622 616

USA: Gerflor North America

Tel: 877 GERFLOR (437 3567) - Fax: 847 394 3753

e-mail: info@gerflorusa.com



Health
& Safety



ISO 14001



Recycling



LCA
Life Cycle
Analysis

Committed to sustainable development

Gerflor[®]
theflooringgroup