

Quality
Style
Luxury



LAMINATE FLOORING CATALOGUE



Mission Statement

Kirk Marketing is dedicated to be the leader in our industry through commitment to our products, clients and staff with integrity and without compromise.

Goals

To provide the correct product and solution to the market place.

To have an unequalled service ethic

To set and maintain a high standard of product support and expertise to the flooring industry





QUALITY LAMINATE FLOORS



NEXT GENERATION FLOORS

Contents

M•FLOORS 2

FAUS 8

PEDROSS 15

M•TOOLS 21

PEDROSS

WOOD VENEERED SKIRTING



LAMINATE TOOLS



LAMINATE CLEANERS



QUALITY LAMINATE FLOORS

M-Floors is a quality German-manufactured range of laminate flooring represented by Kirk Direct. The M-Floors spectrum of laminate flooring ranges from affordable domestic laminate flooring (DIY 7mm, AC3, Class 31) meeting medium duty requirements through to general duty laminate flooring (8mm, AC4, Class 32) suitable for bedrooms, boutique stores, small offices, hotels and conference rooms.

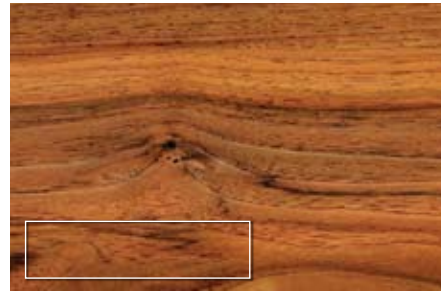
Laminate flooring has become a real trendsetter in South Africa, and not without justification as it is one of the most fashionable and durable floor coverings available today. Laminates are highly durable, attractive, clean and incredibly easy to maintain. Warm in winter and cool in summer and ideal for people who suffer from allergies. Stains like red wine, nail polish and even burning cigarettes don't trouble most laminates. In addition they are highly resistant to fading, impacts, scratching and abrasion resulting in years of good looks and service..

THREE IMPORTANT ELEMENTS

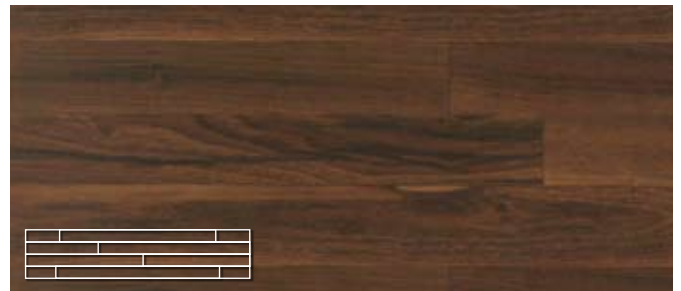
There are three essential considerations that must be observed when buying and using wood laminate flooring. These are:

- *Quality standard (selecting the correct product for your installation)*
- *Installation*
- *Maintenance*





7mm - MFMD7.PW
8mm - MFGD8.PW



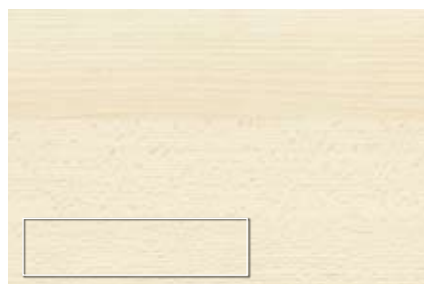
7mm - MFMD7.DC **8mm** - MFGD8.DC



7mm - MFMD7.SO 8mm - MFGD8.SO



8mm - MFGD8.BE



8mm - MFGD8.BL



8mm - MFGD8.WV

7mm Medium Duty Range

M•Floors Medium Duty Laminate flooring range meets the Class 31 (AC 3) classification which is a great value for money range suitable for bedrooms, and domestic applications.

The MFMD7 is suitable for light traffic areas. There is an 8 year guarantee for domestic use and 2 years for commercial use.



Plank	=	193mm x 1380mm	Class : 31, AC 3 - Thickness : 7mm
Box	=	9 Planks (2.397m²)	Guarantee : 8 Years domestic
Pallet	=	56 Boxes (134.24m²)	2 Years commercial

TECHNICAL DATA - SPECIFICATION AND GENERAL REQUIREMENTS MFMD - 7mm MEDIUM DUTY LAMINATE RANGE

DESCRIPTION	REQUIREMENTS	UNIT	TEST METHOD
Thickness	7,0 ± 0,5	mm	EN 13329
Level of use	31	-	EN 13329
Wear resistance	AC 3	-	EN 13329
Impact resistance	IC 1	-	EN 13329
Thickness swelling 24h	< 18	%	EN 13329
Formaldehyde emission	<0.05ppm	-	EN 717-1
Surface stain resistance	Grade 5, no visible change to surface		EN 438-2, 15
Light fastness	≥ Level 6 on the Blue Wood Scale (Blauwollskala) ≥ Level 4 on the Grey Scale		EN ISO 105-B02 EN 20 105-A02
Resistance to cigarette embers	Grade 4, no visible changes to surface		EN 438-2, 18
Fire resistance	C _{fl} -s1		DIN EN 13501-1
Elevation difference between connected elements	Average: ≤ 0.10mm Max: ≤ 0.15mm		DIN EN 13329
Edge straightness (bend)	≤ 0.3mm/m		DIN EN 13329
Space between connected elements	Average: ≤ 0.15mm / Max: ≤ 0.20mm		DIN EN 13329
Impression after consistent loading	No visible changes, ie. < 0.01mm impression in test with straight steel cylinder of radius 11.3mm		EN 433

8mm General Duty Range

M•Floors General Duty Laminate flooring range meets the Class 32 (AC 4) classification which can be used in classrooms, small offices, boutique stores, hotels, domestic applications and general commercial use.

The MFGD8 is a professional range popular amongst specifiers. Suitable for general duty traffic areas. There is a 12 year guarantee for domestic use and 3 years for commercial use.



Plank	=	193mm x 1380mm	Class : 32, AC 4 - Thickness : 8mm
Box	=	8 Planks (2.131m²)	Guarantee : 12 Years domestic
Pallet	=	56 Boxes (119.32m²)	3 Years commercial

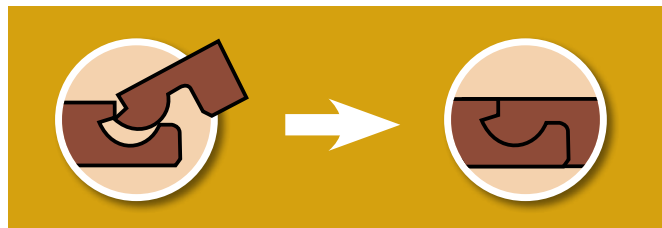
TECHNICAL DATA - SPECIFICATION AND GENERAL REQUIREMENTS

MFGD8 - 8mm GENERAL DUTY LAMINATE RANGE

DESCRIPTION	REQUIREMENTS	UNIT	TEST METHOD
Thickness	8,0 ± 0,5	mm	EN 13329
Level of use	32	0	EN 13329
Wear resistance	AC 4	0	EN 13329
Impact resistance	IC 1	0	EN 13329
Thickness swelling 24h	< 18	%	EN 13329
Formaldehyde emission	<0.05ppm	-	EN 717-1
Surface stain resistance	Grade 5, no visible change to surface		EN 438-2, 15
Light fastness	≥ Level 6 on the Blue Wood Scale (Blauwollskala) ≥ Level 4 on the Grey Scale		EN ISO 105-B02 EN 20 105-A02
Resistance to cigarette embers	Grade 4, no visible changes to surface		EN 438-2, 18
Fire resistance	C _{fl} -s1		DIN EN 13501-1
Elevation difference between connected elements	Average: ≤ 0.10mm Max: ≤ 0.15mm		DIN EN 13329
Edge straightness (bend)	≤ 0.3mm/m		DIN EN 13329
Space between connected elements	Average: ≤ 0.15mm / Max: ≤ 0.20mm		DIN EN 13329
Impression after consistent loading	No visible changes, ie. < 0.01mm impression in test with straight steel cylinder of radius 11.3mm		EN 433

Specifications and Installation

Click System

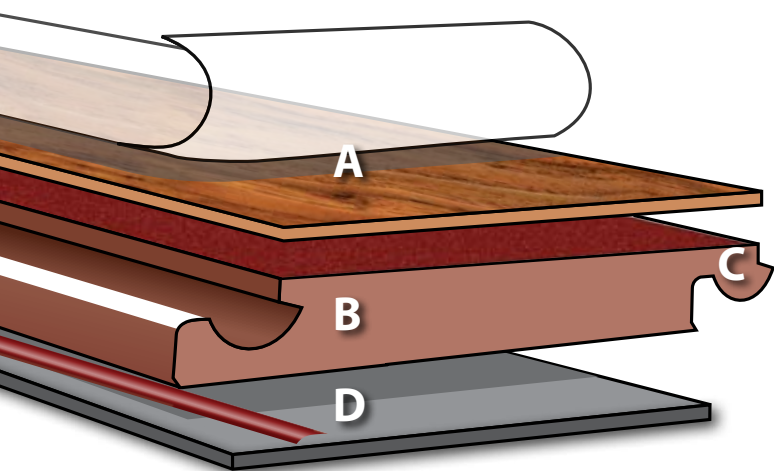


Kirk Trims

M•Floors has a comprehensive range of trims supplied by Kirk Direct to meet the curves, expansions, transitions, steps, ends and finishes required for laminate floors.

Panel Construction

M•Floors laminates consist of four stable layers which ensure the extraordinary durability and unique quality of M•Floors.



- A** The top surface of the flooring consists of a specially resistant protective overlay film. This is fused with an attractive resinated decorative film into an abrasion-resistant, hard-wearing surface.
- B** Extremely dense HDF fibreboard forms the supportive core (HDF, E1).
- C** All tongue-in-groove profiles are treated with a protective wax compound for protection against dampness and climatic influence.
- D** On the undersurface of the core a dampness impeding stabilization film ensures and preserves the high structural stability of M•Floors laminates.

Specifications on M•Floors

The core of the M•Floors laminate flooring has the following specifications:

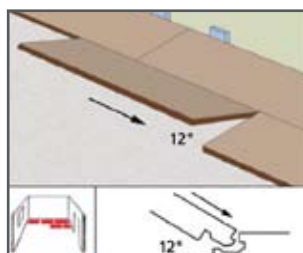
The core of each laminate is made from HDF (high density fibre) from fresh wood collected from ecological forest thinning operations. M•Floors laminates percentage of wood is consistently between 80 and 85%. No harmful substances such as halogen, chloride, PVC, PCB and dioxin are contained in the M•Floors laminate. The M•Floors laminate floor contributes to a natural and healthy room climate, in conforming to the highest health standards and is particularly recommended for persons with dust allergies.

M•Floors laminate flooring is made up in panels which click together to create a laminate floor.

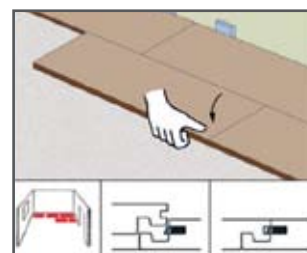
Express Clic System

New and improved short end joint

- Much easier to install
- Up to 50% quicker to install
-against other click systems
- No hammer, friction free installation
insures against edge damage
- Safe and stable



Insert the long end joint into the previously installed row, slide panel to the right until the joint ends meet.



Simply lower the panel applying light pressure until you hear the Express Clic System lock.

Quality Coding



High density Fibreboard (HDF - E1) 80-85% wood



Dampness impeding stabilizing film



Hard wearing (Class 31) and easy to clean



Abrasion resistant and suitable for castors



Load and impact resistant



Stain resistant



Flame resistant



Largely resistant to cigarette embers



Non fading, retaining brilliance for years



Suited for installation over sub-floor heating

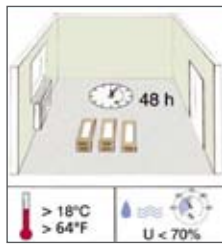


Easy to fit click system



Matching skirting profiles available

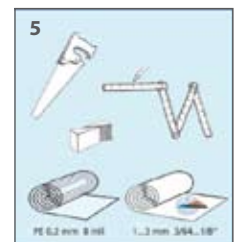
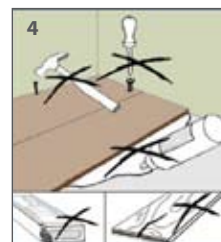
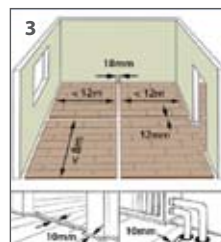
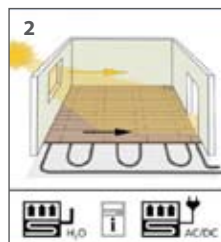
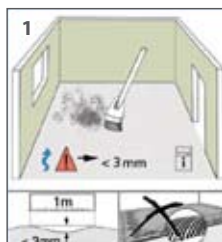
Preparation



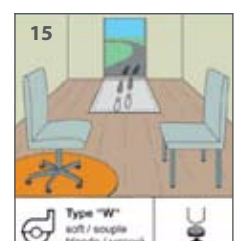
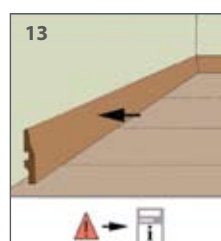
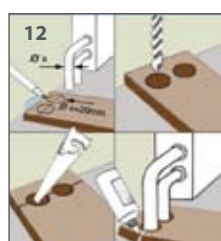
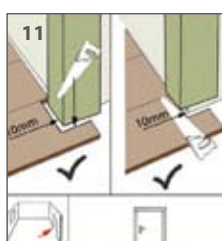
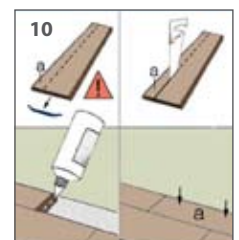
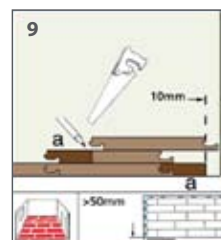
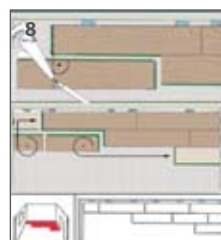
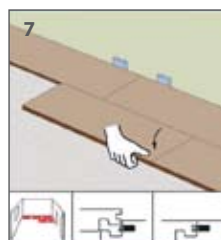
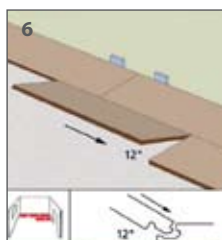
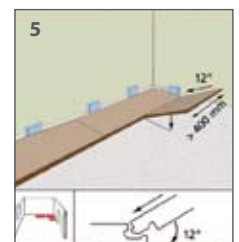
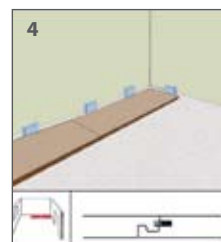
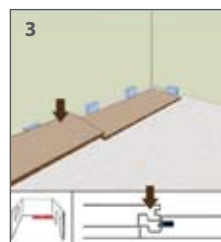
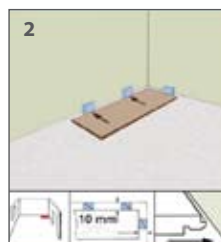
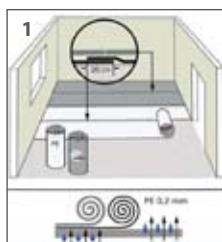
Before installation, M•Floors flooring should be stored horizontally in the room for at least 48 hours, unopened in its original packaging. Before, during and at least three days after installation, the room should be maintained in the following conditions:

Floor surface: min. 15°C • Air temperature: min. 18°C • Humidity: 50 - 75%

General information



Laying instructions





NEXT GENERATION FLOORS

NEW INNOVATION LAMINATE FLOORING

Why FAUS Floors?

FAUS is unlimited design and has a wide range of floors. Discover what suits you - whether its travertine, wood or rustic we have the perfect laminate floor for you. FAUS floors have guarantees that last from 15 years to a lifetime, only a floor made with the most advanced technologies can offer you such guarantees. If you want a floor that exudes comfort and quality for life, look no further. Discover the many advantages of a next generation floor. Discover FAUS.



FAUS Basic Line

GUARANTEE
15 YEARS
DOMESTIC USE

GUARANTEE
5 YEARS
COMMERCIAL USE

A floor that is real, long lasting and comfortable can only be achieved by using the most advanced laminate flooring technologies and patented innovations to enable FAUS to offer the most resistant and beautiful laminate floor on

the market. There is a FAUS floor for every project. FAUS is so versatile that it can be adapted to the most ambitious plans. Whatever the use or output of your space, we have a laminate floor just for you.



Norwegian Beech

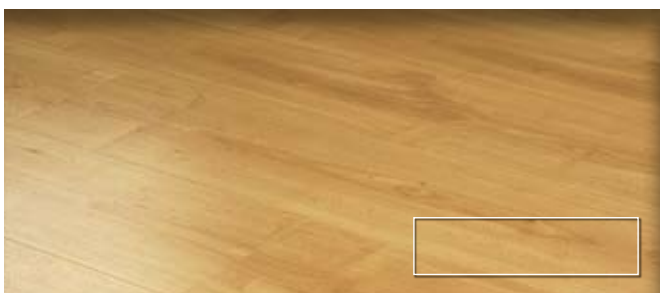
FAUS8.NB

Plank	=	1.189,5 mm x 289,0 mm
Thickness	=	8mm
Box	=	6 planks (2,06m ² /box)
Pallet	=	51 boxes (105,19m ² /pallet)

Wengue Nakuru

FAUS8.WN

Plank	=	1.189,5 mm x 289,0 mm
Thickness	=	8mm
Box	=	6 planks (2,06m ² /box)
Pallet	=	51 boxes (105,19m ² /pallet)



Maple Manila

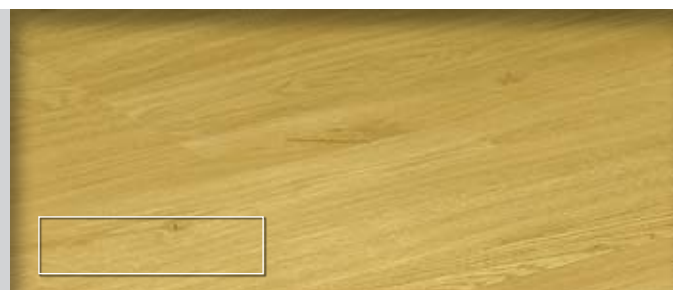
FAUS8.MM

Plank	=	1.189,5 mm x 289,0 mm
Thickness	=	8mm
Box	=	6 planks (2,06m ² /box)
Pallet	=	51 boxes (105,19m ² /pallet)

Ohio Oak

FAUS8.OO

Plank	=	1.189,5 mm x 289,0 mm
Thickness	=	8mm
Box	=	6 planks (2,06m ² /box)
Pallet	=	51 boxes (105,19m ² /pallet)



FAUS High Line

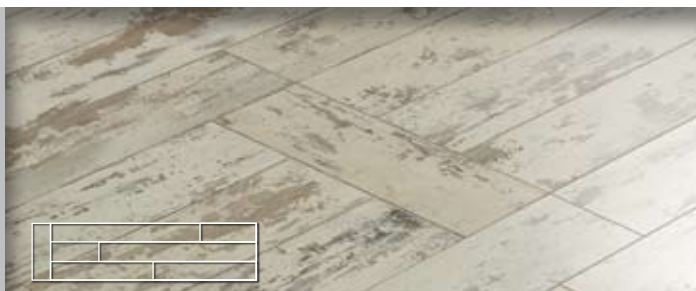
GUARANTEE
25 YEARS
DOMESTIC USE

GUARANTEE
5 YEARS
COMMERCIAL USE

Bohemia Oak

FAUS8.BO

Plank	=	1.180.6 mm x 292.4 mm
Thickness	=	8mm
Box	=	6 planks (2,07m ² /box)
Pallet	=	51 boxes (105,63m ² /pallet)



Tulsa Oak

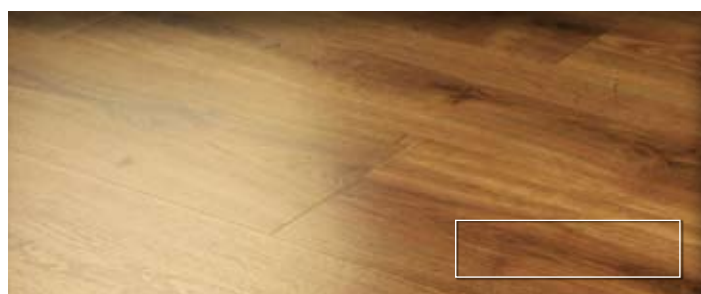
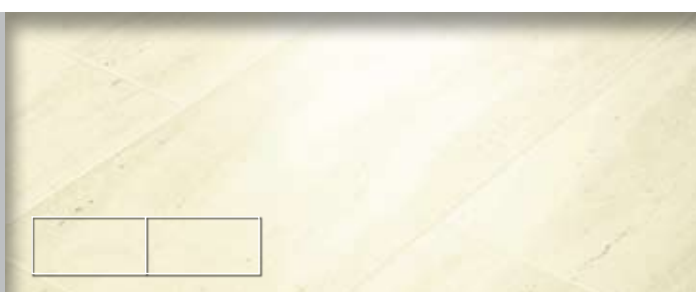
FAUS8.TO

Plank	=	1.185,5 mm x 289,0 mm
Thickness	=	8mm
Box	=	6 planks (2,06m ² /box)
Pallet	=	51 boxes (104,84m ² /pallet)

Travertinno Marittimo

FAUS8.TM

Plank	=	1.175,5 mm x 283,3 mm
Thickness	=	8mm
Box	=	6 planks (2,07m ² /box)
Pallet	=	51 boxes (105,46m ² /pallet)



Oxford Oak

FAUS8.OOA

Plank	=	1.185,5 mm x 289,0 mm
Thickness	=	8mm
Box	=	6 planks (2,06m ² /box)
Pallet	=	51 boxes (104,84m ² /pallet)

Oxide Negro New

FAUS8.ON

Plank	=	1.179.1 mm x 393.9 mm
Thickness	=	8mm
Box	=	5 planks (2,32m ² /box)
Pallet	=	42 boxes (97,53m ² /pallet)



FAUS Excel Line



Flanders Oak

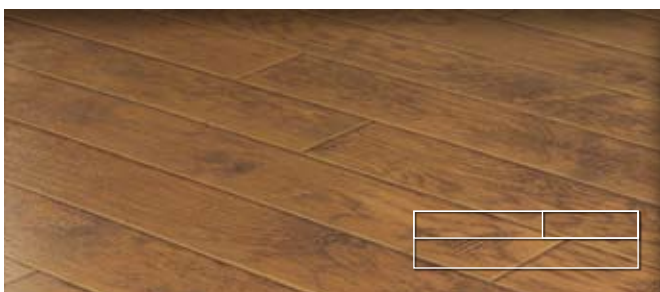
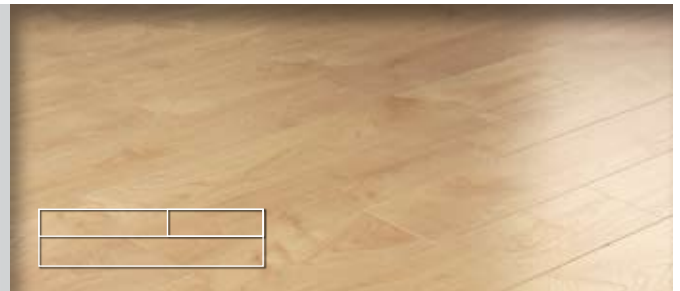
FAUS8.FO

Plank	=	1.181.4 mm x 292.6 mm
Thickness	=	8mm
Box	=	6 planks (2,07m ² /box)
Pallet	=	51 boxes (105,78m ² /pallet)

Maple Jordan

FAUS8.MJ

Plank	=	1.179,5 mm x 292,5 mm
Thickness	=	8mm
Box	=	6 planks (2,07m ² /box)
Pallet	=	51 boxes (105,57m ² /pallet)



Hickory Arkansas

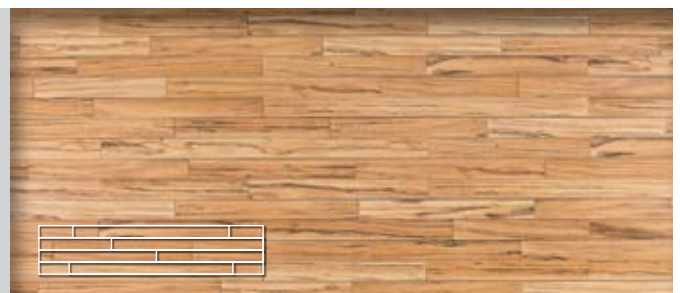
FAUS8.HA

Plank	=	1.181,5 mm x 292,5 mm
Thickness	=	8mm
Box	=	6 planks (2,07m ² /box)
Pallet	=	51 boxes (105,75m ² /pallet)

Tigerwood Cuiari New

FAUS8.TC

Plank	=	1.180,6 mm x 292,4 mm
Thickness	=	8mm
Box	=	6 planks (2,07m ² /box)
Pallet	=	51 boxes (105,63m ² /pallet)



Olive Teulada New

FAUS8.OT

Plank	=	1.181.4 mm x 292.5 mm
Thickness	=	8mm
Box	=	6 planks (2,07m ² /box)
Pallet	=	51 boxes (105,74m ² /pallet)

Faus Advantages

Imagine a floor that stands up to everyday wear, scoring and knocks. A stain resistant surface that is easy to clean and maintain, anti-allergic and healthy. A floor adapting perfectly to radiant heating systems

for a more comfortable home. Now, stop imagining and enjoy great quality of life with your FAUS laminate flooring. More advantages, more quality of life.



Wear resistant



Impact resistant



Scratch resistant



Environment friendly



Underfloor heating



Healthy



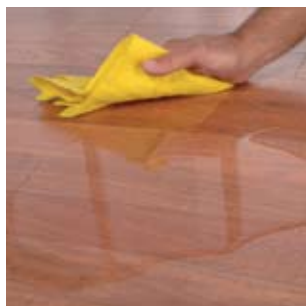
Stain resistant



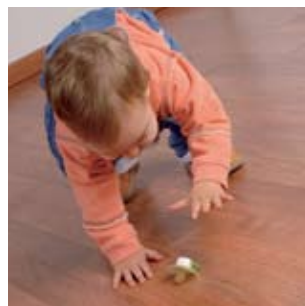
Cigarette resistant



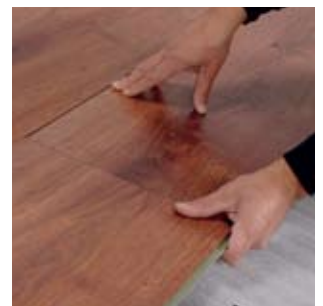
Does not fade



Water-resistant



Anti-allergic



Easy assembly



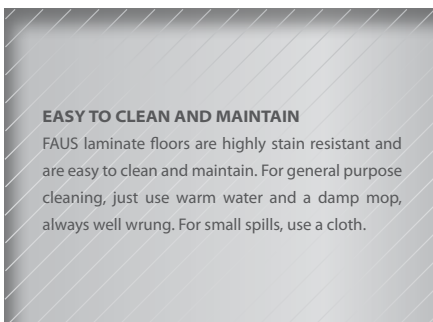
Easy clean

You will no longer have to worry about those minor everyday incidents: stains, a cigarette or an object accidentally falling onto your laminate floor, they will simply not be a problem. Besides, they stand up to everyday wear and tear, sunlight and small spills of water. They are easy to clean and lay, ideal for people with allergies. These are just some of the advantages of FAUS floors.

Laying and Maintenance

Quick, easy and efficient. FAUS laminate floors are easy to lay thanks to the system whereby the planks fit in with just a simple move. Besides, their special width means they are even quicker to lay, reducing

installation time, and more efficient, as the total number of surface joints is also reduced. Each box comes with instructions explaining the process step by step, and a list of necessary tools for laying.



Interactive Innovations

Realfeel

A 3D surface that looks and feels real. Touch our floors, feel the grain and texture of the wood and the texture of the tile, enjoy the feel of the real thing with all the advantages of a laminate floor.

Jointguard

A comprehensive joint protection system. Thanks to this system the joints lie just beneath the floor surface for greater protection. The system protects the edges from friction and direct knocks and prevents dirt from accumulating in the joints, giving your floor a longer life.

Microbevel

Underscoring the lines between the strips. This exclusive

innovation faithfully reproduces the separations between the boards in the plank. The result is a parquet floor that looks as if its made of individual boards, with all the advantages of the latest generation laminate floors.

Interplank continuity

Longitudinal fitting of the design between two planks. This technology keeps the design flowing from one plank to another, i.e. the wood grain continues without interruption, achieving a real life flooring effect with no breaks.

Longstrip continuity

Longitudinal fitting of the design between three planks uninterrupted design of up to three meters in length creating the effect of long planks of wood.

Underlay for Laminate Flooring

White Plastic

MFPW200.10

M•Floors 200 Micron White Plastic - 10m x 1,5m roll

MFPW200.20

M•Floors 200 Micron White Plastic - 20m x 1,5m roll

MFPW200.30

M•Floors 200 Micron White Plastic - 30m x 1,5m roll



200 Micron plastic offers very good protection against moisture ingress when installed with laminate flooring. The Plastic Sheeting is layed directly on the smooth screed to protect the underlay and laminate floor from any threat posed by moisture. The Plastic Sheeting is used in conjunction with 2mm Aerothene.



Aerothene Foam Underlay

MFFU2.10

M•Floors 2mm Aerothene Foam Underlay - 10m x 1,5m roll

MFFU2.20

M•Floors 2mm Aerothene Foam Underlay - 20m x 1,5m roll

MFFU2.100

M•Floors 2mm Aerothene Foam Underlay - 100m x 1,5m roll

Aerothene Foam Underlay and 200 Micron Plastic Sheeting offers a moisture barrier, preventing moisture damage and mould build up, as well as a degree of cushioning for the flooring's flexural properties. This two part system gives a very good moisture barrier, if this is a concern.

Combi Underlay

MFCU2.10

M Floors 2mm Combi Underlay - 1,5m x 10m roll (12,5m2)

MFCU2.20

M Floors 2mm Combi Underlay - 1,5m x 20m roll (25m2)

MFCU2.100

M Floors 2mm Combi Underlay - 1,5m x 100m roll (125m2)



The Combi Underlay system has 80 Micron Plastic adhered to a 2mm HDPE Aerothene foam. This one part system offers sufficient moisture protection for most laminate flooring applications and is much faster to install than the Plastic and Foam separate.

PEDROSS

WOOD VENEERED SKIRTING

Pedross is a family business from Italy, which was founded in 1956. They have a wide range of products, and we currently stock the Clipstar skirting. Skirting is designed to accommodate transition between wooden flooring and other surfaces as well as allowing for a movement gap required for laminate or wooden flooring. It can also be used with tiles, carpets and basically any floor type. Most skirtings are fixed either by screw fixing or gluing the board to the wall. Pedross Clipstar has a unique way of mounting skirting boards to the wall. Invisible mounting is made easy with this push and press mechanism, even if the walls are uneven. The system also leaves room for adjustment. Easy repeated attachment and detachment of the boards round off the systems functionality. The system can be used with all skirting boards from 60mm to 90mm in height and 14mm to 22mm in thickness.

THE 7 BENEFITS OF PEDROSS CLIPSTAR

- P** Push and press system
- E** Environmentally friendly
- D** Diversity in colours
- R** Repeated mounting and removal possible
- O** Optimum adapting to uneven walls
- S** Stain, scratch and chemical resistant
- S** Stainless steel clips for easy installation



Pedross Wood Veneered Colour Chart

Pedross Wood Veneered Colours are classed in wood type by a classification number (C1, C2...)

The higher the number the rarer or more exotic the wood type.



Makassar

C8.MK



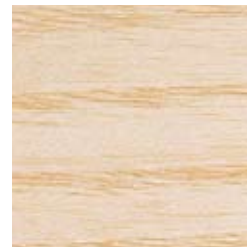
Cherry

C1.CH



White Ash

C2.WA



Ash

C1.ASH



White Oak

C2.WO



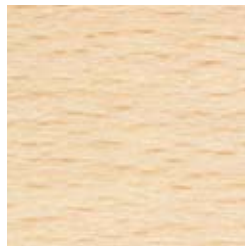
Oak

C1.OA



Alder

C1.ALD



Unsteamed Beech

C1.BC



Moabi

C5.MO



Birch

C1.BI



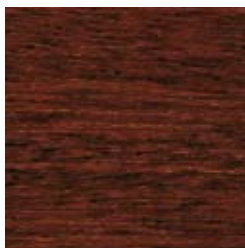
Walnut

C2.WAL



Ipe

C5.IPE



Jarrah

C2.JA



White Covered

C2.WC



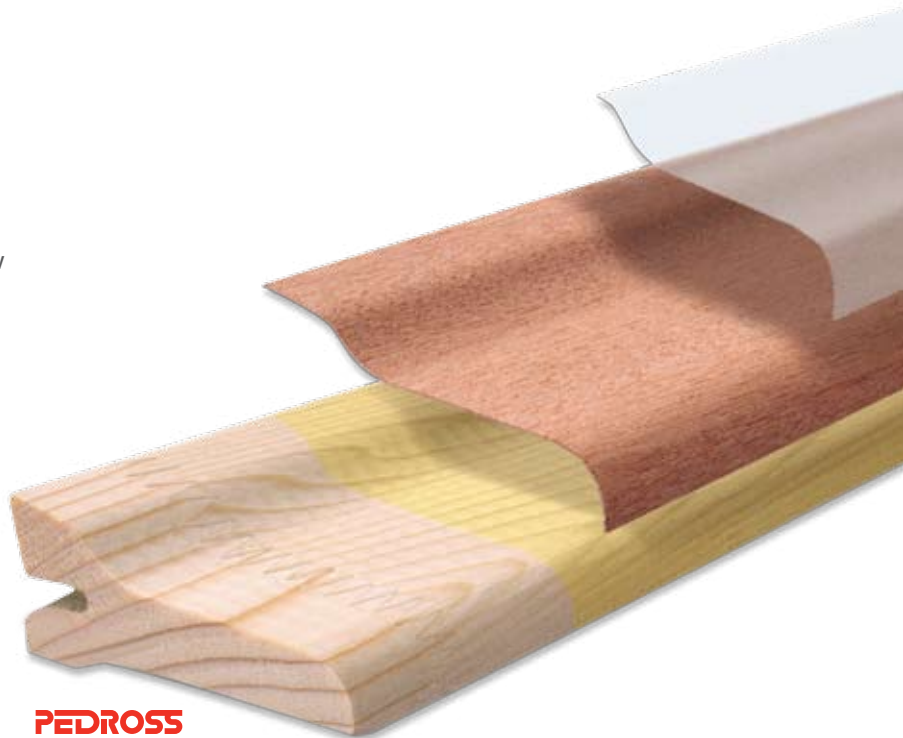
Wenge

C4.WG

Composition

Pedross wooden veneered skirtings are Eco friendly due to the fact that they are not solid wood but composed of the following:

- Finger jointed spruce wood which ensures low warping and guarantees the highest stability
- Hotmelt adhesive (Bonding agent)
- 2mm Prime quality hardwood veneer
- Protective finish layer. Surface treatment with UV varnish which is resistant to cleaning agents, chemicals, scratches, UV and abrasion
- Stainless steel clips used to mount skirting in place. It is possible to sand off smaller damages with this product.



Wood Veneered Skirtings and Quadrants

Our veneered profiles are natural products which are produced in an environmentally friendly way. In manufacturing, only indigenous spruce wood from sustainably managed forests (PEFC and FSC certified) is used. The surface of the PEDROSS profiles is made out of high quality double ground real wood veneers which are oiled or UV light varnished. The choice is

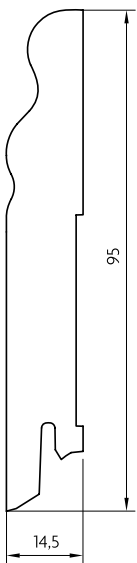
large and widespread. There are now 79 indigenous and exotic wood species available. New wood types are constantly being added so we can fulfil every customer need. The surface is treated without any heavy metals or formaldehydes and this ensures excellent veneer protection and easy care. The standard lengths for the veneered profiles are 250 cm.

The skirtings and quadrants are available in 2.5m lengths. Kirk Direct stocks 15 of the most popular colours in the profiles below.

Skirting Board

WVS 9515C.colour

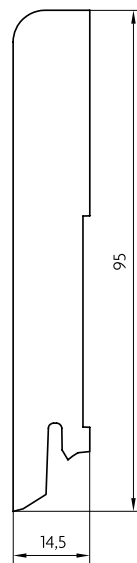
95mm x 14.5mm



Skirting Board

WVS 9515.colour

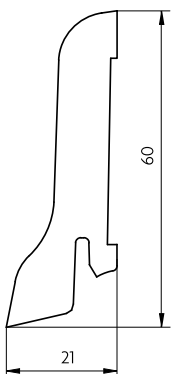
95mm x 14.5mm



Skirting Board

WVS 6022.colour

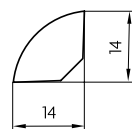
60mm x 21mm



Quadrant

WVQ 14.colour

14mm x 14mm



Clipstar Advantages & Mounting

PEDROSS CLIPSTAR is a new and technologically unique way of mounting skirting boards to the wall. The system can be used for all skirting boards from 60mm - 90 mm height and 14mm - 22 mm thickness.

The use of first grade materials in combination with its flexible application ensures ease of use for craftsmen as well as handymen.

Advantages

- Unique "Push & Press" System
- Optimum adapting to uneven walls
- No unsightly gaps, screws or permanent fixing
- One system for all profiles from 60mm - 90 mm in height and 14mm - 22 mm in thickness
- Steel clips made of spring steel with corrosion protection
- Cable duct to hide unsightly cables up to 7 mm ø
- Cable laying after initial installation possible
- No way for cables to sink down into expansion gap
- Repeated mounting and removal of skirting boards or exchange of boards without the need of any tools
- Time saving fixing to wall due to attachment extension
- Mounting in combination with inner and outer corner pieces as well as end pieces possible
- Suitable for all floor types (solid wood, laminate, tiles, carpets etc...)

Push & Press

The protected 'Push & Press' mechanism (registered for protected design patent 202005005425.9) makes invisible mounting easy even when walls are uneven. The system also leaves room for adjustability, easy repeated attachment and detachment of the skirting boards.



Installation in a few easy steps



Align stainless steel clip and mark hole



Drill hole



Push in wall plug



Align clip and screw in place



Clip in wire/s



Align skirting



Clip on skirting



Presto!



Resulting in a clean, easy and neat finish

MDF Skirting System

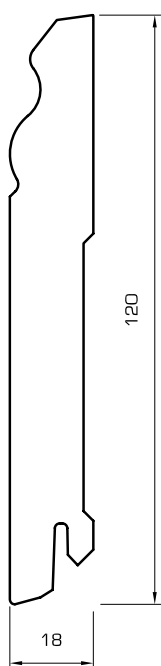
LAMINATE MOULDINGS MDF

Our foil wrapped mouldings are the perfect finish for all common laminate floors. The support material for our foil wrapped profiles is MDF (Medium Density

Fibreboard). Our laminate moulding range is available in a wide array of decorative foils. The standard length for foil wrapped skirtings is 250 cm.

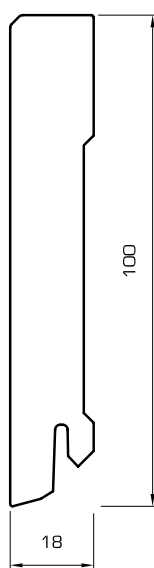
MDF5911

MFS120.colour



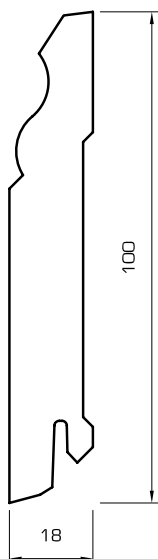
MDF5913

MFS100.colour



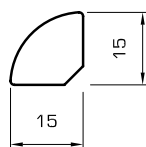
MDF5535

MFCS100.colour



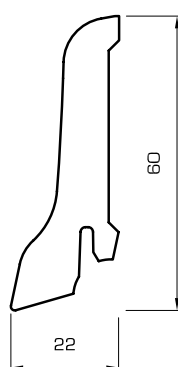
MDF6073

MFQ15.colour



MDF6060

MFS60.colour



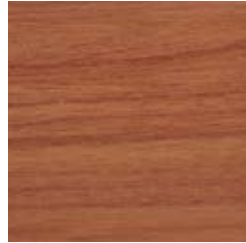
MDF Colour Chart



Aged Oak AO



Pecanwood PW



Oxford Oak OOA



Old Oak OO



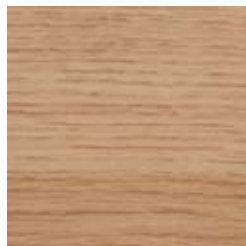
Beech Be



Dark Maple DM



Light Oak LO



Warm Oak WOA



Light Maple LM



Maple Ma



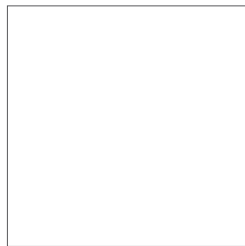
Cherry Ch



Whitewashed Oak WO



Wenge We



Eggshell White EW

MDF Installation in a few easy steps



Align stainless steel clip and mark hole



Drill hole



Push in wall plug



Align clip and screw in place



Clip in wire/s



Align skirting



Clip on skirting



Presto!



Resulting in a clean, easy and neat finish



LAMINATE TOOLS



LAMINATE CLEANERS

M-TOOLS is a comprehensive range of DIY and professional tools, many of them unique in the marketplace. Kirk is continually looking for new and improved tools to introduce into the range, staying ahead of local and world trends.

M-CHEM is a comprehensive range of quality laminate care chemicals. Extensive market research and tests have been done over the last two years to allow Kirk to confidently introduce their unique range of laminate cleaners, covering almost every eventuality and laminate type.



M•Floors Laminate Cutter MFLC

- Neat cut without tearing of laminate layer
- No breathable dust
- No noise
- No sharpening required – EVER.

Max cutting width: 210mm. Cuts up to 11mm thickness.



Laminate DIY Fitting Kit MTLDIYKit

A kit comprising wedges, pull bar and tapping block used to install laminate flooring. Use 1kg machinist hammer with block.

20 Plastic Wedges MTPW.20

Plastic wedges used as spacers against walls when laying laminate floors or for general building.

DIY Pulling Bar MTPBDIY

Pulling laminates tightly together in difficult to reach places. Use 1kg machinist hammer with Pulling Bar.



Professional Pull Bar MTPBPro

Used by professional laminate and wood fitters. Pulling the laminate and wood together in difficult to reach areas assisted with 1kg hammer.

Professional Hit Pull Bar MTHPPro

Alternative version of the professional pull bar. Once again assisted with 1kg hammer.



Wood/Engineered Wood Floor Strapper MTWFS

A strapping system used for installing solid and engineered wood flooring. The strap is tightened to ensure good adhesion of the planks by pulling the tongue and groove together, to create a quality finish.

- Take care not to fasten too tightly.

Foam Knee Pads MTFKP

Knee pads provide comfort whilst working on your knees. The thick foam is soft and very absorbent for extra comfort, when laying laminate floors.





800g Claw Hammer MTCH.800

Multi purpose hammer used to drive nails and other fasteners into surfaces. Also used to extract fasteners and carpet grippers

1kg Machinist Hammer HTMH.1

Hammer is used in conjunction with a block to close gaps in laminate and wood floors. General purpose for builders

2kg Block Hammer MTBH.2

A bulky hammer used for heavy striking. To break concrete or bricks in surface preparation. To strike chisels.

19mm Chisel with Plastic Handle MTCPH.19

56mm Chisel with Plastic Handle MTCPH.56

Two sizes of chisel with plastic handle for hand protection during use. Used to remove old adhesive in refurbs or general obstructions during surface preparation. Also used for wall chasing before laying plumbing or electrical pipes.



Rubbing Stone with Handle MTRSH

This tool is used to rub away slight unevenness in floors before tiling or laying laminate and vinyl flooring. In the latter two flooring types, even surfaces are extremely important. The rubbing stone can be unclogged using a wire brush.

25cm Technical Shaping Template

MTTST.25

A hand tool used to acquire a professional finish around obstructions like door frames. The template is pressed against the object and the pins take on the shape of the object. This shape is transferred on to the laminate board and the shape is cut out using a combination of hand saws and/or an electric jig saw. This provides a professional finish.



Jigsaw MTJS.610

Metabo STE80 610 Watt for cutting laminate boards.

Jigsaw Blades MTRCD.5

Reverse Cut Blades - 5 / pack

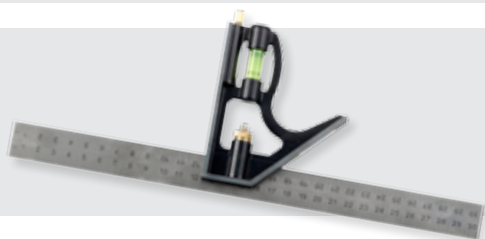


Undercut Saw - 300MM MTUCS.300

This tool is used to trim doors or other wooden obstructions without having to remove them from fixtures. The double sided stiff blade ensures a neat finish. A piece of the laminate board is used as a spacer/ guide to make sure the door is cut at the right height. Replacement blades are available.

Handsaw MTTSAW.350

M Tools Tenon Saw - 350mm for cutting laminate boards.



Combination Square MTCS.300

M Tools Combination Square - 300mm for marking 90° and 45° angles on laminate boards.

600/1200mm Aluminium Spirit Levels

MTASL.600/1200

Standard spirit levels in two sizes to measure the levelness of a floor before you lay laminate flooring.



1000mm Aluminium Ruler with Level

MTARL.1000

A ruler with level attachment for measuring, levelling and marking lines on laminate boards.

30 & 50m Tape Measures MTTM.30/50

Two longer tape measures for larger areas.

3/5/8mm Heavy Duty Tape Measures

MTHTM.3/5/8

Various length tape measures with an automatic stop release button and extra strength metal tape.





18mm Utility Knife with Lockout Stop

MTKCL.18

Used for cutting carpets, laminate underlay and vinyl.

18mm Utility Knife with Manual Lockout

MTKCM.18

Used for cutting carpets, laminate underlay and vinyl

MTKB.10 - Spare Blades

Multi Purpose Cleaner MCMPC

Solvent blend cleaner for the removal of oil, grease and dirt on laminates and wood. Cleans most surfaces from laminate and wooden flooring to carpets.

Application:

- Always treat a small inconspicuous area first to ensure no damage.
- Using the appropriate dilution apply the multi purpose cleaner to the affected area using a microfibre pad/lambswool applicator pad, dampen and wipe.

Dilution guide:

lightly soiled floors	1-100 parts water
heavily soiled floors	1-3 or 5 parts water
General use	1-10 parts water

- DO NOT SATURATE! Buff with a dry cloth
- It is very important to remember that moisture should be kept to a minimum on laminate and wooden flooring.

Availability and Coverage:

1l, 5l and 25l. Coverage from 20m² per diluted litre upwards



Mclean M-CLEAN.750 (pronounced 'em clean')

Solvent based cleaner for removal of oil, grease and dirt from laminate floors and most other floor surfaces. MCLEAN is our MCMPC – multipurpose cleaner prediluted at 1-5 parts water and it is scented with a lemon/lime scent.

Application instructions for MCLEAN on laminate floors:

- Spray onto the infected area, wait a few minutes.
- Then use a damp cloth, microfibre pad or lambswool pad to remove excess and wipe clean.
- DO NOT SATURATE!!! Buff with dry cloth.

Facts to remember:

- 1l concentrate refill available – MCMPC.1
- Lemon/Lime scented in both spray and refill bottles.
- Refill guide is marked on 750ml bottle. (1-5 parts water)
- Easy to use spray bottle.





KIRK DIRECT SHOWROOM ADDRESS

GAUTENG (Head Office)

UNIT 2, Eastborough Business Park, Olympia Street,
Marlboro North (entrance opposite Delphi St.)

PO Box 235 Bergvlei 2012

Tel: +27 11 444 1441

Fax: +27 11 444 1165

sales@kirk.co.za

WESTERN CAPE

Unit 5 & 6 , Neutron Road, Atom Industrial Park,
Bellville Triangle, Cape Town, 8001

Tel: +27 21 949 2226

Fax: +27 21 949 4531

cap-sales@kirk.co.za

KWA-ZULU NATAL

45 Marseilles Crescent, 22 Kingfisher Park
Briardene, Durban, KZN.

Tel: +27 31 564 1175

Fax: +27 31 564 1143

kznsales@kirk.co.za

EASTERN CAPE

638 Govan Mbeki Avenue (entrance North Road),
North End, Port Elizabeth.

Tel: +27 086 054 7573

Fax: +27 86 6884 980

ecapesales@kirk.co.za

sales@kirk.co.za



www.kirkdirect.co.za