

superline 400

DUAL
electric water heaters



SUPPLY OF SUPERIOR

RELIABLE

DOMESTIC WATER HEATING
SOLUTIONS



DOMESTIC ELECTRIC WATER HEATERS



superline 400

DUAL
electric water heaters

product features

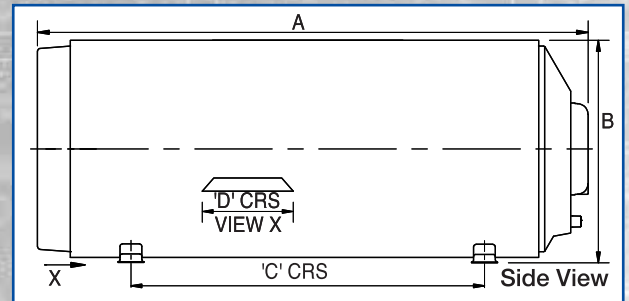
- The Kwikot Superline 400 Dual is a high pressure electric water heater available in a 50 litre, 100 litre, 150 litre, 200 litre and 250 litre and are SANS 151 **400kPa** approved.
- The inner cylinder is manufactured from enamel quality steel and is thermofused porcelain enamelled for corrosion protection and hygiene.
- A lower energy loss, a more efficient electric water heater. **B rating energy efficient.**
- The polyurethane insulation between the inner cylinder and the outer galvanised casement is **128%** thicker, resulting in the hourly standing heat loss decreasing from 108 watts per hour to 50 watts per hour, a 50% decrease on the 150 lt, versus previous D rated energy efficient water heaters.
- Renewable energy ready for a Solar Retrofit System or a Heat Pump.
- The units can be installed horizontally or vertically. (See product installation data).



Renewable energy ready connection

product specification data

Complies to SANS 151 Specifications and are SA Watermark listed.



Product Code	DSG -050-5	DSG -100-5	DSG -150-5	DSG -200-5	DSG -250-5
Capacity (Litres)	50	100	150	200	250
Element Rating (kW)	2	2	3	4	4
Operating Pressure (kPa)	Up to 400	Up to 400	Up to 400	Up to 400	Up to 400
Mass Empty (kg)	19	28	39	45	57
Connections Male Iron (mm)	20	20	20	20	20
Dimension A (mm)	535	932	1320	1331	1635
Dimension B (mm)	543	543	543	596	596
Dimension C (mm)	135	510	865	855	1145
Dimension D (mm)	355	355	355	355	355

product installation data

The Kwikot Superline 400 Dual must be installed in compliance with SANS 10254 Installation and Maintenance of Electric Storage Water Heaters. A Kwikot Temperature & Pressure Safety Valve and a Kwikot Drain Cock are both supplied with the water heater. A SANS approved Pressure Control Valve, Drip Tray and Vacuum Breakers must form part of the installation and must be purchased additionally. The Kwikot Superline 400 Dual water heater is IPX4 rated.

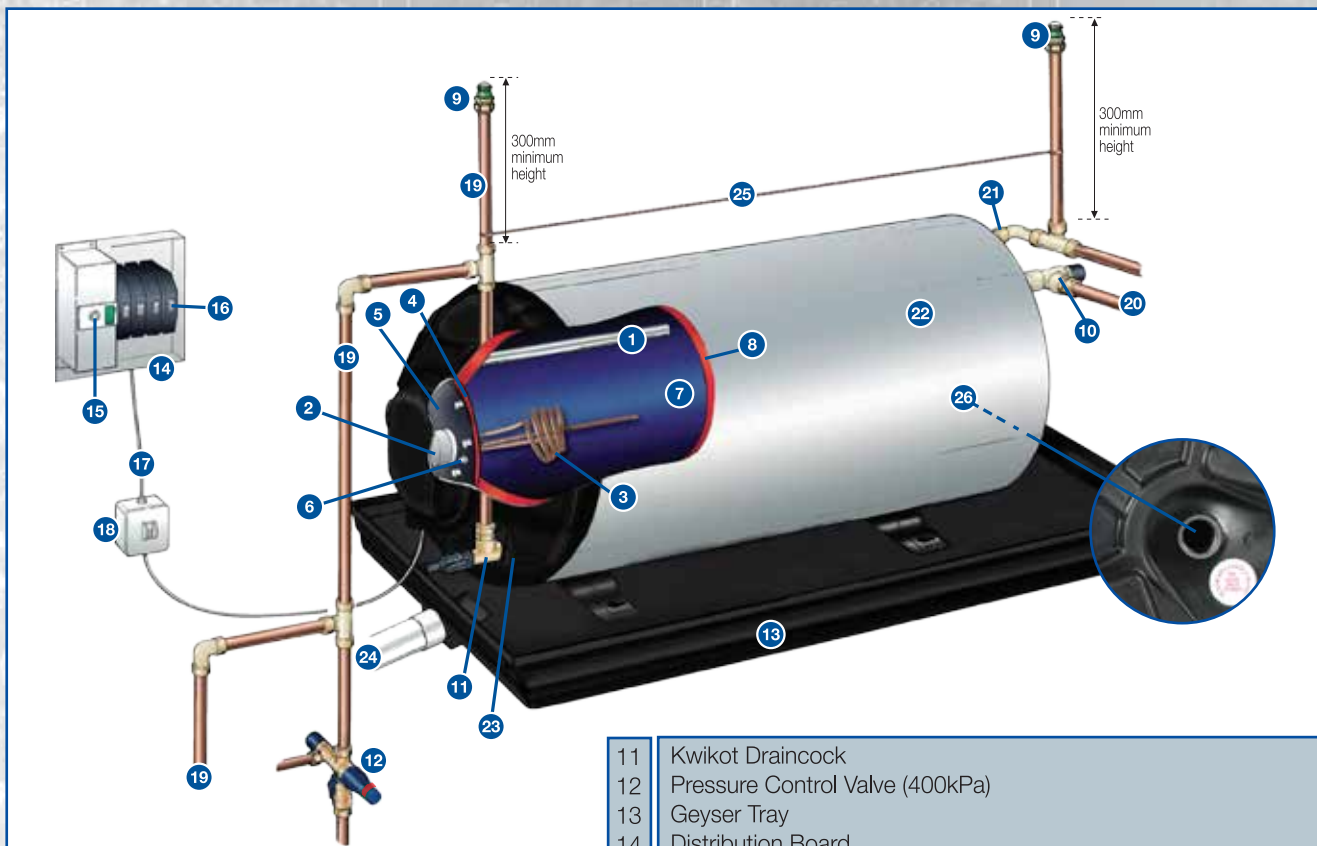
The 50lt, 100lt, 150lt and 200lt, can be installed horizontally on the floor (in the roof) and wall mounted vertically or horizontally left hand, or horizontally right hand, **except the 250lt. NB. The maximum wall mount geyser capacity is 200 litres, however the wall installation of a 200lt water heater is not recommended by Electrolux**, unless the reliability and strength of the wall is determined beforehand by a suitably qualified construction person. The 200lt can also be installed vertically using a floor stand. The weight of the water heater when completely full must be taken into account. **The 250lt geyser must be floor mounted or mounted vertically on a floor stand, which is available from Electrolux. The 250lt geyser must not be wall mounted.**

In a horizontal wall mounting installation, the brackets (feet) need to be moved by 90° to the alternative holes in the outer casement. In a vertical wall mounting installation, the brackets (feet) are not moved to the alternative holes in the outer casement.

Electrolux SA(Pty) Ltd cannot be held responsible should a water heater pull out or fall off a wall. The installation is the responsibility of the installer.

The following minimum installation clearance must be allowed for on each side in the event of having to remove the element, thermostat or the anode: 50 lt - 400mm; 100 lt - 600mm; 150 lt - 800mm; 200 lt - 1000mm and 250 lt - 1200mm.

product installation: horizontal



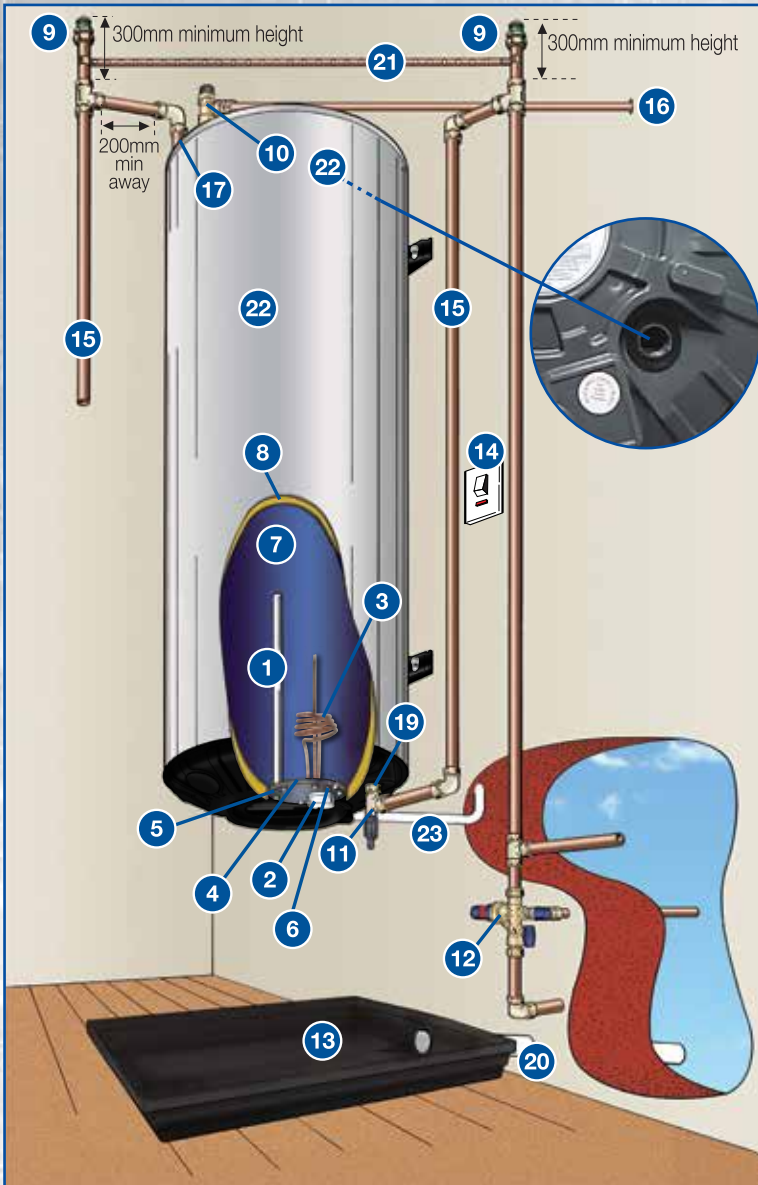
Product Description	
1	Anode
2	Kwikot Thermostat TH208, 20Amp
3	Kwikot Spiral Element
4	Flange Gasket (100mm)
5	Flange (100mm)
6	Earth Stud
7	Thermofused Porcelain Enamel Lining
8	Urethane Insulation
9	Vacuum Breaker
10	Kwikot Safety Valve (400kPa)
11	Kwikot Draincock
12	Pressure Control Valve (400kPa)
13	Geyser Tray
14	Distribution Board
15	Earth Leakage - 60 Amp
16	Geyser Circuit Breaker
17	Cable Size, Minimum of 2,5mm ²
18	Isolating Switch within 1m from Electrical Connection on Geyser
19	Copper Pipe
20	Overflow Pipe to Exterior of Building, 20mm Metallic
21	Hot Water Outlet
22	Kwikot Superline Dual Geyser (400kPa)
23	Cold Water Inlet
24	Geyser Tray Overflow Pipe, 50mm
25	Earth Bonding Strap between Hot and Cold Water
26	Renewable Energy Ready Connection



superline 400

DUAL
electric water heaters

product installation: vertical



Product Description

1	Anode
2	Kwikot Thermostat TH208, 20Amp
3	Kwikot Spiral Element
4	Flange Gasket (100mm)
5	Flange (100mm)
6	Earth Stud
7	Thermofused Porcelain Enamel Lining
8	Urethane Insulation
9	Vacuum Breaker
10	Kwikot Safety Valve (400kPa)
11	Kwikot Draincock
12	Pressure Control Valve (400kPa)
13	Geyser Tray
14	Isolating Switch within 1m from Electrical Connection on Geyser
15	Copper Pipe
16	Overflow Pipe to Exterior of Building, 20mm Metallic
17	Hot Water Outlet
18	Kwikot Superline Dual Geyser (400kPa)
19	Cold Water Inlet
20	Geyser Tray Overflow Pipe, 50mm
21	Earth Bonding Strap between Hot and Cold Water
22	Renewable Energy Ready Connection
23	Cable Size, Minimum of 2,5mm ²

product warranties

The period of warranty is from the date of installation providing that documentation of proof of installation is furnished, or alternatively from date of manufacture as determined from the serial plate on the end dome.

The warranty is subject to only genuine Kwikot replacement parts (spiral element and thermostat etc) been used whilst the inner cylinders are still under warranty. The warranties are applicable to South Africa, Namibia, Lesotho, Swaziland and Botswana and are subject to water conditions equivalent to main Metropolitan supply authorities.

- Five years on the inner cylinder.
- One year on the spiral element, thermostat, isolator switch, flange assembly plate and gasket.
- Two years on the Safety Valve and Drain Cock.
- The warranty on the installation is the responsibility of the installer.

Electrolux SA (Pty) Ltd



www.electrolux.co.za

inland division

3 Aberdeen Road,
Industrial Sites,
Benoni
Tel: (011) 897 4600

eastern cape division

39-41 Leadwood Crescent,
Fairview,
Port Elizabeth
Tel: (041) 399 4000
Fax: (041) 367 1005

western cape division

15 Purdey Road,
Sheffield Business Park, Phillippi,
Cape Town
Tel: (021) 690 2700
Fax: (021) 690 2800

kwazulu-natal division

814 Peter Close,
Springfield Park,
Durban
Tel: (031) 574 8700
Fax: (031) 574 8750