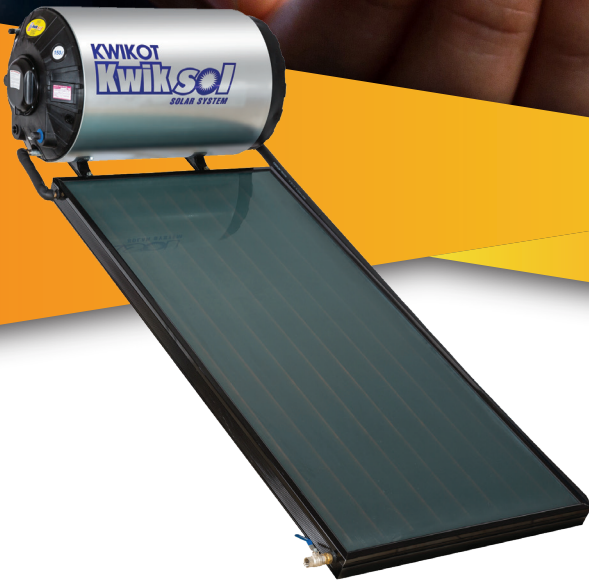



RENEWABLE ENERGY  
**DOESN'T COST THE EARTH**



**Kwiksol**  
**INDIRECT**

SOLAR WATER HEATER SYSTEMS FOR **FROST**  
LOCATIONS

**400kPa**

ENERGY	
Storage water heater	
Manufacturer: Electrolux SA (Pty) Ltd	
Model: SOL-150-IND-B	
More efficient	
A	
B	
C	
D	
E	
F	
G	
Less efficient	
Energy efficiency class, class B, When tested with RT tagging	57
Rated capacity, litres	150
Further information is contained in the product brochure.	
Spec: 5000-101	

**5**  
YEAR  
WARRANTY

## FEATURES

- COMPLIES WITH SANS 1307
- 400KPA APPROVED
- B-RATED ENERGY EFFICIENT
- ELECTRICAL BACKUP
- IPX4 RATED
- TRANSFERS HEAT VIA PROPYLENE GLYCOL
- COMPLETE SOLAR SYSTEM
- INTERGRATED ISOLATOR SWITCH



## WHY INDIRECT SOLAR?

- FOR FROST LOCATIONS BELOW 5 DEGREES.
- AREAS WITH POOR WATER QUALITY.
- MAJOR SAVING ON WATER HEATING COSTS.
- NATURAL SOLAR ENERGY FROM THE SUN.
- ENVIRONMENTALLY FRIENDLY.



## PRODUCT INSTALLATION

- TO BE INSTALLED IN COMPLIANCE WITH SANS 10106. WHEN INSTALLED INSIDE THE ROOF, IN COMPLIANCE WITH SANS 10106 AND SANS 10254.
- THE 15MM EXPANSION RELIEF VALVE 100KPA SUPPLIED WITH SYSTEM, MUST BE FITTED TO THE OUTER JACKET ON THE SOLAR WATER HEATER.



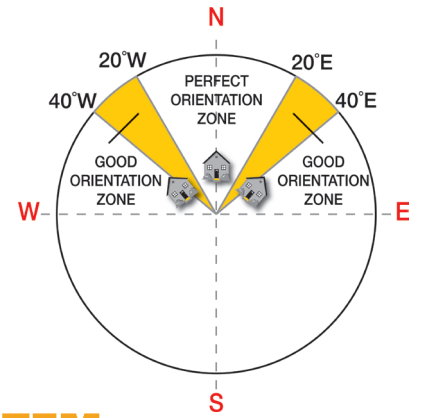
## PRODUCT WARRANTY

THE PERIOD OF WARRANTY IS FROM THE DATE OF INSTALLATION PROVIDING THAT DOCUMENTED PROOF OF INSTALLATION IS FURNISHED, OR ALTERNATIVELY FROM DATE OF MANUFACTURE AS DETERMINED FROM THE SERIAL PLATE CODE ON THE SOLAR WATER HEATER.

- ONE YEAR ON HEATING ELEMENT AND THERMOSTAT.
- TWO YEARS ON THE SAFETY VALVE, DRAIN COCK AND EXPANSION RELEASE VALVE.
- FIVE YEARS ON THE INNER CYLINDER, FLANGE ASSEMBLY PLATE AND GASKET, SUBJECT TO WATER CONDITIONS EQUIVALENT TO MAIN METROPOLITAN SUPPLY AUTHORITIES.
- FIVE YEARS ON THE SOLAR PANEL. THE WARRANTY ONLY APPLIES TO DEFECTS, WHICH HAVE ARISEN SOLELY DUE TO FAULTY MATERIALS AND WORKMANSHIP DURING THE MANUFACTURING PROCESS.
- THE WARRANTY ON THE INSTALLATION IS THE RESPONSIBILITY OF THE INSTALLER.

# ROOF LOCATION AND PITCH

- SOLAR PANELS TO FACE NORTH AND NOT TO DEVIATE MORE THAN 45 DEGREES.
- THE LOCATION SHOULD NOT BE SUBJECT TO EXCESSIVE SHADING.
- ROOF PITCH TO BE BETWEEN 8 DEGREES AND 30 DEGREES.
- CAREFUL INSPECTION MUST BE CARRIED OUT TO ENSURE THAT THE ROOF CAN SUPPORT THE WEIGHT OF THE ENTIRE SOLAR INSTALLATION SYSTEM.



# KWIKSOL COMPLETE INDIRECT SOLAR SYSTEM

DESCRIPTION	SOL-150-IC	SOL-200-IC	SOL-300-IC
<b>INDIRECT GEYSER</b>	<b>SOL-150-IND-B</b>	<b>SOL-200-IND-B</b>	<b>SOL-300-IND-B</b>
■ CAPACITY	150L	200L	300L
■ ELEMENT RATING	2KW	2KW	3KW
■ OPERATING PRESSURE	400KPA	400KPA	400KPA
■ MASS EMPTY	48KG	62KG	98KG
■ WATER CONNECTIONS (BSP MALE)	3/4	3/4	3/4
■ SOLAR CONNECTIONS (BSP FEMALE)	3/4	3/4	3/4
■ DIMENSION (L X H)	1070 X 596	1346 X 596	1935 X 596
<b>FLAT PLATE COLLECTOR</b>	<b>SOL-PANEL-2B</b>	<b>SOL-PANEL-2.5</b>	<b>SOL-PANEL-2B</b>
■ NUMBER OF COLLECTORS	1	1	2
■ COLLECTOR DIMENTIONS (L X B X H)	2M X 1 M X 80MM	2M X 1.25 M X 80MM	2M X 1 M X 80MM
■ MASS FULL	32	46	64
<b>S BRACKETS (2 PER BOX)</b>	<b>SOL-BRACKET-FP</b>	<b>SOL-BRACKET-FP</b>	<b>2X SOL-BRACKET-FP</b>
<b>GLYCOL SOL-PG-1</b>	<b>2L</b>	<b>3L</b>	<b>4L</b>
<b>UV SOLAR LAGGING</b>	<b>3 X 1.8M (25MM)</b>	<b>3 X 1.8M (25MM)</b>	<b>4 X 1.8M (25MM)</b>
<b>BRACKET</b>	<b>SOL-BRCT-UN</b>	<b>SOL-BRCT-UN</b>	<b>SOL-BRCT-300</b>
<b>EXPANSION RELIEF VALVE (15MM)</b>	<b>100 KPA</b>	<b>100 KPA</b>	<b>100 KPA</b>
<b>22MM VACUUM BREAKERS</b>	<b>2 X KHN4-200CX</b>	<b>2 X KHN4-200CX</b>	<b>2 X KHN4-200CX</b>
<b>400KPA PCV MULTIVALVE</b>	<b>KHN3-214</b>	<b>KHN3-214</b>	<b>KHN3-214</b>
<b>THERMOSTATIC MIXING VALVE</b>	<b>KH6-320</b>	<b>KH6-320</b>	<b>KH6-320</b>
<b>7 DAY DIGITAL GEYSER TIMER 20A</b>	<b>SOL-TIMER-1</b>	<b>SOL-TIMER-1</b>	<b>SOL-TIMER-1</b>

## MAINTENANCE RECOMMENDATIONS

- SERVICE THE SYSTEM ONCE A YEAR
- REPLACE GLYCOL EVERY 2 YEARS
- THE GEYSER PERFORMANCE IS DEPENDANT ON THE HEAT TRANSFER FLUID & THEREFORE SHOULD BE TOPPED UP IF & WHEN NECESSARY
- ADDITIONAL MAINTENANCE MAY BE REQUIRED DUE TO AREA AND USAGE

## ANODE SERVICING

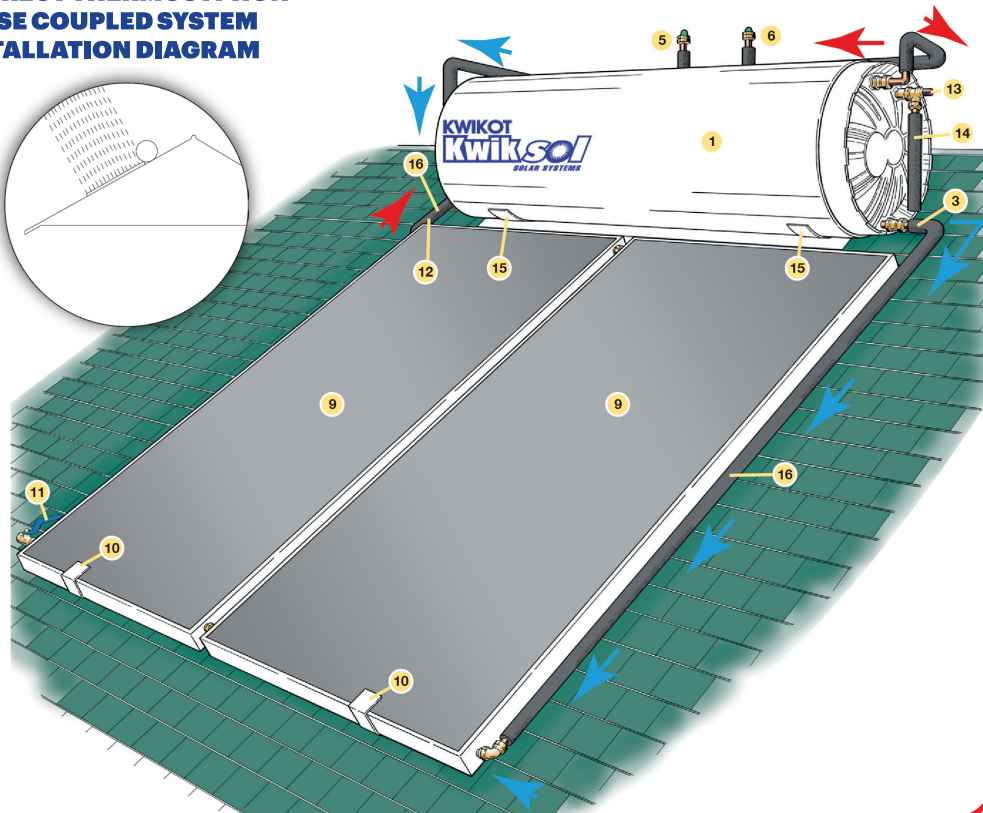
**TOTAL DISSOLVED SOLIDS**  
(PARTS PER MILLION)

**RECOMMENDED**  
**ANODE REPLACEMENT**

100 - 600  
601 - 1000  
OVER 1000

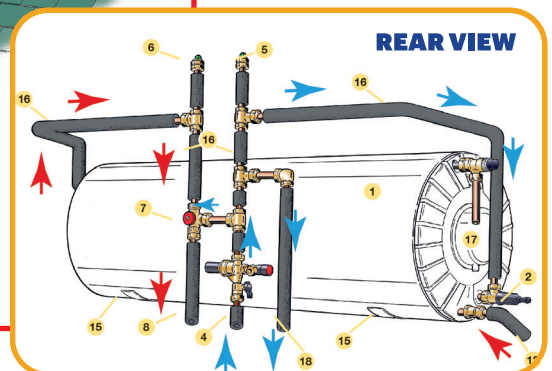
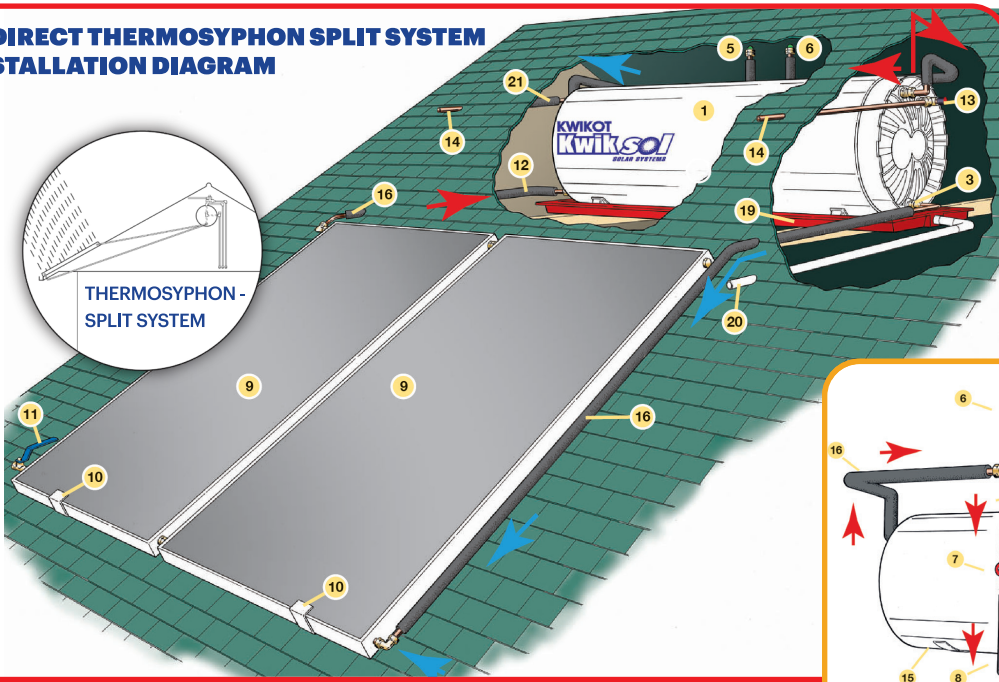
3 YEARS  
2 YEARS  
1 YEAR

## INDIRECT THERMOSYPHON CLOSE COUPLED SYSTEM INSTALLATION DIAGRAM



1	SOLAR WATER HEATER INDIRECT 400KPA
2	DRAIN COCK
3	COLD WATER FEED TO SOLAR COLLECTOR PANELS
4	PRESSURE CONTROL VALVE, 400KPA
5	VACUUM BREAKER COLD SIDE
6	VACUUM BREAKER HOT SIDE
7	THERMOSTATIC MIXING VALVE
8	HOT WATER FEED TO TAPS (BALANCED PRESSURE)
9	SOLAR COLLECTOR PANELS
10	ROOF MOUNTING BRACKETS FOR SOLAR COLLECTOR PANEL
11	LEVER BALL VALVE
12	HOT WATER FEED TO SOLAR WATER HEATER
13	SAFETY VALVE, 400KPA
14	EXPANSION OVERFLOW PIPE
15	PITCH ROOF SUPPORT FOR SOLAR WATER HEATER
16	THERMAL PIPE LAGGING (R1 RATING)
17	ELECTRICAL COVER PLATE WITH ISOLATOR SWITCH (IPX4 RATED)
18	COLD WATER FEED TO TAPS (BALANCED PRESSURE)
19	DRIP TRAY
20	BOMM OVERFLOW FROM DRIP TRAY
21	EXPANSION VALVE 100KPA

## INDIRECT THERMOSYPHON SPLIT SYSTEM INSTALLATION DIAGRAM



**Electrolux SA (Pty) Ltd**

**Electrolux**

**www.electrolux.co.za**

### Inland division

3 Aberdeen Road,  
Industrial Sites  
Benoni  
Tel: (011) 897 4600

### Eastern Cape division

39 -41 Leadwood Crescent,  
Fairview,  
Port Elizabeth  
Tel: (041) 399 4000  
Fax: (041) 367 1005

### Western Cape division

15 Purdey Road,  
Sheffield Business Park, Phillippi,  
Cape Town  
Tel: (021) 690 2700  
Fax: (021) 690 2800

### Kwazulu-Natal division

814 Peter Close,  
Springfield Park,  
Durban  
Tel: (031) 574 8700  
Fax: (031) 574 8750