

INDUSTRIAL



SUPPLY OF
BULK
WATER HEATING &
WATER COOLING SOLUTIONS

INDUSTRIAL BULK HOT AND COLD WATER TANKS



INDUSTRIAL

Bulk Hot Water Systems

product features

- Industrial Tanks designed to supply large quantities of hot water for use in hotels, hospitals, hostels ablutions etc, and chiller tanks for airconditioning units.
- Vessels are manufactured from either mild steel or stainless steel on request.
- Mild steel vessels are coated with Sigmairite Sealer or Glass Flake Epoxy on request.
- Vessels are available in vertical or horizontal configuration for floor installation.
- Incolloy elements fitted as standard. Element loading is designed for 6 hour recovery from cold to 60°C.
- Insulation consists of 50mm IW24 fibreglass wool clad with 0,6mm galvanised sheet metal or Stainless Steel cladding on request.
- All vessels are fitted with over-pressure and over-temperature safety valves.
- Vessels are fitted with control and over-temperature thermostats.
- Working pressure up to **400kPa** (600kPa available on request).
- Pre-wired, vessel mounted control panels for loadings up to 48kW.
- Additional electrical accessories including ammeter; volt meter; time and by-pass switches; stepped control and low water cut outs are available on request
- Flanged connections available on request.

product specification data

- All tanks manufactured to SANS 347-SEP.
- Certification of all vessels is available on request.
- All tanks include connections for a Heat Pump and drain outlet.



Code	Capacity (lit)	Vertical Size (mm)		Standard Connections (mm)	Horizontal Size (mm)		Standard Electrical Loading (kW)	Mass (kg)	Heat Pump Connections (mm)
		H	D		H	L			
KS 100	500	1864	710	5 x 40	840	2249	6	125	2 x 32
KS 125	600	1660	850	5 x 40	980	1854	6	150	2 x 32
KS 150	700	1918	850	5 x 40	980	2129	9	170	2 x 32
KS 180	800	1427	1020	5 x 50	1150	1645	12	210	2 x 32
KS 200	1000	1652	1020	5 x 50	1150	1869	12	260	2 x 32
KS 250	1200	1927	1020	5 x 50	1150	2145	12	280	2 x 32
KS 300	1400	2223	1020	5 x 50	1150	2444	18	320	2 x 32
KS 350	1600	2120	1170	5 x 50	1300	2358	18	360	2 x 32
KS 400	1800	2345	1170	5 x 50	1300	2583	24	400	2 x 32
KS 450	2000	2545	1170	5 x 50	1300	2783	24	450	2 x 32
KS 500	2300	2403	1320	5 x 50	1450	2640	24	540	2 x 32
KS 550	2500	2605	1320	5 x 50	1450	2840	27	600	2 x 32
KS 600	2700	2706	1320	5 x 50	1450	2940	27	650	2 x 32
KS 650	3000	2462	1470	5 x 50	1600	2664	36	700	2 x 32
KS 700	3200	2582	1470	5 x 50	1600	2787	36	760	2 x 32
KS 800	3600	2862	1470	2 x 50 & 3 x 80	1600	3067	48	820	2 x 32
KS 900	4000	2941	1550	2 x 50 & 3 x 80	1680	3176	48	880	2 x 32
KS 1000	4600	3141	1550	2 x 50 & 3 x 80	1680	3478	60	950	2 x 32
KS 1100	5000	3541	1550	2 x 50 & 3 x 80	1680	3878	60	1200	2 x 80
KS1300	6000	3224	1780	2 x 50 & 3 x 80	1960	3435	72	1500	2 x 80
KS 1500	6800	3624	1780	2 x 50 & 3 x 80	1960	3881	72	1600	2 x 80
KS 2000	10 000	3933	2080	2 x 50 & 3 x 80	2260	4166	84	1800	2 x 80



INDUSTRIAL

Inline Heaters

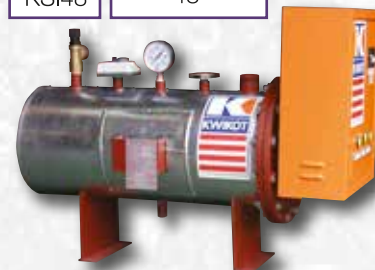
product features

- These units are manufactured from mild steel and coated with Glass Flake Epoxy.
- Units are insulated with 50mm fibre wool and 0.6mm galvanised cladding or Stainless Steel cladding on request.
- Element loading to specification but can be manufactured up to 252kW.
- Product is supplied with electrical control, thermostat and safety valve
- Product can be manufactured to customer specification and include high working pressures, specialised material for non standard dimensions and alternative electrical controls.

product specification data

- Inline heaters can be used in conjunction with a large storage tank.
- Inline heaters can be used with when no storage tank is available.
- This product can be used to heat liquids other than water and is ideally suited for the conversion from oil and coal fired boilers where existing tanks are available.

Code	Standard Electrical Loading (kW)
KSI6	6
KSI9	9
KSI12	12
KSI18	18
KSI24	24
KSI27	27
KSI36	36
KSI48	48





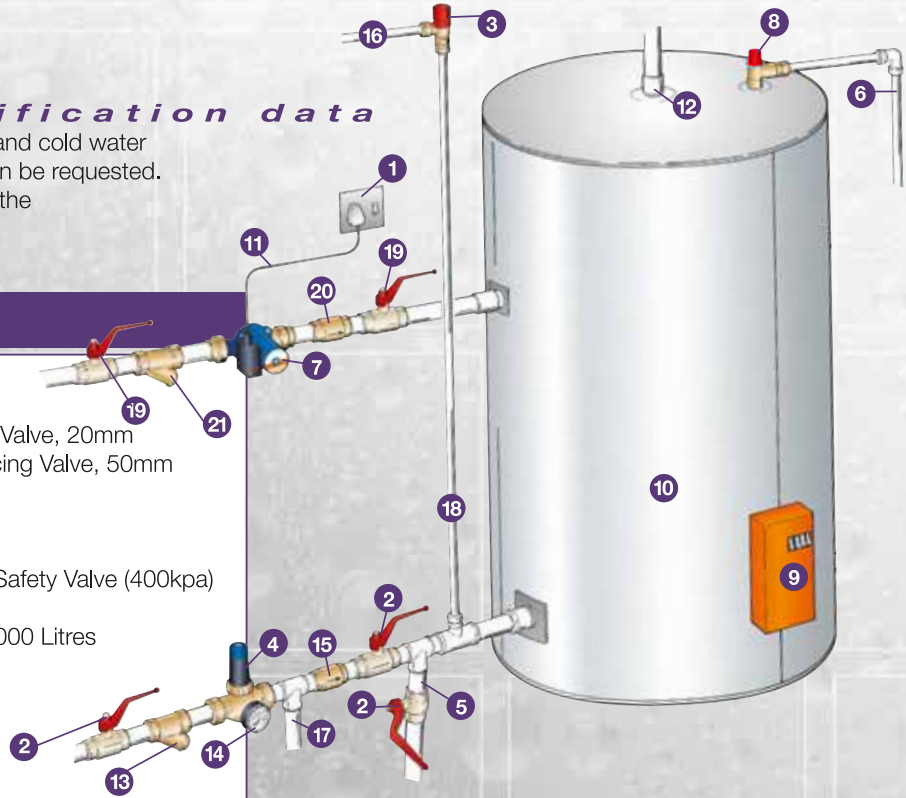
INDUSTRIAL

Bulk Hot Water Systems

installation specification data

A comprehensive service for the design of hot and cold water reticulation system for industrial applications can be requested.
 NB: All accessory sizes will vary accordingly to the installation.

	Product Code	Product Description
1		15 Amp Wall Socket
2	INDB-50	Isolating Lever-ball Valve, 50mm
3	KH2-204	400kpa Kwikot Expansion Relief Valve, 20mm
4	KH8-500	Kwikot Industrial Pressure Reducing Valve, 50mm
5		Drain Connection
6		Safety Overflow Pipe (Metallic)
7	IND-CPN-25-6	Inline Circulating Pump, 25mm
8	KH1-404CX	Kwikot Temperature & Pressure Safety Valve (400kpa)
9		Electrical Control Panel
10	KS200	Kwikot Bulk Hot Water Vessel 1 000 Litres (From 500 To 30 000 Litres)
11		Supply Cable
12		Hot Water Outlet
13	INDS-50	Y Strainer, 50mm
14	KH7-000	Pressure Gauge
15	INDN-50	Non-Return Valve, 50mm
16		Expansion Overflow Pipe (Metallic)
17		Balanced Cold Water
18		Expansion Valve Stand Pipe
19	INDB-25	Isolation Ball Valve, 25mm
20	INDN-25	Non-Return Valve, 25mm
21	INDS-25	Y-Strainer, 25mm



Industrial Adjustable Pressure Reducing Valves

Designed for all Industrial bulk water systems.



Code	Industrial Pressure Reducing Valves
KHN8-150	15mm adjustable pressure reducing valve 150kPa to 600kPa
KHN8-200	20mm adjustable pressure reducing valve 150kPa to 600kPa
KHN8-250	25mm adjustable pressure reducing valve 150kPa to 600kPa
KHN8-320	32mm adjustable pressure reducing valve 150kPa to 600kPa
KHN8-400	40mm adjustable pressure reducing valve 150kPa to 600kPa
KHN8-500	50mm adjustable pressure reducing valve 150kPa to 600kPa
KH8-650	65mm adjustable pressure reducing valve 150kPa to 600kPa
KH8-800	80mm adjustable pressure reducing valve 150kPa to 600kPa
KH8-000	100mm adjustable pressure reducing valve 150kPa to 600kPa

Industrial Relief Valves

Designed for use in Industrial bulk water systems. The valve comprises of a cartiridge with a built-in flushing mechanism and dry spring operation. The body is manufactured from DRZ brass.



Code	Kwikot Industrial Expansion Relief Valve
KH2-200	20mm expansion relief valve, 20mm FI inlet, 25mm FI outlet - 300kPa
KH2-204	20mm expansion relief valve, 20mm FI inlet, 25mm FI outlet - 400kPa
KH2-206	20mm expansion relief valve, 20mm FI inlet, 25mm FI outlet - 600kPa
KH2-250	25mm expansion relief valve, 25mm FI inlet, 32mm FI outlet - 300kPa
KH2-254	25mm expansion relief valve, 25mm FI inlet, 32mm FI outlet - 400kPa
KH2-256	25mm expansion relief valve, 25mm FI inlet, 32mm FI outlet - 600kPa

Industrial Temperature and Pressure Relief Valves

Ranging from 300kPa to 600kPa.



Code	Kwikot Temperature & Pressure Relief Valves
KH1-403 IND	25mm FI temperature & pressure relief valve - 300kPa
KH1-404 IND	25mm FI temperature & pressure relief valve - 400kPa
KH1-406 IND	25mm FI temperature & pressure relief valve - 600kPa



INDUSTRIAL

estimated hot water consumption

ABLUTION BLOCKS	Per Person/Per day	HOTELS	Per Person/Per day
Bath	60 litres	1 & 2 Star	100 litres
Shower	35 litres	3 & 4 Star	125 litres
Hand Basin	2 litres	5 Star	150 litres
		Residential	100 litres
FLATS	Storage Per flat/Per day	HOSPITALS	Per Person/Per day
Bachelor/1 Bedroom	100 litres	General	120 litres
2 Bedroom	150 litres	Infections	180 litres
3 to 4 Bedroom	200 litres	Maternity	180 litres
		Mental	90 litres
		Staff Residential	90 litres
CARAVAN PARK	Per caravan/Per day	SPORTING FACILITIES	Per Person/Per day
	150 to 250 litres	Baths	60 litres
		Showers	30 litres
OLD AGE HOME	Per Person/Per day		
Infirm	60 litres		
Normal	110 litres		

product warranty

Product warranties are determined by the correct specification and servicing requirements.

- One year on the electrical control panel, thermostat and safety valve.
- All installation guarantees are the responsibility of the installer.
- The warranty is applicable from date of manufacture and subject to water conditions equivalent to main Metropolitan supply authorities.
- Two years on Sigmarite coated tanks
- Five years on Glass Flake Epoxy coated tanks

installation accessories

A wide range of accessories are available to complete the hot water installation



Pressure Gauges



Thermometer



Circulating Pump



Standard Immersion Element



Dual Thermostat



Lever Ball Valve



Spring Loaded Non Return Valve



Y-strainer

kwikot branch contact details:

kwikot (pty) ltd inland division

PO Box 1016, Benoni, 1500
Tel: (011) 897 4600

Industrial Sales:
email: sales.industrial@kwikot.com
AFTER SALES SERVICE TEL:
0861 KWIKOT (594568)

Export Sales:
email: sales.export@kwikot.com

Marketing:
email: marketing.info@kwikot.com

Technical:
email: industrial.technical@kwikot.com

kwikot (pty) ltd eastern cape division

PO Box 29142, Sunridge Park, Port Elizabeth, 6008
Tel: (041) 399 4000
Fax: (041) 367 1005

Domestic Sales
Email: sales.easterncape@kwikot.com

kwikot (pty) ltd western cape division

PO Box 32072, Ottery, Cape Town, 7808
Tel: (021) 690 2700
Fax: (021) 690 2800

Domestic Sales
Email: sales.westerncape@kwikot.com

kwikot (pty) ltd kwazulu-natal division

P O Box 47366, Greyville, Durban, 4023
Tel: (031) 574 8700
Fax: (031) 574 8750

Domestic Sales
email: sales.kwazulunatal@kwikot.com