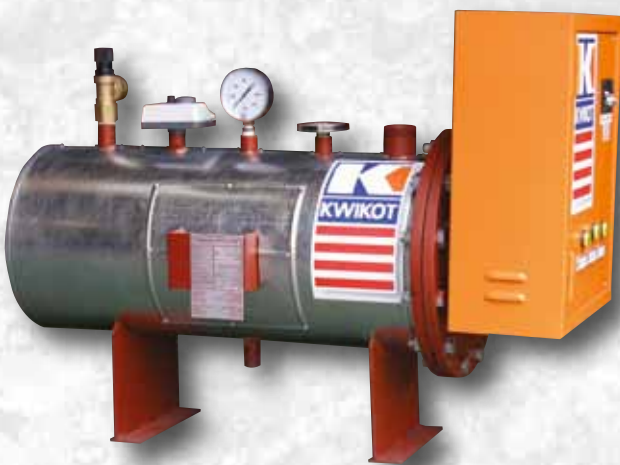


# INDUSTRIAL



SUPPLY OF  
**BULK**  
WATER HEATING &  
WATER COOLING SOLUTIONS

INDUSTRIAL BULK HOT AND COLD WATER TANKS



# INDUSTRIAL

## Bulk Hot Water Systems

### product features

- Industrial Tanks designed to supply large quantities of hot water for use in hotels, hospitals, hostels ablutions etc, and chiller tanks for airconditioning units.
- Vessels are manufactured from either mild steel or stainless steel on request.
- Mild steel vessels are coated with Sigmarite Sealer or Glass Flake Epoxy on request.
- Vessels are available in vertical or horizontal configuration for floor installation.
- Incalloy elements fitted as standard. Element loading is designed for 6 hour recovery from cold to 60°C.
- Insulation consists of 50mm IW24 fibreglass wool clad with 0,6mm galvanised sheet metal. (Aluminium or Stainless Steel cladding on request).
- All vessels are fitted with over-pressure and over-temperature safety valves.
- Vessels are fitted with control and over-temperature thermostats.
- Working pressure up to **400kPa**.
- Pre-wired, vessel mounted control panels for loadings up to 48kW; above 48kW a separate wall mounting panel is supplied.
- Additional electrical accessories including ammeter; volt meter; time and by-pass switches; stepped control and low water cut outs are available on request.



### product specification data

- All products manufactured in accordance with ASME VIII uncertified
- Certification of all vessels is available on request.

CODE	Capacity	Vertical Size (Mm)		Standard Connection (Mm)	Horizontal Size (Mm)		Standard Electrical Loading	Mass (Kg)
		H	D		H	L		
KS100	500	1820	710	5 x 40	720	1890	6	125
KS125	600	1540	860	5 x 40	900	1672	6	150
KS150	700	1820	860	5 x 40	900	1890	9	170
KS200	1 000	1626	1015	5 x 50	1165	1685	12	260
KS250	1 200	1955	1015	5 x 50	1165	2005	12	280
KS300	1 400	2235	1015	5 x 50	1165	2334	18	320
KS350	1 600	2030	1170	5 x 50	1270	2130	18	360
KS400	1 800	2221	1170	5 x 50	1270	2381	24	400
KS450	2 000	2400	1170	5 x 50	1270	2400	24	450
KS500	2 300	2310	1320	5 x 50	1420	2370	24	490
KS600	2 700	2580	1320	5 x 50	1420	2650	27	650
KS700	3 200	2535	1470	2 x 50 & 3 x 80	1600	2681	36	760
KS800	3 600	2820	1470	2 x 50 & 3 x 80	1600	2961	48	820
KS900	4 000	2797	1550	2 x 50 & 3 x 80	1680	2877	48	880
KS1000	4 600	3090	1550	2 x 50 & 3 x 80	1680	3110	60	950
KS1500	6 800	3492	1776	2 x 50 & 3 x 80	1956	3592	72	1600
KS2000	10 000	3433	2080	2 x 50 & 3 x 80	2260	3533	84	1800



# INDUSTRIAL

## Inline Heaters

### product features

- The units are manufactured from mild steel and coated with Sigmarite Sealer (Glass Flake Epoxy on request)
- Units are insulated with 50mm fibre wool and 0,6mm galvanised cladding (Aluminium or Stainless Steel cladding on request).
- Element loading to specification but can be manufactured up to 480 kW.
- Product is supplied with electrical control, thermostat and safety valve.
- Product can be manufactured to customer specification and include high working pressures, specialised material for non standard dimensions and alternative electrical controls.



### product specification data

- Inline heaters can be used in conjunction with a large storage tank
- Inline heaters can be used when no storage tank is available.
- This product can be used to heat liquids other than water.
- The product is ideally suited for the conversion from oil and coal fired boilers where existing tanks are available

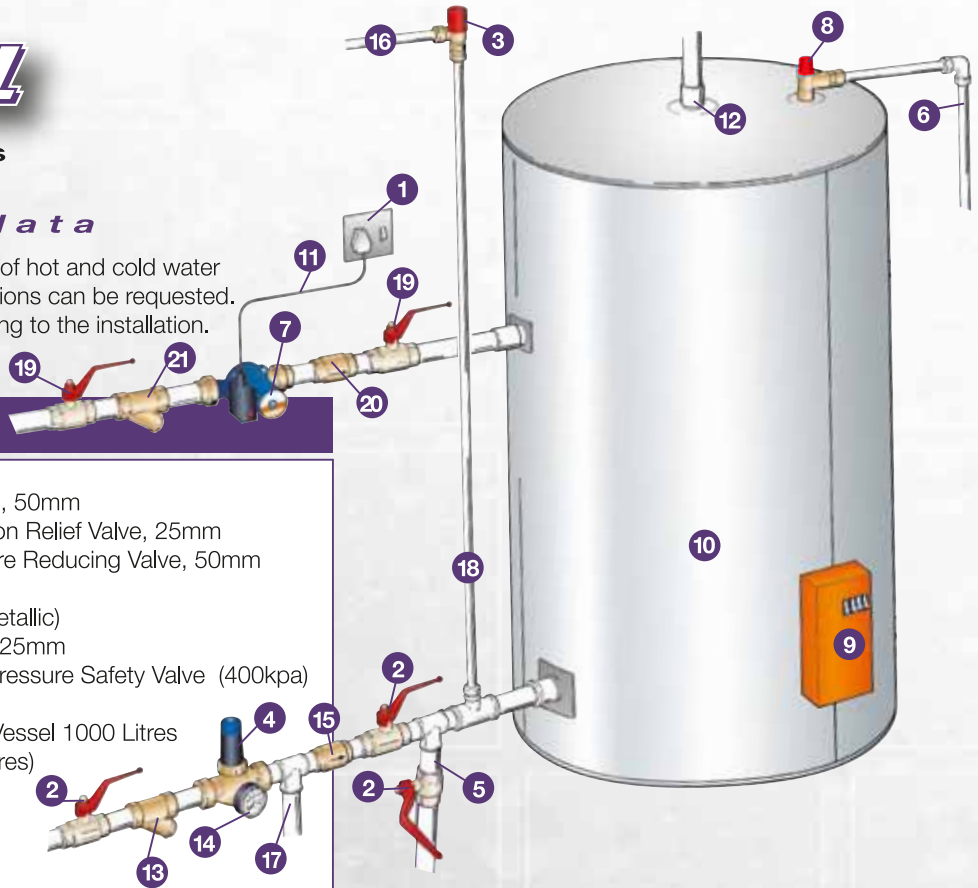


# INDUSTRIAL

## Bulk Hot Water Systems

### installation specification data

A comprehensive service for the design of hot and cold water reticulation system for industrial applications can be requested.  
NB: All accessory sizes will vary according to the installation.



Product Code	Product Description
1	15 Amp Wall Socket
2	INDB-50 Isolating Lever-ball Valve, 50mm
3	KH2.254 400kpa Kwikot Expansion Relief Valve, 25mm
4	KH8.500 Kwikot Industrial Pressure Reducing Valve, 50mm
5	Drain Connection
6	Safety Overflow Pipe (Metallic)
7	IND-CPN-25-6 Inline Circulating Pump, 25mm
8	KH1.404CXM Kwikot Temperature & Pressure Safety Valve (400kpa)
9	Electrical Control Panel
10	KS200 Kwikot Bulk Hot Water Vessel 1000 Litres (From 500 To 30 000 Litres)
11	Supply Cable
12	Hot Water Outlet
13	INDS-50 Y Strainer, 50mm
14	KH7.000 Pressure Gauge
15	INDN-50 Non-Return Valve, 50mm
16	Expansion Overflow Pipe (Metallic)
17	Balanced Cold Water
18	Expansion Valve Stand Pipe
19	INDB-25 Isolation Ball Valve, 25mm
20	INDN-25 Non-Return Valve, 25mm
21	INDS-25 Y-Strainer, 25mm

## Industrial Adjustable Pressure Reducing Valves

Designed for all Industrial bulk water systems.

Code	Industrial Pressure Reducing Valves
KH8.150	15mm adjustable pressure reducing valve 150kPa to 600kPa
KH8.200	20mm adjustable pressure reducing valve 150kPa to 600kPa
KH8.250	25mm adjustable pressure reducing valve 150kPa to 600kPa
KH8.320	32mm adjustable pressure reducing valve 150kPa to 600kPa
KH8.400	40mm adjustable pressure reducing valve 150kPa to 600kPa
KH8.500	50mm adjustable pressure reducing valve 150kPa to 600kPa
KH8.650	65mm adjustable pressure reducing valve 150kPa to 600kPa
KH8.800	80mm adjustable pressure reducing valve 150kPa to 600kPa
KH8.000	100mm adjustable pressure reducing valve 150kPa to 600kPa



## Industrial Relief Valves

Designed for use in industrial bulk water systems. The valve comprises of a cartridge with a built-in flushing mechanism and dry spring operation. The body is manufactured from DZR brass.

Code	Kwikot Industrial Expansion Relief Valve
KH2.200	20mm expansion relief valve, 20mm FI inlet, 25mm FI outlet - 300kPa
KH2.204	20mm expansion relief valve, 20mm FI inlet, 25mm FI outlet - 400kPa
KH2.250	25mm expansion relief valve, 20mm FI inlet, 32mm FI outlet - 300kPa
KH2.254	25mm expansion relief valve, 20mm FI inlet, 32mm FI outlet - 400kPa



## Industrial Temperature and Pressure Relief Valves

Ranging from 300kPa to 600kPa

Code	Kwikot Temperature & Pressure Relief Valves
KH1.403 IND	25mm FI temperature & pressure relief valve - 300kPa
KH1.404 CXM	25mm MI temperture & pressure relief valve - 400kPa
KH1.404 IND	25mm FI temperture & pressure relief valve - 400kPa
KH1.406 IND	25mm FI temperture & pressure relief valve - 600kPa



## Industrial Thermostatic Mixing Valves

Designed to control set hot water temperatures for ablution facilities.

Code	Kwikot Thermostatic Mixing Valves
MIX-015	15mm thermostatic mixing valve
MIX-020	20mm thermostatic mixing valve





# INDUSTRIAL

## estimated hot water consumption

ABLUTION BLOCKS	Per Person/Per day	HOTELS	Per Person/Per day
Bath	60 litres	1 & 2 Star	100 litres
Shower	35 litres	3 & 4 Star	125 litres
Hand Basin	2 litres	5 Star	150 litres
		Residential	100 litres
FLATS	Storage Per flat/Per day	HOSPITALS	Per Person/Per day
Bachelor/1 Bedroom	100 litres	General	120 litres
2 Bedroom	150 litres	Infections	180 litres
3 to 4 Bedroom	200 litres	Maternity	180 litres
		Mental	90 litres
CARAVAN PARK	Per caravan/Per day	Staff Residential	90 litres
	150 to 250 litres	SPORTING FACILITIES	Per Person/Per day
OLD AGE HOME	Per Person/Per day	Baths	60 litres
Infirm	60 litres	Showers	30 litres
Normal	110 litres		

## product warranty

Product warranties are determined by the correct specification and servicing requirements.

- One year on the electrical control panel, thermostat and safety valve.
- All installation guarantees are the responsibility of the installer.
- The warranty is applicable from date of manufacture and subject to water conditions equivalent to main Metropolitan supply authorities.
- Two years on Sigmarite coated tanks
- Five years on Glass Flake Epoxy coated tanks

## installation accessories

A wide range of accessories are available to complete the hot water installation



Pressure Gauges

Thermometer

Circulating Pump

Dual Thermostat

Lever Ball Valve

Spring Loaded Non Return Valve

Y-strainer

Standard Immersion Element

## kwikot branch and website addresses:

### kwikot (pty) ltd inland division

PO Box 1016 Benoni 1500  
Tel: (011) 897 4600  
Fax: (011) 914 4750

**Industrial Sales**  
email: sales.industrial@kwikot.com  
**AFTER SALES SERVICE TEL:**  
0861 KWIKOT (594568)

**Export Sales:**  
email: sales.export@kwikot.com

**Marketing:**  
email: marketing.info@kwikot.com

**Technical:**  
email: industrial.technical@kwikot.com

**Kwikot, first in mind, first in absolute peace of mind**

### kwikot (pty) ltd eastern cape division

PO Box 29142, Sunridge Park, Port Elizabeth, 6056  
Tel: (041) 399 4000  
Fax: (041) 367 1005

**Domestic Sales**  
Email: sales.easterncape@kwikot.com

### kwikot (pty) ltd western cape division

PO Box 443, Eppindust, 7475  
Tel: (021) 690 2700  
Fax: (021) 690 2800

**Domestic Sales**  
Email: sales.westerncape@kwikot.com

### kwikot (pty) ltd kwazulu-natal division

P O Box 47366, Greyville, 4023  
Tel: (031) 574 8700  
Fax: (031) 574 8750

**Domestic Sales**  
email: sales.kwazulunatal@kwikot.com

[www.kwikot.com](http://www.kwikot.com)