



CONTACT DETAILS

FOR AFTER SALES SERVICE REPAIRS & QUERIES

TOURBILLON AGENCIES

Physical Address: 264 Peach Drive
Northcliff Ext. 4
Johannesburg

Postal Address: Suite 65
Private Bag X11
Birnham Park
2015

Contact Numbers: Tel 0860111490
Fax 0866638772
Email info@tourbillon.co.za

KWIKOT SALES OFFICES

Kwikot Inland Division

PO Box 1016
Benoni, 1500
Tel (+2711) 9142300
Fax (+2711) 9144750
Email sales.inland@kwikot.com

Kwikot KwaZulu-Natal Division

PO Box 47366
Greyville, Durban, 4023
Tel (+2731) 5792178
Fax (+2731) 5792199
Email sales.kwazulunatal@kwikot.com

Kwikot Western Cape Division

PO Box 443
Eppingdust, Cape Town, 7475
Tel (+2721) 5343691
Fax (+2721) 5341606
Email sales.westerncape@kwikot.com

Kwikot Eastern Cape Division

PO Box 3082
North End, Port Elizabeth, 6056
Tel (+2741) 3730575
Fax (+2741) 3730577
Email sales.easterncape@kwikot.com

www.kwikot.com



INSTALLATION & WARRANTY MANUAL



MODEL
2600 / 3300

TOURBILLON AGENCIES
SUITE 65
PRIVATE BAG XII
BIRNAM PARK
2015



INSTALLATION OF WASTE DISPOSER & PLUMBING CONNECTIONS

Before commencing, write down the serial number that is located on the label at the bottom of the waste disposer onto the warranty reply section in this manual.

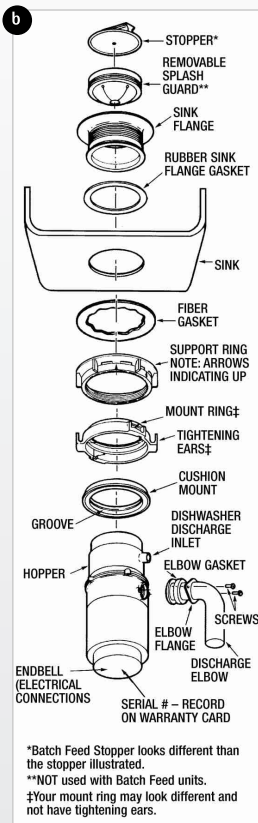
a. Removal of the Existing Waste Fitting **Outlet from the Sink**

- From below the sink or prep-bowl remove the clamp which holds the plumbing pipe work to the waste fitting outlet and then unscrew the large nut that secures the waste fitting to the sink bowl.
- Remove the entire waste outlet fitting from inside the sink bowl and clean the area around the sink opening where the fitting was a 90mm waste outlet, ensuring that there is no residue of old putty or sealant.
- If the sink outlet is 40mm and the outlet is not located too close to the inner curvature of the bowl, the outlet can then be cut to a 90mm circular outlet and any sharp edges must be filed after cutting.

b. Fitting of Sink Mount Assembly

Pay close attention to the order of the mount assembly parts, as they have been correctly assembled beforehand.

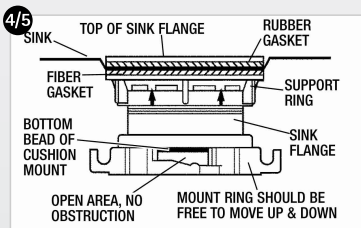
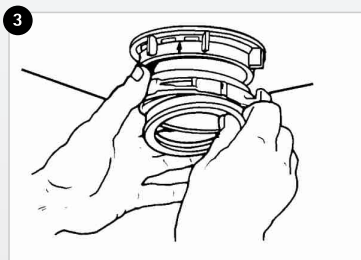
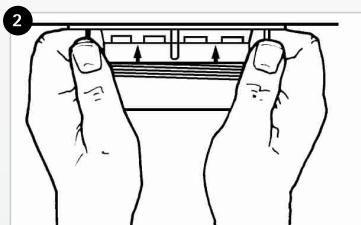
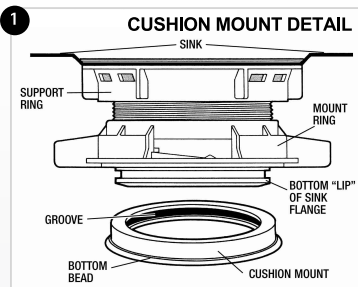
Take special note to the cushion mount



detail for the proper orientation of the cushion mount.

It is recommended to practise the sink mount assembly before getting under the sink to do the actual fitting, in order to see how the parts fit together.

1. Disassemble the sink mount assembly from the waste disposer by turning the mount ring to the left (clockwise) and remove.
2. Raise the mount ring towards the top of the sink flange and remove the mount ring.
3. Unscrew the support ring from the sink flange and remove the fibre gasket. All that is left is the sink flange and rubber gasket. The rubber gasket is used to seal the sink flange to the sink bowl. Plumbers putty can be applied to the sink bowl opening to ensure a better seal of the rubber gasket.
4. Insert the sink flange through the rubber gasket into the sink bowl opening. Do not rotate the sink flange once it is seated.
5. From below the sink, slip



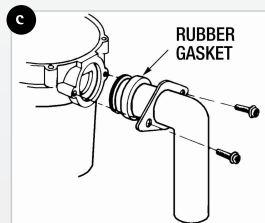
exposed sink flange. With the arrows pointing up on the screw support ring, screw the support ring onto the sink flange and hand tighten until the sink flange does not move.

Place the mount ring over the sink flange and hold in place while installing the rubber cushion mount with the large side facing down, so that the groove on the inside of the rubber cushion mount fits over the lip on the sink flange.

When the rubber cushion mount is fitted correctly, the lip of the sink flange fits into the groove on the side of the rubber cushion mount and the mount ring can be pulled downwards over the rubber cushion mount and will rotate freely. The bottom bead of the rubber cushion mount acts as a gasket between the bottom of the sink flange and the top of the waste disposer.

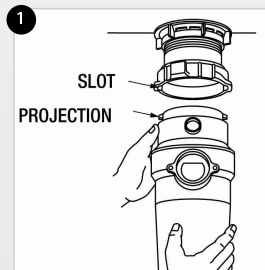
c. Attaching the Discharge Elbow

Connect the black discharge elbow pipe to the waste disposer using the supplied rubber gasket and screws with the pipe facing downwards.



d. Connecting the Waste Disposer to the Sink Mount Assembly

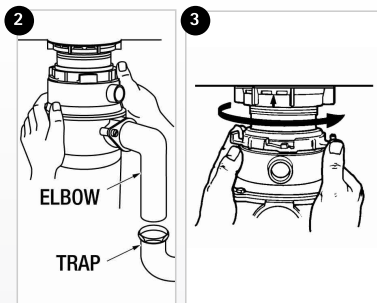
1. Line the waste disposer under the sink mounting assembly. Guide the hopper projections into the mount ring slots. Turn the mount ring about 6mm (1/4") to the right so that the waste disposer is temporarily supported.
2. Turn the mount ring and waste disposer until the waste disposer elbow lines up with the plumbing pipe work.
3. Turn the mount ring to the right



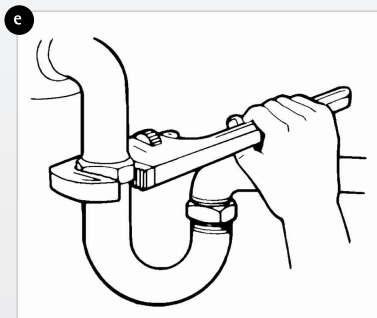
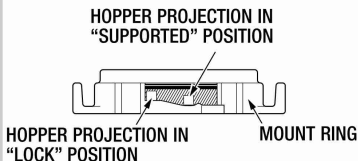
(counter-clockwise) until it locks up tight. Tap the mount ring ears with a hammer until the lock position is achieved. The hopper projections must be to the extreme left of the mounting slots. If the mount ring is hard to turn, add a small amount of petroleum jelly or liquid soap to the hopper projections.

e. Connecting the Plumbing Pipe Work to the Discharge Elbow Pipe

1. If 40mm PVC plumbing pipe is used, this can be fitted over the discharge elbow pipe and can be glued or sealed with a silicone sealant.
2. If clamps or an adapter connection are used, these must be securely tightened. (Do not overtighten as this may crack the outlet elbow pipe)
3. Run water through the system and check for leaks.



LOCKING DETAIL



ELECTRICAL ON/OFF SWITCH CONNECTIONS

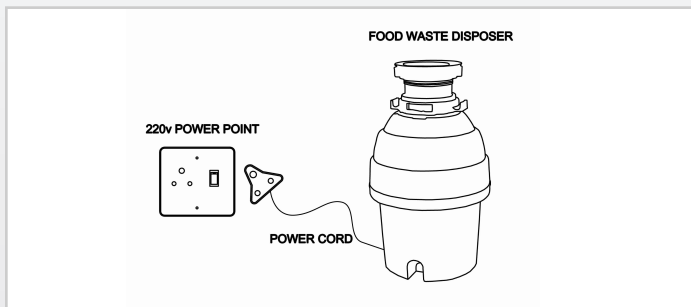
The waste disposer is supplied with an already connected 800mm length of electrical cable which is made up of a 2,5mm live (brown), neutral (blue) and earth (green/yellow) wires. A standard three-prong plug is not supplied as the

cable may have to be shortened or lengthened.

a. Using a Three-Prong Wall Plug as the ON/OFF Switch

The following electrical installation must be followed where the waste disposer is connected directly to a three-prong wall socket, which is used as the ON/OFF switch.

1. Dependant on the location of the nearest three-prong wall socket, the cable may have to be shortened or lengthened to reach the wall socket. Where the cable has to be lengthened, be sure that the two cables are properly connected using a terminal block and the block is properly sealed.
2. At the end of cable connect a standard three-prong plug, following the markings on the plug of which wires are connected to which prongs. The earth wire must be connected to the three-pronged plug, as the waste disposer must be grounded in the event of a malfunction or breakdown. The grounding provides a path of least resistance for electric current to reduce the risk of an electric shock.
3. Push the three-prong plug into the wall plug and switch ON. The waste disposer motor should start running. If the motor does not run, push the reset button on the waste disposer.



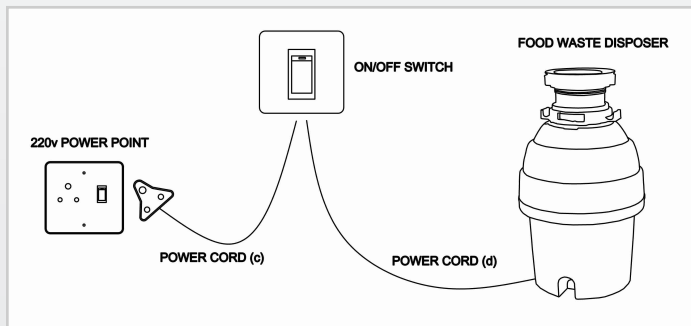
b. Using an Electrical ON/OFF Switch with a Three Prong Wall Socket

A minimum 20amp SABS Isolator Switch (ON/OFF Switch) must be used and the following installation procedure must be followed:

1. The ON/OFF switch must be mounted at a safe distance from any

water source and must not be exposed to water droplets or areas of moisture build up. A wallmounting or mounting directly under the counter top is recommended.

2. For a tidy electrical cable installation, run the cables in plastic conduit.
3. Once the ON/OFF switch has been mounted, connect the cable from the waste disposer to the ON/OFF switch in the following manner:
 - Neutral to Neutral
 - Earth to Earth
 - Live to Live and Neutral
4. Using three core 2.5mm electrical cable (neutral, earth and live) connect the cable to the ON/OFF switch as in the manner as described in point 3. At the end of this cable connect a standard three-prong plug following the markings on the plug of which wires are connected to which prongs. The earth wire must be connected to the three-pronged plug, as the waste disposer must be grounded in the event of a malfunction or breakdown. The grounding provides a path of least resistance for electric current to reduce the risk of an electric shock.
5. Plug the three-prong plug into the wall socket and switch ON. Switch ON the switch and the waste disposer motor should start running. If the motor does not run, push the reset button on the waste disposer.

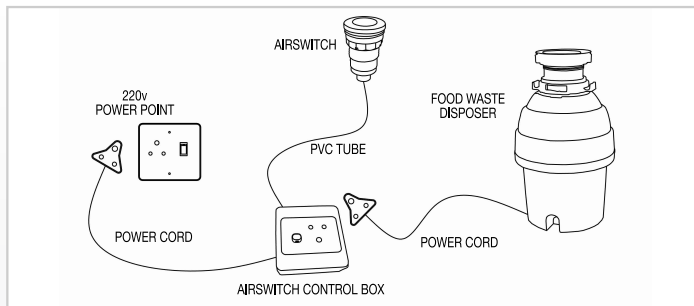


c. Using an ON/OFF Air-switch with a Three-Prong Wall Socket.

Where a switch is to be fitted to the counter top next to the sink or into

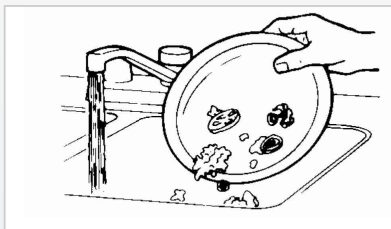
a sink top, an air-switch must be used and the following installation procedure must be followed:

1. Check the diameter of the button for the hole to be drilled. This is normally 32mm however may differ depending on the make of the air-switch.
2. Use a 32mm hole saw to drill the hole in the wooden counter top and a 32mm chassis punch to drill the hole into the sink top.
3. Remove the plastic nut from the button and place a small amount of silicon sealant under the lip of the button and insert the button into the cut hole.
4. Screw the plastic nut onto the button from underneath the counter top or sink and do not over tighten as this may crack the nut.
5. Connect the one end of the clear PVC tube to the spout at the bottom of the button.
6. Locate a safe and moisture free position under the counter for the control box, which is in close proximity to a three-prong wall socket and the electrical cable from the waste disposer. The electrical cables may have to be extended.
7. Connect standard three prong plugs to the electrical cable of the control box and the electrical cable from the waste disposer and the earth wire must be connected.
8. Plug in the three-prong plug from the waste disposer into the socket on the control box and plug the three-prong plug from the control box into the wall socket.
9. The control box can now be attached to a cupboard wall by means of screws or strong double-sided tape.
10. Take the unconnected end of the PVC tube and cut it to a suitable length and not too short and apply enough pressure in connecting it to the nipple on the side of the control box.
11. Press the mounted button once and the waste disposer motor should start running. If the motor does not run, push the reset button on the waste disposer and check that the PVC tubing has been correctly fitted at both ends.
12. To stop the waste disposer, press the button again.



OPERATING INSTRUCTIONS

1. Remove the sink plug/stopper. Scrape the food waste into the waste outlet in the sink and turn on the cold-water tap/mixer. Cold water keeps food waste and fats solid so the waste disposer can work more effectively.



2. The following food waste can be quick and easily disposed of:
 - ✓ soft foods
 - ✓ poultry bones
 - ✓ fish heads/bones and shellfish shells.
 - ✓ egg and nut shells
 - ✓ vegetable/fruit peels and pips
 - ✓ mielie/corn cobs
 - ✓ coffee grounds and tea leaves
3. Do not attempt to dispose of the following in the waste disposer:
 - ✗ large and high density red meat bones
 - ✗ hot or boiling cooking oil and fat
 - ✗ all non-food items including food packaging

4. Use a wooden or plastic catering spoon to scrap any excess items into the waste disposer opening. To speed up the food waste disposal, cut or break up bones, rinds, and mielie cobs.
5. With the minimum amount of running water flowing into the machine, the waste disposer is activated through the use of the wall socket switch or pre-installed ON/OFF switch.
6. The powerful yet economic permanent magnet motor then spins the stainless steel grind ring at 2600 rpm in the case of the Model 2600 and 2700 rpm in the case of the Model 3300. The food waste in the disposer is then chopped up into 2mm to 3mm particles through the intense grinding of the impellers.
Note: There are no blades inside the food waste disposer.
7. Do not be alarmed if the waste disposer slows down while grinding as the machine is actually increasing torque (grinding power) and is working under normal conditions.
8. The centrifugal force of the grind ring and motor ensure that no particles remain which could block drains or cause damage to pipes.

CLEANING THE WASTE DISPOSER

The waste disposer is self-cleaning and scours its internal parts with each wash. With heavy usage, run hot tap water through the waste disposer to dislodge any stubborn food particles and odours. A small quantity of a mild detergent can be added.

Note: Do not use chlorine-based detergents or drain cleaners in the waste disposer. Also do not store chlorine-based products in the same cupboard where the waste disposer is installed. Do not lubricate the waste disposer in any way.

TROUBLE SHOOTING

a. Waste Disposer Motor Does Not Run

1. Unplug the power cable or switch OFF the ON/OFF switch. Remove the plug/stopper.
2. Using a the handle of a wooden or plastic catering spoon, push it into the top opening of the waste disposer and see if the turntable will

rotate freely. If it rotates freely proceed to points 3 and 4. If it does not rotate freely, proceed to trouble-shooting heading **Turntable Does Not Rotate Freely**.

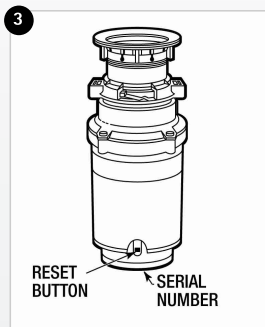
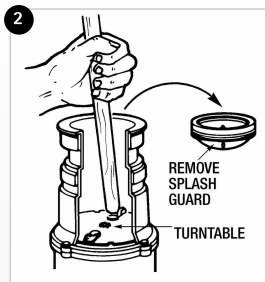
3. Check the reset button on the machine to see if it has not tripped. Push the reset button in until it clicks into place and remains depressed.
4. If the reset button has not tripped, check for shorted or loose cable connections. If all is intact and the motor still does not run, then it may have some internal problem, which will require repairing.

b. Turntable Does Not Rotate Freely

1. Check for any foreign matter or objects lodged between the turntable and grind ring. If there are, dislodge the object by rotating the turntable with a wooden or plastic spoon handle. Remove the object when it comes loose.
2. If there is no foreign matter or object and the turntable continues not to rotate freely, then there may be some internal problem.

c. Water Leaks

1. If the waste disposers leaks water at the top where it is attached to the sink mount assembly, then this could be due to one or more of the following:
 - Improper seating of the rubber sink flange, which may have moved off centre when tightening.
 - The fibre gasket may have cracked or split through over tightening.
 - The screw support ring may not be tight enough



- Improper installed cushion mount.
2. If leaks appear at the discharge elbow pipe, this is due to inadequate sealing of the join between the elbow and the plumbing pipe.

PRODUCT WARRANTY/GUARANTEE

It must be noted that Tourbillon Agencies have been appointed by Kwikot (Pty) Ltd to carry out all matters relating to the warranty/guarantee of the Kwikot Waste Wonder Food Disposer. Tourbillon Agencies will also be responsible for any repair work whilst the waste disposer is still under guarantee. Repair work undertaken by Tourbillon Agencies after the expiry period of the guarantee, will be for the owners account.

The Kwikot Waste Wonder is guaranteed for two years from date of installation, subject to the Warranty/Guarantee Card in this manual being completed in full and returned by post or faxed to Tourbillon Agencies. Alternatively, should Tourbillon Agencies have no record of the Warranty/Guarantee Card then the two-year guarantee period will be from date of purchase and the furnishing of a proof of purchase invoice will be required.

Should the waste disposer become faulty whilst still under guarantee, the following procedure must be followed:

1. Contact Tourbillon Agencies on Call Share Number 0860111490, by fax 0866638772 or by email info@tourbillon.co.za and provide your name, physical address and serial number of the waste disposer as it appears on the warranty/guarantee card that was sent to Tourbillon Agencies when the waste disposer was first installed, together with a contact telephone/cell number. If you are not the original owner of the waste disposer, obtain the serial number from the bottom of the waste disposer.
2. Provide a brief description of the nature of the problem i.e. not working at all, making a strange noise, motor running but not shredding the food waste etc.
3. Tourbillon Agencies will advise you of what course of action is to be taken in either trying to resolve the problem over the phone or having to uninstall the waste disposer from the installation and sending it in for repair work.

The warranty/guarantee is subject to a carry-in warranty and the waste disposer will have to be uninstalled and brought to Tourbillon Agencies in Johannesburg, which is at 264 Peach Drive, Northcliff Ext 4, Johannesburg. In other areas such as Durban, Port Elizabeth and Cape Town, Tourbillon Agencies will advise where the waste disposer must be hand delivered.

The food waste disposer is guaranteed against faulty materials and workmanship during manufacture. Tourbillon Agencies will repair or at its sole discretion replace the faulty waste disposer if it is beyond repair. Repairs or replacements carried out under guarantee, does not extend the warranty period on the product.

The warranty/guarantee does not cover the following:

1. Any foreign objects or matter placed into the waste disposer or any misuse of the waste disposer, which results in the direct cause of the waste disposer becoming faulty or damaged.
2. The installation of the waste disposer and materials used in the installation, including the ON/OFF switch.
3. Unauthorised parties besides Tourbillon Agencies repairing or trying to repair the waste disposer. In this instance the warranty/guarantee will become void.





INSTALLATION INSTRUCTIONS

The following step-by-step installation instructions must be properly read and carried out to ensure a problem-free installation. For any installation queries contact Kwikot (see contact details on back page). The installation should be carried out by a qualified plumber or experienced DIY person. Where electrical wall plugs and ON/OFF switches have to be installed and the installer is not familiar with electrical power and procedures, this must then be carried out by a qualified electrician.



MODEL
2600/3300



HOMEOWNERS / CUSTOMERS DETAILS

Name:

Physical address:

Postal address if different:

Contact Tel:

DETAILS OF KWIKOT WASTE WONDER FOOD WASTE DISPOSER
Purchase date:

Purchased from:

Serial no:

Model purchased: 2600 3300

(located at bottom of waste disposer)

NB: RETAIN THE PROOF OF PURCHASE INVOICE WHILST THE PRODUCT IS STILL UNDER THE TWO-YEAR WARRANTY PERIOD

DETAILS OF KWIKOT WASTE WONDER FOOD WASTE DISPOSER

Who installed the food waste disposer:

If a qualified plumber, supply the following details:

Name of plumbing company:

Name of plumber:

Contact Tel:

Cell:

Was an ON/OFF switch installed and if YES, what type?

YES

ELECTRICAL SWITCH

AIR SWITCH

NO

Date of installation: