



# WasteWonder

**DOMESTIC FOOD WASTE DISPOSER**



FOR THE EFFECTIVE,  
IMMEDIATE AND  
HYGIENIC DISPOSAL OF  
HOUSEHOLD FOOD WASTE  
IN AN ENERGY EFFICIENT  
AND COST EFFECTIVE  
MANNER

ELECTRIC DOMESTIC FOOD WASTE DISPOSER



# Waste Wonder

**DOMESTIC FOOD WASTE DISPOSER**



By-laws regarding the separation of household waste (The National Waste Management Amendment Bill of October 2007) was passed into Act in March 2009 and investing in a food waste disposer is contributing towards protecting the environment through the eradication of disposing of food waste in garbage bags, which becomes unhygienic with unpleasant odours, and harmful and potential bacteria can grow including the infestation of maggots.

## PRODUCT FEATURES

- Two Models to Choose from:
  - Model 2600 with a 1/4 horsepower motor, ideal for small families.
  - Model 3300 with a 3/4 horsepower motor, ideal for larger families.
- Can be installed on sinks and prep-bowls with:
  - 90mm waste outlets
  - 40mm waste outlets where the outlet is located not too close to the inner curvature of bowl and the outlet can be cut to a 90mm circular outlet.
- Soft foods, poultry bones, fish heads/bones and shellfish shells, egg and nut shells, vegetable/fruit peels and pips, mielie/corn cobs, coffee grounds and tea leaves can all be quickly and easily disposed of.
- Self-cleaning and scours its internal parts with each use.
- Grade 316 stainless steel components for food and medical applications.

## PRODUCT SPECIFICATIONS

- The powerful yet economic permanent motors spin the stainless steel grind ring to 2600 rpm on the Model 2600 and 2700 rpm on the Model 3300 and the fast grinding action by the impellers (no blades), chops the waste into 2mm to 3mm particles with minimum electricity usage and the particles flush through the plumbing system with little water usage.
- Supplied with a complete sink mount assembly for a 90mm waste outlet, 800mm 3-core electrical cable and discharge elbow pipe.
- Manufactured to ISO 9001 Management Standard.

## TECHNICAL SPECIFICATIONS

	<b>MODEL 2600 Product Code:</b>	<b>MODEL 3300 Product Code:</b>
Motor Horsepower:	1/2 Hp	3/4 Hp
Motor Speed :	2600 R.P.M	2700 R.P.M
Voltage:	220-240v	220-240v
Hz:	50/60	50/60
Amps:	2.25 Amp	3.0 Amp
Watts:	520W(100) 5.2 (110-220), 2.25(220-240)	520W(100) 5.2 (110-220), 2.25(220-240)
Motor Type:	Permanent Magnet	Permanent Magnet
Sink Flange:	Stainless Steel & Celecon	Stainless Steel & Celecon
Stopper:	Positive Seal	Positive Seal
Splash Guard:	Removable	Removable
Feed type:	Continuous	Continuous
Grind Ring:	Stainless Steel	Stainless Steel
Swivel Impellers:	Stainless Steel	Stainless Steel
Turntable:	Stainless Steel	Stainless Steel
Grinding Chamber:	Corrosion Proof Glass Filled Polyester	Corrosion Proof Glass Filled Polyester
Overload Protector:	Manual Reset Type	Manual Reset Type
Warranty:	2 years	2 years



## INSTALLATION SPECIFICATIONS

### PLUMBING INSTALLATION:

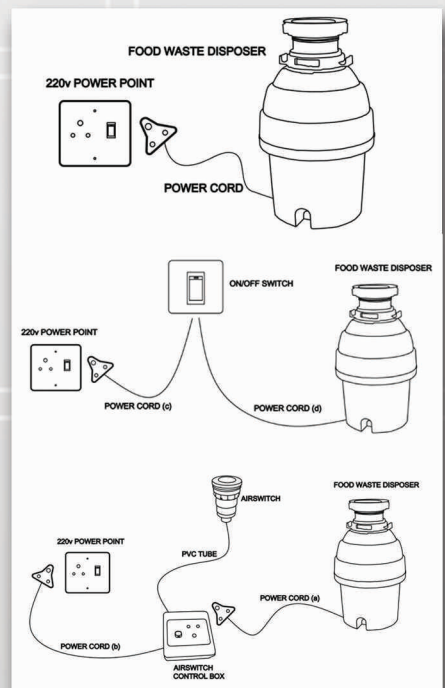
Must be installed by an experienced or qualified plumber.

- In a new sink installation the plumbing pipe work can be tailor-made to accommodate the food waste disposer, including an option to connect a dishwasher outlet to the food waste disposer.
- In an existing sink installation the plumbing pipe work will have to be altered to accommodate the food waste disposer.

### ELECTRICAL INSTALLATION:

Where the electrical connection requires the installation of a three-prong wall socket and connection thereof to a circuit breaker on the DB board, this work must be carried out by a qualified electrician.

- A three-prong wall socket must be available.
- The food waste disposer can be operated directly from a three-prong wall socket, an electrical ON/OFF switch mounted away from the water source and away from any moisture, or by means of an Air-Switch with control box, which can be mounted into a wooden counter top or into a flat portion of the sink top. Switches are not supplied.



**KWIKOT (PTY) LTD**  
**INLAND DIVISION**  
 PO BOX 1016, BENONI, 1500  
 TEL: (011) 897 4600, FAX: (011) 914 4750  
 DOMESTIC SALES: sales.inland@kwikot.com  
 EXPORT SALES: sales.export@kwikot.com  
 MARKETING: marketing.info@kwikot.com  
 TECHNICAL: technical.info@kwikot.com

**KWIKOT (PTY) LTD**  
**EASTERN CAPE DIVISION**  
 PO BOX 3082, NORTH END,  
 PORT ELIZABETH, 6056  
 TEL: (041) 373 0575  
 FAX: (041) 373 0577  
 DOMESTIC SALES:  
 sales.easterncape@kwikot.com

**KWIKOT (PTY) LTD**  
**WESTERN CAPE DIVISION**  
 PO BOX 443,  
 EPPINDUST, 7475  
 TEL: (021) 534 3691  
 FAX: (021) 534 1606  
 DOMESTIC SALES:  
 sales.westerncape@kwikot.com

**KWIKOT (PTY) LTD**  
**KWAZULU-NATAL DIVISION**  
 PO BOX 47366  
 GREYVILLE, 4023  
 TEL: (031) 574 8700  
 FAX: (031) 574 8750  
 DOMESTIC SALES:  
 sales.kwazulunatal@kwikot.com

AFTER-SALES-SERVICE: 0861 KWIKOT (594568)

[www.kwikot.com](http://www.kwikot.com)