



FAÇADE CLADDING

System Solutions for Curtain Walls

Foreword

This brochure is an overview of panel systems available from RHEINZINK worldwide.

This overview shall serve as a guide for planning and design, in accordance with current state-of-the-art building engineering and proven development trends. We would explicitly like to point out that situations may arise, in which this type of cladding may not be used or may be restricted in its use. Therefore, the design drawings illustrated herein pertain to standard system details only. The planner must consider how the system itself, along with local and climatic conditions and structural physics will impact the project.

Compliance with application technology and standards described in this document does not preclude personal responsibility.

We reserve the right to make amendments based on developmental changes. For questions pertaining to the system, please contact our Application Engineering Department. Your suggestions are always welcome!

Datteln, July 2010



TRUMPF Sachsen GmbH, Neukirch, Germany



Terrace-shaped building,
Oswaldgasse, Vienna, Austria

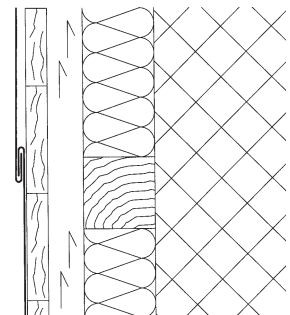
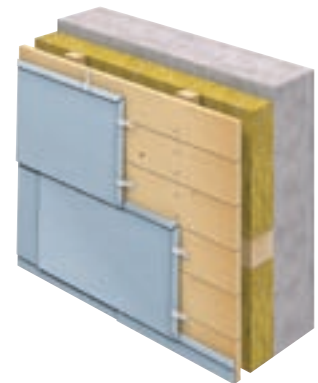


New Lecture Hall, Victoria University,
Werribee Campus, Werribee, Australia

RHEINZINK-Flat-Lock Tiles

Flat-lock tiles are used primarily for large curtain wall areas. This is where the visual effect is the most impressive. By using different sizes of tiles and by changing up the layout of the seam lines, the planner has many options for façade designs. RHEINZINK-Flat-Lock Tiles are available in "blue-grey" and "graphite-grey" preweathered versions, as well as in the bright rolled version. The bright rolled version opens up additional design potential; natural weathering of this material enhances the nuance of colour of each individual tile, creating a very special effect. For quality assurance and optimal material usage efficiency custom production is recommended.

- Individual tile sizes
- High degree of design freedom
- Three patinating surfaces
- Environmentally declared product





Olympic Stadium, Jinan, China



Head Offices of Berlinwasser Holding AG, Berlin, Germany

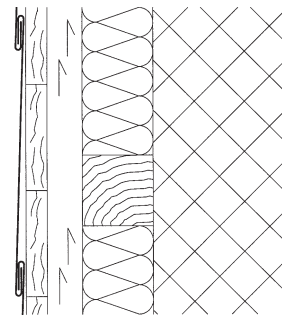
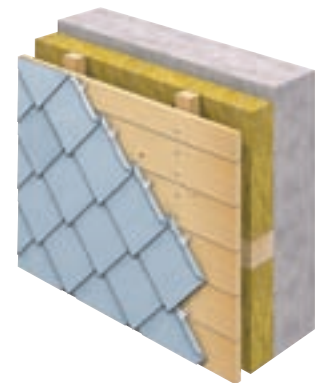


Sir Colin Campbell Building, University of Nottingham, Great Britain

RHEINZINK-Small Tiles

Square and diamond-shaped tiles make up RHEINZINK's small tile group. Contrary to sheets or shingles, these tiles have forward facing edges on the top surface and backward facing edges on the lower surface to form simple lock joints. The small format of these tiles permits secure and aesthetically pleasing solutions to be realized, particularly for geometrically complicated buildings. Virtually all corners and curves can be accommodated. Dormer, chimney head and roof edges are some of the more conventional applications for small tiles.

- Available in various sizes
- Flexible adaptation to building shapes
- Three patinating surfaces
- Durable and maintenance free





Zinkhaus, Copenhagen, Denmark



Perth Convention & Exhibition Centre, Perth, Australia

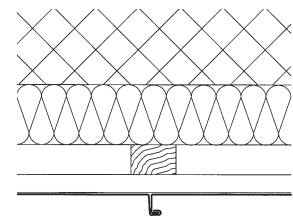


Villa, Prague, Czech Republic

RHEINZINK-Seam Technology

RHEINZINK-seam systems join individual panels longitudinally. The angled standing seam is used primarily for curtain walls. Its distinguishing feature is the bold accentuation of its seams (ca. 12 mm width). A variety of panel lengths and widths, allows even the most elaborate shapes to be realized using seam technology. The availability of machines guarantees efficient and consistent forming of panel edges and closing of seams.

- Suitable for almost every building shape or style
- A variety of panel widths is available
- Three patinating surfaces
- Little or no maintenance or service required





Train Station Passageway, Uster, Switzerland



Private Residence, Empel, Netherlands

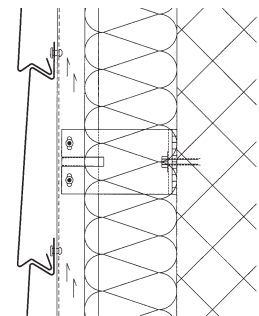


*MG AVU Galerie der modernen Kunst
Akademie bildender Kunst, Prague,
Czech Republic*

RHEINZINK-Shiplap Panel

Due to its layered characteristics and shadowless joint, the shiplap panel is a particularly unique façade cladding, reminiscent of wooden façades. When exposed to light and shade, interesting shadows and sharp contours appear because of its profile geometry. Precision profile manufacturing (in accordance with detailed planning and pre-defined panel dimensions) guarantees efficient and optimum installation on site.

- Layered sheath look
- A variety of panel widths are available.
- Two preweathered surfaces
- No maintenance or painting





University of Nottingham, Business School, Nottingham, Great Britain



Theater am Marientor (previously: Les Misérables), Duisburg, Germany

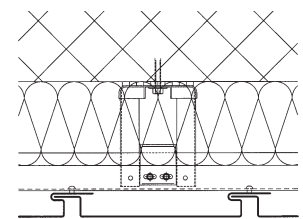


Tropical Islands, Briesen-Brand, Germany

RHEINZINK-Reveal Panels

The benefit of the reveal panel is the choice of bay widths (200-333 mm) and variable joint widths of 0-30 mm. With the flexibility of vertical and diagonal installation, the reveal panel offers the architect an exceptional amount of freedom in implementing their design ideas. Configured panels with an extremely wide range of shapes can be realized. Therefore, permanent quality solutions can be implemented very quickly when it comes to renovations or retrofitting insulation.

- A panel system, with different visual effects
- Choice of reveal and panel widths
- Preweathered surface quality
- Environmentally declared product





Private Residence, Berlin, Germany



Multisport Complex, Walferdange, Luxembourg

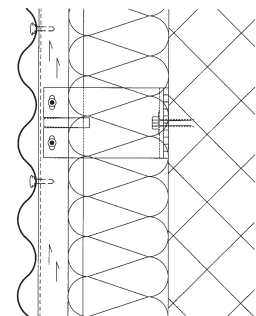
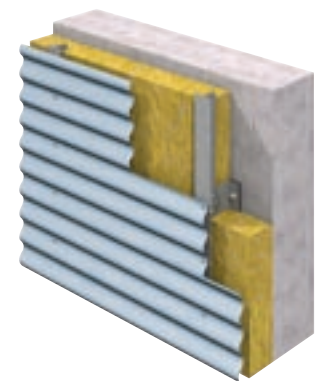


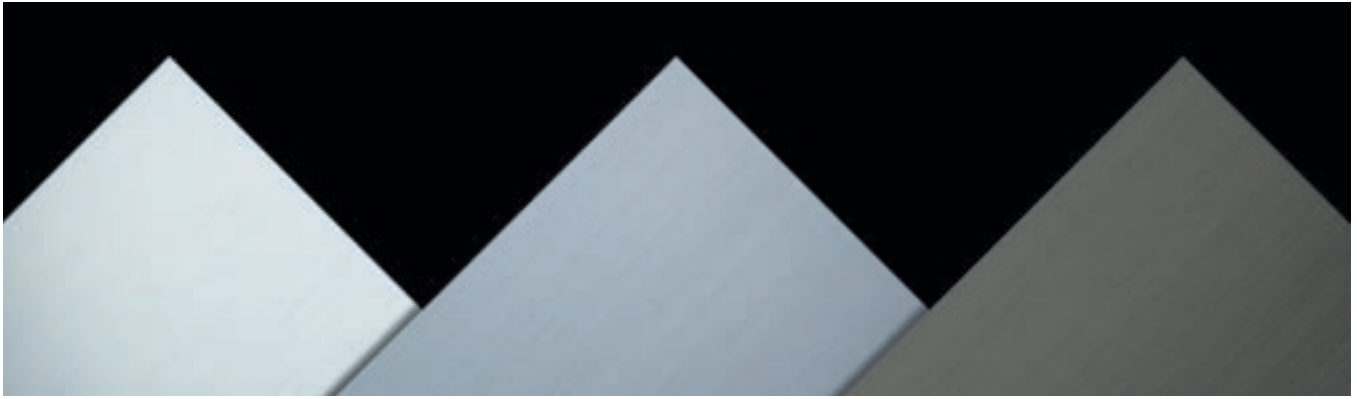
Private Residence, Datteln, Germany

RHEINZINK-Corrugated Profiles

The fluid design of the conventional sine wave gives the corrugated profile a filigreed look. Various types of installation – horizontal, vertical or diagonal – permit detailed panelization or clearly visible segmentation of the façade image, panel by panel. The soft interplay of light and shadow creates a vitality on these large surfaces that is both aesthetically interesting and appealing.

- Flexible application as a result of large formats
- Accentuated façade design
- Preweathered surface quality
- Diverse corrugated formats upon request





RHEINZINK-bright rolled

RHEINZINK-“preweathered^{pro} blue-grey”

RHEINZINK-“preweathered^{pro} graphite-grey”

Three natural surfaces

The ecological Material

Within the realm of sustainable building, the environmental compatibility of building products is becoming increasingly important. This, in turn, influences the decision-making of building owners and planners when selecting materials. Apart from durability, the focus is on the amount of energy used during production, the rate of recycling and the energy savings attained as a result of the high rate of recycling.

Durable and sustainable

Traditionally, environmental compatibility has been extremely important to RHEINZINK. Ecological standards are set during raw material extraction and processing: energy consumption is extremely low. Modern production equipment reduces emissions to a minimum. RHEINZINK is 100% recyclable; a lifespan of several decades, also sets very high standards. Apart from exemplary ecological properties, the “self-healing” material surface is telling: the protective, aesthetic patina which develops through weathering, naturally evens out any scratches or other smaller damage, thereby guaranteeing maintenance-free lifespan lasting decades. This applies equally to the bright

rolled and “preweathered^{pro}” RHEINZINK surfaces. Once the roof, façade cladding or roof drainage system has run its course, RHEINZINK is still very valuable: as the energy expended for recycling is only about 5% of the primary energy content and, because the goal is to get up to 60% of the raw material price for high-purity zinc scrap metal, to decide for RHEINZINK is to decide in favour of future generations. Thanks to the high rate of recycling – over 95% – a further reduction of energy requirements for primarily material is achieved. In the RHEINZINK manufacturing process, any production scrap is fed back into the smelting process without any additional pre-treatment.



QUALITY ZINC Certificate



TÜV Certificate DIN EN ISO 9001:2008 and ISO 14001:2004



IGEF Certificate



ECO Environmental Declaration

Please see www.rheinzink.com and www.follow-your-inspiration.com for many other exemplary solutions for working creatively with RHEINZINK. We would also be pleased to send you detailed information on the diverse RHEINZINK-Program!



RHEINZINK South Africa
PostNet Suite No. 450
Private Bag X16 · Constantia 7848
South Africa

Phone: +27 21 6712600
Fax: +27 21 7947634

info@rheinink.co.za
www.rheinink.co.za