



# Multitop PRO

Gear locks for aluminium doors





[cisamultitop.com](http://cisamultitop.com)

# MULTITOP PRO

## Designed to resist.

**Corrects heat distortion of the door: reduced maintenance, greater energy savings.**

**CISA technology against forced entry.**



### **CORRECTS HEAT DISTORTION**

The “effort reducing” gear mechanism makes it easier to turn the key, and the 12 mm thick deadbolt with its more rounded design, offer an effective solution to close and secure doors subject to heat distortion.

### **HIGH SECURITY**

- The new locking system with its hook (CISA patent registered) and the deadbolt with its increased thickness (12 mm) guarantee increased resistance to forced entry.
- Offers greater resistance to forced entry as the deadbolts are independent of the central mechanism.

### **ELECTRIC VERSION**

The CISA Multitop Pro series offers a complete range of electric locks with a 15.5 mm thick case. With fewer holes needed on the profile, so the lock can be correctly installed on thermal cut and European groove profiles.

### **INTERCHANGEABILITY**

The new CISA Multitop Pro is completely interchangeable with previously installed versions with no additional work needed on the door.

### **CERTIFICATION**

CISA Multitop Pro is certified:

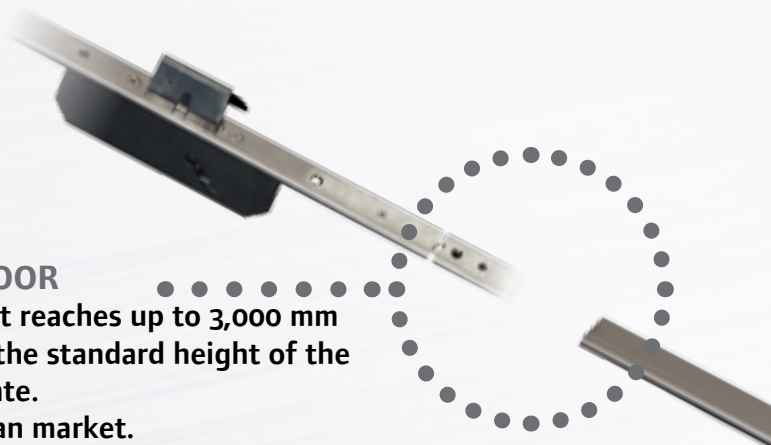
- **Short faceplate version according to the European Standard EN 12209:03:**  
Grade 6 Security – 1,000 kg for lateral thrust and 600 kg for front load.
- **Long faceplate version according to the European Standard prEN 15685:10:**  
Grade 6 Security – 1,000 kg for lateral thrust and 600 kg for front load.  
Grade 7 Security - like Grade 6 with the use of protective plates 06436 Series.

### COVERS THE ENTIRE DOOR

An extension that reaches up to 3,000 mm can be added to the standard height of the 2,300 mm faceplate.  
New for the Italian market.

#### Benefits:

- Improves aesthetics
- Increases security and to hermetically seal the door

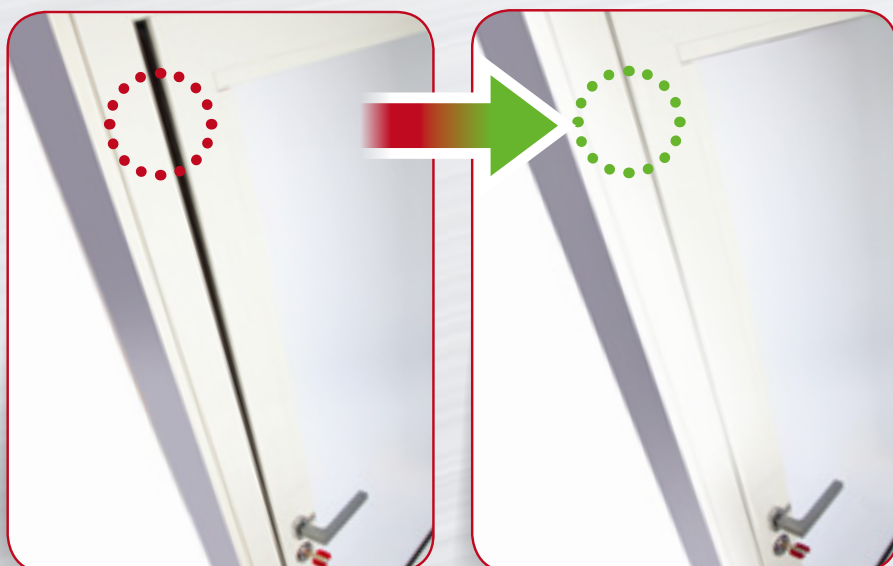


### CORRECTS HEAT DISTORTION

The "effort reducing" gear mechanism that makes it easier to turn the key, and the 12 mm thick deadbolt with its more rounded design, offer an effective solution to close and secure doors subject to heat distortion.

#### Benefits:

- Hermetic seal increasing the energy savings
- Cuts maintenance times and costs for the installer





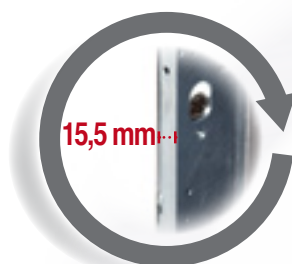


### HIGH SECURITY

- New locking system with hook in hardened steel (CISA patent registered)
- Horizontal sliding deadbolt with increased thickness (12 mm)
- Deadbolts independent of the central mechanism
- Deadbolts protected with a hardened steel plate

#### Benefit:

- Greater resistance to forced entry

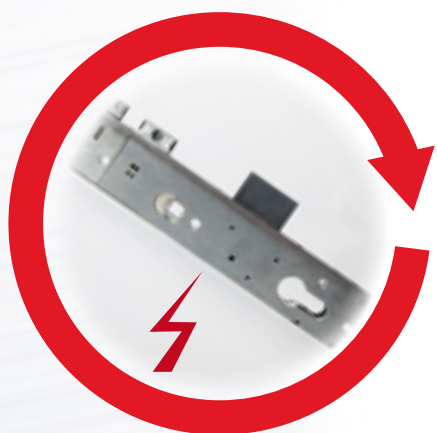


### CASE THICKNESS

The cases are 15.5 mm thick.

#### Benefit:

- Fewer holes are needed on the profile and the lock is correctly installed on thermal cut and European groove profiles

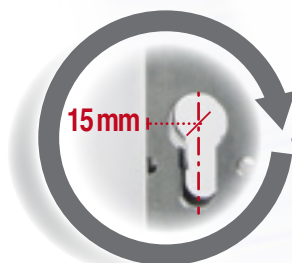


### ELECTRIC VERSION

Multitop Pro series offers a complete range of electric locks with a 15.5 mm thick case (as with the mechanical version) and with a dead-locking device on the latchbolt.

#### Benefits:

- Fewer holes are needed on the profile and the lock is correctly installed on thermal cut and European groove profiles
- Increases security for doors which are locked with the latchbolt only



### INTERCHANGEABILITY

- Completely interchangeable with previously installed versions
- Backsets from 25 to 40 mm
- Highly compact thanks to the distance from the cylinder (15 mm)
- Interasse 85 e 92 mm

#### Benefits:

- No additional work needed on the door
- Cylinder always correctly positioned
- No holes needed on the back part of the profile during installation

# MULTITCP

## PRO

### INTERCHANGEABLE LATCHBOLT

The CISA Multitop Pro range is available in the latchbolt version.

The following operations are possible:

- Change from latchbolt to roller directly from the lock faceplate (CISA patent registered)
- Insert the latchbolt backwards for the deadbolt only version

#### Benefits:

- Reduced stock
- More flexible adjustments
- The roller can be replaced even when the lock is installed
- No need for additional accessories for the deadbolt only function

### CLOSED CASE

The lock and divertors cases are enclosed, including the hooks on the rods.

#### Benefits:

- Dirt and dust cannot get in
- Eliminates the possibility of damage during installation

### TOTAL PROTECTION

The lock can be fitted with 4th and 5th locking points.

#### Benefit:

- Greater security for two-leaf doors



### FINISHES AVAILABLE

- Faceplate in stainless steel
- Faceplate in black painted stainless steel



## APPLICABLE ACCESSORIES

For top performance, security and guaranteed smooth operation complete Multitop Pro with the following CISA accessories.

Adjustable  
strike plates  
06463 and 06465  
series

Extension kit  
up to 3,000 mm  
06444 series

Top-of-the-range  
cylinders

Cylinder  
protective roses  
06460.05.0 series

Watch CISA product tutorials  
on YouTube at CISALocks.



## About Allegion

Allegion (NYSE: ALLE) creates peace of mind by pioneering safety and security. As a \$2 billion provider of security solutions for homes and businesses, Allegion employs more than 7,800 people and sells products in more than 120 countries across the world. Allegion comprises 23 global brands, including strategic brands CISA®, Interflex®, LCN®, Schlage® and Von Duprin®.

For more, visit **[allegion.com](http://allegion.com)**

