



Locking
systems for
armoured
doors

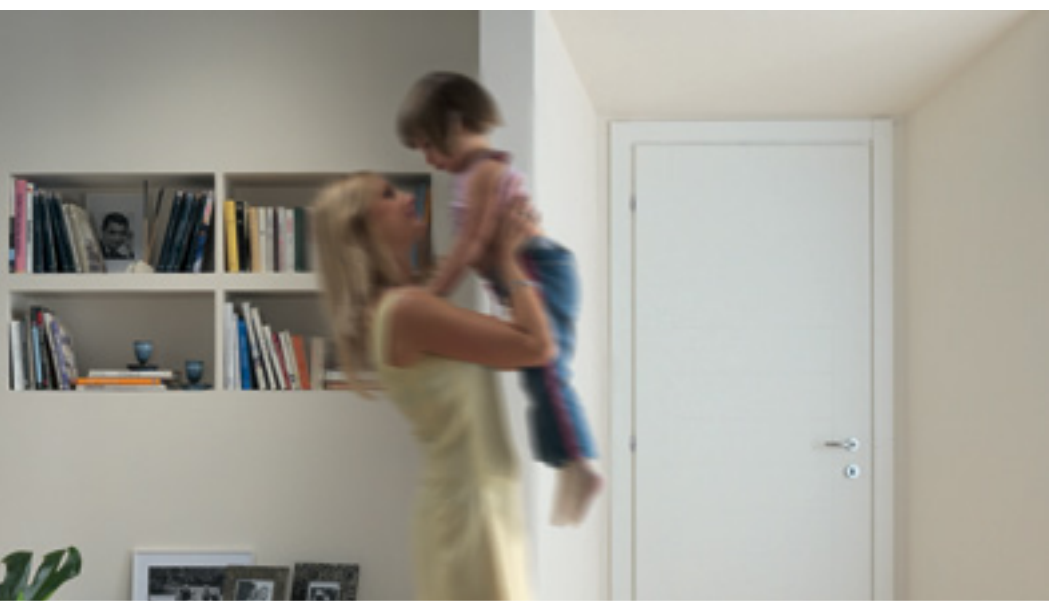




Locking systems for armoured doors

When it comes to security, CISA is at the forefront. CISA is the European leader in the field of locking and access control systems. The company has six production facilities and is active in over 70 world countries to produce and market cylinders and locks for any type of door, electronic locks, panic exit devices, door closers, safes and padlocks. Today, CISA is part of Ingersoll Rand, one of the top multinational companies specializing in integrated security, refrigeration and compressed air system solutions. CISA has always been customer-oriented and rigorously complies with the strictest standards prescribed by the EUROPEAN STANDARDS in force (UNI EN 12209:03 and UNI EN 13013). Each of its products is the result of permanent research, aimed at guaranteeing innovation and sheer excellence. CISA brings to security systems universally acknowledged as the safest and most reliable the added value of its exclusive locks, the 'heart' of any security system, without which even the strongest armoured doors would be vulnerable.

Safe, easy, reliable: CISA





Live your home, feel safe in your environment: CISA is there to protect it and protect you with its range of solutions designed specially for you.

*Secure home when you are away?
Sure, with CISA*





Every public place, every environment used by many different people must be secure, for everyone. CISA knows: that's why it has developed special systems to offer the highest degree of protection in compliance with all the applicable security standards.

The range

Exitlock



ComFortlock



Revolution



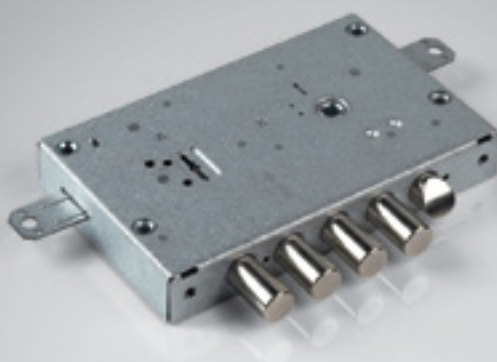
A locking system 'made to measure' for every door

So much more than just locks: the protective mechanisms built by CISA are precision devices, accurate and reliable, to choose from a range of solutions, different by degree of security and complexity, perfectly suitable for all kinds of installation and available in two dimensional standards to guarantee maximum compatibility.

New Cambio Facile



Standardlock



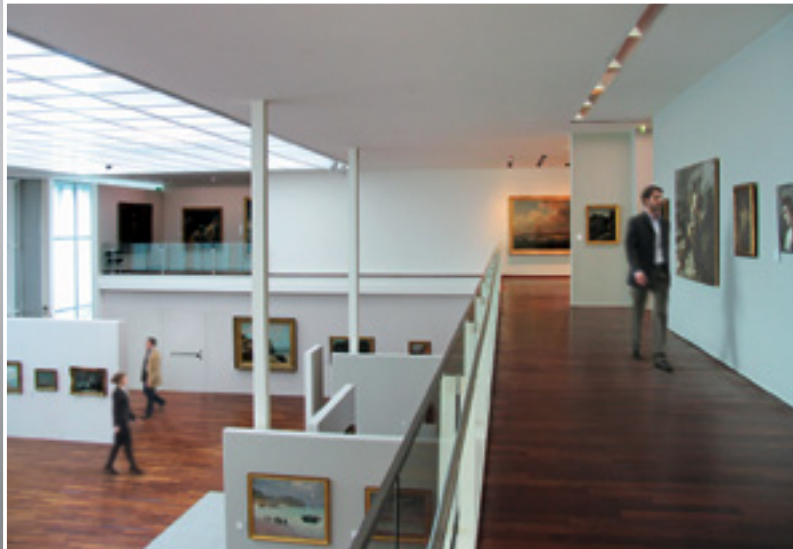
Multifunction



6 systems designed to respond to the different needs of every customer:

- Exitlock System
- Revolution System
- Standardlock System
- ComFortlock System
- New Cambio Facile System
- Multifunction System

European cylinder Exitlock System



CE CERTIFICATION & MARKING

The adopted technical solutions and the materials used guarantee compliance with the strictest regulation requirements. This has enabled CISA to obtain marks and certificates including:

- CE mark according to the 89/106/CE DIRECTIVE.

Reference standards:

- UNI EN 1125: panic exit devices;
- UNI EN 179: emergency exit devices;
- UNI EN 12209: fire resistant door devices.

- Voluntary product certification issued by ICIM third-party certifying body according to the UNI EN 1125 standards for specific CISA panic exit touch bars.

For top level performances, CISA recommends:



Protective
rose



Cylinder
RS3 S



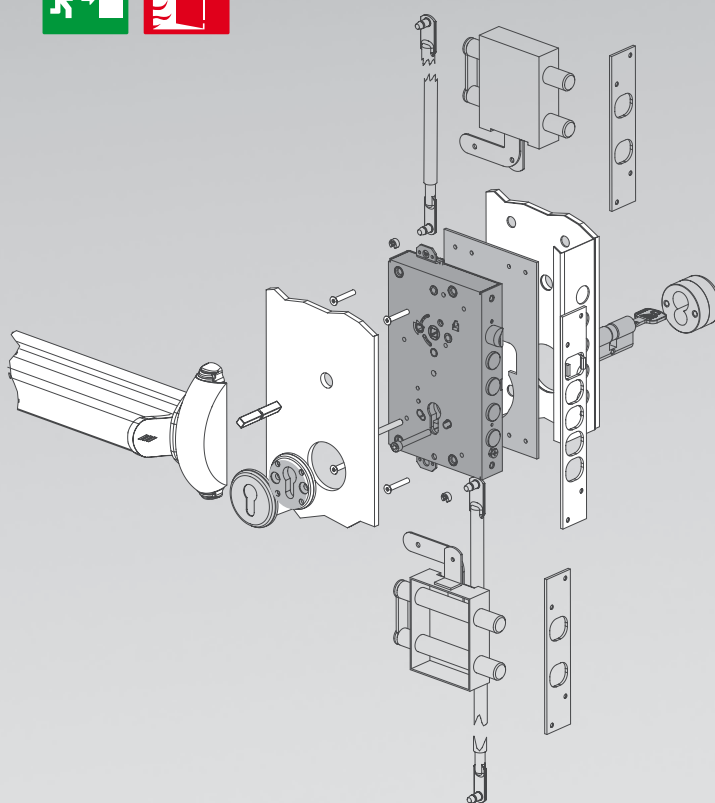
Ideal product to install anti-intrusion systems with panic exit devices in public buildings. CISA patented system.

OPERATION

- Exitlock is a product range specially designed for use in public buildings.
- It enables to secure a door with the key and (in compliance with the EUROPEAN STANDARDS applicable to public buildings) to unlock the door from inside by pressing down the panic exit touch bar (UNI EN 1125) and/or the handle (UNI EN 179).

It makes it possible to control access when the door is only closed with its latchbolt (deadbolts all the way back) in 3 different ways:

- Access management A. Key only (only users with a key may enter).
- Access management B. Handle to be enabled by the key (public access authorized during certain times of the day).
- Access management D. Handle always enabled. (public access always authorized when deadbolts are pulled back).



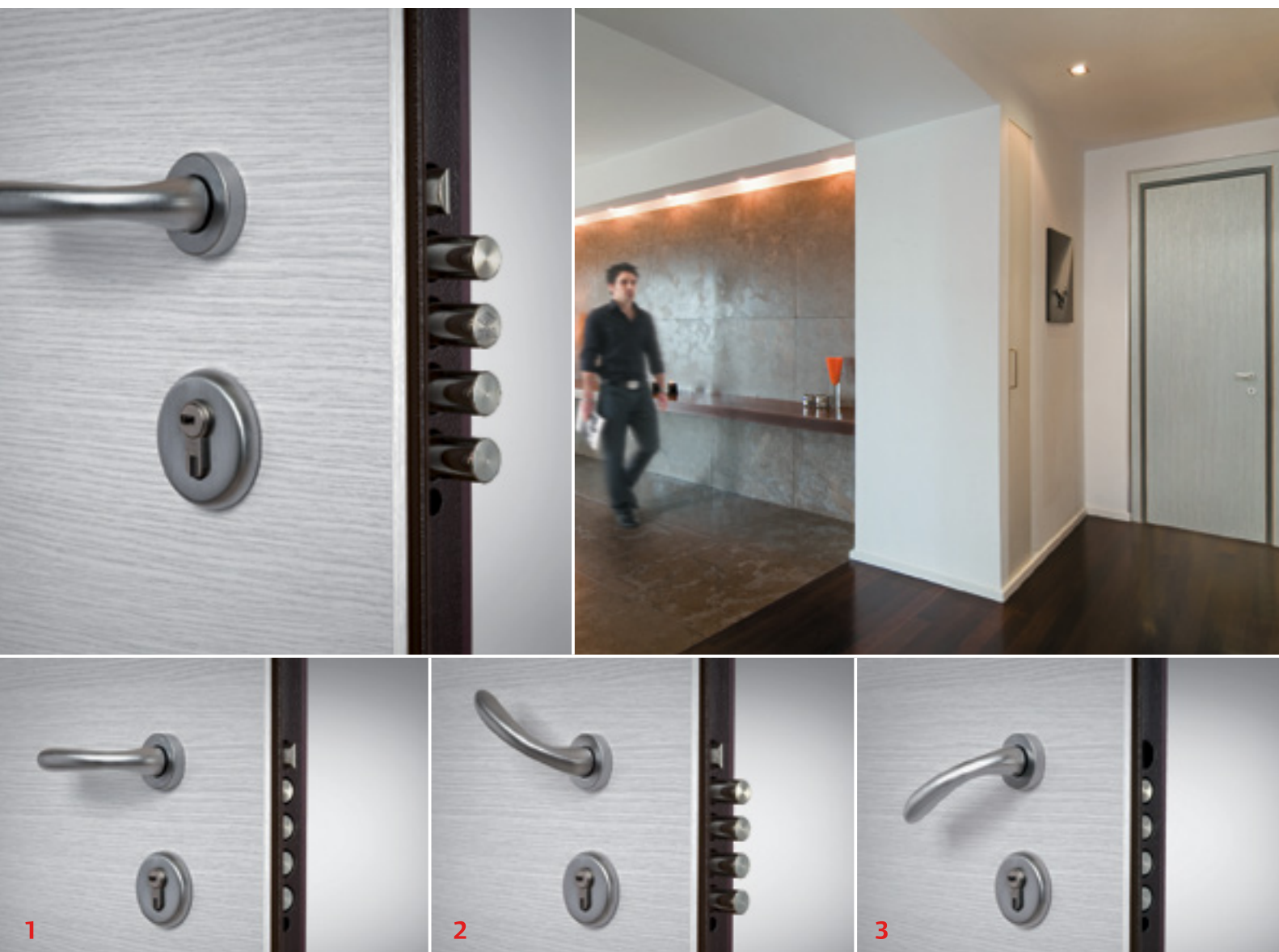
SECURITY

- Anti-intrusion protection is guaranteed by the CISA European profile cylinders, true technological jewels.
- In conjunction with the CISA AP3 and RS3 cylinders and pulling and drilling resistant PROTECTIVE ROSES, Exitlock guarantees compliance with the strictest security standards provided for by the applicable European regulations.

CHARACTERISTICS

- Ideally suitable for installation in public buildings: anti-intrusion protection combined with a special function allowing quick unlocking from the inside in case of emergency.
- Suitable for mass access places such as hospitals, office blocks, schools etc.: up to DM 03/11/2004 standards regarding the obligation to install panic exit devices on doors along the escape routes from public places.
- It enables to manage public access according to the building requirements (function type A, B and/or D).
- Can be installed in conjunction with a master-key system to open several doors (gate, garage, armored door).

European cylinder ComFortlock System



CE CERTIFICATION & MARKING

The adopted technical solutions and the materials used guarantee compliance with the strictest regulation requirements. This has enabled CISA to obtain marks and certificates including:

- CE mark according to 89/106/CE DIRECTIVE.

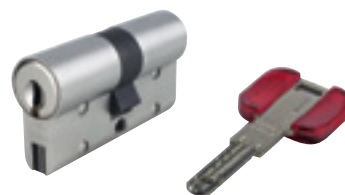
Reference standards:

UNI EN 12209: fire resistant door devices.

For top level performances, CISA recommends:



Protective
rose



Cylinder
RS3 S



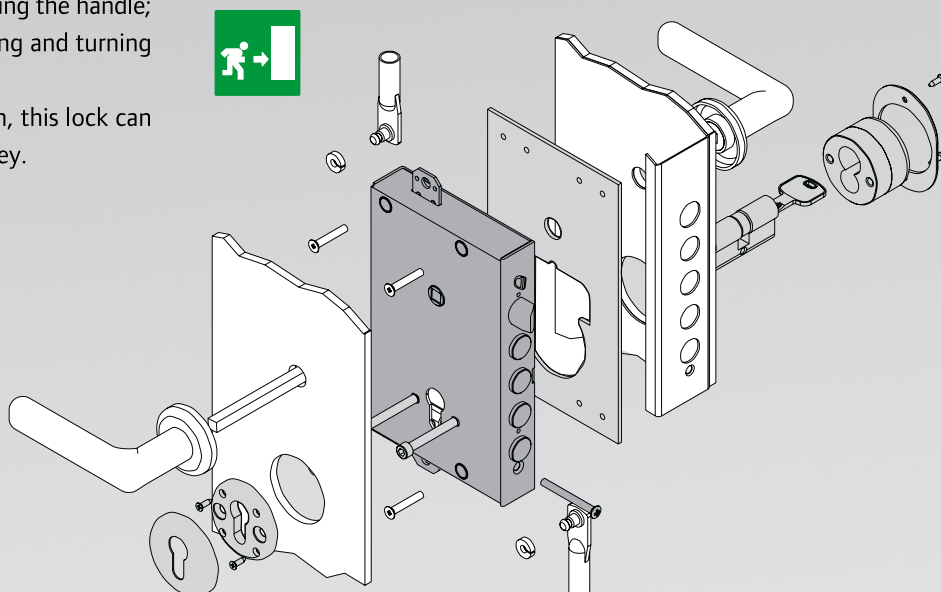
Ideal product to feel perfectly secure with a single gesture. CISA patented system.

OPERATION

- With its simple, but extremely smart design, ComFortlock is the ultimate creation in CISA's private use range.
- It enables to secure a door from the inside by simply lifting the handle. Unlocking is just as easy: in case of emergency, the door can be unsecured by lowering the handle (the unlocking function can be enabled at the user's discretion).
- To secure a door from the outside when the user leaves home, it is enough to just lift the handle. Obviously, in this case, opening will not be obtained by lowering the handle; opening can only be obtained by introducing and turning the specially supplied key.
- In any situation and at the user's discretion, this lock can be operated in the traditional way with a key.

SECURITY

- Protection is guaranteed by the CISA European profile cylinders, true technological jewels.
- In conjunction with the CISA AP3 and RS3 cylinders and pulling and drilling resistant PROTECTIVE ROSES, ComFortlock guarantees compliance with the strictest security standards provided for by the applicable European regulations UNI EN 1303 and UNI EN 12209:03.

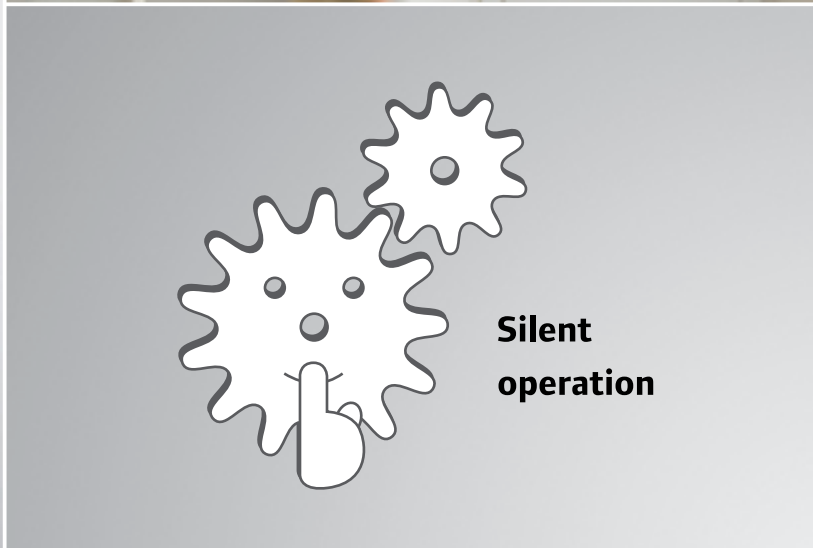


CHARACTERISTICS

Ideally suitable for private buildings:

- it takes only one click (one handle rotation upwards) to secure a door;
- if the user chooses to activate this function, unsecuring can be done from the inside by simply lowering the handle;
- the key will still be used as a traditional key but it is only necessary to open the door from the outside;
- can be installed in conjunction with a master-key system to open several doors (gate, garage, armored door).

European cylinder Revolution System



CERTIFICATES

The Revolution locks have been designed and tested to meet the strictest requirements provided for by the European standard UNI EN 12209:03.

For top level performances, CISA recommends:



**Protective
rose**



**Cylinder
RS3 S**

The ideal product for all the customers expecting top performances from a small key. CISA patented system.

OPERATION

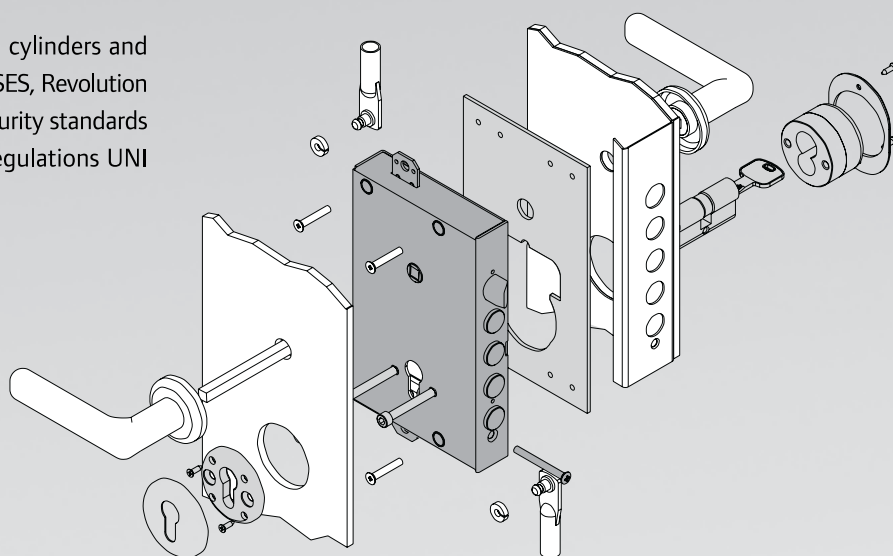
- Smaller, lighter key than a traditional bitted key.
- Revolution is fitted with a special, effort-reducing gear mechanism which ensures smooth key rotation when operating the lock.
- Specially designed to enable the fitting of additional deadlocks without impairing the smoothness of operation.

SECURITY

- Protection is guaranteed by the CISA European profile cylinders, true technological jewels.
- In conjunction with the CISA AP3 and RS3 cylinders and pulling and drilling resistant PROTECTIVE ROSES, Revolution guarantees compliance with the strictest security standards provided for by the applicable European regulations UNI EN 1303 and UNI EN 12209:03.

AVAILABLE MODELS

- With and without latchbolt, with electrically operated latchbolt, with front locking or three locking points.
- Double dimensional standard.
- Double lock version (Multifunction Cylinder/Cylinder): 2 locks, coupled to obtain a single product carrying out different types of function (version with security lock, version with service lock and version with service lock and opening limiting device).



CHARACTERISTICS

- Can be installed in conjunction with a master-key system to open several doors (gate, garage, armored door).
- The "1-2-3 system" can be adopted upon request, to be able to modify the cylinder bitting twice if the key is lost, making it impossible to use earlier keys.
- For customers who employ service staff, it is possible to install the "DADA system" in its multifunction version to ensure access control.

Recommended devices

Additional devices to increase the lock security.

PROTECTIVE ROSES FOR EUROPEAN CYLINDER LOCKS

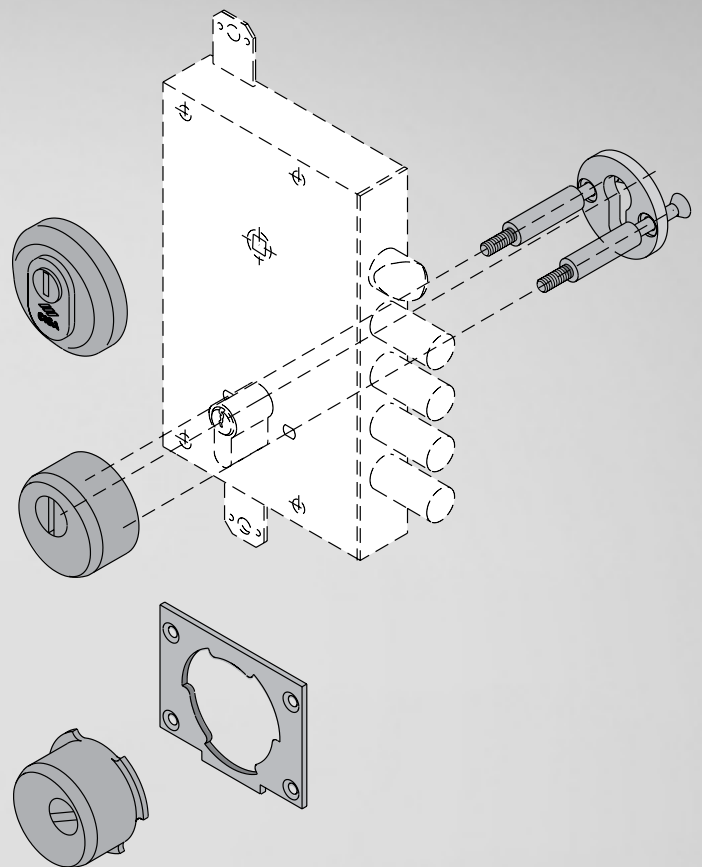
Clearly visible from the outside, these round shaped escutcheons act as effective deterrents against burglars and actual shields all around the cylinder, protecting it from being reached by forcing tools.

Maximum security can be achieved by installing a lock with a mounting plate and a three-lobe protective rose (CISA patent).

The products in this range are available in different finishes to match different door aesthetic requirements.

MOUNTING PLATES

They facilitate lock installation on the door and thanks to a manganese insert, protect locks against drilling action. They are installed between the door and lock to protect the whole locking assembly.

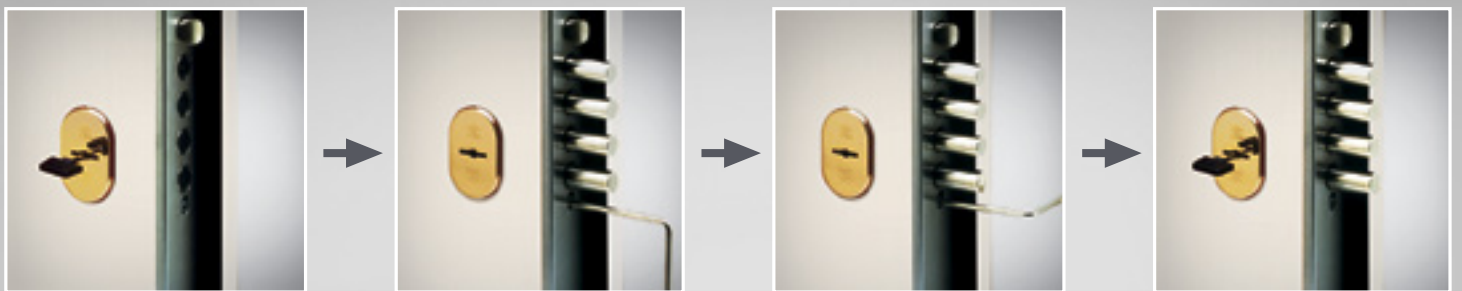




PROTECTIVE ROSES

Protective roses available in different finishes to meet door finish (handle, hinge) matching requirements.

New Cambio Facile System double-bitted key rekeyable locks



CERTIFICATES

The New Cambio Facile locks have been designed and tested to meet the strictest requirements provided for by the European standard UNI EN 12209:03.

The ideal product for all the users who wish to or have to frequently change their key. CISA patented system.

OPERATION

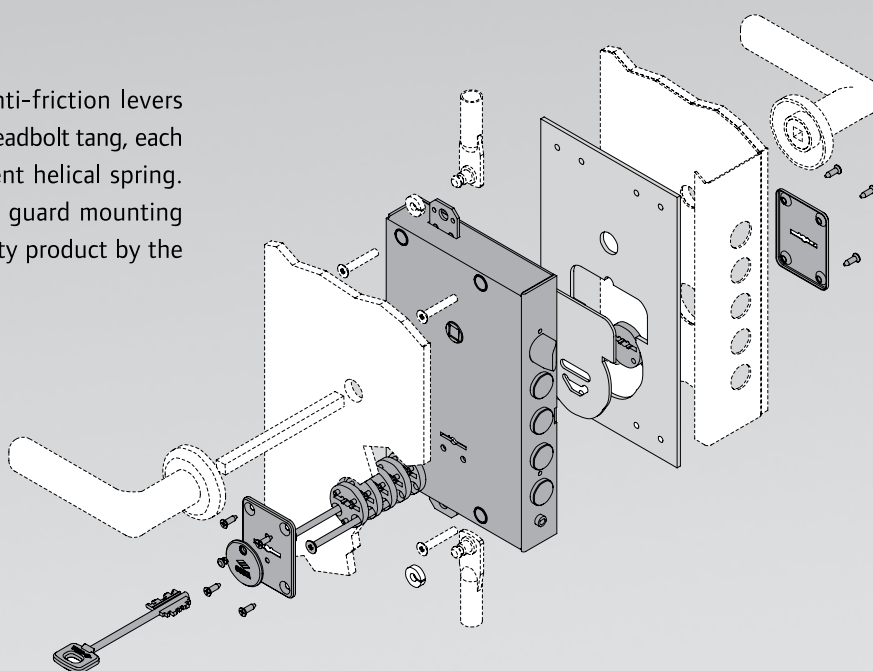
- If keys are lost, or whenever keys must be temporarily left with strangers, the lock key biting can be changed at any time.
- The keys can be changed easily, without having to disassemble the lock or parts of it, and for an unlimited number of times.
- Double dimensional standard to meet any installation requirements.
- Double lock version (Multifunction New Cambio Facile/Cylinder): 2 locks, coupled to obtain a single product carrying out different types of function (security lock, service lock and service lock and opening limiting device).

SECURITY

- The double-bit key operates the 6 anti-friction levers arranged in two sets, separated by the deadbolt tang, each lever being activated by an independent helical spring.
- Coupled with special manganese steel guard mounting plates, the System is rated a top security product by the European Standard UNI EN 12209:03.

AVAILABLE MODELS

- With and without latchbolt, with electrically operated latchbolt, with front locking or three locking points.



CHARACTERISTICS

The system enables to change the key easily without having to change the lock. No expensive professional service required.

Spare key set



For top level performances, CISA recommends:
BITTED CYLINDER.



Standardlock double-bit key System



CERTIFICATES

The CISA 6 lever Double Bit Key locks have been designed and tested to meet the strictest requirements provided for by the European standard UNI EN 12209:03.

The ideal product for anyone looking for patented security.

OPERATION

- With its CISA-patented “independent key bitting” system and variable distance between the apexes of two opposite bitting depths, this lock guarantees extra security compared to traditional locks with “fixed bit distance”, easier to tamper with.
- The double-bit key operates the 6 anti-friction levers arranged in two sets, separated by the deadbolt tang, each lever being activated by an independent helical spring.
- Coupled with special manganese steel guard mounting plates, this System is rated a top security product by the European Standard UNI-EN 12209:03.

SECURITY

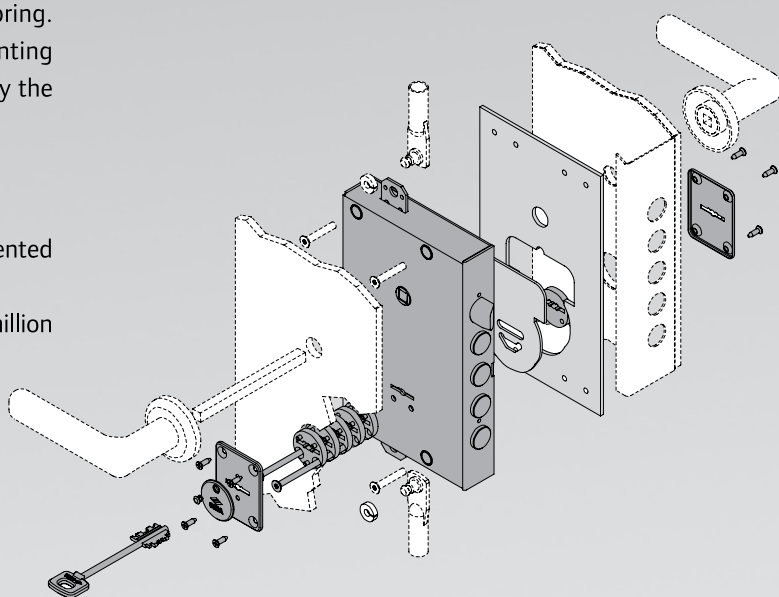
- These locks’ security is guaranteed by the CISA-patented “independent key bitting” system.
- With the double-bit 6 lever CISA system, up to 244 million key differs are possible.

AVAILABLE MODELS

- With and without latchbolt, with electrically operated latchbolt, with construction key (operating the latchbolt) for installers and construction workers, with service key (controlling 2 throws), with front

locking or three locking points.

- Double dimensional standard to meet any installation requirements.
- Double lock version (Multifunction double-bit/cylinder, double-bit/double-bit): 2 locks, coupled to obtain a single product performing different types of function (version with security lock, version with service lock and version with service lock and opening limiting device).



CHARACTERISTICS

The ‘independent key bitting’ lock system exponentially reduces the possibilities to illegally reproduce the key and interpret the lock internal combination.



INDEPENDENT BITTING KEY

**For top level performances, CISA recommends:
BITTED CYLINDER.**



Recommended accessories for New Cambio Facile and Standardlock double-bit key Systems

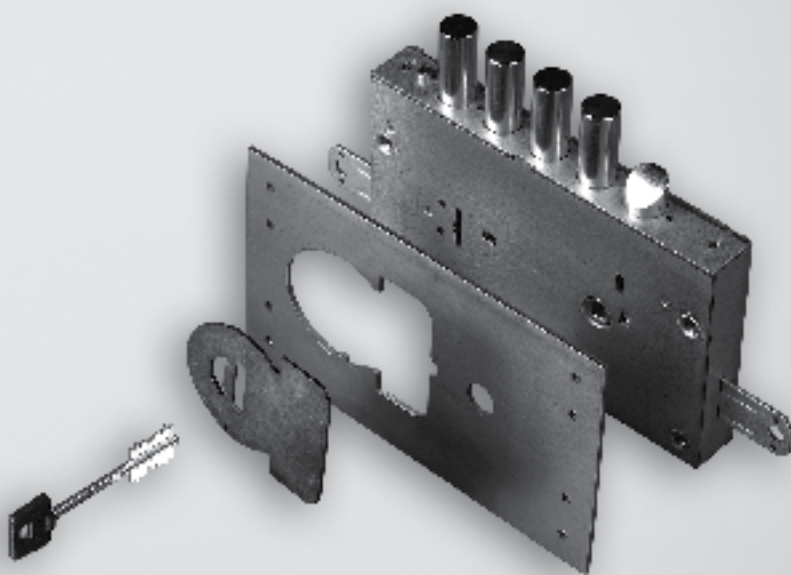
Additional devices to increase the lock security.

BITTED CYLINDER

The bitted cylinder system consists in a special cylinder to be fitted to a double-bit key lock (Standardlock and/or New Cambio Facile) in order to only be able to introduce the key in the lock after rotating the cylinder. The cylinder rotation will cause a gate to lift, allowing the key to be inserted in the lock. The gate makes it impossible to use picklocks in order to decode the lock.

MOUNTING PLATES

They facilitate lock installation on the door and thanks to a manganese insert, protect locks against drilling action. They are installed between the door and lock to protect the whole locking assembly.



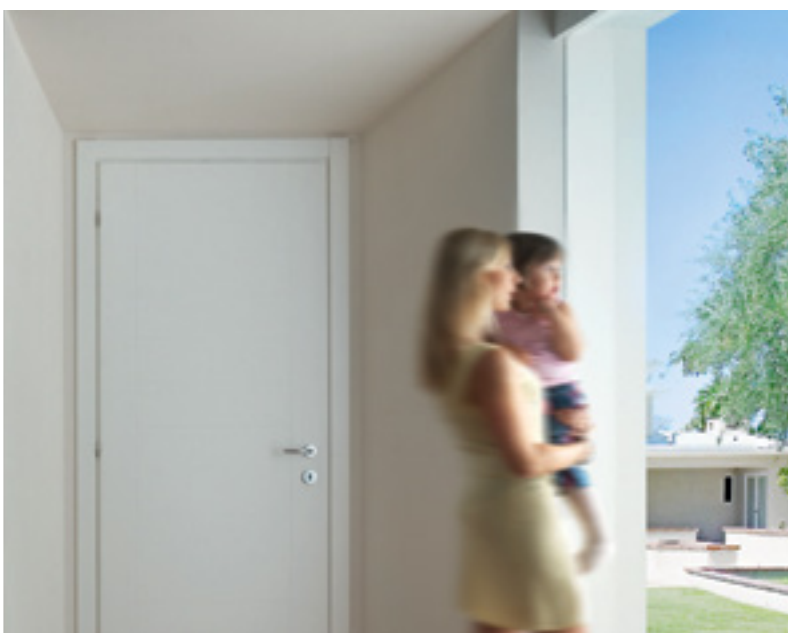


PROTECTIVE ROSES

Protective roses available in different designs and finishes to meet door finish (handle, hinge) matching requirements.



Multifunction System



CERTIFICATES

The double locks for armored doors have been designed and tested to meet the strictest requirements provided for by the European Draft standard UNI EN 12209:03.

OPERATION

- Two locks coupled to obtain a single product performing different functions for enhanced handiness and security: version with security lock, version with service lock and version with service lock and opening limiting device.
- In the double bit New Cambio Facile models, the lock key bitting can be changed at any time. Thanks to the New Cambio Facile Patented System, the keys can be changed easily, without having to disassemble the lock or parts of it, by exclusively using the keys.

With New Cambio Facile, the key can be changed for a virtually limitless number of times.

- The Revolution European profile cylinder models are fitted with a special, effort-reducing gear mechanism which ensures smooth key rotation when operating the lock.

RANGE

- Developed according to 2 dimensional standards to meet any installation requirements.

AVAILABLE MODELS

Version with security function and dependent locks:

- The secondary lock can be operated to lock the main lock when this is in its closed position. In the items with a double bit key main lock (Standard and/or New Cambio Facile), the secondary lock will block the key hole.

Version with security function and independent locks:

- The secondary lock can be operated (to control the latchbolt and secondary deadbolt) even when the main lock is in its open position. The secondary lock will lock the main lock when this is in its closed position.

In the items with a double bit key main lock (Standard and/or New Cambio Facile), the secondary lock will block the key hole.

Version with service lock:

- The secondary lock key will operate the latchbolt and secondary deadbolt.
- The latchbolt can be remotely controlled electrically (electrically operated locks).

Version with service key and opening limiting device:

- The secondary lock key will operate the latchbolt and secondary deadbolt; the opening limiting device is operated by controlling the secondary lock first throw.

Multifunction System

SECURITY

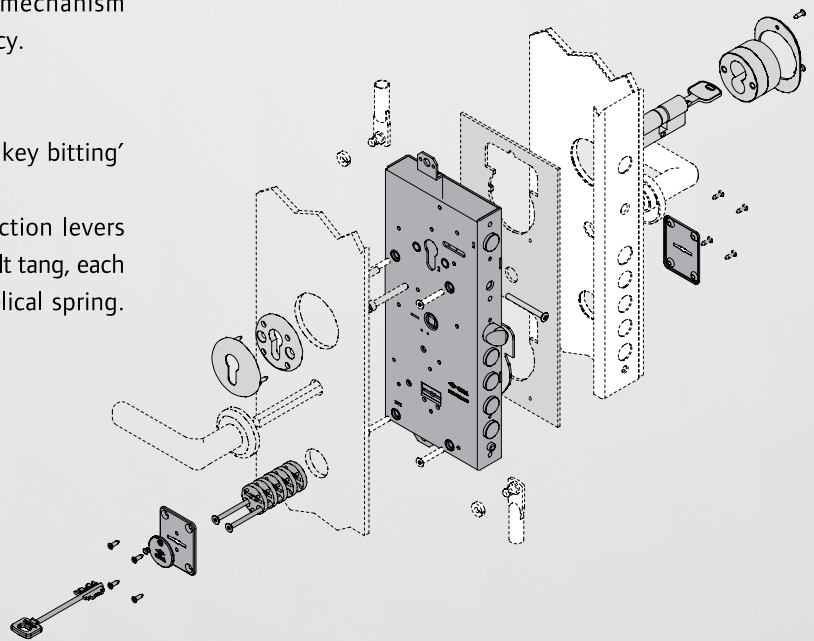
Cylinder version

- In the Revolution models, security is guaranteed by the CISA European profile cylinders, true technological jewels.
- The Revolution system, installed with the CISA cylinders AP3 and/or RS3, and series 06480 and/or 06485 protective roses, meets the top security requirements provided for by the European standards UNI EN 1303 and UNI EN 12209:03.
- Top security is offered by the “security lock” function. The secondary lock will lock the main lock mechanism considerably improving anti-burglary efficiency.

Double bit version

- Security is guaranteed by the ‘independent key bitting’ operation system patented by CISA.
- The double-bit key operates the 6 anti-friction levers arranged in two sets, separated by the deadbolt tang, each lever being activated by an independent helical spring.

- With the Double-bit 6 lever CISA system, up to 244 million different keys can be made.
- Top security is offered by the “security lock” function. In addition to locking the main lock mechanism, the secondary lock will block the double bit key hole considerably improving anti-burglary and anti-picking efficiency.



About Allegion

Allegion (NYSE: ALLE) creates peace of mind by pioneering safety and security. As a \$2 billion provider of security solutions for homes and businesses, Allegion employs more than 7,800 people and sells products in more than 120 countries across the world. Allegion comprises 23 global brands, including strategic brands CISA®, Interflex®, LCN®, Schlage® and Von Duprin®.

For more, visit **allegion.com**

