

Grano Colour



Grano Colour data sheet

About this product

Grano Colour is a cement-based, integrally coloured granolithic product for the surface hardening of freshly placed concrete or screeds.

Applied by dry-shake method, it may be steel floated to a smooth finish or imprinted to obtain tiled or paved effects. For interior or exterior use.

Technical data

Abrasion strength* <math>< 3.2\text{cm}^3/50\text{cm}^2</math> TS:699/DIN:52108 (Method of Böhme)

*Value obtained in laboratory conditions.

Technical services

Weber has a team of experienced advisors available to provide technical support.

Technical helpline : 0860 27 28 29 or visit www.weber-tylon.co.za

Contact the C&I library (www.cnci.org.za) for technical information on cement and concrete.

Use

To provide a very hard-wearing, attractive colouring system for the surface of concrete or screeds.

Suitable surfaces

Freshly placed concrete or screeds. Grano Colour is floated into the surface of the wet screed or concrete.



Good practice

Do not apply :

- if frost is forecast within 4 hours of use
- in temperatures below 5°C or above 30°C
- on elevations in direct sunlight or where the substrate is hot

Work should be completed in a sequence that will enable a wet edge to be maintained across the entire floor and thus prevent dry joints

Cover during hot/dry weather to avoid premature drying

To ensure colour consistency, the required material should be of the same batch number.

Laying a screed

Preparing the substrate

- Dampen the surface of the base concrete.
- Combine 3 volumes of water and 1 volume of hydrochloric acid in a plastic bucket.
- Apply this solution liberally to the base concrete.
- Wire-brush the surface vigorously. Allow to react for a further 15 minutes.
- Flush clean with water and remove all loose material using a hard bristle broom.

Mixing the screed

- Combine 4 volumes of crusher dust or clean river sand with 1 volume of 42.5 cement.
- Add water to obtain a stiff consistency.
- Place the screed to a minimum thickness of 30mm.
- Compact thoroughly and strike level.
- Wood float the surface. Do not add extra water during this process.

Application

The surface must be damp, but not glistening with water.

▲ Apply Grano Colour by dry-shake method at a rate of 5kg/m² directly to the surface of the entire screed.

▲ Leave to soak up the water from the screed.

▲ Wood float the Grano Colour into the surface.

▲ Steel float immediately to obtain a smooth finish.

▲ To obtain a smoother surface, sift Grano Colour through a very fine sieve or stocking to remove all coarse material. Apply this sifted material to the wet surface and steel float.

▲ Leave the completed floor to dry for 24 hours.

Curing

Wet the surface 3 times daily for a minimum of 6 days.

Allow to dry for a minimum of 8 days before sealing.

Sealing

When properly cured and dry, the finished work must be sealed using an appropriate sealer in accordance with its data sheet.

Please contact our Technical helpline on 0860 27 28 29 for information on the range of Weber sealers and sealing methods.

Please note :

If a floor is sealed before it is properly dry, white marks will appear on the surface. This is as a result of the salts migrating to the surface and being trapped under the sealer. This can only be rectified by stripping the sealer and sanding the surface. The floor must then be cleaned and re-sealed.

It is therefore clear that it is better to wait for the floor to dry properly before sealing.

An easy test to determine whether a floor is dry enough to seal :

- Place a piece of dense plastic flat on the floor.
- Leave overnight.
- If any moisture has collected on the bottom of the plastic, the floor should be left to dry for at least 2 days before re-testing.

Features and benefits

- Carefully graded aggregates to produce a fine finish
- Improved abrasive resistance
- Colours concrete or screed to a depth of about 2mm
- No risk of colour being rubbed off or abraded
- Colours are UV stable
- Quality assured raw materials
- Exceptional and consistent quality
- Backed by superior technical support
- Available in a range of colours

Storage and shelf life

When stored, unopened in a dry place at temperatures above 5°C, shelf life is 12 months from date of manufacture.

Specifying

"Apply Weber Grano Colour at a rate of 5kg/m² in accordance with the manufacturer's instructions."

Packaging and coverage

Grano Colour is supplied in 20kg paper bags.

Coverage is approximately 3 to 4m² per bag.

Safety instructions

Contains cement, which is alkaline when wet and can cause skin irritation. Use eye protection and gloves and avoid prolonged skin contact. Avoid inhalation of dust. Wash skin contamination away with warm soapy water. Remove splashes to the eyes by prolonged irrigation and consult a doctor. Do not ingest.

Surface preparation

Remove all bleed water.

Masking

Mask all areas where there is a risk of splashing and staining and where straight edges are required.

Mixing

No mixing required. Dust Grano Colour in dry powder form onto the surface of the concrete or screed before final wood- and steel floating takes place.

See application method.

Applying the slurry coat

- Mix equal volumes of plaster sand and OPC and add Weber Key-it to create a creamy, brushable consistency.
- Apply this slurry to the base concrete using a block-brush or broom.
- The placing of the screed should take place while the slurry coat is wet.

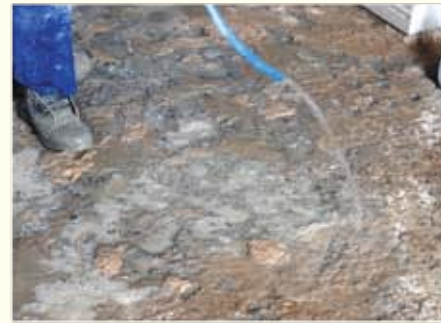
Grano Colour application method



Expansion joints must be cut before application commences



Sweep the floor to remove all dust and debris



Dampen the surface of the base concrete



Combine 3 volumes of water and 1 volume of hydrochloric acid in a plastic bucket and apply this solution liberally to the base concrete



Wire-brush the surface vigorously and then allow the acid solution to react for a further 15 minutes



Flush clean with water and remove all loose material using a hard bristle broom



Underfloor heating should be installed at this point



Combine 4 volumes of crusher dust or clean river sand with 1 volume of 42.5 cement



Mix thoroughly



Add water to obtain a stiff consistency



Note the consistency



Mix equal volumes of plaster sand and OPC. Add Weber Key-it to create a creamy, brushable slurry. Apply to the base concrete using a block-brush



Place the screed to a minimum thickness of 30mm and compact thoroughly. The placing of the screed should take place while the slurry coat is wet



Strike level



Wood float the surface. DO NOT add extra water during this process

photographed with the kind co-operation of Denise Suttie

Grano Colour application method continued



Apply Grano Colour by dry-shake method at a rate of 5kg/m² directly to the surface of the entire screed



Leave to soak up the water from the screed



Wood float the Grano Colour into the surface



Steel float immediately to obtain a smooth finish



To obtain a smoother surface, sift Grano Colour through a very fine sieve or stocking to remove all coarse material and apply to the wet surface



Steel float immediately to a very smooth finish. Leave the completed floor to dry for 24 hours

Curing

Wet the surface 3 times daily for a minimum of 6 days. Allow to dry for a minimum of 8 days before sealing.

Sealing

When properly cured and dry, the finished work must be sealed using an appropriate sealer. See data sheet overleaf.

Grano Colour colour chart



bamboo



brown



charcoal



chocolate



clay



green



grey



pebble



terracotta



white

These colour representations are as accurate as the printing process permits. It is advisable to view an actual product sample before a final choice is made.

Saint-Gobain Construction Products SA (Pty) Ltd
77 Ostend Road, Germiston South, Johannesburg
Tel.: +27 11 345-5300 Fax: +27 11 345-5301
Sales : 0860 27 28 29 or visit www.weber-tylon.co.za



To the best of our knowledge and belief, this information is true and accurate. As the conditions of use and any labour involved are beyond our control, the end-user must satisfy himself by prior testing that the product is suitable for his specific application. Products are sold subject to our Standard Conditions of Sale.



