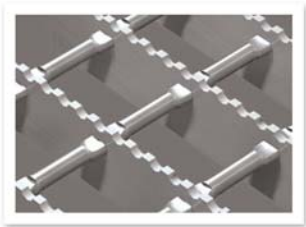


Vitagrid Walkway Grating

Vitagrid open steel rectangular or square pattern flooring is manufactured from mild steel to 350WA material and is constructed by a pressure forged process in which the load bearing and transverse bars are joined under 600 tons of pressure ensuring an immovable intersection.



Standard Range

| Pitch | Bearing Bars | Serrated | Plain | Galv. | Self Colour |
|--------|--------------|----------|-------|-------|-------------|
| VE100 | 25-40 flat | | | | |
| | 3mm / 4,5mm | yes | yes | yes | yes |
| VE40 | 25-40 flat | | | | |
| | 3mm / 4,5mm | yes | yes | yes | yes |
| 50/100 | 25-40 flat | | | | |
| | 3mm / 4,5mm | yes | yes | yes | yes |
| 50/50 | 25-40 flat | | | | |
| | 3mm / 4,5mm | yes | yes | yes | yes |

Our full range of pitches available are 30, 43, 50, 60, 86 and 100 in transverse pitches of 50 and 100mm.

* 20 x 3 available on request.

Bar Arrangements

Many types of Vitagrid have been developed to comply with world-wide application and safety requirements and allow a customer to choose a grating to match loading requirements. In addition, a range of smaller mesh sizes gives the added safety feature of stopping objects from passing between the bars.

Transverse bars are 8mm solid round bars, but others are available.

Vitagrid is available in standard panel form. Normally ex stock in various standard sheets. Tailored fabrication of bespoke orders are manufactured from purpose made panels to reduce costs and wastage.

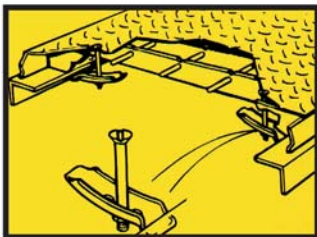
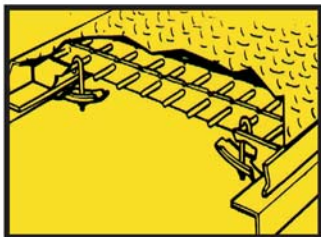
Applications

Vitagrid non-slip serrated grating is suitable for most walkway gantries, platforms etc and has been used in many applications. Serrated grating gives improved performance particularly for the offshore industry and reduces slippage and injuries.

- See Vitagrid Walkway grating load table on page 21.

Vitaplate

Vitaplate is half the weight of equal strength chequer plate. This equates to less tonnage for handling, transportation and erection than with the equivalent chequer plate, producing overall cost and weight savings.



Standard Range

The basic substructure of Vitaplate is Vitagrid open steel grating with load bearing bars at 43mm pitch with 8mm transverse bars pressure forged at 100mm centres and a surface plate of 3mm vastrap pattern chequer plate welded to the substructure. Other Vitagrid configurations are available for different loads.

Vitagrid heavy duty grating

Our range of heavy duty grating combines all the advantages of pressure-forged grating with the extra load carrying capabilities of a heavy duty floor. Vitagrid heavy duty grating is constructed from load-bearing bars in various sizes at 43mm pitch with **8mm round bars pressure forged** to the upper edges of the load-bearing bars using 600 tons of pressure.

Standard Range

| Pitch | Bearing Bars | Serrated | Plain | Galv. | Self Colour |
|-------|--------------|----------|-------|-------|-------------|
| VE100 | 50 - 100 | no | yes | yes | yes |
| VE40 | 6mm thick | | | | |

Vitagrid Extra Heavy Duty Gratings

Vitagrid is available with load bearing bars at 50mm pitch with **10mm round bars securely forged** to the load bearing bars at 100mm pitch using 600 tons of pressure.

Standard Range

| Pitch | Bearing Bars | Serrated | Plain | Galv. | Self Colour |
|--------|------------------------|----------|-------|-------|-------------|
| 50/100 | 110 - 150 8mm thick | no | yes | yes | yes |

Vitagrid Super Heavy Duty Grating

Vitagrid is available with load bearing bars 180mm to 200mm deep and with **12mm round bars securely welded** to the bearer bars. Vitagrid Heavy duty and Super Heavy duty are designed as heavy-duty industrial flooring, ideally suited for use as: Bridge Decking, Trench Covers and all applications where extra heavy loadings need to be sustained.

Standard Range

| Pitch | Bearing Bars | Serrated | Plain | Galv. | Self Colour |
|--------|-------------------------|----------|-------|-------|-------------|
| 50/100 | 180 - 200 12mm thick | no | yes | yes | yes |

Other bar arrangements for heavy duty and extra heavy duty flooring may be available on request, dependent on quantity.

Vitagrid aluminium grating

Vitagrid Aluminium Grating is designed to give the maximum structural performance in corrosive conditions. By virtue of its design, Vitagrid is easily cut to shape from standard sheets if required. Stairtreads, Kick Plates or Toe Plates and Non-slip Nosing are available on request dependent on quantity.

Tailored bespoke or cut to size panels are fabricated to drawings supplied. The standard range of sizes and apertures that are readily available are shown below. Other variations may be manufactured dependent on quantity. Before specifying Kick or Toe Plate sizes please confirm with our offices as to the sizes you require to ensure stock availability to meet your delivery requirements and needs.

Standard Range

| Series | Depths | Banded | Serrated | Plain | Anodised | Pickled |
|--------|--------------------|--------|----------|-------|----------|---------|
| 30/100 | 25/30/40/ 50 in | yes | yes | yes | no | yes |
| VE100 | 4.5mm | yes | yes | yes | no | yes |

Vitagrid aluminium grating is of a pressure locked construction with 8mm dia transverse bars pressure-forged just below the walking surface of the load bearing bars giving a "locked-secure" joint with no dependence on welding except where banding, Kick Plates or Non-slip Nosing are required.

Applications:

- Architectural walkways
- Sunshades
- Window cleaning access
- Roof walkways

Benefits include:

- Max. structural performance
- Lightweight, long lasting and highly visible
- Spark and corrosion resistant

Standard panels are available in a rectangular pattern, with a plain top surface. For maximum slip-resistance, a serrated top surface is also available. Panel sizes available with span shown on first dimension will be 2000mm x 1000mm and 3000mm x 1000mm. Should other standard sizes be required, these can be supplied depending on quantity.

- Please see Aluminium Loading Table on page 23.

Vitagrid stainless steel grating

Vitagrid offers the unique concept of having the same type of flooring throughout your plant or installation. Vitagrid Stainless Steel Grating has pressure-forged 8mm dia nominal transversal bars just below the bearing bar giving a neat and weldless appearance. The advantage of this system is that it avoids weld embrittlement typical in these types of materials which in turn offers a longer product life. Plain or serrated panels can be supplied in standard panels or bespoke to drawing if required.

Other depths and configurations are available on request dependant on quantity required.

Standard Range

| Series | Bearer Bar | Banded | Serrated | Plain | Finish | 3CR12 | 304 | 316 |
|--------|--------------------------------------|--------|----------|-------|--|-------|-----|-----|
| VE100 | 25/30/ 40/50 in 4,5mm thick | yes | yes | yes | p a s s i v a t e d | yes | yes | yes |
| VE40 | | yes | yes | yes | | yes | yes | yes |
| | | | | | | | | |
| 30/50 | | yes | yes | yes | | yes | yes | yes |
| 30/100 | | yes | yes | yes | | yes | yes | yes |

Vitagrid standard panels are available in the following sizes for economical and design purposes, reduce wastage, improve handling, transportation and packing.

First dimensions are the span direction
2000mm x 1000mm, 2400mm x 1200mm and 3000mm x 1000mm



Please see loading table on page 23.

Vitagrid Steel Minimesh

Grating Specification

Bearing Bar: 20 x 1.6mm

Cross Bar: 4 x 4mm Twisted Square Bar

Mesh Size: 12.5 x 50mm & 12.5 x 100mm

| Thickness | B/Bar Depth | Opening | Span | CL | Def. | UDL | Def. |
|-----------|-------------|---------|------|------|------|-------|------|
| 1.6 | 20 | 12.5 | 200 | 2399 | 0.23 | 23998 | 0.29 |
| 1.6 | 20 | 12.5 | 300 | 1600 | 0.52 | 10666 | 0.65 |
| 1.6 | 20 | 12.5 | 400 | 1200 | 0.92 | 6000 | 1.15 |
| 1.6 | 20 | 12.5 | 500 | 960 | 1.44 | 3839 | 1.8 |
| 1.6 | 20 | 12.5 | 700 | 685 | 2.81 | 1959 | 3.52 |
| 1.6 | 20 | 12.5 | 900 | 533 | 4.65 | 1185 | 5.82 |
| 1.6 | 20 | 12.5 | 1000 | 480 | 5.75 | 960 | 7.18 |

Grating Specification

Bearing Bar: 25 x 1.6mm

Cross Bar: 4 x 4mm Twisted Square Bar

Mesh Size: 12.5 x 50mm & 12.5 x 100mm

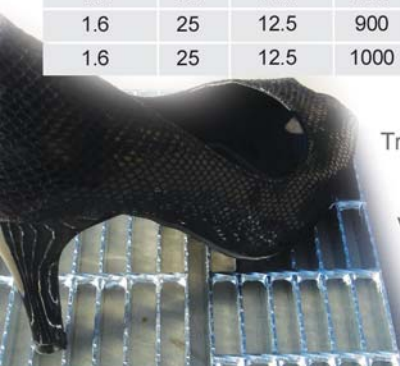
| Thickness | B/Bar Depth | Opening | Span | CL | Def. | UDL | Def. |
|-----------|-------------|---------|------|------|------|-------|------|
| 1.6 | 25 | 12.5 | 200 | 3749 | 0.18 | 37497 | 0.23 |
| 1.6 | 25 | 12.5 | 300 | 2499 | 0.41 | 16665 | 0.52 |
| 1.6 | 25 | 12.5 | 400 | 1875 | 0.74 | 9374 | 0.92 |
| 1.6 | 25 | 12.5 | 500 | 1500 | 1.15 | 6000 | 1.44 |
| 1.6 | 25 | 12.5 | 700 | 1072 | 2.25 | 3061 | 2.82 |
| 1.6 | 25 | 12.5 | 900 | 833 | 3.72 | 1852 | 4.65 |
| 1.6 | 25 | 12.5 | 1000 | 749 | 4.59 | 1500 | 5.75 |

Applications:

Trenches, pedestrian walkways,
safe access for the disabled.

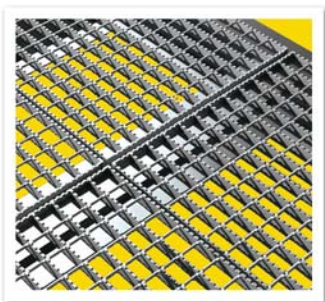
Sufficient light penetration for
vegetation growth underneath.

Finishes: Galvanised,
coated or plain.



Standard Modular Grating Panels

Our Standard Products division is dedicated to supplying you with a range of our products “off the shelf”. Stockline is a service created to guarantee stocks of our most popular products on a daily basis. If you wish to fabricate your own products, then this division is ideal for you.



Most popular modular panel sizes (span shown as first dimension):

- Mild steel self colour or galvanised
2m x 1m / 6m x 900mm / 3m x 1m / 2400mm x 1200mm
- Stainless steel 3CR12 / 304 or 316
2m x 1m / 3m x 1m
- Aluminium
2m x 1m / 3m x 1m

Our most popular load bar sizes are:

- | | |
|----------|------------|
| - 25 x 3 | - 25 x 4.5 |
| - 30 x 3 | - 30 x 4.5 |
| - 40 x 3 | - 40 x 4.5 |

In both VE40 and VE100 pitch but if any of the above is not what you are looking for, we can manufacture to suit your specifications.

Benefits include:

- Reduced delivery time (usually 3/4 days)*
- Flexibility on projects
- Easy to order
- Saving you time and money

* Dependant on stock availability