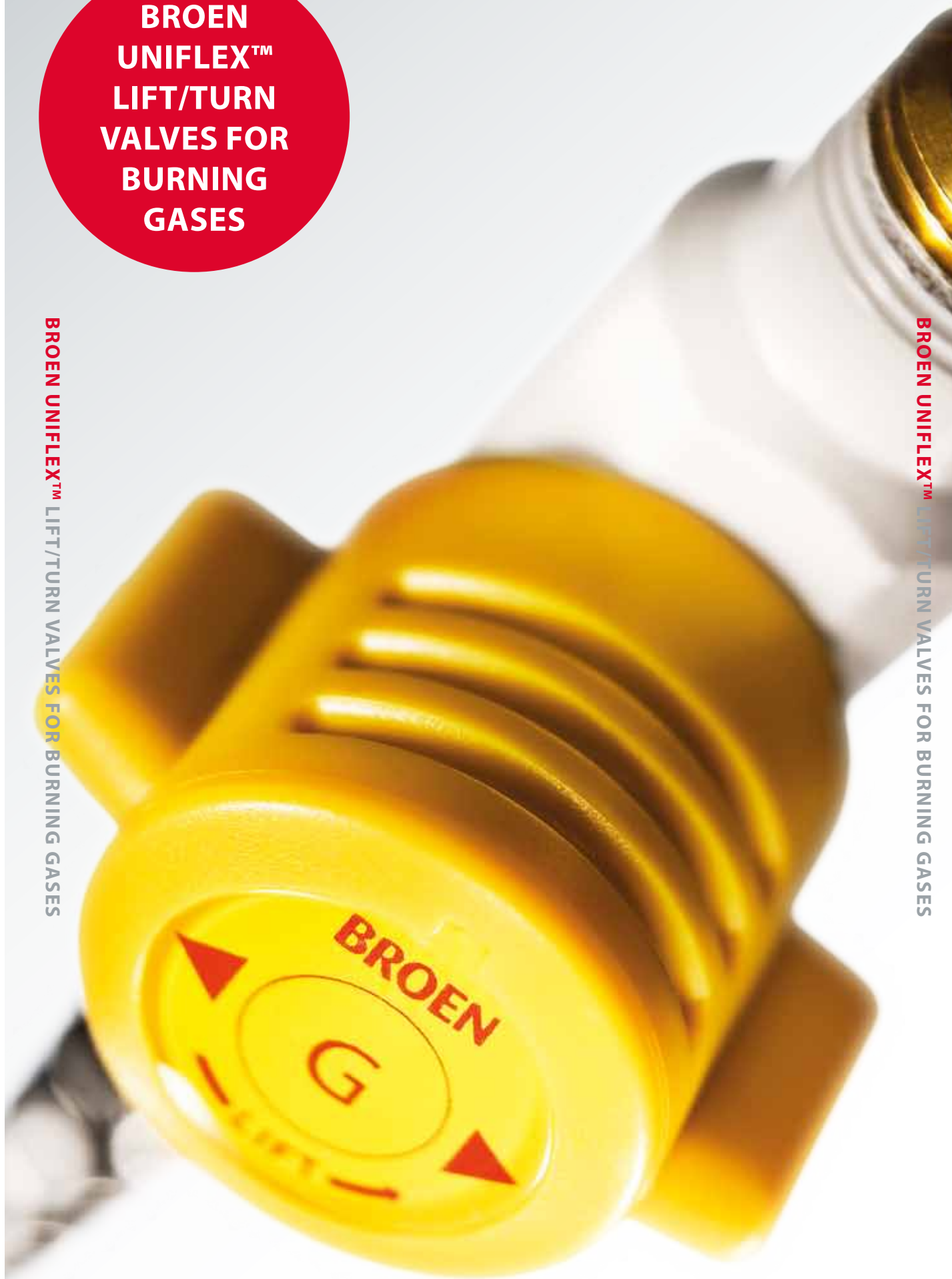


**BROEN
UNIFLEX™
LIFT/TURN
VALVES FOR
BURNING
GASES**

BROEN UNIFLEX™ LIFT/TURN VALVES FOR BURNING GASES

BROEN UNIFLEX™ LIFT/TURN VALVES FOR BURNING GASES



BROEN

INTELLIGENT FLOW SOLUTIONS

BROEN UNIFLEX™

Lift/Turn Valves for Burning Gases

No. 2520.317.1010-14

Burning gas "lift & turn"

Bench mounted

"Lift/turn" gas fitting.

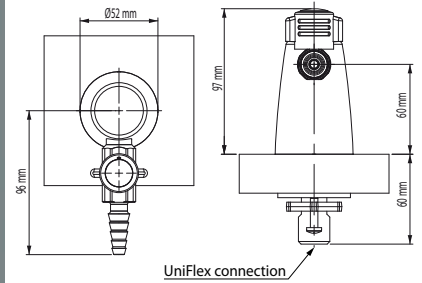
Alternative media identifications:

LPG: 2520.317.1012-14

AIR: 2520.317.1038-14

VAC: 2520.317.1041-14

Weight: Approx. 0.7 kg



No. 2520.319.1010-14

Burning gas "lift & turn"

Bench mounted

Two-way "lift/turn" gas fitting 180°.

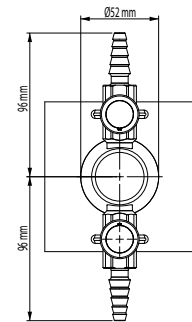
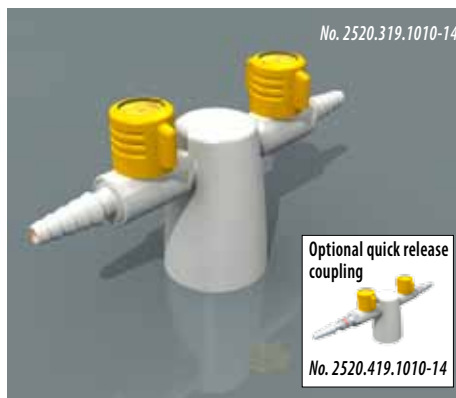
Alternative media identifications:

LPG: 2520.319.1012-14

AIR: 2520.319.1038-14

VAC: 2520.319.1041-14

Weight: Approx. 0.8 kg



No. 2520.318.1010-14

Burning gas "lift & turn"

Bench mounted

Two-way "lift/turn" gas fitting 90°.

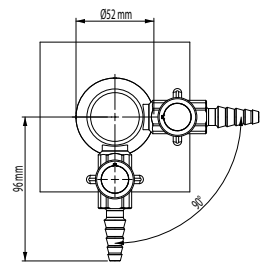
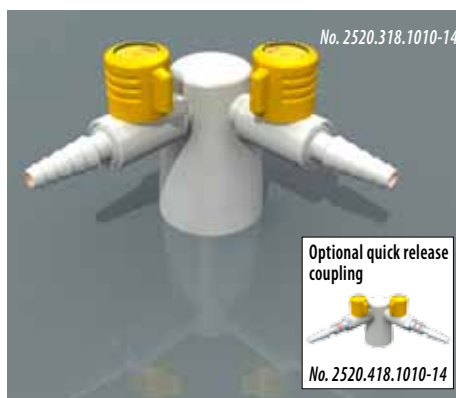
Alternative media identifications:

LPG: 2520.318.1012-14

AIR: 2520.318.1038-14

VAC: 2520.318.1041-14

Weight: Approx. 0.8 kg



No. 2520.320.1010-14

Burning gas "lift & turn"

Bench mounted

Four-way "lift/turn" gas fitting.

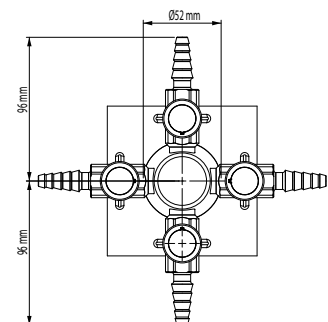
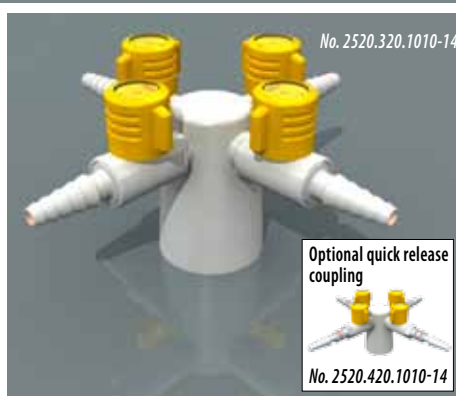
Alternative media identifications:

LPG: 2520.320.1012-14

AIR: 2520.320.1038-14

VAC: 2520.320.1041-14

Weight: Approx. 1.1 kg



BROEN UNIFLEX™

Lift/Turn Valves for Burning Gases

No. 2520.397.1010

Burning gas "lift & turn"

Wall/suspended mounted

"Lift/turn" gas valve.

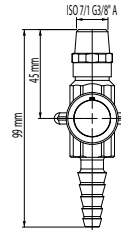
Alternative media identifications:

LPG: 2520.397.1012

AIR: 2520.397.1038

VAC: 2520.397.1041

Weight: Approx. 0.1 kg



No. 2520.722.1010-14

Burning gas "lift & turn"

Wall/suspended mounted

"Lift/turn" gas fitting.

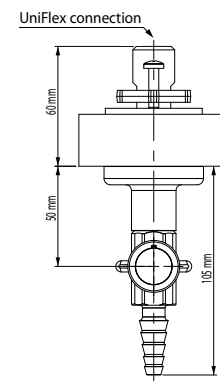
Alternative media identifications:

LPG: 2520.722.1012-14

AIR: 2520.722.1038-14

VAC: 2520.722.1041-14

Weight: Approx. 0.7 kg



No. 2520.116.1010-14

Burning gas "lift & turn"

Wall/suspended mounted

Two-way "lift/turn" gas fitting 90°.

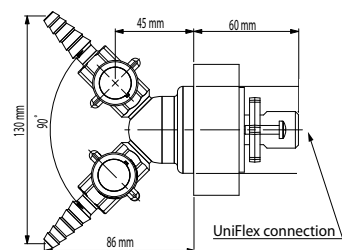
Alternative media identifications:

LPG: 2520.116.1012-14

AIR: 2520.116.1038-14

VAC: 2520.116.1041-14

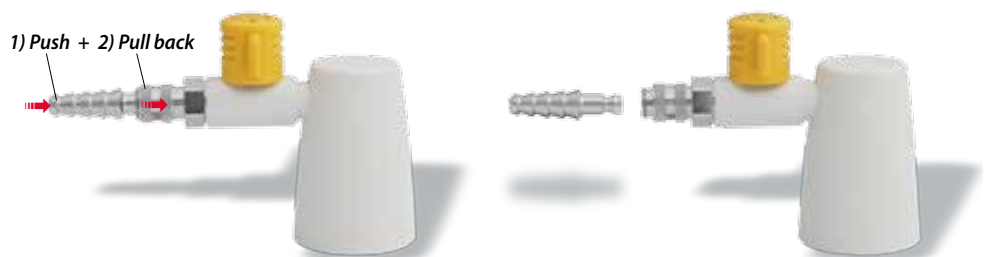
Weight: Approx. 1.2 kg



QUICK RELEASE COUPLING WITH "DOUBLE LOCK" SAFETY FEATURE

In order to release the nozzle with "double safety" feature you have to both push the nozzle 1) while simultaneously pulling back the sleeve 2).

When the nozzle is removed the valve is closed regardless of handle position.



BROEN UNIFLEX™

Options

BROEN UNIFLEX INTERNATIONAL APPROVAL

BROEN UniFlex flexible connection for hoses and Cu-pipes has been approved by leading gas institutes in UK, Germany and Denmark. More approvals are pending.

By using BROEN UniFlex flexible connection you will have an international 3rd party certification.



CONNECTION

Standard BROEN UniFlex - Flexible connection for hoses and Cu-pipes

92C0034 Nitrile o-ring for burning gas

NPSM / NPT 1/2"

UniFlex connection

Hoses (for full specifications contact BROEN)

93G XXXXXXXX

93M XXXXXXXX

UniFlex connection parts for pipes

Support bush

- recommended for soft & medium hard copper

3/8"	ø8mm	ø10x0.8mm	ø10x1mm	ø12mm	ø15mm
152.1139	044.093.008	044.093.010	044.093.110	044.093.012	044.093.015

Optional connection

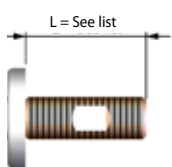


UniFlex connections



Connection for 3/8" pipe	Connection for ø8mm pipe	Connection for ø10mm pipe	Connection for ø12mm pipe	Connection for ø15mm pipe
order number: 152.15.120	order number: 152.15.170	order number: 152.15.220	order number: 152.15.300	order number: 152.12.350

BROEN FIS (flexible inlet systems)



Lenght / L	Standard lenght						
	L = 30mm	L = 45mm	L = 60mm	L = 80mm	L = 90mm	L = 120mm	L = 150mm
1) UniFlex connection (External NPT1/2" internal UniFlex)	Code 0	Code 32	Code 14	Code 33	Code 18	Code 34	Code 35
2) Optional connection (External G1/2" internal ø15mm)	Code 02	Code 06	Code 08	Code 15	Code 17	Code 19	Code 20

BROEN UNIFLEX™

Lift/Turn Valves for Burning Gases

GENERAL INFORMATION

Materials

Laboratory fittings from BROEN are manufactured of the highest quality materials, primarily brass. Stainless steel is also used where required. The surfaces of all fittings are finished in the chemically resistant BROEN POLYCOAT.

Installation and technical tables

Special requirements of your local Water and Gas board should be checked before commencing installation. All pipe work should be purged to ensure cleanliness before fitting.

Special advantages

The laboratory fittings from BROEN are designed and manufactured with the requirements of a modern laboratory in mind. The hallmarks of these fittings are good performance, durability, easy operation, flexibility and streamlined design, along with an easy-to-clean and attractive appearance.

Pressure conversion			
	bar	Pa	psi
1 bar =	1	1x10 ⁵	14.5
1 Pa =	1x10 ⁻⁵	1	1.45x10 ⁻⁴
1 psi =	6.9x10 ⁻²	6.9x10 ³	1

Example: 67 psi = 67x(6.9x10⁻²) = 4.6 bar

Fittings from BROEN are ideal for all types of laboratories, and are delivered with easy-to-mount fixing items/mounting kit, that will keep the fitting fully locked in its position when installed. Consequently, the fitting will not turn unintentionally, which would result in leaks.

All fittings are delivered with standard BSP threads.

HEADWORK

Valves for burning gases with "lift/turn" safety handles.

The valves are based on a BALLOFIX® ball valve.

Opening/closing function 90° lift/turn.

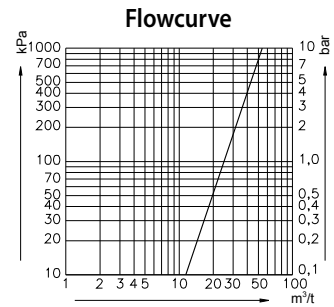


Maximum working pressures:		
kPa	bar	psi
700	7	100

Pressure in relation to atmospheric pressure.

The valves for burning gases can be used for natural, town and low pressure bottle gases as well as vacuum and compressed air.

Allowable pressure test after installation: 1.5 x max. working pressure without function of the valve.



HANDLE COLOUR CODING

Burning gas "lift/turn" fittings



Burning gas



Liquefied petrol gases

TECHNICAL INFORMATION

Specification

Outlet Connections: Fixed serrated nozzles suitable for 8 mm to 13 mm ID rubber tubing.

Inlet Connection: 1/2" BSP shank by 60 mm.

Construction: Brass body.

Seals: Nitrile.

Testing

All fittings are tested and inspected before dispatch.

Maximum design Test Pressure: 1000 kPa (10 bar).

Maximum design Working Pressure: 700 kPa (7 bar).

BROEN LAB develops, manufactures and delivers complete fittings for professional laboratories. Our know-how and our quality products ensure the precise flow of water, gases and air, from source to user.

BROEN LAB solutions are used by professional users in many kinds of laboratories, from the education and health sectors to industry in general. Our products are already an integrated part of many workplaces. From fittings for purified water, nitrogen, vacuum and compressed air, to the control and regulation of pure gases in critical applications such as a gas chromatography and spectrometry.

Our extensive knowledge allows us to continually develop and optimize our products so that they meet customer needs and specifications. Safety, functionality and quality are an integral part of product design and flexibility. Our insight and understanding of working environments and safety in laboratories allow us to develop custom solutions for projects around the world. Use us to plan your project so we can advise you on laboratory layout and design.

Head Office: BROEN LAB GROUP

Skovvej 30 • DK-5610 Assens
Tel. +45 6471 2095 • Fax +45 6471 2476
E-mail: lab@broen.com

BROEN Armaturen GmbH
Industriestrasse 8 • D - 64579 Gernsheim
Germany
Tel. +49 62 58 93 190
E-mail: info@broen.de

BROEN VALVES Ltd.
7, Cleton Street Business Park, Cleton Street
Tipton • West Midlands DY4 7TR • U.K.
Tel. +44 121 522 4515 • Fax +44 121 522 4535
E-mail: broenvalves@broen.com

BROEN Singapore Pte.Ltd.
10 Bukit Batok Crescent #10-02
The Spire S(658079) • Singapore
Tel. +65 6298 0662 • Fax +65 6298 0468
E-mail: sales@broen.com.sg

www.broen.com

02201 LUK BROEN UNIFLEX™ LIFT/TURN VALVES FOR BURNING GASES www.ke.se.art.dk

